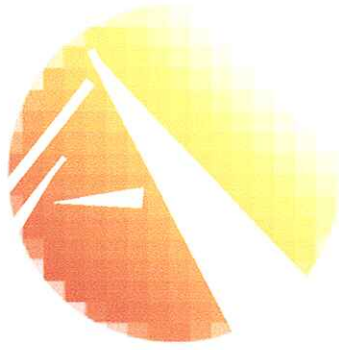


Exhibit Z

Bridgeview Park Site Phase II Environmental Site Assessment



**Bridgeview Park Site Phase II
Environmental Site Assessment**

Aurora

Environmental Consultants L.L.C.

**Phase II
Limited Subsurface Investigation**

Project Site Location:

**536 Bridge City Avenue
Westwego, Louisiana**

Performed For:

**Mr. Jack Stumpf
and
Jack Stumpf & Associates**

Performed By:

Aurora Environmental Consultants L.L.C.

AEC # 1429

September 25, 2008

1.0 EXECUTIVE SUMMARY

2.0 INTRODUCTION

- 2.1 Purpose
- 2.2 Scope of Services
- 2.3 Special Terms and Conditions
- 2.4 Limiting Conditions

3.0 BACKGROUND

- 3.1 Site Description
- 3.2 Physical Setting
- 3.3 Site History and Land Use
- 3.4 Adjacent Property Land Use
- 3.5 Summary of Previous Assessments
- 3.6 Supplemental Records Review

4.0 PHASE II ACTIVITIES

- 4.1 Soil Sampling Scheme and Rational
- 4.2 Field Exploration and Sampling Methods
- 4.3 Subsurface Conditions/Soil Morphology
- 4.4 Chemical Analyses and Methods

5.0 EVALUATION AND PRESENTATION OF RESULTS

6.0 DISCUSSION OF FINDINGS AND CONCLUSIONS

7.0 OPINIONS

8.0 REFERENCES AND SOURCES OF INFORMATION

9.0 LIST OF APPENDIXES

- Appendix A Site Boring Location Map
 - Vicinity Map
 - Street Map
 - Topographic Map
- Appendix B Laboratory Report With Quality Control Information

10.0 SIGNATURES OF ENVIRONMENTAL PROFESSIONALS

1.0 EXECUTIVE SUMMARY

Aurora Environmental Consultants, LLC (AEC) has completed a Phase II Environmental Site Assessment (ESA) for Mr. Jack Stumpf with Jack Stumpf & Associates for the property addressed as 536 Bridge City Avenue in Westwego, Louisiana. This assessment was conducted in order to determine if two adjoining properties, a rail road track to the west and a bulk oil storage facility to the east, have adversely impacted the subsurface groundwater on site. The following describes the work and findings that were revealed during this Phase II ESA:

- 1) The project site is currently open pasture. Cattle and horses were observed on the property. A farm house, barn and several storage sheds are located near the southwest corner of the property.
- 2) Ten soil borings (B-1 thru B-10) were completed to a maximum of twelve feet below the ground surface (BGS). Only water samples were extracted through temporary groundwater monitoring wells from each boring and labeled W-1 thru W-10.
- 3) All samples were analyzed for Benzene, Toluene, Ethylbenzene, and Xylene (BTEX), Total Petroleum Hydrocarbons quantified as Gasoline (TPH-GRO), Total Petroleum Hydrocarbons quantified as Diesel (TPH-DRO), Total Petroleum Hydrocarbons quantified as Oil (TPH-ORO) and the eight RCRA Metals.
- 4) Analytical results indicated that in the water sample from boring B-5 the concentrations of TPH-DRO was above the Louisiana Department of Environmental Quality's (LDEQ) Risk Evaluation/Corrective Action Program (RECAP) Screening Standard.
- 5) Analytical results indicated that in the water sample from boring B-6 the concentrations of TPH-DRO and TPH-ORO was <0.184 mg/L. The screening standard for these compounds is 0.150 mg/L. This low of a detection limit was not able to be set due to the fact that large amounts of sediment were suspended in the water sample not allowing for a true liter of sample to be analyzed creating an increased detection limit.
- 6) Analytical results indicated that in the water sample from boring B-10 the concentrations of TPH-DRO and TPH-ORO was above the Louisiana Department of Environmental Quality's (LDEQ) Risk Evaluation/Corrective Action Program (RECAP) Screening Standard. This boring was located near an above ground storage tank containing diesel that has been used for farm equipment utilized on the property.
- 7) Analytical results indicated that in several water samples taken, numerous RCRA metals were above the Louisiana Department of Environmental Quality's (LDEQ) Risk Evaluation/Corrective Action Program (RECAP) Screening Standard. These samples proved to contain a large amount of sediment. In some occasions the acid preservative utilized for metals analysis can extract metals content from sediment in the sample and suspend it in the water creating a false positive result. It is AEC opinion that a filtered sample from this location would prove to be under the Louisiana Department of Environmental Quality's (LDEQ) Risk Evaluation/Corrective Action Program (RECAP) Screening Standard.

2.0 INTRODUCTION

2.1 Purpose

The purpose of this Phase II ESA was to collect water samples from the project site to determine if the subsurface integrity has been adversely impacted by the adjoining properties. A rail road track is located to the west and a bulk oil storage facility is located to the east of the project site.

2.2 Scope of Services

The scope of work for this assessment included 10 subsurface soil borings for the placement of 10 temporary groundwater monitoring wells. Groundwater samples were extracted from each well for analysis. All borings were completed near the western and eastern property line. All samples collected from the ten monitoring wells were analyzed for Benzene, Toluene, Ethylbenzene, and Xylene (BTEX), Total Petroleum Hydrocarbons quantified as Gasoline (TPH-GRO), Total Petroleum Hydrocarbons quantified as Diesel (TPH-DRO), Total Petroleum Hydrocarbons quantified as Oil (TPH-ORO) and the eight RCRA metals.

2.3 Special Terms and Conditions

This Phase II ESA was prepared under the direction and control of our client Mr. Jack Stumpf. There were no other special terms or conditions associated with this Phase II ESA.

2.4 Limiting Conditions

No limiting conditions occurred at the project site on the day of the site inspection.

3.0 BACKGROUND

3.1 Site Description

The project site is the location of a 125+/- acre cattle and horse farm. The property consists of large open pastures separated by narrow wood lines. A large pond is centrally located on the property. A farm house, barn and several storage sheds are located near the southwest corner of the property. An above ground diesel storage tank is located near the barn on site.

3.2 Physical Setting

The project site is located at 536 Bridge City Avenue in Westwego, Louisiana. The subject property is located on the north side of Bridge City Avenue. According to the Topographic Map the general area of the site is nearly level, with slopes less than 1%.

3.3 Site History and Land Use

The project site has never been developed. The property has been used for cattle and horses for over 100 years according to Mr. Frank Matrana, the current resident and farmer.

3.4 Adjacent Property Land Use

To the west of the project site is a rail road track.

South of the project site is Bridge City Avenue followed by wooded land.

Continental Grain Elevator adjoins the project site to the north.

Wooded land owned by PakTank, a bulk storage facility, adjoins the east side of the project site.

3.5 Summary of Previous Assessments

Two previous Phase I reports have been conducted for a large section of land of which the project site is a small portion of in 1999. In both Phase I reports reviewed the project site was used for agricultural purposes as it is today.

3.6 Supplemental Records Review

No supplemental records were reviewed during this Phase II ESA.

4.0 PHASE II ACTIVITIES

4.1 Sampling Scheme and Rational

Due to the size of the project site, approximately 125 acres, only water samples were completed in the areas most likely to be impacted by adjoining property discharges. These areas included the western and eastern property lines.

4.2 Field Explorations and Sampling Methods

Ten soil borings (B-1 through B-10) were completed on August 22, 2008, to assess subsurface conditions at the site. The boring locations are shown on the Boring Location Map (Appendix A). Prior to installation of the borings, Louisiana One Call was contacted to identify the location of any underground utilities. AEC subcontracted Great Lakes Geotechnical Services, Inc., a Louisiana Department of Transportation and Development (DOTD) licensed driller, to install the geoprobe soil borings. All borings were initiated by Great Lakes Geotechnical Services. The borings were advanced using a tractor mounted hydraulic sampling geoprobe.

The soil borings were drilled to a maximum of twelve feet Below the Ground Surface (BGS). The borings were extracted continuously utilizing three foot plastic geoprobe tubes. Between each boring location, the geoprobe drilling equipment was decontaminated utilizing Alconox soap and rinsed with deionized water.

Upon collection, soil samples were visually and manually inspected. Using new latex gloves, AEC personnel examined the samples for soil characteristics. No odor or visible evidence of phase separated hydrocarbons were observed during the installation and sampling of the borings.

Immediately upon collection, a portion of each water sample was placed in laboratory supplied containers and preserved on ice for analytical testing. The samples were labeled with the date, sample identification number, time of extraction and type of analysis requested. The initial soil/groundwater interface was encountered at approximately 9.0 feet BGS in all the borings.

In all borings a groundwater sample was collected from a temporary groundwater well. The well was completed with #10 slotted PVC screen. The well was purged dry and allowed to recharge prior to

sample collection. The sample portion analyzed for volatile compounds (BTEX and TPH-GRO) were collected with new disposable bailers. The remainder of the groundwater sample was collected utilizing a peristaltic pump and new polyethylene tubing. The groundwater samples are listed as W-1 thru W-10

The bore holes were filled with a cement and bentonite mixture to the ground surface and hydrated following completion of the soil sampling activities.

4.3 Subsurface Conditions/Soil Morphology

According to the Jefferson Parish Soil Survey the soil type at this location was listed as a Sharkey-Commerce, a level poorly drained and somewhat poorly drained soils that have a clayey or loamy surface layer and clayey subsoil or that is loamy throughout.

The soil lithology located at this location was similar for all ten borings. A gray moist silty clay was encountered throughout the entire depth of the boring.

4.4 Chemical Analyses and Methods

The samples were delivered under chain of custody to Acculab, Inc. The samples were analyzed for Benzene, Toluene, Ethylbenzene, and Xylene (BTEX), Total Petroleum Hydrocarbons quantified as Gasoline (TPH-GRO), Total Petroleum Hydrocarbons quantified as Diesel (TPH-DRO), Total Petroleum Hydrocarbons quantified as Oil (TPH-ORO) and the eight RCRA metals.

TPH-GRO analysis was performed utilizing the United States Environmental Protection Agency's (USEPA) *SW-846 Test Methods for Evaluating Solid Wastes, Physical/Chemical Methods* Method Number 5035/8015B. The TPH-DRO and TPH-ORO utilized method number 8015B. BTEX analyses utilized USEPA *SW-846 Test Methods for Evaluating Solid Wastes, Physical/Chemical Methods* Method Number 5035/8021B. With the exception of Mercury the 8 RCRA metals were analyzed using USEPA Method Number 200.7. Mercury was analyzed using USEPA Method Number 245.1

5.0 EVALUATION AND PRESENTATION OF RESULTS

5.1 Water Analytical Results

The following table depicts the groundwater analytical results provided by Acculab Inc. All samples with shading and bold font are over RECAP Screening Standards.

Groundwater Analytical Results

Sample ID	mg/L						
	TPH-GRO	TPH-DRO	TPH-ORO	Benzene	Toluene	Ethylbenzene	Xylene
W-1	<0.100	0.0993	<0.09	<0.001	<0.005	<0.001	<0.002
W-2	<0.100	<0.0938	<0.0938	<0.001	<0.005	<0.001	<0.002
W-3	<0.100	0.0948	<0.09	<0.001	<0.005	<0.001	<0.002
W-4	<0.100	<0.105	<0.105	<0.001	<0.005	<0.001	<0.002
W-5	0.108	0.262	<0.108	<0.001	0.00537	<0.001	<0.002
W-6	<0.100	<0.184	<0.184	<0.001	<0.005	<0.001	<0.002
W-7	<0.100	<0.0957	<0.0957	<0.001	<0.005	<0.001	<0.002

W-8	<0.100	<0.0918	<0.0918	<0.001	<0.005	<0.001	0.00205
W-9	<0.100	<0.106	<0.106	<0.001	<0.005	<0.001	<0.002
W-10	<0.100	0.231	0.265	<0.001	<0.005	<0.001	<0.002

	mg/L						
	TPH-GRO	TPH-DRO	TPH-ORO	Benzene	Toluene	Ethylbenzene	Xylene
RECAP Screening Standard	0.150	0.150	0.150	0.005	1.00	0.70	10.0

BQL = Below Quantitation Limits of detection

mg/L = milligrams per liter

TPH-GRO = Total Petroleum Hydrocarbon Quantified as Gasoline

TPH-DRO = Total Petroleum Hydrocarbon Quantified as Diesel

TPH-ORO = Total Petroleum Hydrocarbons Quantified as Oil

RECAP = Risk Evaluation/Corrective Action Program (Louisiana Department of Environmental Quality)

*Note: Bold font with shading indicates concentration above RECAP Screening Standard.

Groundwater Analytical Results

Sample ID	Chromium	Arsenic	Silver	Cadmium	Barium	Mercury	Selenium	Lead
W-1	0.413	0.188	<0.01	0.013	6.30	0.0004	<0.02	0.413
W-2	0.312	0.156	<0.01	0.054	4.90	<0.0002	0.041	0.436
W-3	0.162	0.144	<0.01	0.024	5.70	<0.0002	0.025	0.197
W-4	0.420	0.102	<0.01	0.074	6.40	0.0003	0.073	0.482
W-5	0.329	0.153	<0.01	0.035	5.32	0.0014	<0.02	0.471
W-6	0.250	0.138	<0.01	0.008	5.98	<0.0002	<0.02	0.321
W-7	0.446	0.139	<0.01	0.013	6.14	0.0006	<0.02	0.381
W-8	0.492	0.252	<0.01	0.017	8.93	0.0005	<0.02	0.511
W-9	0.471	0.265	<0.01	0.023	12.0	0.0014	<0.02	0.754
W-10	0.277	0.104	<0.01	0.022	4.43	0.0003	<0.02	0.517
RECAP Screening Standards	0.10	0.01	0.018	0.005	2.0	0.002	0.05	0.015

*All results are reported in milligrams per Liter

*Note: Bold font with shading indicates concentration above RECAP Screening Standard.

6.0 DISCUSSION OF FINDINGS AND CONCLUSIONS

Analytical results indicated that in the water sample from boring B-5 the concentrations of TPH-DRO was above the Louisiana Department of Environmental Quality's (LDEQ) Risk Evaluation/Corrective Action Program (RECAP) Screening Standard.

Analytical results indicated that in the water sample from boring B-6 the concentrations of TPH-DRO and TPH-ORO was <0.184 mg/L. The screening standard for these compounds is 0.150 mg/L. This low of a detection limit was not able to be set due to the fact that large amounts of sediment were suspended in the

water sample not allowing for a true liter of water to be analyzed creating an increased detection limit. A full liter of this sample would most likely fall under the screening standard of 0.150 mg/L.

Analytical results indicated that in the water sample from boring B-10 the concentrations of TPH-DRO and TPH-ORO was above the Louisiana Department of Environmental Quality's (LDEQ) Risk Evaluation/Corrective Action Program (RECAP) Screening Standard. This boring was located near an above ground storage tank containing diesel that has been used for farm equipment utilized on the property over the past several years.

Analytical results indicated that in several water samples taken, numerous RCRA metals were above the Louisiana Department of Environmental Quality's (LDEQ) Risk Evaluation/Corrective Action Program (RECAP) Screening Standard. These samples proved to contain a large amount of sediment. In some instances the acid preservative utilized for metals analysis can extract metals content from sediment in the sample and suspend it in the water creating a false positive result.

7.0 OPINION

Based on the analytical data and the findings revealed during this Phase II ESA, it was revealed that the groundwater in the area of the above ground diesel tank and the most northern portion of property near the rail road track have been negatively impacted.

It is AEC's opinion that a filtered water sample from this location would prove to be under the Louisiana Department of Environmental Quality's (LDEQ) Risk Evaluation/Corrective Action Program (RECAP) Screening Standard for the eight RCRA.

It is also AEC's opinion that the minimal amount of contamination that exists on the project site would fall under limits set by a RECAP evaluation for a Management Option 1, Groundwater 3 Non Drinking Water and are "*De Minimis*" to the value of the project site. However, the confirmation and knowledge of these results should be reported to the Louisiana Department of Environmental Quality's "*Single Point of Contact*" (SPOC). Also, these analytical results as well as a copy of this report should be forwarded to the LDEQ for further review.

8.0 REFERENCES AND SOURCES OF INFORMATION

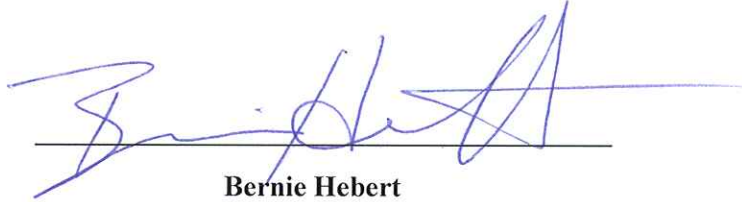
- USDA NRCS Soil Survey
- Microsoft Streets & Trips
- DeLorme 3-D Topo Quads

9.0 LIST OF APPENDIXES

Appendix A	Boring Location & Site Map Vicinity Map Street Map Topographic Map
Appendix B	Laboratory Report With Quality Control Information

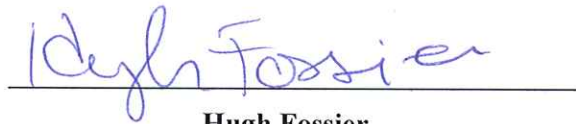
10.0 SIGNATURES OF ENVIRONMENTAL PROFESSIONALS

The following environmental professionals were involved in the completion of this Phase II ESA.



Bernie Hebert

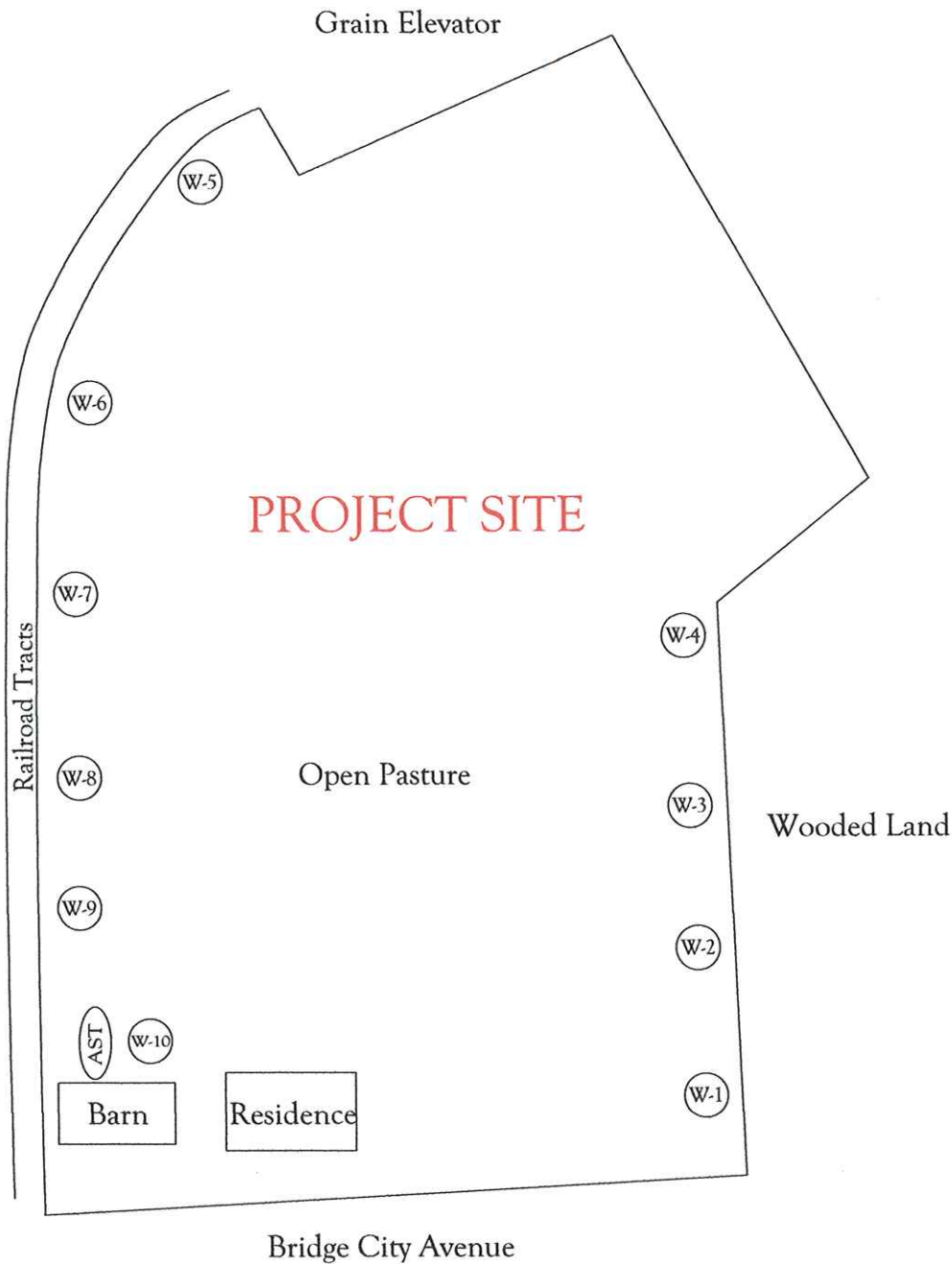
**Environmental Consultant
Field Inspector/Report Generator**




Hugh Fossier

**Environmental Consultant
Report Reviewer**

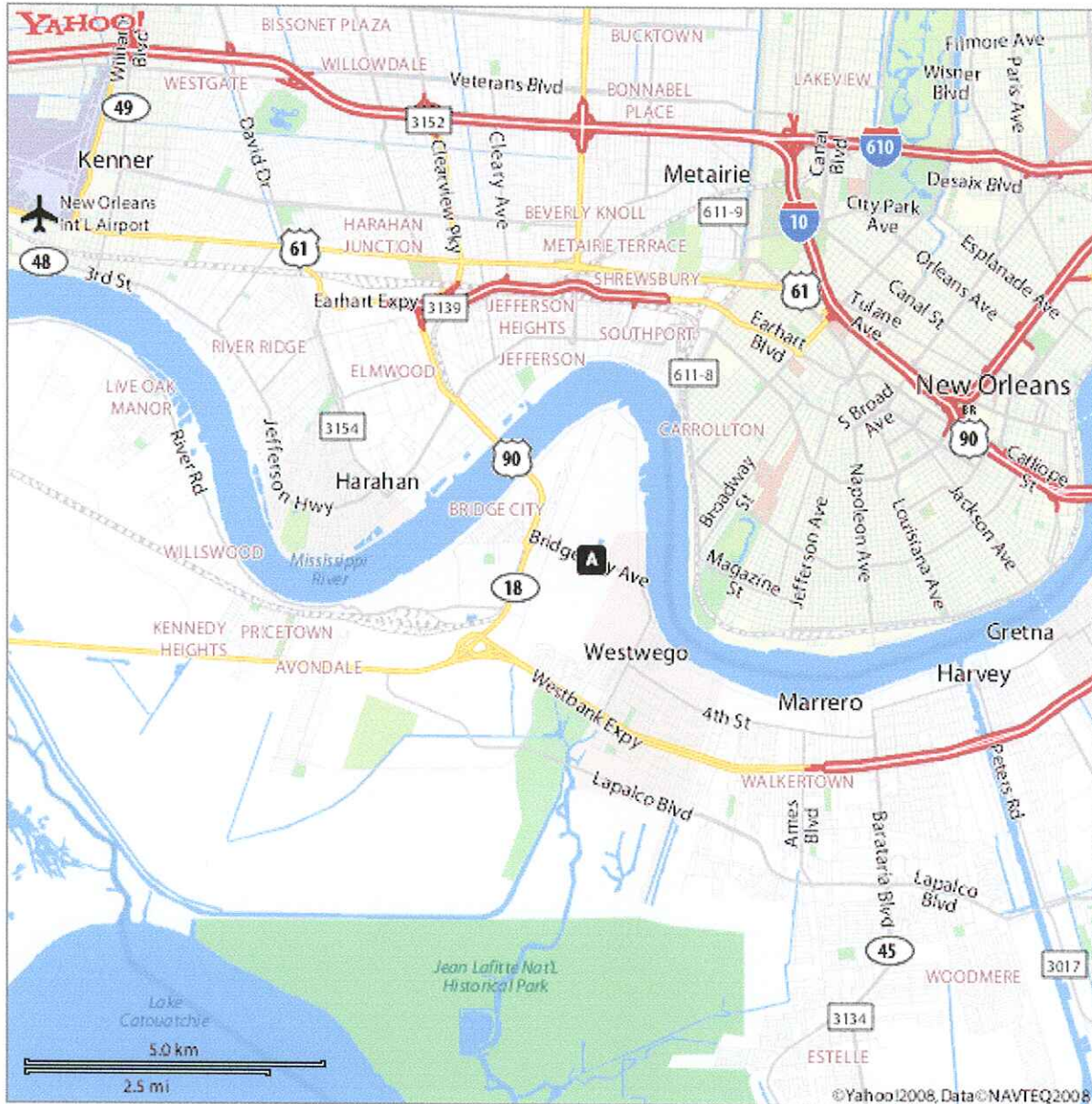
SITE MAP



AST = Above Ground Storage Tank

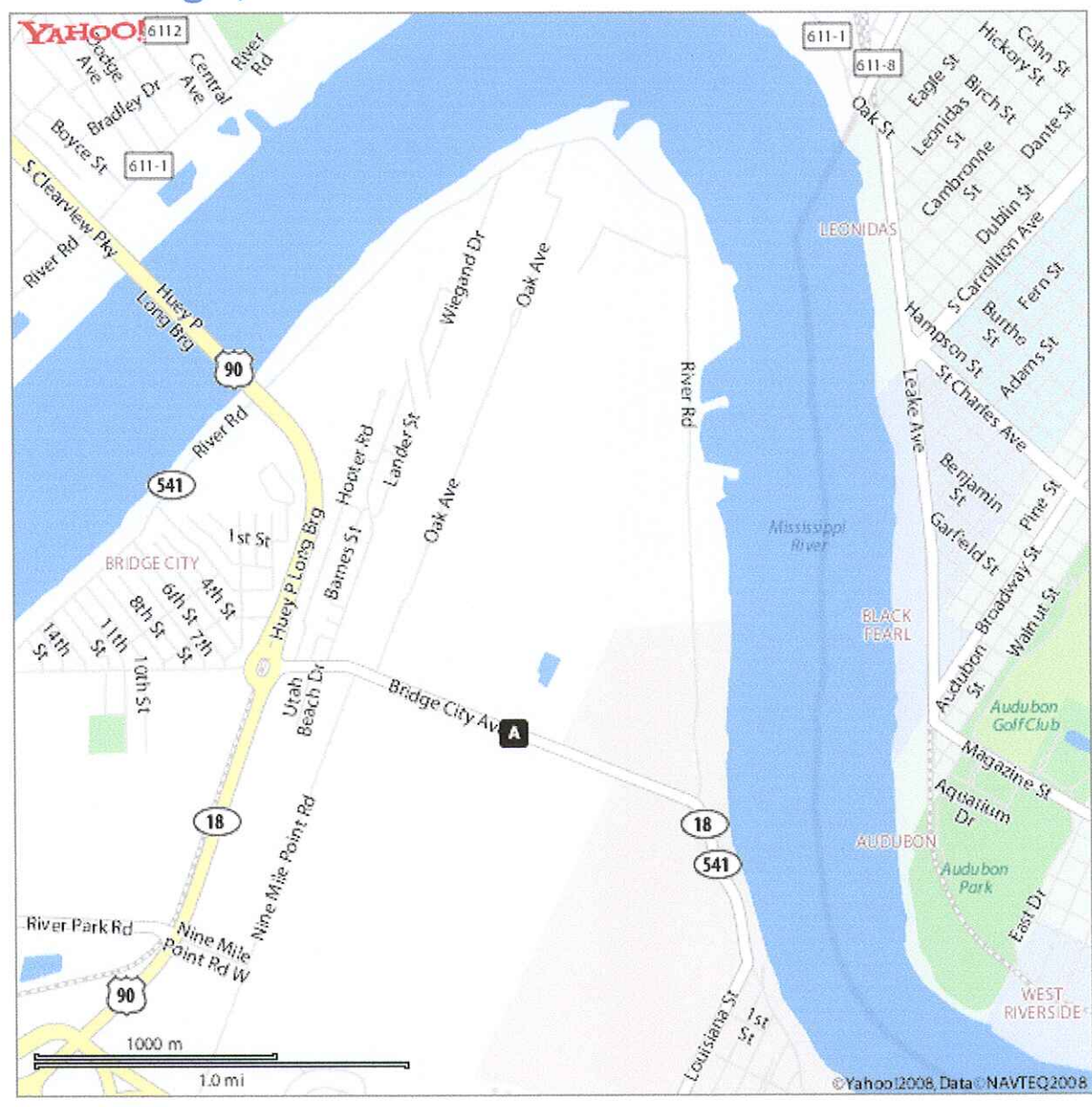
 Aurora Environmental Consultants L.L.C.	SITE Bridge City Pasture		
	ADDRESS 536 Bridge City Avenue Westwego, LA		
	DATE 9/17/08	JOB NO 1429	APPROXIMATE SCALE not to scale
	REVISION DATE -	DRW BY hf	SHEET 1 of 1

Map of 536 Bridge City Ave, Westwego, LA 70094-3519

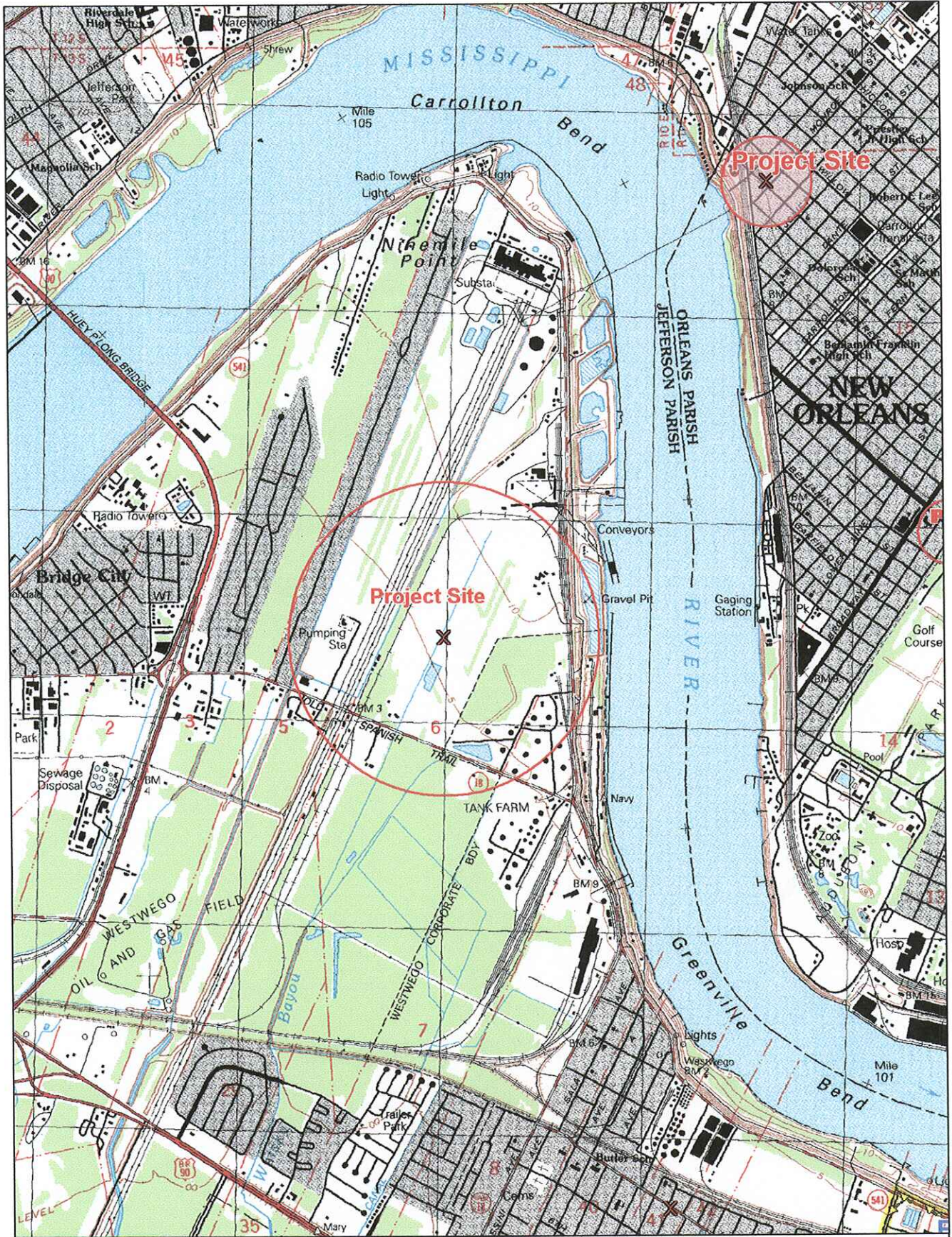


When using any driving directions or map, it's a good idea to do a reality check and make sure the road still exists, watch out for construction, and follow all traffic safety precautions. This is only to be used as an aid in planning.

Map of 536 Bridge City Ave, Westwego, LA 70094-3519



When using any driving directions or map, it's a good idea to do a reality check and make sure the road still exists, watch out for construction, and follow all traffic safety precautions. This is only to be used as an aid in planning.



© 2002 DeLorme. 3-D TopoQuads®. Data copyright of content owner.
www.delorme.com

Scale 1 : 25,000
1" = 2080 ft





AccuLab Inc.

Environmental & Analytical Testing Services

5041 Taravella Road - Marrero, LA 70072 - 504-371-8557 - Fax 504-371-8560
www.acculabnola.com

9/9/2008

Aurora Environmental
Mr. Bernie Hebert
P.O. Box 306
Gretna, LA, 70054-0306

Ref: Analytical Testing
Report Number: 08-235-0220
Project Description: 129 Acre Nine Mile Pt.

Dear Mr. Bernie Hebert:

Acculab, Inc. received 7 sample(s) on 8/22/2008 for the analyses presented in the following report.

The above referenced project has been analyzed per your instructions. Unless otherwise noted, the analyses were performed in our laboratory in accordance with Standard Methods, The Solid Waste Manual SW-846, EPA Methods for Chemical Analysis of Water and Wastes and /or 40 CFR part 136.

The EPA requires that water samples analyzed for pH, dissolved oxygen and total residual chlorine be analyzed in the field. Analyses reported which indicate "Field" for these parameters was analyzed by the client in the field. Results for solid samples are reported on an as received basis unless otherwise specified.

The analytical data has been validated using standard quality control measures performed as required by the analytical method. Quality Assurance, instrumentation maintenance and calibration were performed in accordance with guidelines established by the USEPA.

All quality control measures undertaken in accordance with Acculab, Inc. CompQAP990807A and revisions under the terms of the Louisiana Environmental Laboratory Accreditation Program (Certificate #02041) are within acceptance ranges established that document with the exception of the items indicated and discussed on the QC Summary Report. Samples analyzed by ETC in Memphis, TN (04015).

The results are shown on the attached analysis sheet(s). Thank you for allowing Acculab, Inc. to serve you. Should I be of further assistance, if you have any questions or need additional information please do not hesitate to contact me or client services.

Sincerely,

Anthony J. Albert
Laboratory Director



AccuLab Inc.

Environmental & Analytical Testing Services

5041 Taravella Road - Marrero, LA 70072 - 504-371-8557 - Fax 504-371-8560
www.acculabnola.com

00038

Aurora Environmental
Mr. Bernie Hebert
P.O. Box 306
Gretna, LA 70054-0306

Project ID :
Description : 129 Acre Nine Mile Pt.

Report Date : 9/9/2008

Report Number : **08-235-0220**

REPORT OF ANALYSIS

Received : 8/22/2008

Lab No : **94999**

Matrix: **Aqueous**

Sample ID : **W-1**

Sampled: **8/21/2008 10:39**

Test	Results	Units	ML	Date / Time Analyzed	By	Analytical Method
Total Chromium	0.413	mg/L	0.01	09/03/08 06:58	JTR	EPA-200.7
Total Arsenic	0.188	mg/L	0.02	09/03/08 06:58	JTR	EPA-200.7
Total Silver	<0.01	mg/L	0.01	09/03/08 06:58	JTR	EPA-200.7
Total Cadmium	0.013	mg/L	0.004	09/03/08 06:58	JTR	EPA-200.7
Total Barium	6.30	mg/L	0.02	09/03/08 06:58	JTR	EPA-200.7
Total Mercury	0.0004	mg/L	0.0002	08/29/08 09:51	SH	EPA-245.1
Total Selenium	<0.02	mg/L	0.02	09/03/08 06:58	JTR	EPA-200.7
Total Lead	0.413	mg/L	0.012	09/03/08 06:58	JTR	EPA-200.7

Lab No : **95000**

Matrix: **Aqueous**

Sample ID : **W-2**

Sampled: **8/21/2008 11:05**

Test	Results	Units	ML	Date / Time Analyzed	By	Analytical Method
Total Chromium	0.312	mg/L	0.01	09/03/08 07:05	JTR	EPA-200.7
Total Arsenic	0.156	mg/L	0.02	09/03/08 07:05	JTR	EPA-200.7
Total Silver	<0.01	mg/L	0.01	09/03/08 07:05	JTR	EPA-200.7
Total Cadmium	0.054	mg/L	0.004	09/03/08 07:05	JTR	EPA-200.7
Total Barium	4.90	mg/L	0.02	09/03/08 07:05	JTR	EPA-200.7
Total Mercury	<0.0002	mg/L	0.0002	08/29/08 09:51	SH	EPA-245.1
Total Selenium	0.041	mg/L	0.02	09/03/08 07:05	JTR	EPA-200.7
Total Lead	0.436	mg/L	0.012	09/03/08 07:05	JTR	EPA-200.7

Qualifiers/ Definitions

*	Outside QC limit	B	Analyte detected in blank
C	GCMS Confirmation Analysis	E	Exceeds calibration range
g	GGA outside QC limits	H	Beyond holding time
J	Estimated Value	M	Minimum value
NC	Not confirmed	Q	Surrogate Recovery
T	Sample exhibits toxicity	U	Unconfirmed



AccuLab Inc.

Environmental & Analytical Testing Services

5041 Taravella Road - Marrero, LA 70072 - 504-371-8557 - Fax 504-371-8560
www.acculabnola.com

00038

Aurora Environmental
Mr. Bernie Hebert
P.O. Box 306
Gretna, LA 70054-0306

Project ID :
Description : 129 Acre Nine Mile Pt.

Report Date : 9/9/2008

Report Number : **08-235-0220**

REPORT OF ANALYSIS

Received : 8/22/2008

Lab No : **95001**

Matrix: **Aqueous**

Sample ID : **W-3**

Sampled: **8/21/2008 11:30**

Test	Results	Units	MQL	Date / Time Analyzed	By	Analytical Method
Total Chromium	0.162	mg/L	0.01	09/03/08 07:12	JTR	EPA-200.7
Total Arsenic	0.144	mg/L	0.02	09/03/08 07:12	JTR	EPA-200.7
Total Silver	<0.01	mg/L	0.01	09/03/08 07:12	JTR	EPA-200.7
Total Cadmium	0.024	mg/L	0.004	09/03/08 07:12	JTR	EPA-200.7
Total Barium	5.70	mg/L	0.02	09/03/08 07:12	JTR	EPA-200.7
Total Mercury	<0.0002	mg/L	0.0002	08/29/08 09:51	SH	EPA-245.1
Total Selenium	0.025	mg/L	0.02	09/03/08 07:12	JTR	EPA-200.7
Total Lead	0.197	mg/L	0.012	09/03/08 07:12	JTR	EPA-200.7

Lab No : **95002**

Matrix: **Aqueous**

Sample ID : **W-4**

Sampled: **8/21/2008 12:10**

Test	Results	Units	MQL	Date / Time Analyzed	By	Analytical Method
Total Chromium	0.420	mg/L	0.01	09/03/08 06:16	JTR	EPA-200.7
Total Arsenic	0.102	mg/L	0.02	09/03/08 06:16	JTR	EPA-200.7
Total Silver	<0.01	mg/L	0.01	09/03/08 06:16	JTR	EPA-200.7
Total Cadmium	0.074	mg/L	0.004	09/03/08 06:16	JTR	EPA-200.7
Total Barium	6.40	mg/L	0.02	09/03/08 06:16	JTR	EPA-200.7
Total Mercury	0.0003	mg/L	0.0002	08/29/08 09:51	SH	EPA-245.1
Total Selenium	0.073	mg/L	0.02	09/03/08 06:16	JTR	EPA-200.7
Total Lead	0.482	mg/L	0.012	09/03/08 06:16	JTR	EPA-200.7

Qualifiers/ Definitions

*	Outside QC limit	B	Analyte detected in blank
C	GCMS Confirmation Analysis	E	Exceeds calibration range
g	GGA outside QC limits	H	Beyond holding time
J	Estimated Value	M	Minimum value
NC	Not confirmed	Q	Surrogate Recovery
T	Sample exhibits toxicity	U	Unconfirmed



AccuLab Inc.

Environmental & Analytical Testing Services

5041 Taravella Road - Marrero, LA 70072 - 504-371-8557 - Fax 504-371-8560
www.acculabnola.com

00038

Aurora Environmental
Mr. Bernie Hebert
P.O. Box 306
Gretna, LA 70054-0306

Project ID :
Description : 129 Acre Nine Mile Pt.

Report Date : 9/9/2008

Report Number : **08-235-0220**

REPORT OF ANALYSIS

Received : 8/22/2008

Lab No : **95003**

Matrix: **Aqueous**

Sample ID : **W-5**

Sampled: **8/21/2008 13:15**

Test	Results	Units	MQL	Date / Time Analyzed	By	Analytical Method
Total Chromium	0.329	mg/L	0.01	09/03/08 06:23	JTR	EPA-200.7
Total Arsenic	0.153	mg/L	0.02	09/03/08 06:23	JTR	EPA-200.7
Total Silver	<0.01	mg/L	0.01	09/03/08 06:23	JTR	EPA-200.7
Total Cadmium	0.035	mg/L	0.004	09/03/08 06:23	JTR	EPA-200.7
Total Barium	5.32	mg/L	0.02	09/03/08 06:23	JTR	EPA-200.7
Total Mercury	0.0014	mg/L	0.0002	08/29/08 09:51	SH	EPA-245.1
Total Selenium	<0.02	mg/L	0.02	09/03/08 06:23	JTR	EPA-200.7
Total Lead	0.471	mg/L	0.012	09/03/08 06:23	JTR	EPA-200.7

Lab No : **95004**

Matrix: **Aqueous**

Sample ID : **W-6**

Sampled: **8/21/2008 13:39**

Test	Results	Units	MQL	Date / Time Analyzed	By	Analytical Method
Total Chromium	0.250	mg/L	0.01	09/03/08 06:30	JTR	EPA-200.7
Total Arsenic	0.138	mg/L	0.02	09/03/08 06:30	JTR	EPA-200.7
Total Silver	<0.01	mg/L	0.01	09/03/08 06:30	JTR	EPA-200.7
Total Cadmium	0.008	mg/L	0.004	09/03/08 06:30	JTR	EPA-200.7
Total Barium	5.98	mg/L	0.02	09/03/08 06:30	JTR	EPA-200.7
Total Mercury	<0.0002	mg/L	0.0002	08/29/08 09:51	SH	EPA-245.1
Total Selenium	<0.02	mg/L	0.02	09/03/08 06:30	JTR	EPA-200.7
Total Lead	0.321	mg/L	0.012	09/03/08 06:30	JTR	EPA-200.7

Qualifiers/ Definitions

*	Outside QC limit	B	Analyte detected in blank
C	GCMS Confirmation Analysis	E	Exceeds calibration range
g	GGA outside QC limits	H	Beyond holding time
J	Estimated Value	M	Minimum value
NC	Not confirmed	Q	Surrogate Recovery
T	Sample exhibits toxicity	U	Unconfirmed



AccuLab Inc.

Environmental & Analytical Testing Services

5041 Taravella Road - Marrero, LA 70072 - 504-371-8557 - Fax 504-371-8560
www.acculabnola.com

00038

Aurora Environmental
Mr. Bernie Hebert
P.O. Box 306
Gretna, LA 70054-0306

Project ID :
Description : 129 Acre Nine Mile Pt.

Report Date : 9/9/2008

Report Number : **08-235-0220**

REPORT OF ANALYSIS

Received : 8/22/2008

Lab No : **95005**

Matrix: **Aqueous**

Sample ID : **W-7**

Sampled: **8/21/2008 14:23**

Test	Results	Units	ML	Date / Time Analyzed	By	Analytical Method
Total Chromium	0.446	mg/L	0.01	09/03/08 06:37	JTR	EPA-200.7
Total Arsenic	0.139	mg/L	0.02	09/03/08 06:37	JTR	EPA-200.7
Total Silver	<0.01	mg/L	0.01	09/03/08 06:37	JTR	EPA-200.7
Total Cadmium	0.013	mg/L	0.004	09/03/08 06:37	JTR	EPA-200.7
Total Barium	6.14	mg/L	0.02	09/03/08 06:37	JTR	EPA-200.7
Total Mercury	0.0006	mg/L	0.0002	08/29/08 09:51	SH	EPA-245.1
Total Selenium	<0.02	mg/L	0.02	09/03/08 06:37	JTR	EPA-200.7
Total Lead	0.381	mg/L	0.012	09/03/08 06:37	JTR	EPA-200.7

Qualifiers/ Definitions

*	Outside QC limit	B	Analyte detected in blank
C	GCMS Confirmation Analysis	E	Exceeds calibration range
g	GGA outside QC limits	H	Beyond holding time
J	Estimated Value	M	Minimum value
NC	Not confirmed	Q	Surrogate Recovery
T	Sample exhibits toxicity	U	Unconfirmed



AccuLab Inc.

Environmental & Analytical Testing Services

5041 Taravella Road - Marrero, LA 70072 - 504-371-8557 - Fax 504-371-8560
www.acculabnola.com

CLIENT: Aurora Environmental
Project: 129 Acre Nine Mile Pt.
Lab Order Number: 08-235-0220

CASE NARRATIVE

Date: 09/04/08

ACC01

TPH Extractable Organics by Method 8015B

Surrogate Recovery Failure

Surrogates were flagged for recoveries outside QC limits in several of the associated project samples. These samples were re-analyzed for verification with similar recoveries. Batch QC samples (method blank and laboratory control samples) all showed surrogates within QC limits indicating that failing recoveries were due to the sample matrix.



AccuLab Inc.

Environmental & Analytical Testing Services

5041 Taravella Road - Marrero, LA 70072 - 504-371-8557 - Fax 504-371-8560
www.acculabnola.com

Aurora Environmental
P.O. Box 306
Gretna, LA 70054-0306

Project **129 Acre Nine Mile Pt.**
Description

Lab Order Number **08-235-0220**
Lab ID **0808432-001A**
Field ID **W-1**
Sample Number **94999**

Report of Analysis

Received **08/26/08**
Matrix **Aqueous**
Sampled **08/21/08 10:39**

Analytical Method 8015B

Prep Method	5030B	Prep Batch(s)	21642	Date/Time Prepped	09/03/08 9:59		
Compound	Result	Units	MLQ	DF	Date/Time Analyzed	By	Analytical Batch
TPH-GRO (C6-C10)	< 0.100	mg/L	0.100	1	09/03/08 14:09	PH	35663
Surrogate: 4-Bromofluorobenzene		100 %	Limits: 80-120	1	09/03/08 14:09	PH	35663
Surrogate: 4-Bromochlorobenzene		92 %	Limits: 80-120	1	09/03/08 14:09	PH	35663

Qualifiers/ Definitions			
*	Surrogate Recovery outside accepted limits	* I	Recoveries affected by interferences or high background
B	Analyte detected in the associated Method Blank	DF	Dilution Factor
E	Value exceeds method calibration range	H	Prepped / Analyzed out of holding time.
J	Estimated Value Analyte below reported detection limit	M	Minimum value
MDL	Method Dection Limit (unadjusted)	MLQ	Method Quantitation Limit (adjusted)
MRL	Method Reporting Limit	N	Refer to attached Non-Compliance Report
Q	RPD >40% between primary and confirmation columns	SQL	Sample Quantitation Limit (adjusted MDL)
09/04/08	38 AURORA_ACC		



AccuLab Inc.

Environmental & Analytical Testing Services

5041 Tatavella Road - Marrero, LA 70072 - 504-371-8557 - Fax 504-371-8560
www.acculabnola.com

Aurora Environmental

P.O. Box 306
Gretna, LA 70054-0306

Project **129 Acre Nine Mile Pt.**
Description

Lab Order Number **08-235-0220**
Lab ID **0808432-001A**
Field ID **W-1**
Sample Number **94999**

Report of Analysis

Received **08/26/08**
Matrix **Aqueous**
Sampled **08/21/08 10:39**

Analytical Method 624

Prep Method	624	Prep Batch(s)	21596	Date/Time Prepped	08/28/08 11:33		
Compound	Result	Units	ML	DF	Date/Time Analyzed	By	Analytical Batch
Benzene	< 1.00	µg/L	1.00	1	08/28/08 17:24	VS	35581
Ethylbenzene	< 1.00	µg/L	1.00	1	08/28/08 17:24	VS	35581
Toluene	< 5.00	µg/L	5.00	1	08/28/08 17:24	VS	35581
m,p-Xylene	< 2.00	µg/L	2.00	1	08/28/08 17:24	VS	35581
o-Xylene	< 1.00	µg/L	1.00	1	08/28/08 17:24	VS	35581
Surrogate: Dibromofluoromethane	89 %	Limits: 75-125		1	08/28/08 17:24	VS	35581
Surrogate: Toluene-d8	92 %	Limits: 85-120		1	08/28/08 17:24	VS	35581
Surrogate: 4-Bromofluorobenzene	89 %	Limits: 85-118		1	08/28/08 17:24	VS	35581
Surrogate: 1,2-Dichloroethane-d4	102 %	Limits: 72-132		1	08/28/08 17:24	VS	35581

Qualifiers/Definitions	* Surrogate Recovery outside accepted limits	* I Recoveries affected by interferences or high background
	B Analyte detected in the associated Method Blank	DF Dilution Factor
	E Value exceeds method calibration range	H Prepped / Analyzed out of holding time.
	J Estimated Value Analyte below reported detection limit	M Minimum value
	MDL Method Detection Limit (unadjusted)	SQL Sample Quantitation Limit (adjusted MDL)
	MRL Method Reporting Limit	
	Q RPD >40% between primary and confirmation columns	

09/04/08 38 AURORA_ACC



AccuLab Inc.

Environmental & Analytical Testing Services

5041 Taravelle Road - Marrero, LA 70072 - 504-371-8537 - Fax 504-371-8560
www.acculabnola.com

Aurora Environmental
P.O. Box 306
Gretna, LA 70054-0306

Project **129 Acre Nine Mile Pt.**
Description

Lab Order Number **08-235-0220**
Lab ID **0808432-001B**
Field ID **W-1**
Sample Number **94999**

Report of Analysis

Received **08/26/08**
Matrix **Aqueous**
Sampled **08/21/08 10:39**

Analytical Method 8015B

Prep Method	3510C	Prep Batch(s)	21556	Date/Time Prepped	08/27/08 11:26		
Compound	Result	Units	MQL	DF	Date/Time Analyzed	By	Analytical Batch
TPH-DRO (C10-C28)	0.0993	mg/L	0.0900	1	08/28/08 10:50	KS	35573
TPH-ORO (>C28-C40)	< 0.0900	mg/L	0.0900	1	08/28/08 10:50	KS	35573
Surrogate: o-Terphenyl		67 %	Limits: 50-150	1	08/28/08 10:50	KS	35573

Qualifiers/Definitions			
*	Surrogate Recovery outside accepted limits	* I	Recoveries affected by interferences or high background
B	Analyte detected in the associated Method Blank	DF	Dilution Factor
E	Value exceeds method calibration range	H	Prepped / Analyzed out of holding time.
J	Estimated Value Analyte below reported detection limit	M	Minimum value
MDL	Method Detection Limit (unadjusted)	MQL	Method Quantitation Limit (adjusted)
MRL	Method Reporting Limit	N	Refer to attached Non-Compliance Report
Q	RPD >40% between primary and confirmation columns	SQL	Sample Quantitation Limit (adjusted MDL)

09/04/08 38 AURORA_ACC



AccuLab Inc.

Environmental & Analytical Testing Services

5041 Taravella Road - Marrero, LA 70072 - 504-371-8537 - Fax 504-371-8560
www.acculabnola.com

Aurora Environmental

P.O. Box 306
Gretna, LA 70054-0306

Project **129 Acre Nine Mile Pt.**
Description

Lab Order Number **08-235-0220**
Lab ID **0808432-002A**
Field ID **W-2**
Sample Number **95000**

Report of Analysis

Received **08/26/08**
Matrix **Aqueous**
Sampled **08/21/08 11:05**

Analytical Method 8015B

Prep Method	5030B	Prep Batch(s)	21642	Date/Time Prepped	09/03/08 9:59		
Compound	Result	Units	MQL	DF	Date/Time Analyzed	By	Analytical Batch
TPH-GRO (C6-C10)	< 0.100	mg/L	0.100	1	09/03/08 14:39	PH	35663
Surrogate: 4-Bromofluorobenzene		108 %	Limits: 80-120	1	09/03/08 14:39	PH	35663
Surrogate: 4-Bromochlorobenzene		100 %	Limits: 80-120	1	09/03/08 14:39	PH	35663

Qualifiers/Definitions	* Surrogate Recovery outside accepted limits	* I Recoveries affected by interferences or high background
	B Analyte detected in the associated Method Blank	DF Dilution Factor
	E Value exceeds method calibration range	H Prepped / Analyzed out of holding time.
	J Estimated Value Analyte below reported detection limit	M Minimum value
	MDL Method Dection Limit (unadjusted)	MQL Method Quantitation Limit (adjusted)
	MRL Method Reporting Limit	N Refer to attached Non-Compliance Report
	Q RPD >40% between primary and confirmation columns	SQL Sample Quantitation Limit (adjusted MDL)

09/04/08 38 AURORA_ACC



AccuLab Inc.

Environmental & Analytical Testing Services

5041 Taravelle Road - Marrero, LA 70072 - 504-371-8557 - Fax 504-371-8560
www.acculabnola.com

Aurora Environmental
P.O. Box 306
Gretna, LA 70054-0306

Project **129 Acre Nine Mile Pt.**
Description

Lab Order Number **08-235-0220**
Lab ID **0808432-002A**
Field ID **W-2**
Sample Number **95000**

Report of Analysis

Received **08/26/08**
Matrix **Aqueous**
Sampled **08/21/08 11:05**

Analytical Method 624

Prep Method	624	Prep Batch(s)	21596	Date/Time Prepped	08/28/08 11:33		
Compound	Result	Units	ML	DF	Date/Time Analyzed	By	Analytical Batch
Benzene	< 1.00	µg/L	1.00	1	08/28/08 17:56	VS	35581
Ethylbenzene	< 1.00	µg/L	1.00	1	08/28/08 17:56	VS	35581
Toluene	< 5.00	µg/L	5.00	1	08/28/08 17:56	VS	35581
m,p-Xylene	< 2.00	µg/L	2.00	1	08/28/08 17:56	VS	35581
o-Xylene	< 1.00	µg/L	1.00	1	08/28/08 17:56	VS	35581
Surrogate: Dibromofluoromethane	91 %	Limits: 75-125	1	08/28/08 17:56	VS	35581	
Surrogate: Toluene-d8	92 %	Limits: 85-120	1	08/28/08 17:56	VS	35581	
Surrogate: 4-Bromofluorobenzene	91 %	Limits: 85-118	1	08/28/08 17:56	VS	35581	
Surrogate: 1,2-Dichloroethane-d4	107 %	Limits: 72-132	1	08/28/08 17:56	VS	35581	

Qualifiers/Definitions	* Surrogate Recovery outside accepted limits	* I Recoveries affected by interferences or high background
	B Analyte detected in the associated Method Blank	DF Dilution Factor
	E Value exceeds method calibration range	H Prepped / Analyzed out of holding time.
	J Estimated Value Analyte below reported detection limit	M Minimum value
	MDL Method Detection Limit (unadjusted)	MQL Method Quantitation Limit (adjusted)
	MRL Method Reporting Limit	N Refer to attached Non-Compliance Report
	Q RPD >40% between primary and confirmation columns	SQL Sample Quantitation Limit (adjusted MDL)

09/04/08 38 AURORA_ACC



AccuLab Inc.

Environmental & Analytical Testing Services

3041 Taravelle Road - Marrero, LA 70072 - 504-371-8557 - Fax 504-371-8560
www.acculabnola.com

Aurora Environmental
P.O. Box 306
Gretna, LA 70054-0306

Project **129 Acre Nine Mile Pt.**
Description

Lab Order Number **08-235-0220**
Lab ID **0808432-002B**
Field ID **W-2**
Sample Number **95000**

Report of Analysis

Received **08/26/08**
Matrix **Aqueous**
Sampled **08/21/08 11:05**

Analytical Method 8015B

Prep Method	3510C	Prep Batch(s)	21556	Date/Time Prepped	08/27/08 11:26		
Compound	Result	Units	MQL	DF	Date/Time Analyzed	By	Analytical Batch
TPH-DRO (C10-C28)	< 0.0938	mg/L	0.0938	1	08/28/08 11:10	KS	35573
TPH-ORO (>C28-C40)	< 0.0938	mg/L	0.0938	1	08/28/08 11:10	KS	35573
Surrogate: o-Terphenyl		57 %	Limits: 50-150	1	08/28/08 11:10	KS	35573

Qualifiers/ Definitions	* Surrogate Recovery outside accepted limits	* I Recoveries affected by interferences or high background
	B Analyte detected in the associated Method Blank	DF Dilution Factor
	E Value exceeds method calibration range	H Prepped / Analyzed out of holding time.
	J Estimated Value Analyte below reported detection limit	M Minimum value
	MDL Method Dection Limit (unadjusted)	MQL Method Quantitation Limit (adjusted)
	MRL Method Reporting Limit	N Refer to attached Non-Compliance Report
	Q RPD >40% between primary and confirmation columns	SQL Sample Quantitation Limit (adjusted MDL)
09/04/08 38	AURORA_ACC	



AccuLab Inc.

Environmental & Analytical Testing Services

5041 Tatavella Road - Marrero, LA 70072 - 504-371-8337 - Fax 504-371-8560
www.acculabinc.com

Aurora Environmental
P.O. Box 306
Gretna, LA 70054-0306

Project **129 Acre Nine Mile Pt.**
Description

Lab Order Number **08-235-0220**
Lab ID **0808432-003A**
Field ID **W-3**
Sample Number **95001**

Report of Analysis

Received **08/26/08**
Matrix **Aqueous**
Sampled **08/21/08 11:30**

Analytical Method 8015B

Prep Method 5030B Prep Batch(s) 21642 Date/Time Prepped 09/03/08 9:59

Compound	Result	Units	MQL	DF	Date/Time Analyzed	By	Analytical Batch
TPH-GRO (C6-C10)	< 0.100	mg/L	0.100	1	09/03/08 15:08	PH	35663
Surrogate: 4-Bromofluorobenzene		104 %	Limits: 80-120	1	09/03/08 15:08	PH	35663
Surrogate: 4-Bromochlorobenzene		96 %	Limits: 80-120	1	09/03/08 15:08	PH	35663

Qualifiers/ Definitions			
*	Surrogate Recovery outside accepted limits	* I	Recoveries affected by interferences or high background
B	Analyte detected in the associated Method Blank	DF	Dilution Factor
E	Value exceeds method calibration range	H	Prepped / Analyzed out of holding time.
J	Estimated Value Analyte below reported detection limit	M	Minimum value
MDL	Method Detection Limit (unadjusted)	MQL	Method Quantitation Limit (adjusted)
MRL	Method Reporting Limit	N	Refer to attached Non-Compliance Report
Q	RPD >40% between primary and confirmation columns	SQL	Sample Quantitation Limit (adjusted MDL)

09/04/08 38 AURORA_ACC



AccuLab Inc.

Environmental & Analytical Testing Services

5041 Taravelle Road - Marrero, LA 70072 - 504-371-8557 - Fax 504-371-8560
www.acculabinfo.com

Aurora Environmental
P.O. Box 306
Gretna, LA 70054-0306

Project **129 Acre Nine Mile Pt.**
Description

Lab Order Number **08-235-0220**
Lab ID **0808432-003A**
Field ID **W-3**
Sample Number **95001**

Report of Analysis

Received **08/26/08**
Matrix **Aqueous**
Sampled **08/21/08 11:30**

Analytical Method 624

Prep Method 624 Prep Batch(s) 21596 Date/Time Prepped 08/28/08 11:33

Compound	Result	Units	ML	DF	Date/Time Analyzed	By	Analytical Batch
Benzene	< 1.00	µg/L	1.00	1	08/28/08 18:27	VS	35581
Ethylbenzene	< 1.00	µg/L	1.00	1	08/28/08 18:27	VS	35581
Toluene	< 5.00	µg/L	5.00	1	08/28/08 18:27	VS	35581
m,p-Xylene	< 2.00	µg/L	2.00	1	08/28/08 18:27	VS	35581
o-Xylene	< 1.00	µg/L	1.00	1	08/28/08 18:27	VS	35581
Surrogate: Dibromofluoromethane	82 %	Limits: 75-125		1	08/28/08 18:27	VS	35581
Surrogate: Toluene-d8	91 %	Limits: 85-120		1	08/28/08 18:27	VS	35581
Surrogate: 4-Bromofluorobenzene	87 %	Limits: 85-118		1	08/28/08 18:27	VS	35581
Surrogate: 1,2-Dichloroethane-d4	105 %	Limits: 72-132		1	08/28/08 18:27	VS	35581

Qualifiers/Definitions			
*	Surrogate Recovery outside accepted limits	* I	Recoveries affected by interferences or high background
B	Analyte detected in the associated Method Blank	DF	Dilution Factor
E	Value exceeds method calibration range	H	Prepped / Analyzed out of holding time.
J	Estimated Value Analyte below reported detection limit	M	Minimum value
MDL	Method Detection Limit (unadjusted)	SQL	Sample Quantitation Limit (adjusted MDL)
MRL	Method Reporting Limit	N	Refer to attached Non-Compliance Report
Q	RPD >40% between primary and confirmation columns		

09/04/08 38 AURORA_ACC



AccuLab Inc.

Environmental & Analytical Testing Services

5041 Taravelle Road - Marrero, LA 70072 - 504-371-8557 - Fax 504-371-8560
www.acculabnola.com

Aurora Environmental

P.O. Box 306
Gretna, LA 70054-0306

Project **129 Acre Nine Mile Pt.**
Description

Lab Order Number **08-235-0220**
Lab ID **0808432-003B**
Field ID **W-3**
Sample Number **95001**

Report of Analysis

Received **08/26/08**
Matrix **Aqueous**
Sampled **08/21/08 11:30**

Analytical Method 8015B

Prep Method	3510C	Prep Batch(s)	21556	Date/Time Prepped	08/27/08 11:26		
Compound	Result	Units	MQL	DF	Date/Time Analyzed	By	Analytical Batch
TPH-DRO (C10-C28)	0.0948	mg/L	0.0900	1	08/28/08 11:30	KS	35573
TPH-ORO (>C28-C40)	< 0.0900	mg/L	0.0900	1	08/28/08 11:30	KS	35573
Surrogate: o-Terphenyl		70 %	Limits: 50-150	1	08/28/08 11:30	KS	35573

Qualifiers/Definitions	* Surrogate Recovery outside accepted limits	* I Recoveries affected by interferences or high background
	B Analyte detected in the associated Method Blank	DF Dilution Factor
	E Value exceeds method calibration range	H Prepped / Analyzed out of holding time.
	J Estimated Value Analyte below reported detection limit	M Minimum value
	MDL Method Dection Limit (unadjusted)	MQL Method Quantitation Limit (adjusted)
	MRL Method Reporting Limit	N Refer to attached Non-Compliance Report
	Q RPD >40% between primary and confirmation columns	SQL Sample Quantitation Limit (adjusted MDL)

09/04/08 38 AURORA_ACC



AccuLab Inc.

Environmental & Analytical Testing Services

8041 Taravelle Road - Marrero, LA 70072 - 504-371-8557 - Fax 504-371-8560
www.acculabinc.com

Aurora Environmental
P.O. Box 306
Gretna, LA 70054-0306

Project **129 Acre Nine Mile Pt.**
Description

Lab Order Number **08-235-0220**
Lab ID **0808432-004A**
Field ID **W-4**
Sample Number **95002**

Report of Analysis

Received **08/26/08**
Matrix **Aqueous**
Sampled **08/21/08 12:10**

Analytical Method 8015B

Prep Method	5030B	Prep Batch(s)	21642	Date/Time Prepped	09/03/08 9:59		
Compound	Result	Units	MLQ	DF	Date/Time Analyzed	By	Analytical Batch
TPH-GRO (C6-C10)	< 0.100	mg/L	0.100	1	09/03/08 16:10	PH	35663
Surrogate: 4-Bromofluorobenzene		102 %	Limits: 80-120	1	09/03/08 16:10	PH	35663
Surrogate: 4-Bromochlorobenzene		96 %	Limits: 80-120	1	09/03/08 16:10	PH	35663

Qualifiers/ Definitions	* Surrogate Recovery outside accepted limits	* I Recoveries affected by interferences or high background
	B Analyte detected in the associated Method Blank	DF Dilution Factor
	E Value exceeds method calibration range	H Prepped / Analyzed out of holding time.
	J Estimated Value Analyte below reported detection limit	M Minimum value
	MDL Method Detection Limit (unadjusted)	MQL Method Quantitation Limit (adjusted)
	MRL Method Reporting Limit	N Refer to attached Non-Compliance Report
	Q RPD >40% between primary and confirmation columns	SQL Sample Quantitation Limit (adjusted MDL)

09/04/08 38 AURORA_ACC



AccuLab Inc.

Environmental & Analytical Testing Services

5041 Taravelle Road - Marrero, LA 70072 - 504-371-8337 - Fax 504-371-8560
www.acculabnote.com

Aurora Environmental
P.O. Box 306
Gretna, LA 70054-0306

Project **129 Acre Nine Mile Pt.**
Description

Lab Order Number **08-235-0220**
Lab ID **0808432-004A**
Field ID **W-4**
Sample Number **95002**

Report of Analysis

Received **08/26/08**
Matrix **Aqueous**
Sampled **08/21/08 12:10**

Analytical Method 624

Prep Method	624	Prep Batch(s)	21596	Date/Time Prepped	08/28/08 11:33		
Compound	Result	Units	ML	DF	Date/Time Analyzed	By	Analytical Batch
Benzene	< 1.00	µg/L	1.00	1	08/28/08 18:58	VS	35581
Ethylbenzene	< 1.00	µg/L	1.00	1	08/28/08 18:58	VS	35581
Toluene	< 5.00	µg/L	5.00	1	08/28/08 18:58	VS	35581
m,p-Xylene	< 2.00	µg/L	2.00	1	08/28/08 18:58	VS	35581
o-Xylene	< 1.00	µg/L	1.00	1	08/28/08 18:58	VS	35581
Surrogate: Dibromofluoromethane	88 %	Limits: 75-125		1	08/28/08 18:58	VS	35581
Surrogate: Toluene-d8	94 %	Limits: 85-120		1	08/28/08 18:58	VS	35581
Surrogate: 4-Bromofluorobenzene	93 %	Limits: 85-118		1	08/28/08 18:58	VS	35581
Surrogate: 1,2-Dichloroethane-d4	105 %	Limits: 72-132		1	08/28/08 18:58	VS	35581

Qualifiers/Definitions	* Surrogate Recovery outside accepted limits	* I Recoveries affected by interferences or high background
B	Analyte detected in the associated Method Blank	DF Dilution Factor
E	Value exceeds method calibration range	H Prepped / Analyzed out of holding time.
J	Estimated Value Analyte below reported detection limit	M Minimum value
MDL	Method Detection Limit (unadjusted)	SQL Method Quantitation Limit (adjusted)
MRL	Method Reporting Limit	N Refer to attached Non-Compliance Report
Q	RPD >40% between primary and confirmation columns	SQL Sample Quantitation Limit (adjusted MDL)

09/04/08 38 AURORA_ACC



AccuLab Inc.

Environmental & Analytical Testing Services

8011 Taravelle Road - Marrero, LA 70072 - 504-371-8557 - Fax 504-371-8568
www.acculabnote.com

Aurora Environmental
P.O. Box 306
Gretna, LA 70054-0306

Project **129 Acre Nine Mile Pt.**
Description

Lab Order Number **08-235-0220**
Lab ID **0808432-004B**
Field ID **W-4**
Sample Number **95002**

Report of Analysis

Received **08/26/08**
Matrix **Aqueous**
Sampled **08/21/08 12:10**

Analytical Method 8015B

Prep Method	3510C	Prep Batch(s)	21556	Date/Time Prepped	08/27/08 11:26		
Compound	Result	Units	MQL	DF	Date/Time Analyzed	By	Analytical Batch
TPH-DRO (C10-C28)	< 0.105	mg/L	0.105	1	08/28/08 11:50	KS	35573
TPH-ORO (>C28-C40)	< 0.105	mg/L	0.105	1	08/28/08 11:50	KS	35573
Surrogate: o-Terphenyl		21 % *	Limits: 50-150	1	08/28/08 11:50	KS	35573

Qualifiers/Definitions	* Surrogate Recovery outside accepted limits	* I Recoveries affected by interferences or high background
	B Analyte detected in the associated Method Blank	DF Dilution Factor
	E Value exceeds method calibration range	H Prepped / Analyzed out of holding time.
	J Estimated Value Analyte below reported detection limit	M Minimum value
	MDL Method Detection Limit (unadjusted)	MQL Method Quantitation Limit (adjusted)
	MRL Method Reporting Limit	N Refer to attached Non-Compliance Report
	Q RPD >40% between primary and confirmation columns	SQL Sample Quantitation Limit (adjusted MDL)

09/04/08 38 AURORA_ACC



AccuLab Inc.

Environmental & Analytical Testing Services

8041 Taravelle Road - Marrero, LA 70072 - 504-371-8957 - Fax 504-371-8568
www.acculabnola.com

Aurora Environmental

P.O. Box 306
Gretna, LA 70054-0306

Project **129 Acre Nine Mile Pt.**
Description

Lab Order Number **08-235-0220**
Lab ID **0808432-005A**
Field ID **W-5**
Sample Number **95003**

Report of Analysis

Received **08/26/08**
Matrix **Aqueous**
Sampled **08/21/08 13:15**

Analytical Method 8015B

Prep Method	5030B	Prep Batch(s)	21642	Date/Time Prepped	09/03/08 9:59		
Compound	Result	Units	MLQ	DF	Date/Time Analyzed	By	Analytical Batch
TPH-GRO (C6-C10)	0.108	mg/L	0.100	1	09/03/08 16:40	PH	35663
Surrogate: 4-Bromofluorobenzene		104 %	Limits: 80-120	1	09/03/08 16:40	PH	35663
Surrogate: 4-Bromochlorobenzene		98 %	Limits: 80-120	1	09/03/08 16:40	PH	35663

Qualifiers/ Definitions	* Surrogate Recovery outside accepted limits	* I Recoveries affected by interferences or high background
	B Analyte detected in the associated Method Blank	DF Dilution Factor
	E Value exceeds method calibration range	H Prepped / Analyzed out of holding time.
	J Estimated Value Analyte below reported detection limit	M Minimum value
	MDL Method Detection Limit (unadjusted)	MQL Method Quantitation Limit (adjusted)
	MRL Method Reporting Limit	N Refer to attached Non-Compliance Report
	Q RPD >40% between primary and confirmation columns	SQL Sample Quantitation Limit (adjusted MDL)
09/04/08 38	AURORA_ACC	



AccuLab Inc.

Environmental & Analytical Testing Services

3011 Taravelle Road - Marrero, LA 70072 - 504-371-8957 - Fax 504-371-8568
www.acculabmo.com

Aurora Environmental
P.O. Box 306
Gretna, LA 70054-0306

Project **129 Acre Nine Mile Pt.**
Description

Lab Order Number **08-235-0220**
Lab ID **0808432-005A**
Field ID **W-5**
Sample Number **95003**

Report of Analysis

Received **08/26/08**
Matrix **Aqueous**
Sampled **08/21/08 13:15**

Analytical Method 624

Prep Method	624	Prep Batch(s)	21596	Date/Time Prepped	08/28/08 11:33		
Compound	Result	Units	MQL	DF	Date/Time Analyzed	By	Analytical Batch
Benzene	< 1.00	µg/L	1.00	1	08/28/08 19:29	VS	35581
Ethylbenzene	< 1.00	µg/L	1.00	1	08/28/08 19:29	VS	35581
Toluene	5.37	µg/L	5.00	1	08/28/08 19:29	VS	35581
m,p-Xylene	< 2.00	µg/L	2.00	1	08/28/08 19:29	VS	35581
o-Xylene	< 1.00	µg/L	1.00	1	08/28/08 19:29	VS	35581
Surrogate: Dibromofluoromethane	93 %	Limits: 75-125		1	08/28/08 19:29	VS	35581
Surrogate: Toluene-d8	90 %	Limits: 85-120		1	08/28/08 19:29	VS	35581
Surrogate: 4-Bromofluorobenzene	88 %	Limits: 85-118		1	08/28/08 19:29	VS	35581
Surrogate: 1,2-Dichloroethane-d4	114 %	Limits: 72-132		1	08/28/08 19:29	VS	35581

Qualifiers/Definitions	* Surrogate Recovery outside accepted limits	* I Recoveries affected by interferences or high background
	B Analyte detected in the associated Method Blank	DF Dilution Factor
	E Value exceeds method calibration range	H Prepped / Analyzed out of holding time.
	J Estimated Value Analyte below reported detection limit	M Minimum value
	MDL Method Detection Limit (unadjusted)	MQL Method Quantitation Limit (adjusted)
	MRL Method Reporting Limit	N Refer to attached Non-Compliance Report
	Q RPD >40% between primary and confirmation columns	SQL Sample Quantitation Limit (adjusted MDL)

09/04/08 38 AURORA_ACC



AccuLab Inc.

Environmental & Analytical Testing Services

8041 Taravelle Road - Marrero, LA 70072 - 504-371-8557 - Fax 504-371-8560
www.acculabnola.com

Aurora Environmental

P.O. Box 306
Gretna, LA 70054-0306

Project **129 Acre Nine Mile Pt.**
Description

Lab Order Number **08-235-0220**
Lab ID **0808432-005B**
Field ID **W-5**
Sample Number **95003**

Report of Analysis

Received **08/26/08**
Matrix **Aqueous**
Sampled **08/21/08 13:15**

Analytical Method 8015B

Prep Method	3510C	Prep Batch(s)	21556	Date/Time Prepped	08/27/08 11:26		
Compound	Result	Units	MQL	DF	Date/Time Analyzed	By	Analytical Batch
TPH-DRO (C10-C28)	0.262	mg/L	0.108	1	08/28/08 12:10	KS	35573
TPH-ORO (>C28-C40)	< 0.108	mg/L	0.108	1	08/28/08 12:10	KS	35573
Surrogate: o-Terphenyl		79 %	Limits: 50-150	1	08/28/08 12:10	KS	35573

Qualifiers/ Definitions

* Surrogate Recovery outside accepted limits	* I Recoveries affected by interferences or high background
B Analyte detected in the associated Method Blank	DF Dilution Factor
E Value exceeds method calibration range	H Prepped / Analyzed out of holding time.
J Estimated Value Analyte below reported detection limit	M Minimum value
MDL Method Detection Limit (unadjusted)	MQL Method Quantitation Limit (adjusted)
MRL Method Reporting Limit	N Refer to attached Non-Compliance Report
Q RPD >40% between primary and confirmation columns	SQL Sample Quantitation Limit (adjusted MDL)

09/04/08 38 AURORA_ACC



AccuLab Inc.

Environmental & Analytical Testing Services

5011 Taravelle Road - Marrero, LA 70072 - 504-371-8957 - Fax 504-371-8560
www.acculabmo.com

Aurora Environmental

P.O. Box 306
Gretna, LA 70054-0306

Project **129 Acre Nine Mile Pt.**
Description

Lab Order Number **08-235-0220**
Lab ID **0808432-006A**
Field ID **W-6**
Sample Number **95004**

Report of Analysis

Received **08/26/08**
Matrix **Aqueous**
Sampled **08/21/08 13:39**

Analytical Method 8015B

Prep Method 5030B Prep Batch(s) 21642 Date/Time Prepped 09/03/08 9:59

Compound	Result	Units	MQL	DF	Date/Time		By	Analytical Batch
					Prepped	Analyzed		
TPH-GRO (C6-C10)	< 0.100	mg/L	0.100	1	09/03/08 17:09	09/03/08 17:09	PH	35663
Surrogate: 4-Bromofluorobenzene		104 %	Limits: 80-120	1	09/03/08 17:09	09/03/08 17:09	PH	35663
Surrogate: 4-Bromochlorobenzene		97 %	Limits: 80-120	1	09/03/08 17:09	09/03/08 17:09	PH	35663

Qualifiers/Definitions		
*	Surrogate Recovery outside accepted limits	* I Recoveries affected by interferences or high background
B	Analyte detected in the associated Method Blank	DF Dilution Factor
E	Value exceeds method calibration range	H Prepped / Analyzed out of holding time.
J	Estimated Value Analyte below reported detection limit	M Minimum value
MDL	Method Dection Limit (unadjusted)	MQL Method Quantitation Limit (adjusted)
MRL	Method Reporting Limit	N Refer to attached Non-Compliance Report
Q	RPD >40% between primary and confirmation columns	SQL Sample Quantitation Limit (adjusted MDL)

09/04/08 38 AURORA_ACC



AccuLab Inc.

Environmental & Analytical Testing Services

5041 Taravelle Road - Marrero, LA 70072 - 504-371-8357 - Fax 504-371-8580
www.acculabnola.com

Aurora Environmental

P.O. Box 306

Gretna, LA 70054-0306

Project 129 Acre Nine Mile Pt.

Description

Lab Order Number 08-235-0220

Lab ID 0808432-006A

Field ID W-6

Sample Number 95004

Report of Analysis

Received 08/26/08

Matrix Aqueous

Sampled 08/21/08 13:39

Analytical Method 624

Prep Method 624 Prep Batch(s) 21596 Date/Time Prepped 08/28/08 11:33

Compound	Result	Units	MQL	DF	Date/Time		Analytical
					Analyzed	By	
Benzene	< 1.00	µg/L	1.00	1	08/28/08 20:00	VS	35581
Ethylbenzene	< 1.00	µg/L	1.00	1	08/28/08 20:00	VS	35581
Toluene	< 5.00	µg/L	5.00	1	08/28/08 20:00	VS	35581
m,p-Xylene	< 2.00	µg/L	2.00	1	08/28/08 20:00	VS	35581
o-Xylene	< 1.00	µg/L	1.00	1	08/28/08 20:00	VS	35581
Surrogate: Dibromofluoromethane	86 %	Limits: 75-125		1	08/28/08 20:00	VS	35581
Surrogate: Toluene-d8	91 %	Limits: 85-120		1	08/28/08 20:00	VS	35581
Surrogate: 4-Bromofluorobenzene	93 %	Limits: 85-118		1	08/28/08 20:00	VS	35581
Surrogate: 1,2-Dichloroethane-d4	102 %	Limits: 72-132		1	08/28/08 20:00	VS	35581

Qualifiers/ Definitions

* Surrogate Recovery outside accepted limits	* I Recoveries affected by interferences or high background
B Analyte detected in the associated Method Blank	DF Dilution Factor
E Value exceeds method calibration range	H Prepped / Analyzed out of holding time.
J Estimated Value Analyte below reported detection limit	M Minimum value
MDL Method Detection Limit (unadjusted)	MQL Method Quantitation Limit (adjusted)
MRL Method Reporting Limit	N Refer to attached Non-Compliance Report
Q RPD >40% between primary and confirmation columns	SQL Sample Quantitation Limit (adjusted MDL)

09/04/08 38 AURORA_ACC



AccuLab Inc.

Environmental & Analytical Testing Services

5011 Taravelle Road - Marrero, LA 70072 - 504-371-8557 - Fax 504-371-8568
www.acculabnote.com

Aurora Environmental
P.O. Box 306
Gretna, LA 70054-0306

Project **129 Acre Nine Mile Pt.**
Description

Lab Order Number **08-235-0220**
Lab ID **0808432-006B**
Field ID **W-6**
Sample Number **95004**

Report of Analysis

Received **08/26/08**
Matrix **Aqueous**
Sampled **08/21/08 13:39**

Analytical Method 8015B

Prep Method	3510C	Prep Batch(s)	21556	Date/Time Prepped	08/27/08 11:26		
Compound	Result	Units	MQL	DF	Date/Time Analyzed	By	Analytical Batch
TPH-DRO (C10-C28)	< 0.184	mg/L	0.184	1	08/28/08 12:30	KS	35573
TPH-ORO (>C28-C40)	< 0.184	mg/L	0.184	1	08/28/08 12:30	KS	35573
Surrogate: o-Terphenyl		76 %	Limits: 50-150	1	08/28/08 12:30	KS	35573

Qualifiers/ Definitions			
*	Surrogate Recovery outside accepted limits	* I	Recoveries affected by interferences or high background
B	Analyte detected in the associated Method Blank	DF	Dilution Factor
E	Value exceeds method calibration range	H	Prepped / Analyzed out of holding time.
J	Estimated Value Analyte below reported detection limit	M	Minimum value
MDL	Method Dection Limit (unadjusted)	MQL	Method Quantitation Limit (adjusted)
MRL	Method Reporting Limit	N	Refer to attached Non-Compliance Report
Q	RPD >40% between primary and confirmation columns	SQL	Sample Quantitation Limit (adjusted MDL)

09/04/08 38 AURORA_ACC



AccuLab Inc.

Environmental & Analytical Testing Services

5041 Taravelle Road - Marrero, LA 70072 - 504-371-8957 - Fax 504-371-8560
www.acculabinc.com

Aurora Environmental
P.O. Box 306
Gretna, LA 70054-0306

Project **129 Acre Nine Mile Pt.**
Description

Lab Order Number **08-235-0220**
Lab ID **0808432-007A**
Field ID **W-7**
Sample Number **95005**

Report of Analysis

Received **08/26/08**
Matrix **Aqueous**
Sampled **08/21/08 14:23**

Analytical Method 8015B

Prep Method	5030B	Prep Batch(s)	21642	Date/Time Prepped	09/03/08 9:59		
Compound	Result	Units	MLQ	DF	Date/Time Analyzed	By	Analytical Batch
TPH-GRO (C6-C10)	< 0.100	mg/L	0.100	1	09/03/08 17:38	PH	35663
Surrogate: 4-Bromofluorobenzene		105 %	Limits: 80-120	1	09/03/08 17:38	PH	35663
Surrogate: 4-Bromochlorobenzene		96 %	Limits: 80-120	1	09/03/08 17:38	PH	35663

Qualifiers/Definitions	* Surrogate Recovery outside accepted limits	* I Recoveries affected by interferences or high background
	B Analyte detected in the associated Method Blank	DF Dilution Factor
	E Value exceeds method calibration range	H Prepped / Analyzed out of holding time.
	J Estimated Value Analyte below reported detection limit	M Minimum value
	MDL Method Detection Limit (unadjusted)	MLQ Method Quantitation Limit (adjusted)
	MRL Method Reporting Limit	N Refer to attached Non-Compliance Report
	Q RPD >40% between primary and confirmation columns	SQL Sample Quantitation Limit (adjusted MDL)
09/04/08 38	AURORA_ACC	



AccuLab Inc.

Environmental & Analytical Testing Services

3041 Taravelle Road - Marrero, LA 70072 - 504-371-8557 - Fax 504-371-8560
www.acculabmole.com

Aurora Environmental
P.O. Box 306
Gretna, LA 70054-0306

Project **129 Acre Nine Mile Pt.**
Description

Lab Order Number **08-235-0220**
Lab ID **0808432-007A**
Field ID **W-7**
Sample Number **95005**

Report of Analysis

Received **08/26/08**
Matrix **Aqueous**
Sampled **08/21/08 14:23**

Analytical Method 624

Prep Method	624	Prep Batch(s)	21596	Date/Time Prepped	08/28/08 11:33		
Compound	Result	Units	MLQ	DF	Date/Time Analyzed	By	Analytical Batch
Benzene	< 1.00	µg/L	1.00	1	08/28/08 20:31	VS	35581
Ethylbenzene	< 1.00	µg/L	1.00	1	08/28/08 20:31	VS	35581
Toluene	< 5.00	µg/L	5.00	1	08/28/08 20:31	VS	35581
m,p-Xylene	< 2.00	µg/L	2.00	1	08/28/08 20:31	VS	35581
o-Xylene	< 1.00	µg/L	1.00	1	08/28/08 20:31	VS	35581
Surrogate: Dibromofluoromethane	93 %	Limits: 75-125		1	08/28/08 20:31	VS	35581
Surrogate: Toluene-d8	94 %	Limits: 85-120		1	08/28/08 20:31	VS	35581
Surrogate: 4-Bromofluorobenzene	92 %	Limits: 85-118		1	08/28/08 20:31	VS	35581
Surrogate: 1,2-Dichloroethane-d4	107 %	Limits: 72-132		1	08/28/08 20:31	VS	35581

Qualifiers/Definitions	* Surrogate Recovery outside accepted limits	* I Recoveries affected by interferences or high background
	B Analyte detected in the associated Method Blank	DF Dilution Factor
	E Value exceeds method calibration range	H Prepped / Analyzed out of holding time.
	J Estimated Value Analyte below reported detection limit	M Minimum value
	MDL Method Detection Limit (unadjusted)	MQL Method Quantitation Limit (adjusted)
	MRL Method Reporting Limit	N Refer to attached Non-Compliance Report
	Q RPD >40% between primary and confirmation columns	SQL Sample Quantitation Limit (adjusted MDL)

09/04/08 38 AURORA_ACC



AccuLab Inc.

Environmental & Analytical Testing Services

5041 Taravelle Road - Marrero, LA 70072 - 504-371-8337 - Fax 504-371-8560
www.acculabools.com

Aurora Environmental

P.O. Box 306

Gretna, LA 70054-0306

Project 129 Acre Nine Mile Pt.

Description

Lab Order Number 08-235-0220

Lab ID 0808432-007B

Field ID W-7

Sample Number 95005

Report of Analysis

Received 08/26/08

Matrix Aqueous

Sampled 08/21/08 14:23

Analytical Method 8015B

Prep Method 3510C

Prep Batch(s) 21556

Date/Time Prepped 08/27/08 11:26

Compound	Result	Units	MQL	DF	Date/Time Analyzed	By	Analytical Batch
TPH-DRO (C10-C28)	< 0.0957	mg/L	0.0957	1	08/28/08 12:50	KS	35573
TPH-ORO (>C28-C40)	< 0.0957	mg/L	0.0957	1	08/28/08 12:50	KS	35573
Surrogate: o-Terphenyl		11 % *	Limits: 50-150	1	08/28/08 12:50	KS	35573

Qualifiers/ Definitions

- * Surrogate Recovery outside accepted limits
- B Analyte detected in the associated Method Blank
- E Value exceeds method calibration range
- J Estimated Value Analyte below reported detection limit
- MDL Method Detection Limit (unadjusted)
- MRL Method Reporting Limit
- Q RPD >40% between primary and confirmation columns

- * I Recoveries affected by interferences or high background
- DF Dilution Factor
- H Prepped / Analyzed out of holding time.
- M Minimum value
- MQL Method Quantitation Limit (adjusted)
- N Refer to attached Non-Compliance Report
- SQL Sample Quantitation Limit (adjusted MDL)

09/04/08 38 AURORA_ACC



AccuLab Inc.

Environmental & Analytical Testing Services

5041 Taravella Road - Marrero, LA 70072 - 504-371-8557 - Fax 504-371-8560
www.acculabnola.com

Quality Control Summary Report

The following QC parameters, where applicable, were evaluated for samples associated with this report:

Method Blank (s)	QC Pass All method blank(s) associated with this project met all laboratory and method quality control requirements unless otherwise noted. Any exceptions are noted on this summary report.

Laboratory Control Sample (s)	QC Pass All laboratory control sample(s) associated with this project met all laboratory and method quality control requirements unless otherwise noted. Any exceptions are noted on this summary report.

Duplicate (s)	QC Pass All duplicate(s) samples associated with this project met all laboratory and method quality control requirements unless otherwise noted. Any exceptions are noted on this summary report.

Matrix Spike/Matrix Spike Duplicate (s)	QC Pass All matrix spike/matrix spike duplicate(s) samples associated with this project met all laboratory and method quality control requirements unless otherwise noted. Any exceptions are noted on this summary report.



AccuLab Inc.

Environmental & Analytical Testing Services

5041 Taravella Road - Marrero, LA 70072 - 504-371-8557 - Fax 504-371-8560
www.acculabnola.com

Cooler Receipt Form

Customer Number: **00038**

Customer Name: **Aurora Environmental**

08-235-0220

Report Number: **08-235-0220**

Shipping Method

FedEx UPS US Postal Client LMP Courier Other:

Shipping container/cooler uncompromised?	<input checked="" type="radio"/> Yes	<input type="radio"/> No	<input type="radio"/> Not Present
Custody seals intact on shipping container/cooler?	<input type="radio"/> Yes	<input type="radio"/> No	<input checked="" type="radio"/> Not Required
Custody seals intact on sample bottles?	<input type="radio"/> Yes	<input type="radio"/> No	<input checked="" type="radio"/> Not Required
Chain of Custody present?	<input checked="" type="radio"/> Yes	<input type="radio"/> No	
COC agrees with sample labels?	<input checked="" type="radio"/> Yes	<input type="radio"/> No	
Samples in proper containers?	<input checked="" type="radio"/> Yes	<input type="radio"/> No	
Sample containers intact?	<input checked="" type="radio"/> Yes	<input type="radio"/> No	
Sufficient sample volume for indicated tests?	<input checked="" type="radio"/> Yes	<input type="radio"/> No	
All samples received within holding time?	<input checked="" type="radio"/> Yes	<input type="radio"/> No	
Container temperature in compliance?	<input checked="" type="radio"/> Yes	<input type="radio"/> No	
Water - VOA vials free of headspace?	<input checked="" type="radio"/> Yes	<input type="radio"/> No	<input type="radio"/> N/A
Water - Preservation acceptable upon receipt?	<input checked="" type="radio"/> Yes	<input type="radio"/> No	<input type="radio"/> N/A
Samples screened for radioactivity (COE only)?	<input type="radio"/> Yes	<input type="radio"/> No	<input checked="" type="radio"/> N/A
Special precautions or instructions included?	<input type="radio"/> Yes	<input checked="" type="radio"/> No	

Comments:

Any regulatory non-compliance issues will be recorded on non-compliance report.

Signature: Shelly Easley

Date & Time: 08-22-2008 12:40



5041 Taravella Road
Marrero, LA 70072
Phone (504) 371-8557
Fax (504) 371-8560
acculab@acculabnola.com

Chain of Custody Record
Client

Aurora Env.



Aurora Environmental
129 Acree Nine Mile Pl.

08-235-0220
00038
Aug 22 2008
12:46PM

City
Pho

Fun. #

P.O. #

Project/Site Name <i>129 Acree Nine Mile Pl</i>	Sampler's Name <i>Brian N. A.</i>	Due Date <i>Normal</i>
--	--------------------------------------	---------------------------

Matrix: P = Potable Water W = Water/Wastewater S = Soil Sl = Sludge
O = Oil G = Glycol PC = Paint Chips Ot = Other (describe in remarks)
Preservatives: A = Cool, 4°C B = Cool, 4°C, Sulfuric Acid to pH <2
C = Cool, 4°C, Nitric Acid to pH <2 D = Other (describe in remarks)
E = Cool, 4°C, Sodium Thiosulfate F = Cool, 4°C, HCl to pH <2
Sample Containers Used: BOD, TSS, CN - 950 ml Plastic Oil & Grease,
Phenol - 1 L Glass w/TLC TOC - 4 oz. Glass COD - 250 ml Plastic Metals -
250 ml Plastic VOA - 40 ml Glass Vial w/TLS SVOA, Pesticides - 1250 ml
Amber Glass w/TLC

Testing Required & Preservative

AccuLab #	Date	Time	Grab	Comp	Sample Location	M	#	C	ACRA metals	TPH-DRO	TPH-ORO	BTEX	TPH-GAO
94999	8-21-08	1039	✓		W-1	W	6	✓	✓	✓	✓	✓	✓
95000	8-21-08	1105	✓		W-2	W	6	✓	✓	✓	✓	✓	✓
95001	8-21-08	1130	✓		W-3	W	6	✓	✓	✓	✓	✓	✓
95002	8-21-08	1210	✓		W-4	W	6	✓	✓	✓	✓	✓	✓
95003	8-21-08	1345	✓		W-5	W	6	✓	✓	✓	✓	✓	✓
95004	8-21-08	1339	✓		W-6	W	6	✓	✓	✓	✓	✓	✓
95005	8-21-08	1423	✓		W-7	W	6	✓	✓	✓	✓	✓	✓

Remarks:

Relinquished by (Signature) <i>[Signature]</i>	Date/Time 8-22-08 1240	Received By (Signature) <i>[Signature]</i>
Relinquished by (Signature)	Date/Time	Received By (Signature)
Relinquished by (Signature)	Date/Time 8-22-08 1240	Received for Lab By (Signature) <i>S. Pasley</i>
Relinquished by (Signature)	Date/Time	Received By (Signature)
Samples on ice when received at lab? <input checked="" type="checkbox"/> YES <input type="checkbox"/> NO		

Rev. 05/23/00 Replaces Rev. 06/29/99



AccuLab Inc.

Environmental & Analytical Testing Services

5041 Taravella Road - Marrero, LA 70072 - 504-371-8557 - Fax 504-371-8560
www.acculabnola.com

9/8/2008

Aurora Environmental
Mr. Bernie Hebert
P.O. Box 306
Gretna, LA, 70054-0306

Ref: Analytical Testing
Report Number: 08-235-0221
Project Description: 129 Acre Nine Mile Pt.

Dear Mr. Bernie Hebert:

Acculab, Inc. received 3 sample(s) on 8/22/2008 for the analyses presented in the following report.

The above referenced project has been analyzed per your instructions. Unless otherwise noted, the analyses were performed in our laboratory in accordance with Standard Methods, The Solid Waste Manual SW-846, EPA Methods for Chemical Analysis of Water and Wastes and /or 40 CFR part 136.

The EPA requires that water samples analyzed for pH, dissolved oxygen and total residual chlorine be analyzed in the field. Analyses reported which indicate "Field" for these parameters was analyzed by the client in the field. Results for solid samples are reported on an as received basis unless otherwise specified.

The analytical data has been validated using standard quality control measures performed as required by the analytical method. Quality Assurance, instrumentation maintenance and calibration were performed in accordance with guidelines established by the USEPA.

All quality control measures undertaken in accordance with Acculab, Inc. CompQAP990807A and revisions under the terms of the Louisiana Environmental Laboratory Accreditation Program (Certificate #02041) are within acceptance ranges established that document with the exception of the items indicated and discussed on the QC Summary Report. Sample analyzed by ETC in Memphis, TN (04015).

The results are shown on the attached analysis sheet(s). Thank you for allowing Acculab, Inc. to serve you. Should I be of further assistance, if you have any questions or need additional information please do not hesitate to contact me or client services.

Sincerely,

Anthony J. Albert
Laboratory Director



AccuLab Inc.

Environmental & Analytical Testing Services

5041 Taravella Road - Marrero, LA 70072 - 504-371-8557 - Fax 504-371-8560
www.acculabnola.com

00038

Aurora Environmental
Mr. Bernie Hebert
P.O. Box 306
Gretna , LA 70054-0306

Project ID :
Description : 129 Acre Nine Mile Pt.

Report Date : 9/8/2008

Report Number : **08-235-0221**

REPORT OF ANALYSIS

Received : 8/22/2008

Lab No : **95008**

Matrix: **Aqueous**

Sample ID : **W-10**

Sampled: **8/22/2008 12:04**

Test	Results	Units	MQL	Date / Time Analyzed	By	Analytical Method
Total Chromium	0.277	mg/L	0.01	09/03/08 07:19	JTR	EPA-200.7
Total Arsenic	0.104	mg/L	0.02	09/03/08 07:19	JTR	EPA-200.7
Total Silver	<0.01	mg/L	0.01	09/03/08 07:19	JTR	EPA-200.7
Total Cadmium	0.022	mg/L	0.004	09/03/08 07:19	JTR	EPA-200.7
Total Barium	4.43	mg/L	0.02	09/03/08 07:19	JTR	EPA-200.7
Total Mercury	0.0003	mg/L	0.0002	08/29/08 09:51	SH	EPA-245.1
Total Selenium	<0.02	mg/L	0.02	09/03/08 07:19	JTR	EPA-200.7
Total Lead	0.517	mg/L	0.012	09/03/08 07:19	JTR	EPA-200.7

Qualifiers/ Definitions

*	Outside QC limit	B	Analyte detected in blank
C	GCMS Confirmation Analysis	E	Exceeds calibration range
g	GGA outside QC limits	H	Beyond holding time
J	Estimated Value	M	Minimum value
NC	Not confirmed	Q	Surrogate Recovery
T	Sample exhibits toxicity	U	Unconfirmed



AccuLab Inc.

Environmental & Analytical Testing Services

5041 Taravelle Road - Marrero, LA 70072 - 504-371-8557 - Fax 504-371-8580
www.acculabinc.com

Aurora Environmental
P.O. Box 306
Gretna, LA 70054-0306

Project **129 Acre Nine Mile Pt.**
Description

Lab Order Number **08-235-0221**
Lab ID **0808433-001A**
Field ID **W-8**
Sample Number **95006**

Report of Analysis

Received **08/26/08**
Matrix **Aqueous**
Sampled **08/22/08 9:15**

Analytical Method 8015B

Prep Method	5030B	Prep Batch(s)	21659	Date/Time Prepped	09/04/08 9:44		
Compound	Result	Units	MLQ	DF	Date/Time Analyzed	By	Analytical Batch
TPH-GRO (C6-C10)	< 0.100	mg/L	0.100	1	09/04/08 12:00	PH	35685
Surrogate: 4-Bromofluorobenzene		106 %	Limits: 80-120	1	09/04/08 12:00	PH	35685
Surrogate: 4-Bromochlorobenzene		96 %	Limits: 80-120	1	09/04/08 12:00	PH	35685

Qualifiers/Definitions			
*	Surrogate Recovery outside accepted limits	* I	Recoveries affected by interferences or high background
B	Analyte detected in the associated Method Blank	DF	Dilution Factor
E	Value exceeds method calibration range	H	Prepped / Analyzed out of holding time.
J	Estimated Value Analyte below reported detection limit	M	Minimum value
MDL	Method Dection Limit (unadjusted)	MQL	Method Quantitation Limit (adjusted)
MRL	Method Reporting Limit	N	Refer to attached Non-Compliance Report
Q	RPD >40% between primary and confirmation columns	SQL	Sample Quantitation Limit (adjusted MDL)

09/08/08 38 AURORA_ACC



AccuLab Inc.

Environmental & Analytical Testing Services

5041 Taravello Road - Marrero, LA 70072 - 504-371-8557 - Fax 504-371-8560
www.acculabnola.com

Aurora Environmental
P.O. Box 306
Gretna, LA 70054-0306

Project **129 Acre Nine Mile Pt.**
Description

Lab Order Number **08-235-0221**
Lab ID **0808433-001A**
Field ID **W-8**
Sample Number **95006**

Report of Analysis

Received **08/26/08**
Matrix **Aqueous**
Sampled **08/22/08 9:15**

Analytical Method 624

Prep Method	624	Prep Batch(s)	21596	Date/Time Prepped	08/28/08 11:33		
Compound	Result	Units	ML	DF	Date/Time Analyzed	By	Analytical Batch
Benzene	< 1.00	µg/L	1.00	1	08/28/08 22:05	VS	35581
Ethylbenzene	< 1.00	µg/L	1.00	1	08/28/08 22:05	VS	35581
Toluene	< 5.00	µg/L	5.00	1	08/28/08 22:05	VS	35581
m,p-Xylene	2.05	µg/L	2.00	1	08/28/08 22:05	VS	35581
o-Xylene	< 1.00	µg/L	1.00	1	08/28/08 22:05	VS	35581
Surrogate: Dibromofluoromethane		91 %	Limits: 75-125	1	08/28/08 22:05	VS	35581
Surrogate: Toluene-d8		96 %	Limits: 85-120	1	08/28/08 22:05	VS	35581
Surrogate: 4-Bromofluorobenzene		91 %	Limits: 85-118	1	08/28/08 22:05	VS	35581
Surrogate: 1,2-Dichloroethane-d4		108 %	Limits: 72-132	1	08/28/08 22:05	VS	35581

Qualifiers/Definitions				
*	Surrogate Recovery outside accepted limits	* I	Recoveries affected by interferences or high background	
B	Analyte detected in the associated Method Blank	DF	Dilution Factor	
E	Value exceeds method calibration range	H	Prepped / Analyzed out of holding time.	
J	Estimated Value Analyte below reported detection limit	M	Minimum value	
MDL	Method Detection Limit (unadjusted)	MQL	Method Quantitation Limit (adjusted)	
MRL	Method Reporting Limit	N	Refer to attached Non-Compliance Report	
Q	RPD >40% between primary and confirmation columns	SQL	Sample Quantitation Limit (adjusted MDL)	
09/08/08	38 AURORA_ACC			



AccuLab Inc.

Environmental & Analytical Testing Services

5041 Taravello Road - Marrero, LA 70072 - 504-371-8557 - Fax 504-371-8580
www.acculabnoia.com

Aurora Environmental
P.O. Box 306
Gretna, LA 70054-0306

Project **129 Acre Nine Mile Pt.**
Description

Lab Order Number **08-235-0221**
Lab ID **0808433-001B**
Field ID **W-8**
Sample Number **95006**

Report of Analysis

Received **08/26/08**
Matrix **Aqueous**
Sampled **08/22/08 9:15**

Analytical Method 8015B

Prep Method	3510C	Prep Batch(s)	21556	Date/Time Prepped	08/27/08 11:26		
Compound	Result	Units	MQL	DF	Date/Time Analyzed	By	Analytical Batch
TPH-DRO (C10-C28)	< 0.0918	mg/L	0.0918	1	08/28/08 13:10	KS	35573
TPH-ORO (>C28-C40)	< 0.0918	mg/L	0.0918	1	08/28/08 13:10	KS	35573
Surrogate: o-Terphenyl		85 %	Limits: 50-150	1	08/28/08 13:10	KS	35573

Qualifiers/ Definitions	* Surrogate Recovery outside accepted limits	* I Recoveries affected by interferences or high background
	B Analyte detected in the associated Method Blank	DF Dilution Factor
	E Value exceeds method calibration range	H Prepped / Analyzed out of holding time.
	J Estimated Value Analyte below reported detection limit	M Minimum value
	MDL Method Detection Limit (unadjusted)	MQL Method Quantitation Limit (adjusted)
	MRL Method Reporting Limit	N Refer to attached Non-Compliance Report
	Q RPD >40% between primary and confirmation columns	SQL Sample Quantitation Limit (adjusted MDL)

09/08/08 38 AURORA_ACC



AccuLab Inc.

Environmental & Analytical Testing Services

5041 Taravello Road - Marrero, LA 70072 - 504-371-8557 - Fax 504-371-8560
www.acculabnola.com

Aurora Environmental

P.O. Box 306
Gretna, LA 70054-0306

Project 129 Acre Nine Mile Pt.
Description

Lab Order Number 08-235-0221
Lab ID 0808433-002A
Field ID W-9
Sample Number 95007

Report of Analysis

Received 08/26/08
Matrix Aqueous
Sampled 08/22/08 10:26

Analytical Method 8015B

Prep Method	5030B	Prep Batch(s)	21659	Date/Time Prepped	09/04/08 9:44		
Compound	Result	Units	MQL	DF	Date/Time Analyzed	By	Analytical Batch
TPH-GRO (C6-C10)	< 0.100	mg/L	0.100	1	09/04/08 12:29	PH	35685
Surrogate: 4-Bromofluorobenzene		105 %	Limits: 80-120	1	09/04/08 12:29	PH	35685
Surrogate: 4-Bromochlorobenzene		97 %	Limits: 80-120	1	09/04/08 12:29	PH	35685

Qualifiers/ Definitions			
*	Surrogate Recovery outside accepted limits	* I	Recoveries affected by interferences or high background
B	Analyte detected in the associated Method Blank	DF	Dilution Factor
E	Value exceeds method calibration range	H	Prepped / Analyzed out of holding time.
J	Estimated Value Analyte below reported detection limit	M	Minimum value
MDL	Method Detection Limit (unadjusted)	MQL	Method Quantitation Limit (adjusted)
MRL	Method Reporting Limit	N	Refer to attached Non-Compliance Report
Q	RPD >40% between primary and confirmation columns	SQL	Sample Quantitation Limit (adjusted MDL)

09/08/08 38 AURORA_ACC



AccuLab Inc.

Environmental & Analytical Testing Services

5041 Taravello Road • Marrero, LA 70072 • 504-371-8537 • Fax 504-371-8588
www.acculabnoia.com

Aurora Environmental
P.O. Box 306
Gretna, LA 70054-0306

Project **129 Acre Nine Mile Pt.**
Description

Lab Order Number **08-235-0221**
Lab ID **0808433-002A**
Field ID **W-9**
Sample Number **95007**

Report of Analysis

Received **08/26/08**
Matrix **Aqueous**
Sampled **08/22/08 10:26**

Analytical Method 624

Prep Method	624	Prep Batch(s)	21614	Date/Time Prepped	08/30/08 12:08		
Compound	Result	Units	MQL	DF	Date/Time Analyzed	By	Analytical Batch
Benzene	< 1.00	µg/L	1.00	1	08/30/08 15:13	LS	35624
Ethylbenzene	< 1.00	µg/L	1.00	1	08/30/08 15:13	LS	35624
Toluene	< 5.00	µg/L	5.00	1	08/30/08 15:13	LS	35624
m,p-Xylene	< 2.00	µg/L	2.00	1	08/30/08 15:13	LS	35624
o-Xylene	< 1.00	µg/L	1.00	1	08/30/08 15:13	LS	35624
Surrogate: Dibromofluoromethane		118 %	Limits: 75-125	1	08/30/08 15:13	LS	35624
Surrogate: Toluene-d8		110 %	Limits: 85-120	1	08/30/08 15:13	LS	35624
Surrogate: 4-Bromofluorobenzene		108 %	Limits: 85-118	1	08/30/08 15:13	LS	35624
Surrogate: 1,2-Dichloroethane-d4		121 %	Limits: 72-132	1	08/30/08 15:13	LS	35624

Qualifiers/Definitions			
*	Surrogate Recovery outside accepted limits	* I	Recoveries affected by interferences or high background
B	Analyte detected in the associated Method Blank	DF	Dilution Factor
E	Value exceeds method calibration range	H	Prepped / Analyzed out of holding time.
J	Estimated Value Analyte below reported detection limit	M	Minimum value
MDL	Method Dection Limit (unadjusted)	MQL	Method Quantitation Limit (adjusted)
MRL	Method Reporting Limit	N	Refer to attached Non-Compliance Report
Q	RPD >40% between primary and confirmation columns	SQL	Sample Quantitation Limit (adjusted MDL)
09/08/08	38 AURORA_ACC		



AccuLab Inc.

Environmental & Analytical Testing Services

3041 Taravello Road - Marrero, LA 70072 - 504-371-8557 - Fax 504-371-8560
www.acculabnola.com

Aurora Environmental

P.O. Box 306

Gretna, LA 70054-0306

Project 129 Acre Nine Mile Pt.

Description

Lab Order Number 08-235-0221

Lab ID 0808433-002B

Field ID W-9

Sample Number 95007

Report of Analysis

Received 08/26/08

Matrix Aqueous

Sampled 08/22/08 10:26

Analytical Method 8015B

Prep Method 3510C

Prep Batch(s) 21556

Date/Time Prepped 08/27/08 11:26

Compound	Result	Units	MQL	DF	Date/Time Analyzed	By	Analytical Batch
TPH-DRO (C10-C28)	< 0.106	mg/L	0.106	1	08/28/08 13:30	KS	35573
TPH-ORO (>C28-C40)	< 0.106	mg/L	0.106	1	08/28/08 13:30	KS	35573
Surrogate: o-Terphenyl		78 %	Limits: 50-150	1	08/28/08 13:30	KS	35573

Qualifiers/ Definitions

* Surrogate Recovery outside accepted limits
 B Analyte detected in the associated Method Blank
 E Value exceeds method calibration range
 J Estimated Value Analyte below reported detection limit
 MDL Method Detection Limit (unadjusted)
 MRL Method Reporting Limit
 Q RPD >40% between primary and confirmation columns

* I Recoveries affected by interferences or high background
 DF Dilution Factor
 H Prepped / Analyzed out of holding time.
 M Minimum value
 MQL Method Quantitation Limit (adjusted)
 N Refer to attached Non-Compliance Report
 SQL Sample Quantitation Limit (adjusted MDL)

09/08/08 38 AURORA_ACC



AccuLab Inc.

Environmental & Analytical Testing Services

3041 Taravello Road - Marrero, LA 70072 • 504-371-8557 • Fax 504-371-8560
www.acculabnola.com

Aurora Environmental

P.O. Box 306
Gretna, LA 70054-0306

Project 129 Acre Nine Mile Pt.
Description

Lab Order Number 08-235-0221
Lab ID 0808433-003A
Field ID W-10
Sample Number 95008

Report of Analysis

Received 08/26/08
Matrix Aqueous
Sampled 08/22/08 12:04

Analytical Method 8015B

Prep Method	5030B	Prep Batch(s)	21659	Date/Time Prepped	09/04/08 9:44		
Compound	Result	Units	MQL	DF	Date/Time Analyzed	By	Analytical Batch
TPH-GRO (C6-C10)	< 0.100	mg/L	0.100	1	09/04/08 13:09	PH	35685
Surrogate: 4-Bromofluorobenzene		99 %	Limits: 80-120	1	09/04/08 13:09	PH	35685
Surrogate: 4-Bromochlorobenzene		91 %	Limits: 80-120	1	09/04/08 13:09	PH	35685

Qualifiers/Definitions			
*	Surrogate Recovery outside accepted limits	*I	Recoveries affected by interferences or high background
B	Analyte detected in the associated Method Blank	DF	Dilution Factor
E	Value exceeds method calibration range	H	Prepped / Analyzed out of holding time.
J	Estimated Value Analyte below reported detection limit	M	Minimum value
MDL	Method Detection Limit (unadjusted)	MQL	Method Quantitation Limit (adjusted)
MRL	Method Reporting Limit	N	Refer to attached Non-Compliance Report
Q	RPD >40% between primary and confirmation columns	SQL	Sample Quantitation Limit (adjusted MDL)
09/08/08	38 AURORA_ACC		



AccuLab Inc.

Environmental & Analytical Testing Services

5041 Taravelle Road - Marrero, LA 70072 • 504-371-8557 • Fax 504-371-8560
www.acculabnola.com

Aurora Environmental
P.O. Box 306
Gretna, LA 70054-0306

Project **129 Acre Nine Mile Pt.**
Description

Lab Order Number **08-235-0221**
Lab ID **0808433-003A**
Field ID **W-10**
Sample Number **95008**

Report of Analysis

Received **08/26/08**
Matrix **Aqueous**
Sampled **08/22/08 12:04**

Analytical Method 624

Prep Method	624	Prep Batch(s)	21614	Date/Time Prepped	08/30/08 12:08		
Compound	Result	Units	MQL	DF	Date/Time Analyzed	By	Analytical Batch
Benzene	< 1.00	µg/L	1.00	1	08/30/08 15:48	LS	35624
Ethylbenzene	< 1.00	µg/L	1.00	1	08/30/08 15:48	LS	35624
Toluene	< 5.00	µg/L	5.00	1	08/30/08 15:48	LS	35624
m,p-Xylene	< 2.00	µg/L	2.00	1	08/30/08 15:48	LS	35624
o-Xylene	< 1.00	µg/L	1.00	1	08/30/08 15:48	LS	35624
Surrogate: Dibromofluoromethane	117 %		Limits: 75-125	1	08/30/08 15:48	LS	35624
Surrogate: Toluene-d8	105 %		Limits: 85-120	1	08/30/08 15:48	LS	35624
Surrogate: 4-Bromofluorobenzene	110 %		Limits: 85-118	1	08/30/08 15:48	LS	35624
Surrogate: 1,2-Dichloroethane-d4	126 %		Limits: 72-132	1	08/30/08 15:48	LS	35624

Qualifiers/Definitions	* Surrogate Recovery outside accepted limits	* I Recoveries affected by interferences or high background
B	Analyte detected in the associated Method Blank	DF Dilution Factor
E	Value exceeds method calibration range	H Prepped / Analyzed out of holding time.
J	Estimated Value Analyte below reported detection limit	M Minimum value
MDL	Method Detection Limit (unadjusted)	MQL Method Quantitation Limit (adjusted)
MRL	Method Reporting Limit	N Refer to attached Non-Compliance Report
Q	RPD >40% between primary and confirmation columns	SQL Sample Quantitation Limit (adjusted MDL)

09/08/08 38 AURORA_ACC



AccuLab Inc.

Environmental & Analytical Testing Services

3041 Taravelle Road - Marrero, LA 70072 - 504-371-8557 - Fax 504-371-8560
www.acculabola.com

Aurora Environmental

P.O. Box 306
Gretna, LA 70054-0306

Project 129 Acre Nine Mile Pt.
Description

Lab Order Number 08-235-0221
Lab ID 0808433-003B
Field ID W-10
Sample Number 95008

Report of Analysis

Received 08/26/08
Matrix Aqueous
Sampled 08/22/08 12:04

Analytical Method 8015B

Prep Method	3510C	Prep Batch(s)	21556	Date/Time Prepped	08/27/08 11:26		
Compound	Result	Units	MQL	DF	Date/Time Analyzed	By	Analytical Batch
TPH-DRO (C10-C28)	0.231	mg/L	0.0938	1	08/28/08 13:50	KS	35573
TPH-ORO (>C28-C40)	0.265	mg/L	0.0938	1	08/28/08 13:50	KS	35573
Surrogate: o-Terphenyl		86 %	Limits: 50-150	1	08/28/08 13:50	KS	35573

Qualifiers/Definitions			
*	Surrogate Recovery outside accepted limits	* I	Recoveries affected by interferences or high background
B	Analyte detected in the associated Method Blank	DF	Dilution Factor
E	Value exceeds method calibration range	H	Prepped / Analyzed out of holding time.
J	Estimated Value Analyte below reported detection limit	M	Minimum value
MDL	Method Dection Limit (unadjusted)	MQL	Method Quantitation Limit (adjusted)
MRL	Method Reporting Limit	N	Refer to attached Non-Compliance Report
Q	RPD >40% between primary and confirmation columns	SQL	Sample Quantitation Limit (adjusted MDL)

09/08/08 38 AURORA_ACC



AccuLab Inc.

Environmental & Analytical Testing Services

5041 Taravella Road - Marrero, LA 70072 - 504-371-8557 - Fax 504-371-8560
www.acculabnoia.com

Quality Control Summary Report

The following QC parameters, where applicable, were evaluated for samples associated with this report:

Method Blank (s)	QC Pass All method blank(s) associated with this project met all laboratory and method quality control requirements unless otherwise noted. Any exceptions are noted on this summary report.

Laboratory Control Sample (s)	QC Pass All laboratory control sample(s) associated with this project met all laboratory and method quality control requirements unless otherwise noted. Any exceptions are noted on this summary report.

Duplicate (s)	QC Pass All duplicate(s) samples associated with this project met all laboratory and method quality control requirements unless otherwise noted. Any exceptions are noted on this summary report.

Matrix Spike/Matrix Spike Duplicate (s)	QC Pass All matrix spike/matrix spike duplicate(s) samples associated with this project met all laboratory and method quality control requirements unless otherwise noted. Any exceptions are noted on this summary report.



AccuLab Inc.

Environmental & Analytical Testing Services

5041 Taravella Road - Marrero, LA 70072 - 504-371-8557 - Fax 504-371-8560
www.acculabnola.com

Cooler Receipt Form

Customer Number: **00038**

Customer Name: **Aurora Environmental**

08-235-0221

Report Number: **08-235-0221**

Shipping Method

FedEx UPS US Postal Client LMP Courier Other:

Shipping container/cooler uncompromised?	<input checked="" type="radio"/> Yes	<input type="radio"/> No	<input type="radio"/> Not Present
Custody seals intact on shipping container/cooler?	<input type="radio"/> Yes	<input type="radio"/> No	<input checked="" type="radio"/> Not Required
Custody seals intact on sample bottles?	<input type="radio"/> Yes	<input type="radio"/> No	<input checked="" type="radio"/> Not Required
Chain of Custody present?	<input checked="" type="radio"/> Yes	<input type="radio"/> No	
COC agrees with sample labels?	<input checked="" type="radio"/> Yes	<input type="radio"/> No	
Samples in proper containers?	<input checked="" type="radio"/> Yes	<input type="radio"/> No	
Sample containers intact?	<input checked="" type="radio"/> Yes	<input type="radio"/> No	
Sufficient sample volume for indicated tests?	<input checked="" type="radio"/> Yes	<input type="radio"/> No	
All samples received within holding time?	<input checked="" type="radio"/> Yes	<input type="radio"/> No	
Container temperature in compliance?	<input checked="" type="radio"/> Yes	<input type="radio"/> No	
Water - VOA vials free of headspace?	<input checked="" type="radio"/> Yes	<input type="radio"/> No	<input type="radio"/> N/A
Water - Preservation acceptable upon receipt?	<input checked="" type="radio"/> Yes	<input type="radio"/> No	<input type="radio"/> N/A
Samples screened for radioactivity (COE only)?	<input type="radio"/> Yes	<input type="radio"/> No	<input checked="" type="radio"/> N/A
Special precautions or instructions included?	<input type="radio"/> Yes	<input checked="" type="radio"/> No	

Comments:

Any regulatory non-compliance issues will be recorded on non-compliance report.

Signature: Shelly Easley

Date & Time: 08-22-2008 12:40



5041 Taravelle Road
Marrero, LA 70072
Phone (504) 371-8557
Fax (504) 371-8560
acculab@acculabnola.com

Chain of Custody Record
Client Aurora



Aurora Environmental
129 Acre Nine Mile Pt.

08-235-0221
00038
Aug 22 2008
12:50PM

City,
Phone
Fax

P.O. #

Project/Site Name <u>129 Acre Nine Mile Pt.</u>	Sampler's Name <u>Brian Hallett</u>	Due Date <u>Normal</u>
--	--	---------------------------

Matrix						Testing Required & Preservative				
AccuLab #	Date	Time	Grab	Comp	Sample Location	RCRA metals	TPH-PRO	TPH-ORO	BTEX	TPH-GRO
95006	8-22-08	0915	✓		W-8	✓	✓	✓	✓	✓
95007	8-22-08	1026	✓		W-9	✓	✓	✓	✓	✓
95008	8-22-08	1204	✓		W-10	✓	✓	✓	✓	✓

Remarks:

Relinquished by (Signature) <u>Brian Hallett</u>	Date/Time <u>8-22-08 1240</u>	Received By (Signature) <u>[Signature]</u>	<u>4.2°C</u>
Relinquished by (Signature)	Date/Time	Received By (Signature)	
Relinquished by (Signature)	Date/Time <u>8-22-08 1240</u>	Received for Lab By (Signature) <u>S. Poole</u>	
Relinquished by (Signature)	Date/Time	Received By (Signature)	

Rev. 05/23/00 Replaces Rev. 06/29/99

PHASE II ENVIRONMENTAL ASSESSMENT

**536 BRIDGE CITY AVENUE
BRIDGE CITY, LOUISIANA
PROJECT #6645**

**BY
ENVIRONMENTAL AUDITORS OF AMERICA, INC.
1112 Engineers Road, Suite 200
Belle Chasse, Louisiana 70037
(504) 391-1185/Fax: (504) 391-1193**

June 30, 2014

PHASE II ENVIRONMENTAL ASSESSMENT
536 BRIDGE CITY AVENUE
BRIDGE CITY, LOUISIANA
PROJECT #6645

BY
ENVIRONMENTAL AUDITORS OF AMERICA, INC.

June 30, 2014

<u>Section</u>		<u>Page</u>
1.0	Project Background	1
1.1	Scope of Work	1
1.2	Level of Investigative Effort.....	1
1.3	Time Frame.....	1
2.0	Soil Quantitative Findings	1
2.1	Sampling Methodology	1
2.2	Sample Locations	2
2.3	Sample Collection Observations.....	3
2.4	Testing Methodology.....	3
2.5	Analytical Results.....	4
3.0	Summary, Conclusions and Recommendations	5
3.1	Summary.....	5
3.2	Conclusions.....	5
3.3	Recommendations.....	6
	Appendix	
	A - Soil Sample Locations Map	
	B - Analytical Results/Chain of Custody	

1.0 PROJECT BACKGROUND

Environmental Auditors of America, Inc. (EAA) was retained by Mr. Jack Stumpf to investigate the subsurface integrity of the property located at 536 Bridge City Avenue in Bridge City, Louisiana within Jefferson Parish. The purpose of the project was to determine if the subsurface of the subject site has been adversely impacted by current or past activities at the subject property.

1.1 Scope of Work

The agreed upon scope of work for the project included:

- Install four (4) subsurface soil borings from selected locations at the project site. Convert the soil borings into temporary piezometers and extract groundwater.
- Analyze the samples extracted for Resource Conservation and Recovery Act (RCRA) Metals, Total Petroleum Hydrocarbons (TPH) quantified as Diesel (TPH-D) and Motor Oil (TPH-MO) through appropriate testing methodologies and report these results.

1.2 Level of Investigative Effort

The client was interested in the substantiation through test results of the condition of the subsurface soil integrity of the subject property. The project was conducted by Ms. Anna Strimas, Professional Geologist and Mr. Joe Simon, Environmental Professional.

1.3 Time Frame

The complete time frame from the date of the client's request to submitting the written report was approximately fifteen working days.

2.0 SOIL QUANTITATIVE FINDINGS

2.1 Sampling Methodology

EAA subcontracted Great Lakes Geotechnical Services, Inc., a Louisiana Department of Natural Resources (DNR) licensed drilling contractor, to install four Geoprobe soil borings on June 9, 2014. Subsurface Borings W-1 through W-4 were installed with a Geoprobe Sampling System.

The soil borings were drilled to a maximum of twelve feet below land surface. The borings were inspected continuously utilizing three foot plastic Geoprobe tubes. Bore holes were converted to temporary monitoring wells through the installation of slotted polyvinyl chloride (PVC) piping into the borehole. The well was allowed to stabilize then purged of three well volumes or until dry. The well was allowed to stabilize then sampled with new tubing in a peristaltic pump.

The samples were placed in clean laboratory supplied containers and labeled with the date, sample identification, time of extraction and type of analysis requested. The samples were preserved on ice and delivered to the testing laboratory after the completion of the sampling activities.

Between each boring location, the Geoprobe drilling equipment was decontaminated utilizing Alconox soap and flushed with deionized water. The bore holes were filled with bentonite to the ground surface and hydrated following completion of the soil sampling activities.

2.2 Sample Locations

Four subsurface soil borings were completed on site in locations with previously detected levels of total Resource Conservation and Recovery Act (RCRA) Metals or Total Petroleum Hydrocarbons (TPH). The borings were located along the western side of the project site. Boring W1 and W2 were located in the location of the former Diesel above ground storage tank, which was immediately north of a small red barn and approximately forty feet south of the horse stable on site. Borings W1 and W2 replace the Boring W-10 that was installed in 2008. Boring W3 was located approximately 2500 feet north of the horse stable and replaces the Boring W-6 that was installed in 2008. Boring W4 was located approximately 3000 feet north of the horse stable and replaces the Boring W-5 that was installed in 2008.

2.3 Sample Collection Observation

The lithologic descriptions of the subsurface soils observed during the sampling on site were similar. In general, grass and loosely compacted soil were observed from the ground surface to approximately one half of a foot below ground surface (BGS). Firm gray clay was observed from the one half foot to eight foot depth interval. Soft, wet, silty gray clay was encountered from eight to twelve foot BGS.

Initial groundwater was encountered at approximately eight feet below ground surface (BGS). No odors or visual indications of contamination were observed in the soil samples extracted for this project.

2.4 Testing Methodology

The samples were delivered to Environmental Analytical Solutions, Inc. (EASI) under chain of custody. The samples were analyzed for Total Petroleum Hydrocarbons quantified as Diesel (TPH-D) and Motor Oil (TPH-MO), as well as Resource Conservation and Recovery Act (RCRA) Metals.

Total Petroleum Hydrocarbon (TPH) scans were performed utilizing the *Test Methods for Evaluating Solid Wastes*, Physical Chemical Methods, USEPA, SW-846, utilizing Method Number 8015B.

Resource Conservation and Recovery Act (RCRA) Metal scans were performed utilizing the *Test Methods for Evaluating Solid Wastes*, Physical Chemical Methods, USEPA, SW-846, utilizing Method Number 6010 for Arsenic, Barium, Cadmium, Chromium, Lead, Selenium and Silver. Mercury scans utilized Method Number 7470.

2.5 Analytical Results

Analytical results revealed that all of the groundwater samples were below the quantitation limit (BQL) of detection for TPH-D and TPH-MO. The minimum detection limit for TPH-D and TPH-MO was 0.150 milligrams per liter (mg/L) in the analyses.

Analytical results revealed that RCRA Metals were detected in project site groundwater samples. Barium was detected in three of the project site samples. The highest level of detected Barium was 0.626 mg/L, which is well below the most restrictive Risk Evaluation and Corrective Action Program (RECAP) screening standard of 2.0 mg/L of Barium. Sample W4 had 0.0062 mg/L of Lead, which is below the most restrictive RECAP screening standard of 0.015 mg/L for Lead. No other samples had detectable levels of Lead. Sample W2 had 0.01 mg/L of Arsenic, which is right at the most restrictive RECAP screening standard of 0.01 mg/L for Arsenic. No other samples had detectable levels of Arsenic. The minimum detection limit for RCRA Metals was between 0.002 and 0.200 milligrams per liter (mg/l) in the analyses. The following table illustrates these analytical results:

Groundwater RCRA Metal Results (mg/L)					
ANALYTE	W1	W2	W3	W4	RECAP SS
Arsenic	<0.01	0.01	<0.01	<0.01	0.01
Barium	0.250	0.626	<0.200	0.274	2.0
Cadmium	<0.005	<0.005	<0.005	<0.005	0.005
Chromium	<0.010	<0.010	<0.010	<0.010	0.01
Lead	<0.005	<0.005	<0.005	0.0062	0.015
Selenium	<0.035	<0.035	<0.035	<0.035	0.05
Silver	<0.010	<0.010	<0.010	<0.010	0.018
Mercury	<0.002	<0.002	<0.002	<0.002	0.002

mg/l = milligrams per liter

BOLD = Analyte is above the RECAP SS

RCRA = Resource Conservation and Recovery Act

RECAP SS = Risk Evaluation and Corrective Action Program Most Restrictive Screening Standard

The analytical results and chain of custody can be found in Appendix B.

3.0 SUMMARY, CONCLUSIONS AND RECOMMENDATIONS

3.1 Summary

A Phase II Environmental Site Assessment was performed on the subject property. Four subsurface borings were completed. The borings were completed to a depth of twelve feet below ground surface (BGS). The initial soil/groundwater interface was encountered at approximately eight feet BGS. Temporary wells were installed in all of the soil boring locations and labeled as W1, W2, W3 and W4. Groundwater was purged and allowed recharge time prior to collecting groundwater samples.

All samples were analyzed for Total Petroleum Hydrocarbons quantified as Diesel (TPH-D) and Motor Oil (TPH-MO), as well as for Resource Conservation and Recovery Act (RCRA) Metals. Analytical results revealed that none of the four groundwater samples had concentrations above the minimum detection limit of 0.150 mg/L for TPH-D and TPH-MO. Results show that some low levels of Barium, Arsenic and Lead were detected in some project site samples. The low Barium and Lead levels are well below the most restrictive groundwater RECAP screening standards. Arsenic was detected at 0.01 mg/L in Sample W2, which is right at the RECAP screening standard of 0.01 mg/L for Arsenic. This on site Arsenic level is below the RECAP Management Option 1 (MO-1) Limiting Standard for nondrinking water (GW3NDW) limiting standard of 0.05 mg/L.

3.2 Conclusions

Analytical results of the samples extracted from the subject property during this investigation suggest that groundwater soils in these areas are not above the current Louisiana Department of Environmental Quality (DEQ) Risk Evaluation and Corrective Action Program (RECAP) screening standards for TPH-D, TPH-MO and all RCRA Metals. Arsenic detected in Sample W2 was 0.01 mg/L, which is right at the RECAP screening standard of 0.01 mg/L for Arsenic in groundwater. Arsenic is a naturally occurring mineral that is resultant of the erosion and degradation of bedrock.

Louisiana has high levels of Arsenic because of the depositional nature of the Mississippi River flood plain. It is extremely unlikely that the DEQ will require any further investigations at the subject property based on this low level of Arsenic that was detected in one of the project site samples.

3.3 Recommendations

It is the professional judgement of EAA that the following recommendations are considered to ensure the environmental integrity of the site and to become or remain in environmental compliance.

No further environmental subsurface inspection activities are recommended to be conducted at this time.

SIGNATURES OF ENVIRONMENTAL PROFESSIONALS

Services performed under this contract were conducted in a manner consistent with the level of care and skill ordinarily exercised by members of the profession currently practicing under similar conditions.

In preparing this report, Environmental Auditors of America, Inc. (EAA) has relied on information derived from secondary sources and personal interviews. Except as set forth in this report, EAA has made no independent investigation as to the accuracy or completeness of the information derived from the secondary sources and personal interviews and has assumed that such information was accurate and complete.

The undersigned declare that, to the best of our knowledge professional knowledge and belief, we meet the definition of Environmental Professional as defined in Section 312.10 of 40 CFR Part 312.

The undersigned have the specific qualifications based on education, training and experience to assess a property of the nature, history and setting of the subject property. We have developed and performed the all appropriate inquiries in conformance with the standards and practices set forth in 40 CFR Part 312.

This report prepared by and all data accumulated from all sources by:

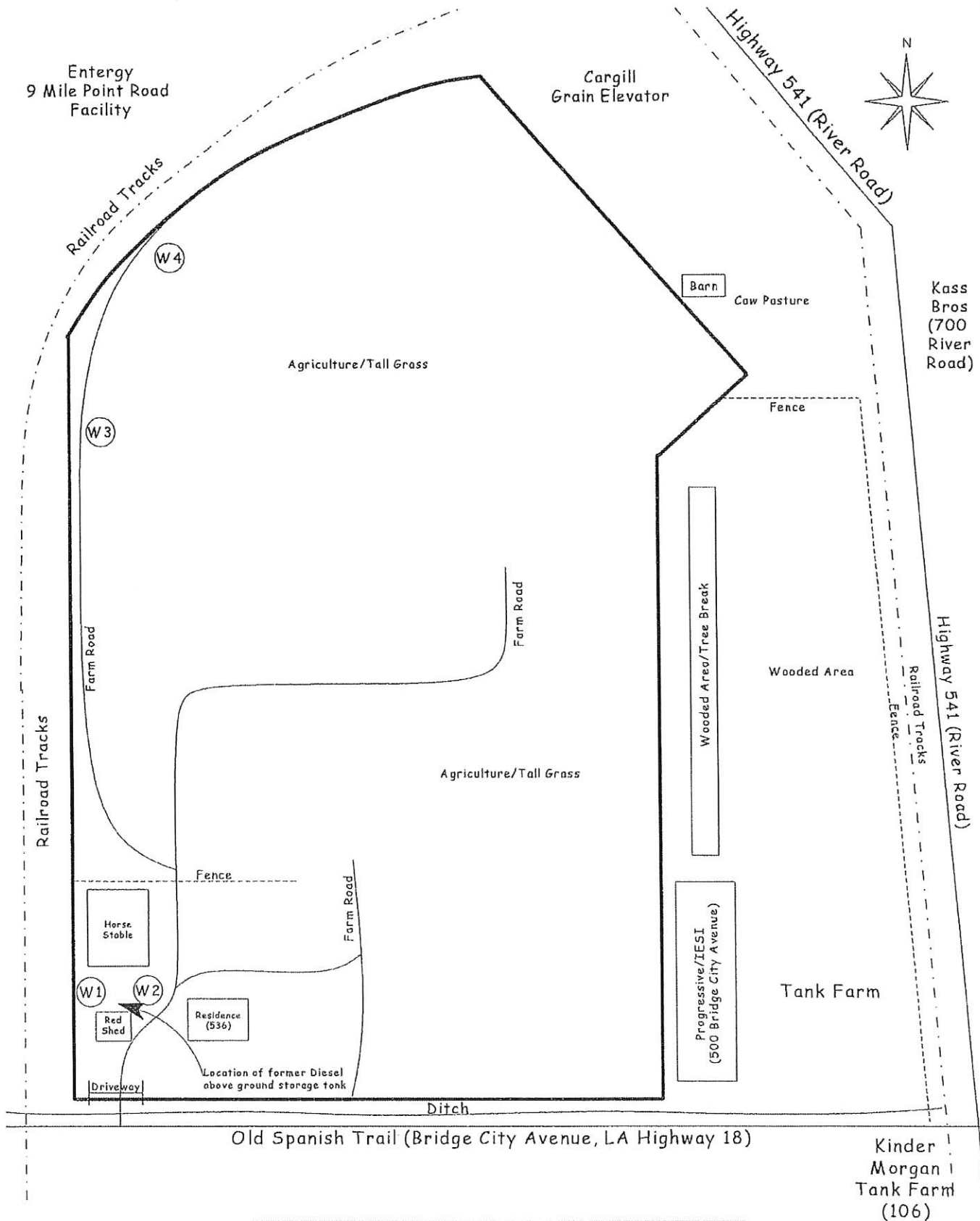


Joe Simon
President
Environmental Auditors of America, Inc.



Anna Strimas
Professional Geologist
Environmental Auditors of America, Inc.

APPENDIX A
SOIL SAMPLE LOCATIONS MAP



LEGEND

- = Project Site Boundary
- = Temporary Well Location

Sample Location Map NOT TO SCALE	Job #: 6645 Drawn by: A.S. Date: 6/13/2014	Site name: 114 Acre Tract Parcel A, Highway 18 Bridge City, Louisiana
-------------------------------------	--	---

APPENDIX B
ANALYTICAL RESULTS / CHAIN OF CUSTODY



EASI Job Number: 41606

Laboratory Report prepared for:

ENVIRONMENTAL AUDITORS OF AMERICA

1112 Engineers Road
Suite 200
Belle Chasse, LA 70037
Attention: Mr. Joe Simon

RE: Bridge City

Report Narrative

June 9, 2014 four (4) samples were received for analytical characterization as detailed on the attached chain of custody. Sample results are shown on the following pages. The quality assurance / quality control data are attached to the report. If you have any questions regarding this report, please contact me at your convenience.

APPROVED BY:

A handwritten signature in black ink, appearing to read "Mike Antoine", is written over a horizontal line.

Mike Antoine
Laboratory Director

DATE:

06/30/14

Total Number of Report Pages: 8

The results contained within this report relate only to the analyses conducted and to the samples received by the laboratory. The results also conform to current requirements of LAC 33:1, AIHA and NELAC unless noted. This report shall not be reproduced, except in full, without written approval of EASI, LLC. EASI, LLC New Orleans is accredited by the American Industrial Hygiene Association, AIHA Lab number 102300, and the Louisiana Department of Environmental Quality, LELAP Certificate number 02036.

NOTE: This report is intended only for the use of the individual to whom it is addressed and may contain information that is privileged and/or confidential. If this report was received via facsimile or e-mail and the reader is not the intended recipient or the employee responsible for delivering the report to the intended recipient, you are hereby notified that any dissemination, distribution, or copying of this document is strictly prohibited. If you received this in error, please contact EASI, LLC at (504)-469-3685.

2501 Lexington Avenue Kenner Louisiana 70062 504-469-3685

Laboratory Report

Sample Identification: W1
Sample Date: June 9, 2014
Sample Time: 1110
Laboratory Number: 4160601
Matrix: Aqueous

Total Metals	Analysis Result	Analysis Units	PQL	Analysis Date/Time/Analyst
Arsenic	BQL	mg/l	0.010	061814/1214/MB
Barium	0.250	mg/l	0.200	061814/1214/MB
Cadmium	BQL	mg/l	0.005	061814/1214/MB
Chromium	BQL	mg/l	0.010	061814/1214/MB
Lead	BQL	mg/l	0.005	061814/1214/MB
Selenium	BQL	mg/l	0.035	061814/1214/MB
Silver	BQL	mg/l	0.010	061814/1214/MB
Mercury	BQL	mg/l	0.00200	062714/1145/MB

Total Petroleum Hydrocarbons	Analysis Result	Analysis Units	PQL	Analysis Date/Time/Analyst
TPH-DRO	BQL	mg/l	0.150	061714/1858/MA
TPH-ORO	BQL	mg/l	0.150	061714/1858/MA

Laboratory Report

Sample Identification: W2
 Sample Date: June 9, 2014
 Sample Time: 1130
 Laboratory Number: 4160602
 Matrix: Aqueous

Total Metals	Analysis Result	Analysis Units	PQL	Analysis Date/Time/Analyst
Arsenic	0.0106	mg/l	0.010	061814/1218/MB
Barium	0.626	mg/l	0.200	061814/1218/MB
Cadmium	BQL	mg/l	0.005	061814/1218/MB
Chromium	BQL	mg/l	0.010	061814/1218/MB
Lead	BQL	mg/l	0.005	061814/1218/MB
Selenium	BQL	mg/l	0.035	061814/1218/MB
Silver	BQL	mg/l	0.010	061814/1218/MB
Mercury	BQL	mg/l	0.00200	062714/1147/MB

Total Petroleum Hydrocarbons	Analysis Result	Analysis Units	PQL	Analysis Date/Time/Analyst
TPH-DRO	BQL	mg/l	0.150	061714/1939/MA
TPH-ORO	BQL	mg/l	0.150	061714/1939/MA

Laboratory Report

Sample Identification: W3
Sample Date: June 9, 2014
Sample Time: 1230
Laboratory Number: 4160603
Matrix: Aqueous

Total Metals	Analysis Result	Analysis Units	PQL	Analysis Date/Time/Analyst
Arsenic	BQL	mg/l	0.010	061814/1221/MB
Barium	BQL	mg/l	0.200	061814/1221/MB
Cadmium	BQL	mg/l	0.005	061814/1221/MB
Chromium	BQL	mg/l	0.010	061814/1221/MB
Lead	BQL	mg/l	0.005	061814/1221/MB
Selenium	BQL	mg/l	0.035	061814/1221/MB
Silver	BQL	mg/l	0.010	061814/1221/MB
Mercury	BQL	mg/l	0.00200	062714/1149/MB

Total Petroleum Hydrocarbons	Analysis Result	Analysis Units	PQL	Analysis Date/Time/Analyst
TPH-DRO	BQL	mg/l	0.150	061714/2021/MA
TPH-ORO	BQL	mg/l	0.150	061714/2021/MA

Laboratory Report

Sample Identification: W4
 Sample Date: June 9, 2014
 Sample Time: 1340
 Laboratory Number: 4160604
 Matrix: Aqueous

Total Metals	Analysis Result	Analysis Units	PQL	Analysis Date/Time/Analyst
Arsenic	BQL	mg/l	0.010	061814/1225/MB
Barium	0.274	mg/l	0.200	061814/1225/MB
Cadmium	BQL	mg/l	0.005	061814/1225/MB
Chromium	BQL	mg/l	0.010	061814/1225/MB
Lead	0.0062	mg/l	0.005	061814/1225/MB
Selenium	BQL	mg/l	0.035	061814/1225/MB
Silver	BQL	mg/l	0.010	061814/1225/MB
Mercury	BQL	mg/l	0.00200	062714/1151/MB

Total Petroleum Hydrocarbons	Analysis Result	Analysis Units	PQL	Analysis Date/Time/Analyst
TPH-DRO	BQL	mg/l	0.150	061714/2102/MA
TPH-ORO	BQL	mg/l	0.150	061714/2102/MA

Methodology

Job Number: 41606

Reference: Test Methods for Evaluating Solid Waste, Physical/Chemical Methods, USEPA, SW-846.

<u>Parameter</u>	<u>Method</u>
TPH-DRO	8015B
TPH-ORO	8015B
Arsenic*	6010
Barium*	6010
Cadmium*	6010
Chromium*	6010
Lead*	6010
Selenium*	6010
Silver*	6010
Mercury*	7470

* Subcontracted to Pace Analytical Services, Inc., LELAP Certification #02006

Quality Assurance/ Quality Control

Job Number: 41606

Parameter	QC Batch ID	Method Blank Result ppm	Spike Added ppm	LCS % Rec.
Arsenic	26065	BQL	1	104
Barium	26065	BQL	1	103
Cadmium	26065	BQL	1	105
Chromium	26065	BQL	1	104
Lead	26065	BQL	1	104
Selenium	26065	BQL	1	105
Silver	26065	BQL	1	105
Mercury	29799	BQL	1	93
Parameter	QC Batch ID	Method Blank Result ppm	Spike Added ppm	LCS % Rec.
TPH-DRO	061714	BQL	1.00	108

BQL-Below Quantitation Limit

CHAIN OF CUSTODY RECORD

EASI Job No. 41606	P.O. # 6645	EASI ENVIRONMENTAL ANALYTICAL SOLUTIONS, INC. 2501 Lexington Ave Kenner, Louisiana 70062 Phone: (504) 469-3685 Fax: (504) 469-0140							
Client Information: EAA Ref: Bridge City 6-9-14									
Lab I.D. (lab use only)	Sampled Date	Time	Customer Sample I.D.	No. of Cont.	Grab	Sample Matrix	Preservation	Analyses Requested	Comments
01	6-3-14	11:10	W1	3	X	Aqueous	A	TPH-D	Comments: Please add acidity after filtering.
02	6-9-14	11:30	W2	↓	↓	↓	A	TPH-MO	
03	↓	12:30	W3	↓	↓	↓	A	RCRA Metab	
04	↓	1:40	W4	↓	↓	↓	A	RCRA Metab	
Relinquished By: (Signature)		Date/Time		Received By: (Signature)		Comments			
<i>[Signature]</i>		6/9/14		<i>[Signature]</i>					
Relinquished By: (Signature)		Date/Time		Received By: (Signature)					
<i>[Signature]</i>				<i>[Signature]</i>					
Relinquished By: (Signature)		Date/Time		Received By: (Signature)					
<i>[Signature]</i>				<i>[Signature]</i>					
Sampler (s): Anna Strimas									