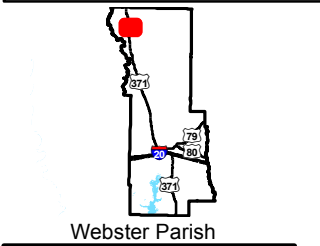
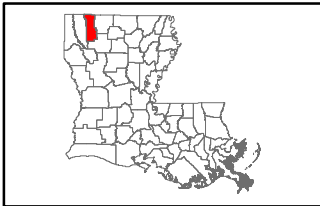


# Exhibit K. North Webster Parish Industrial District Site Electrical Transmission Infrastructure Map

Existing Electric Transmission  
NWPID Site  
Webster Parish, LA

NWPID



Legend

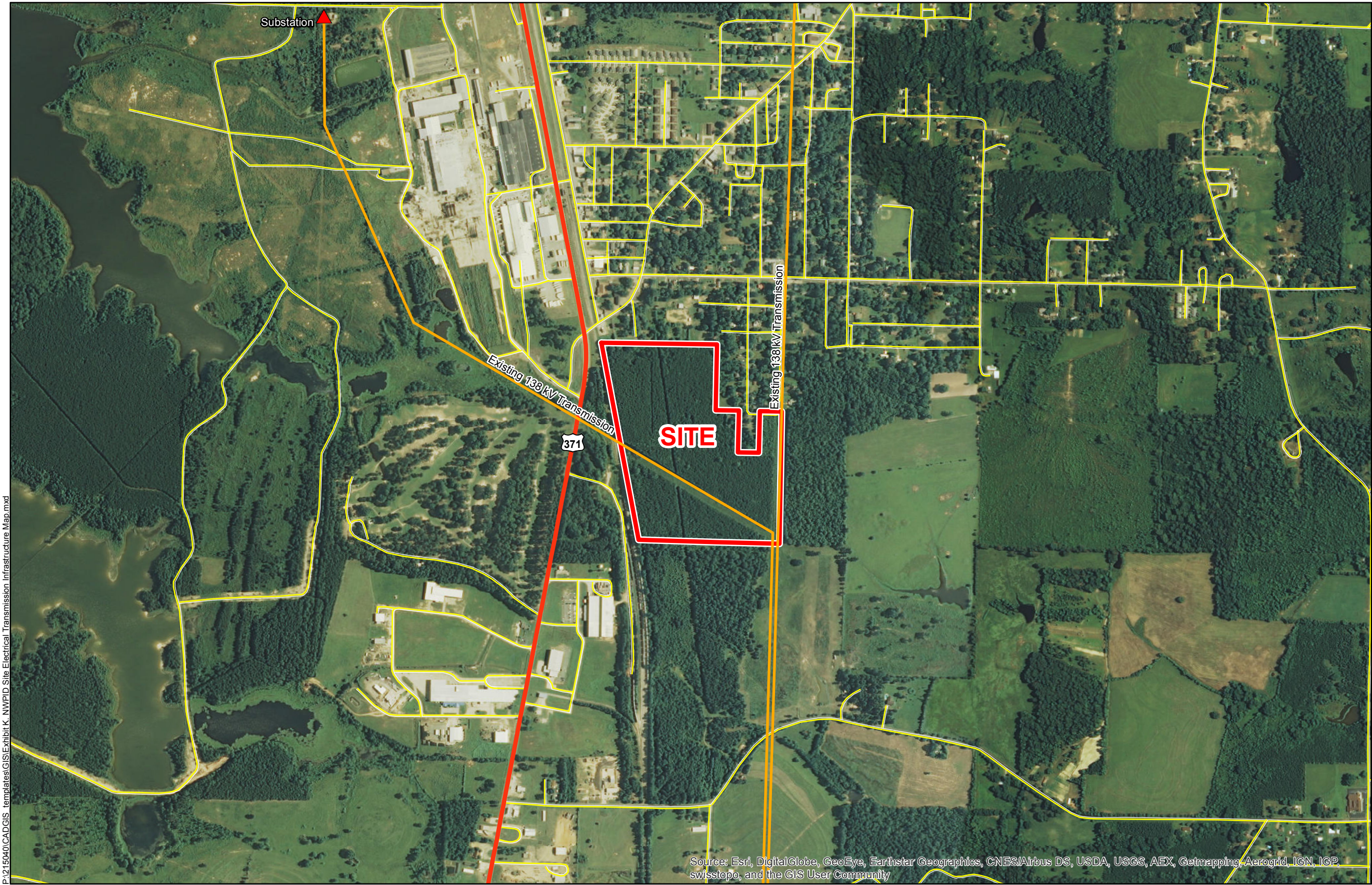
- Site Boundary (61.33 Acres +/-)
- Substation
- Existing Electric Transmission
  - 138 kV
- Existing Roadway
  - US Highway
  - Local Roads



NORTH WEBSTER PARISH  
INDUSTRIAL DISTRICT

Date:	10/6/2015
Project Number:	215040
Drawn By:	AMB
Checked By:	JAY

**CSRS**  
IMAGINE SHAPE DELIVER  
6767 Perkins Road Suite 200 Baton Rouge, LA 70808  
Telephone: 225 769-0546 Fax: 225 767-0060  
www.csrsonline.com



- General Notes:
1. No attempt has been made by CSRS, Inc. to verify site boundary, title, actual legal ownership, deed restrictions, servitudes, easements, or other burdens on the property, other than that furnished by the client or his representative.
  2. Transportation data from 2013 TIGER datasets via U.S. Census Bureau at <ftp://ftp2.census.gov/geo/tiger/TIGER2013>.
  3. Utility information from visual inspection and/or the individual utility operators. Exact field location has not been determined by survey. The lines shown are an approximate representation only and may have been offset for depiction purposes.



Scale 1:12,000  
0 640 1,280 Feet

P:\215040\CAD\GIS templates\GIS\Exhibit K. NWPID Site Electrical Transmission Infrastructure Map.mxd

Source: Esri, DigitalGlobe, GeoEye, Earthstar Geographics, CNES/Airbus DS, USDA, USGS, AEX, Getmapping, Aerogrid, IGN, IGP, swisstopo, and the GIS User Community