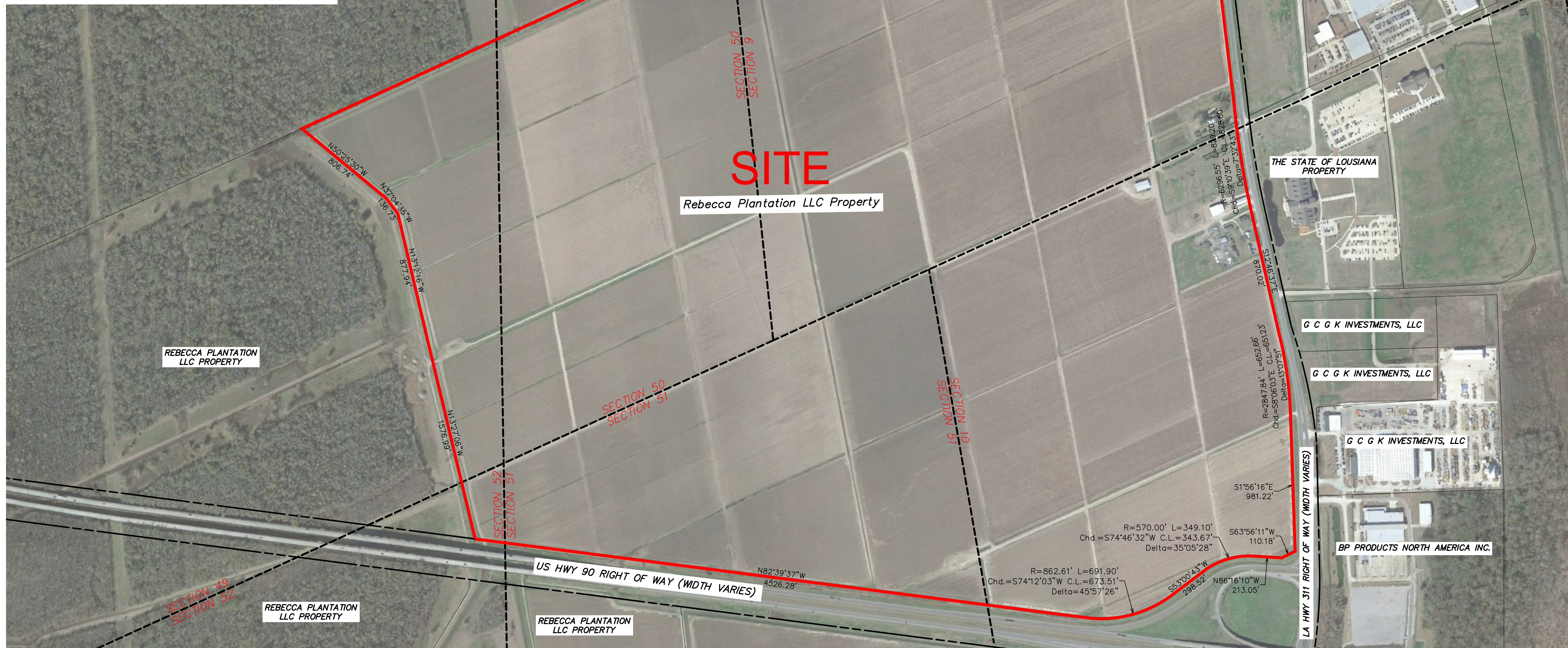
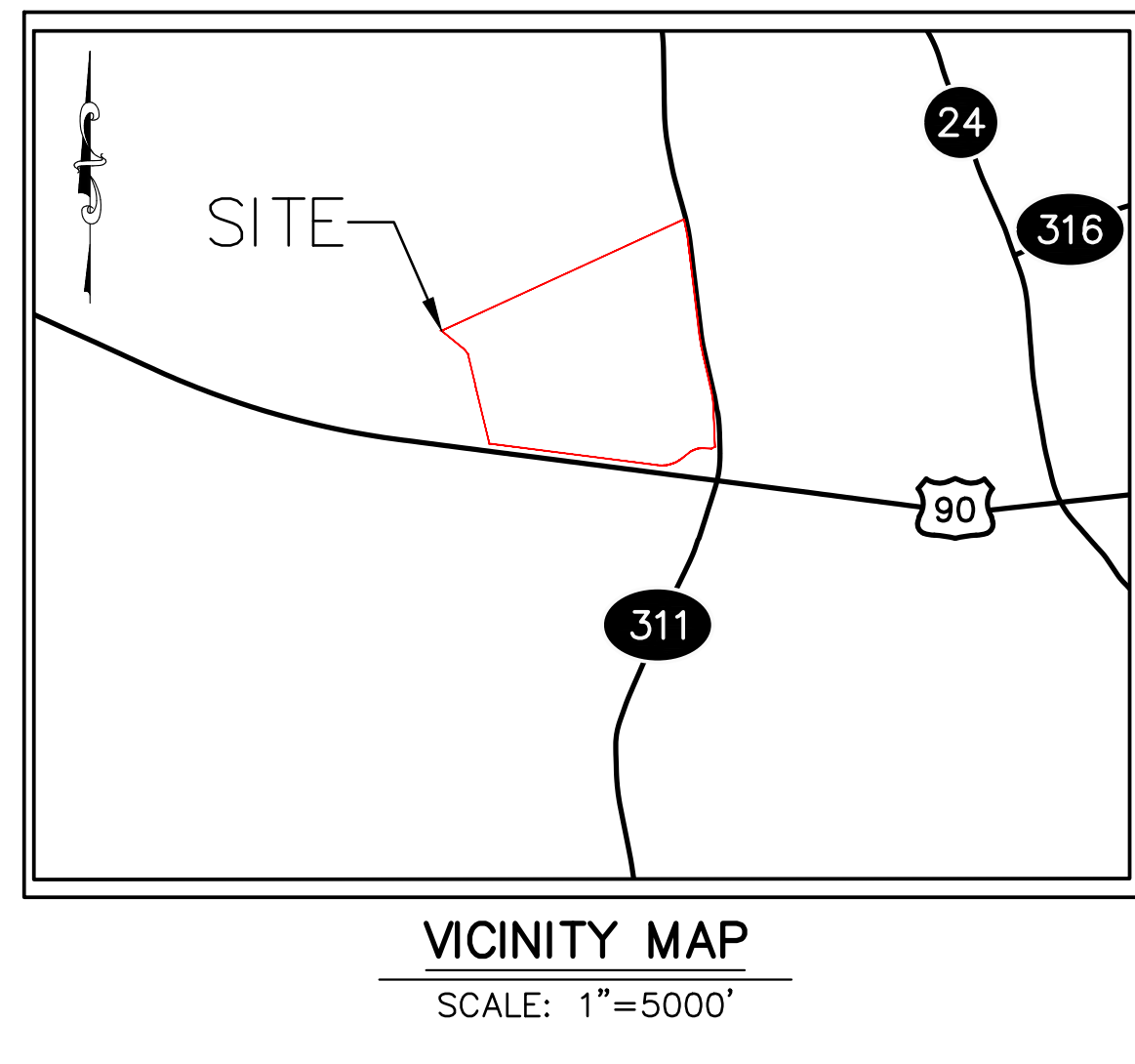


# Exhibit C. Rebecca Development Park North Property Boundary Aerial Exhibit

# Rebecca Development Park North Property Boundary Aerial Exhibit

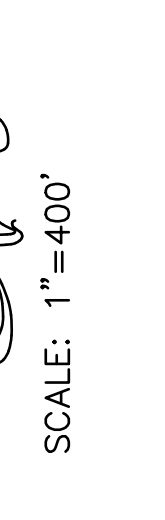


Project:

**Rebecca Development Park North**  
 Terrebonne Parish

Client:

SLEC



Revisions:

#	Date	Description

Key Plan:

**LEGEND**

—— SITE BOUNDARY  
 (709.95 AC. ±)

Sheet Title:

**Property Boundary Aerial Exhibit**

Date:	February 2019
Project Number:	213151
Drawn By:	DWC
Checked By:	TMG
Sheet:	

P:\213151\Bayou Region\Rebecca Development Park North\CAD\GIS\_templates\CAD\_Site\_Survey.dwg Jun 20, 2019 - 3:35pm

**GENERAL NOTES:**

- No attempt has been made by CSRS, Inc. to verify title, actual legal ownership, deed restrictions, servitudes, easements, or other burdens on the property, other than that furnished by the client or his representative.
- Depicted exhibit based on Act of Exchange of the property to Rebecca Plantation, Inc. on December 10, 1997.
- This is not a property boundary survey and is not intended to meet the Louisiana standards of practice for property boundary surveys. Bearings and distances of tracts were obtained from document referenced above.
- The coordinate system used is NAD83 Louisiana State Plane South (US feet). Coordinates were derived by overlaying the boundary on an aerial photograph and are within 100' of true location.
- Rights of Way, Easements, and Servitudes shown hereon have not been verified in the field and any shown are for general locative information only.