

Exhibit M. Port Barre Industrial Park - Central Site Electrical Transmission Infrastructure Map



Port Barre Industrial Park - Central Site Electrical Transmission Infrastructure Map

Port Barre Industrial Park - Central Site Site
St. Landry Parish, LA

One Acadiana

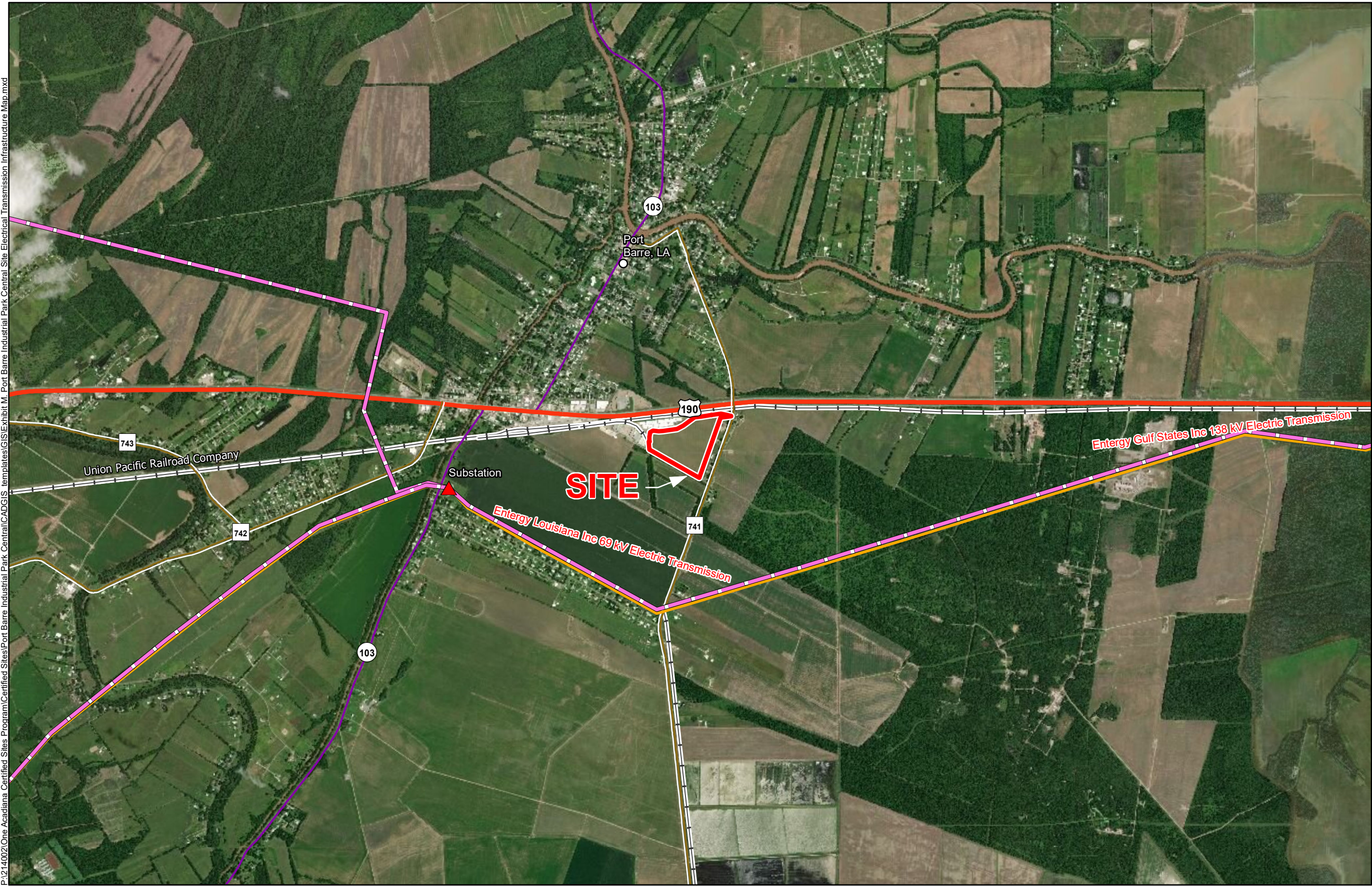


St. Landry Parish

LEGEND

- Site Boundary
- ▲ Substation
- Electric Transmission**
- 138 kV
- 69 kV
- Existing Roadway**
- US Highway
- Urban State Highway
- Rural State Highway
- Cities
- Railroad

P:\214002\One Acadiana Certified Sites Program\Certified Sites\Port Barre Industrial Park Central\CADGIS templates\CIS\Exhibit M. Port Barre Industrial Park Central Site Electrical Transmission Infrastructure Map.mxd



Date:	5/20/2019
Project Number:	214002
Drawn By:	DWC
Checked By:	EEB

- General Notes:**
1. No attempt has been made by CSRS, Inc. to verify site boundary, title, actual legal ownership, deed restrictions, servitudes, easements, or other burdens on the property, other than that furnished by the client or his representative.
 2. Transportation data from 2013 TIGER datasets via U.S. Census Bureau at <ftp://ftp2.census.gov/geo/tiger/TIGER2013>.
 3. Utility information from visual inspection and/or the individual utility operators. Exact field location has not been determined by survey. The lines shown are an approximate representation only and may have been offset for depiction purposes.
 4. 2015 aerial imagery from USDA-APFO National Agricultural Inventory Project (NAIP) and may not reflect current ground conditions.

