

Exhibit T. I-12 Industrial Site Roadway Transportation Infrastructure Wide Map

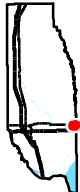


CSRS

I-12 Industrial Site Roadway Transportation Infrastructure Wide Map

I-12 Industrial Site
Tangipahoa Parish, LA

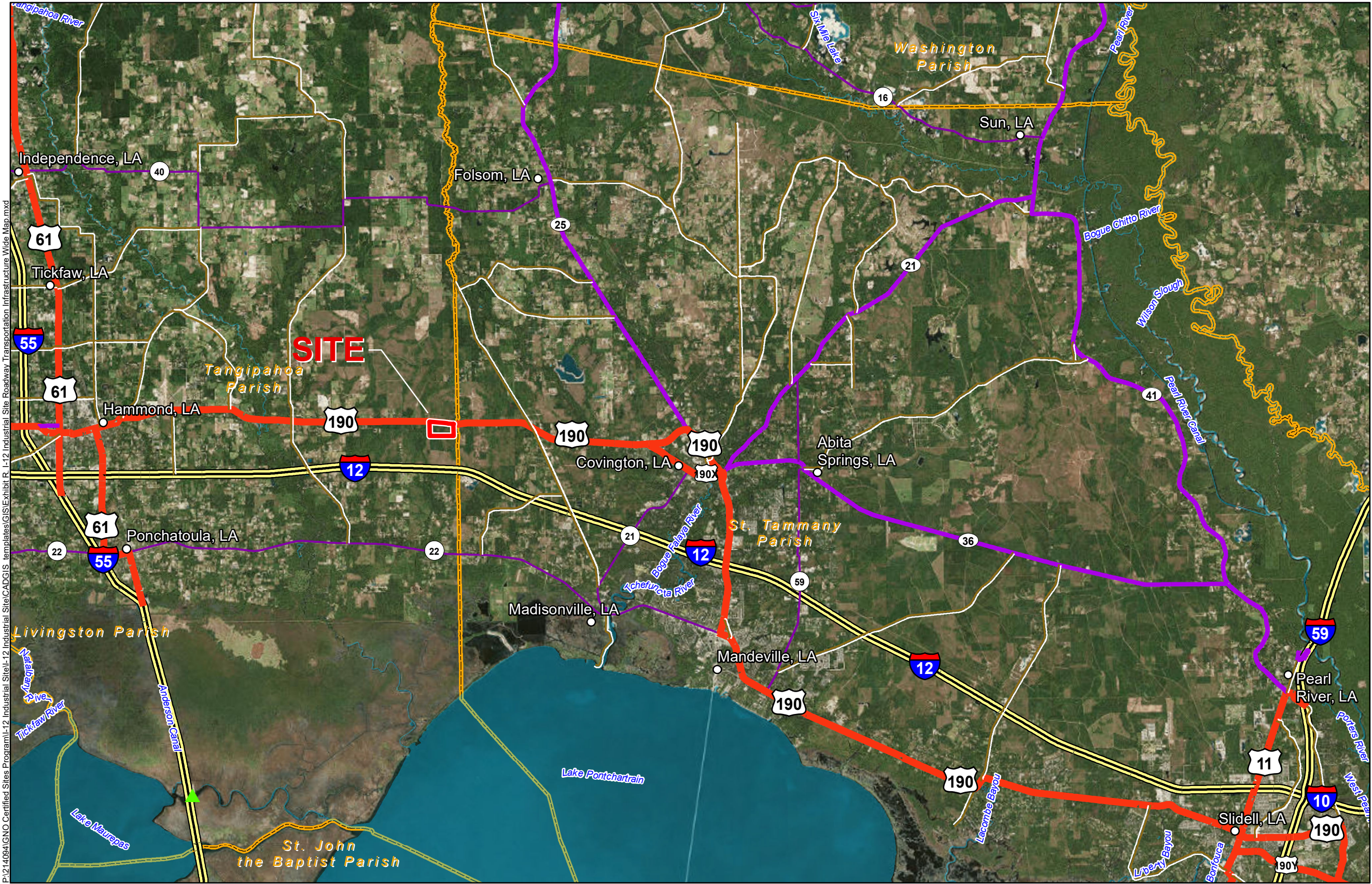
GNO



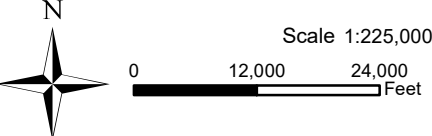
Tangipahoa Parish

LEGEND

- Site Boundary
- Shallow Draft Port
- Cities
- Existing Roadway
 - Interstate
 - US Highway
 - 4-Lane State Highway
 - Urban State Highway
 - Rural State Highway
- Waterbody
- Parish Boundary



General Notes:
1. No attempt has been made by CSRS, Inc. to verify site boundary, title, actual legal ownership, deed restrictions, servitudes, easements, or other burdens on the property, other than that furnished by the client or his representative.
2. Transportation data from 2013 TIGER datasets via U.S. Census Bureau at ftp2.census.gov/geo/tiger/TIGER2013.
3. 2015 aerial imagery from ESRI Online Basemaps and may not reflect current ground conditions.



GREATER NEW ORLEANS
INC.
REGIONAL ECONOMIC DEVELOPMENT

Date: 6/5/2019
Project Number:
Drawn By: AMB
Checked By: DWC

CSRS
IMAGINE SHAPE DELIVER
6767 Perkins Road Suite 200 Baton Rouge, LA 70808
Telephone: 225 769-0546 Fax: 225 767-0060
www.csrsonline.com