

# Churchill Technology & Business Park

## Exhibit 18

# Local Product Pipelines Map



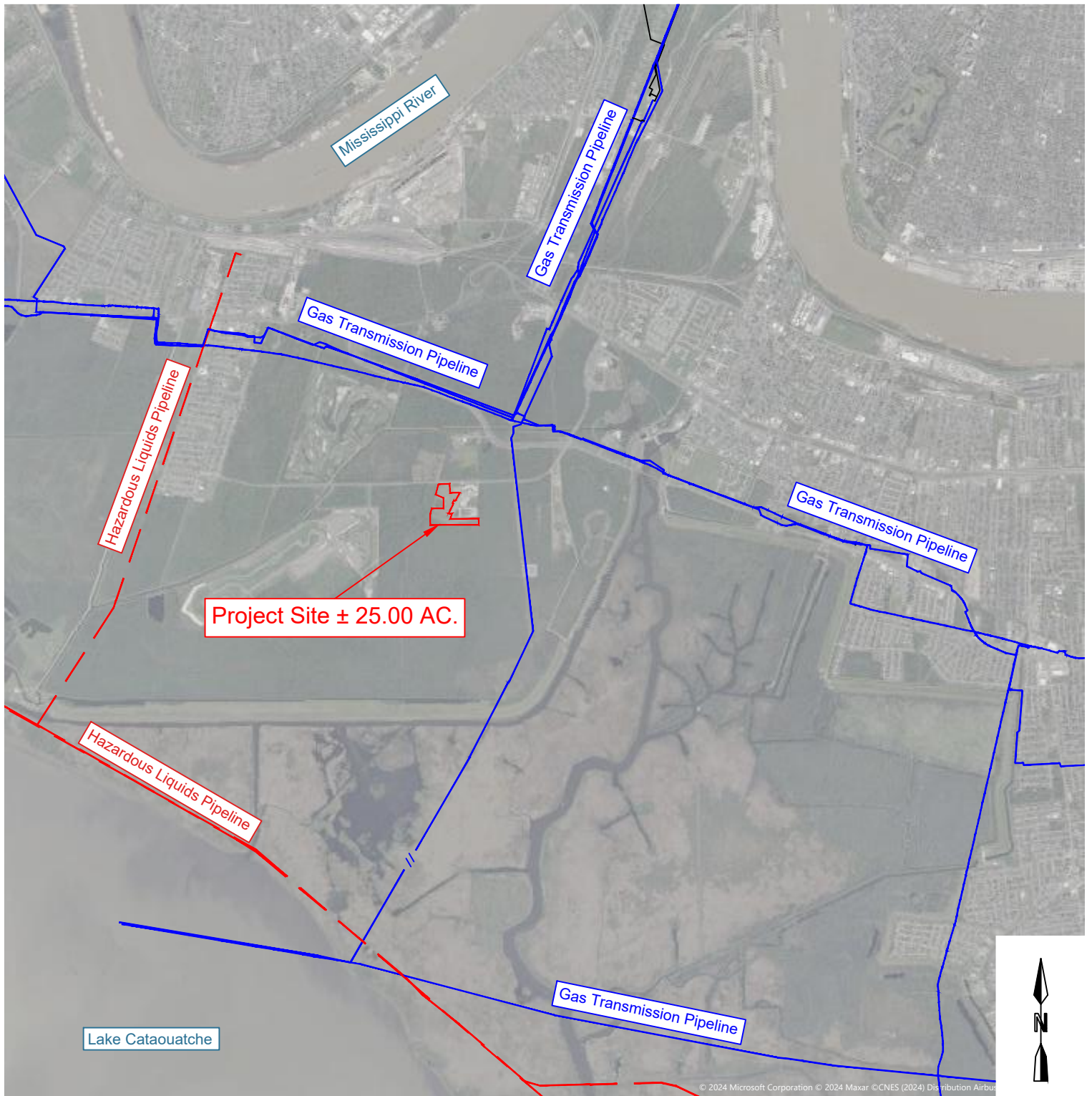
# JEDCO

Jefferson Parish Economic Development Commission



**GREATER NEW ORLEANS**  
INC  
REGIONAL ECONOMIC DEVELOPMENT

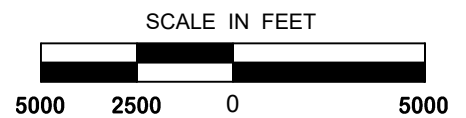
# Local Product Pipelines Map



© 2024 Microsoft Corporation © 2024 Maxar © CNES (2024) Distribution Airbus



**GREATER NEW ORLEANS**  
INC  
REGIONAL ECONOMIC DEVELOPMENT



**Churchill Technology and Business Park**

Avondale, LA 70094  
Jefferson Parish



PROJECT NO. 23-1544  
09-05-2024  
CHECKED BY SMT  
DRAWN BY JPO

