

SECT. 36, T-11-S, R-3-E
SECT. 1, T-12-S, R-3-E

OFFSHORE TECHNOLOGY

PROPOSED ROAD (50' R/W)

BROOKE BERNARD

LYMAN MEAUX
OR ASSIGNS

☉ CORDELL ROAD (60' R/W)

APPROXIMATE SECTION LINE

☉ U.S. HWY. 167
☉ NORTHBOUND LANE U.S. HWY. 167

QUALITY EQUIPMENT CO.

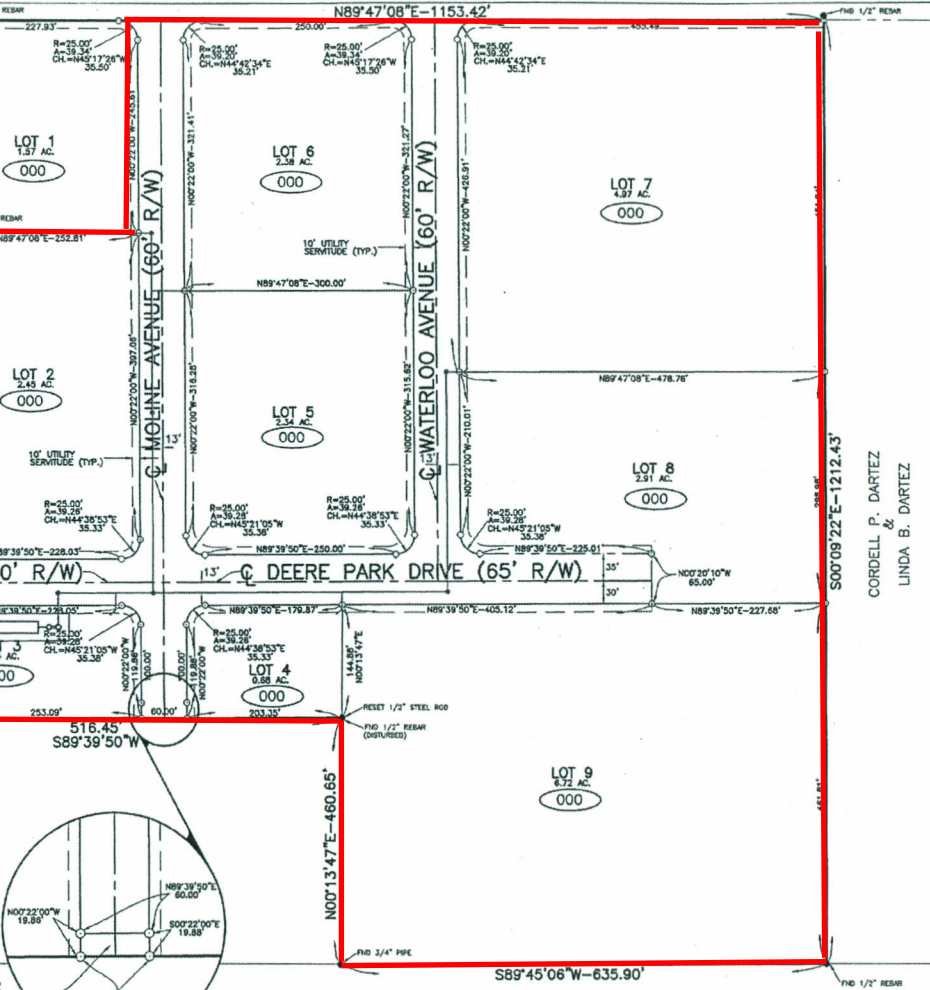
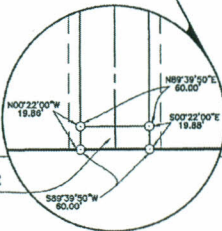
COASTAL CLIMATE
CONTROL STORAGE

DRILL LOGIC, INC.

CURTIS C. MONTEY
OR ASSIGNS

RESERVED FOR
DEERE PARK
SUBDIVISION

BEVERLY FAULK
OR ASSIGNS



CORDELL P. DARTEZ
&
LINDA B. DARTEZ

FLOOD NOTE:

US Highway 167