

Exhibit X.

Spanish Trail Industrial Park

Soils Conservation Service Map



Spanish Trail Industrial Park Soils Conservation Service Map

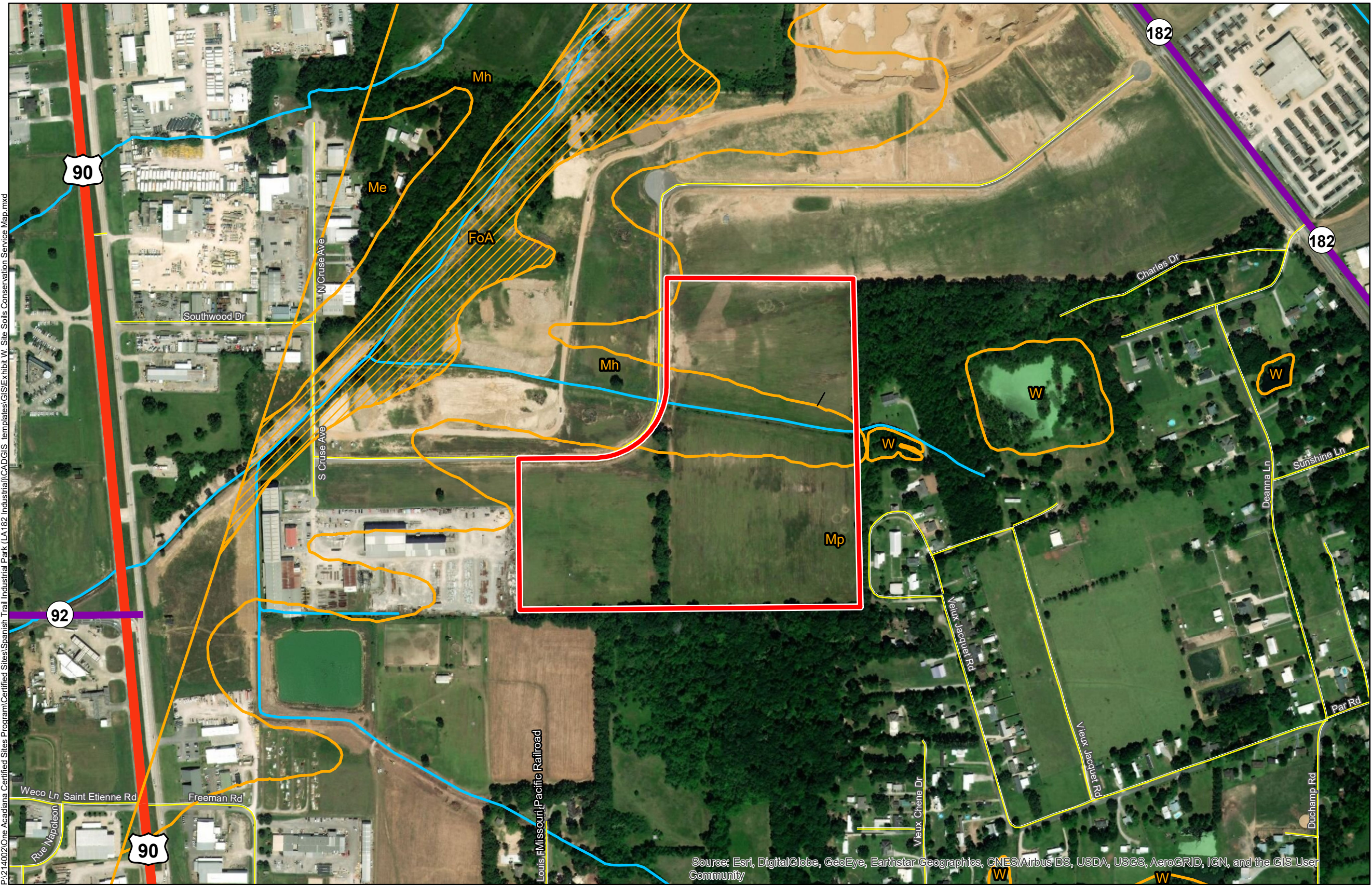
Spanish Trail Industrial Park
St. Martin Parish, LA

One Acadiana



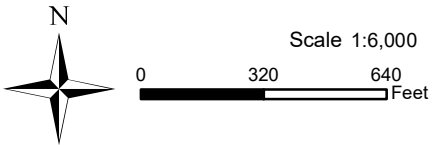
LEGEND

- Site Boundary
- Soil Type**
- FoA - Frost silt loam, 0 to 1 percent slopes
 - Me - Memphis silt loam, 1 to 3 percent slopes
 - Mh - Memphis silt loam, 5 to 8 percent slopes
 - Mp - Memphis-Frost complex, gently undulating
 - W - Water
- Existing Roadway**
- US Highway
 - Urban State Highway
 - Local Roads



General Notes:

1. No attempt has been made by CSRS, Inc. to verify site boundary, title, actual legal ownership, deed restrictions, servitudes, easements, or other burdens on the property, other than that furnished by the client or his representative.
2. Transportation data from 2013 TIGER datasets via U.S. Census Bureau at ftp2.census.gov/geo/tiger/TIGER2013.
3. Soils data from USDA SSURGO website: <http://websoilsurvey.sc.egov.usda.gov/App/WebSoilSurvey.aspx>.
4. 2015 aerial imagery from USDA-APFO National Agricultural Inventory Project (NAIP) and may not reflect current ground conditions.



Date: 1/22/2020
Project Number: 214002
Drawn By: BNF
Checked By: DWC

