

# Exhibit BB.

## AC Commercial Site All Utilities Infrastructure Site Map

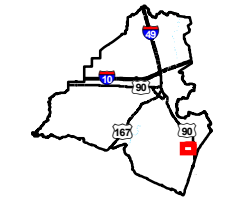




# AC Commercial Site All Utilities Infrastructure Site Map

AC Commercial Site  
Lafayette Parish, LA

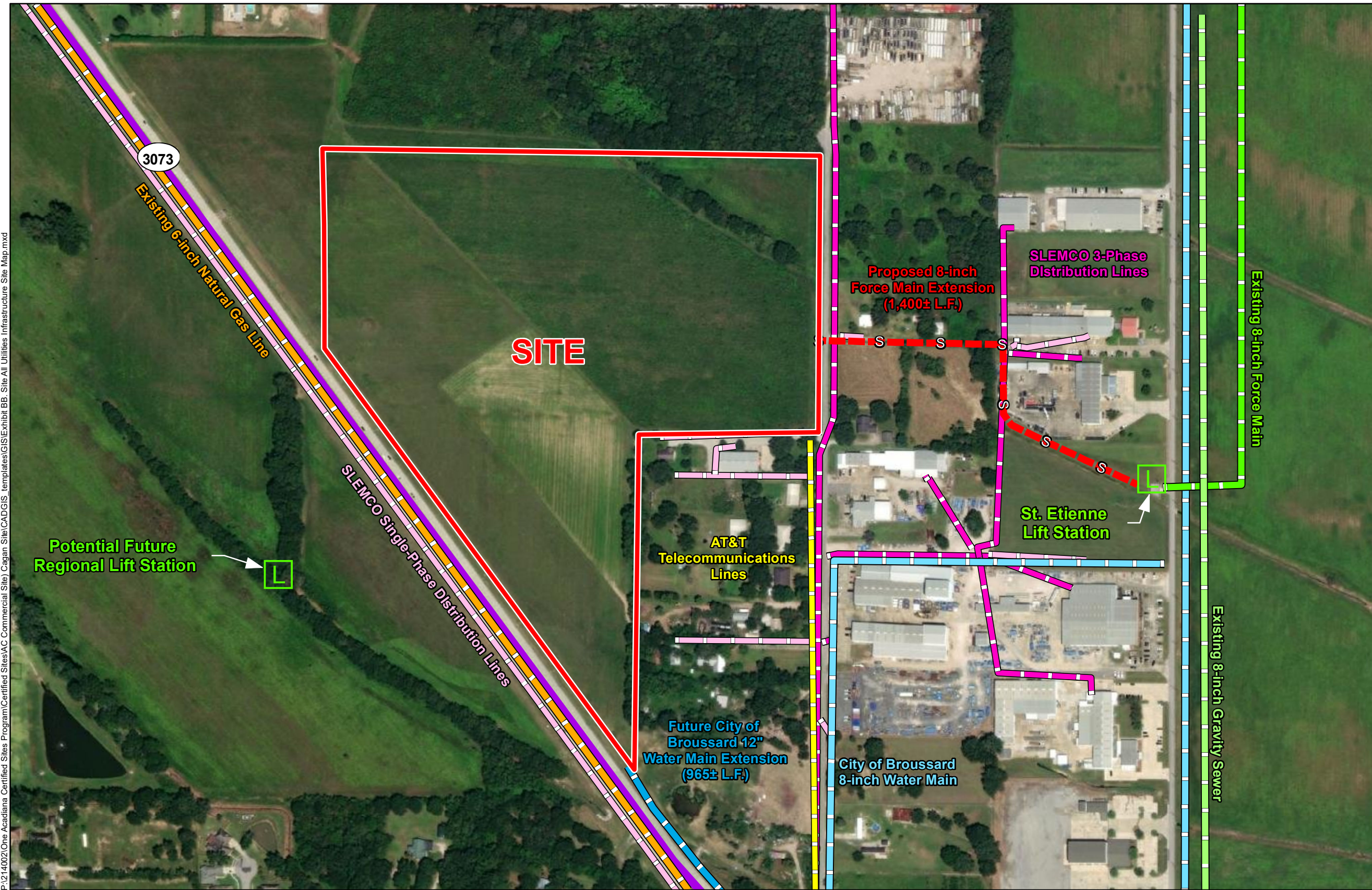
One Acadiana



Lafayette Parish

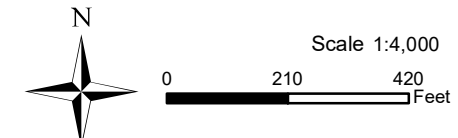
### LEGEND

- Site Boundary (44.94 Ac.±)
- Lift Stations
- Existing Force Main
- Existing Gravity Sewer
- Proposed 8-inch Force Main Extension
- City of Broussard Potable Water Lines
- City of Broussard Future Potable Water Line
- CenterPoint 6-inch Natural Gas Distribution Line
- SLEMCO Electrical Distribution Infrastructure**
- Single-Phase Distribution
- Three-Phase Distribution
- AT&T Telecommunications Lines
- Existing Roadway**
- 4-Lane State Highway
- Local Roads



P:\214002\One Acadiana Certified Sites\Program\Certified Sites\AC Commercial Site\CAD\GIS templates\GIS\Exhibit.BB\_Site All Utilities Infrastructure Site Map.mxd

General Notes:  
 1. No attempt has been made by CSRS, Inc. to verify site boundary, title, actual legal ownership, deed restrictions, servitudes, easements, or other burdens on the property, other than that furnished by the client or his representative.  
 2. Transportation data from 2013 TIGER datasets via U.S. Census Bureau at [ftp://ftp2.census.gov/geo/tiger/TIGER2013](http://ftp2.census.gov/geo/tiger/TIGER2013).  
 3. 2015 aerial imagery from USDA-APFO National Agricultural Inventory Project (NAIP) and may not reflect current ground conditions.  
 4. Utility information from visual inspection and/or the individual utility operators. Exact field location has not been determined by survey. The lines shown are an approximate representation only and may have been offset for depiction purposes.



Date: 7/15/2021  
 Project Number: 214002  
 Drawn By: SEW  
 Checked By: EEB

