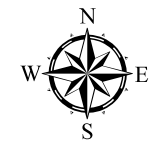


Exhibit N. New Roads Industrial Park Telecommunications Infrastructure Map



PARISH VICINITY



Legend

- Poydras Site
- Overhead Fiber Optic Cable
- T-1 Line
- Parish Boundary

CONFIDENTIAL

Source

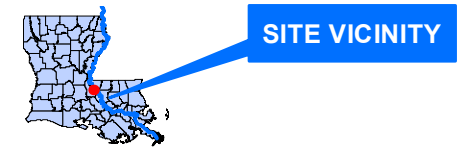
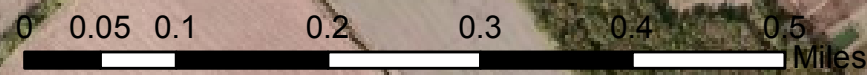
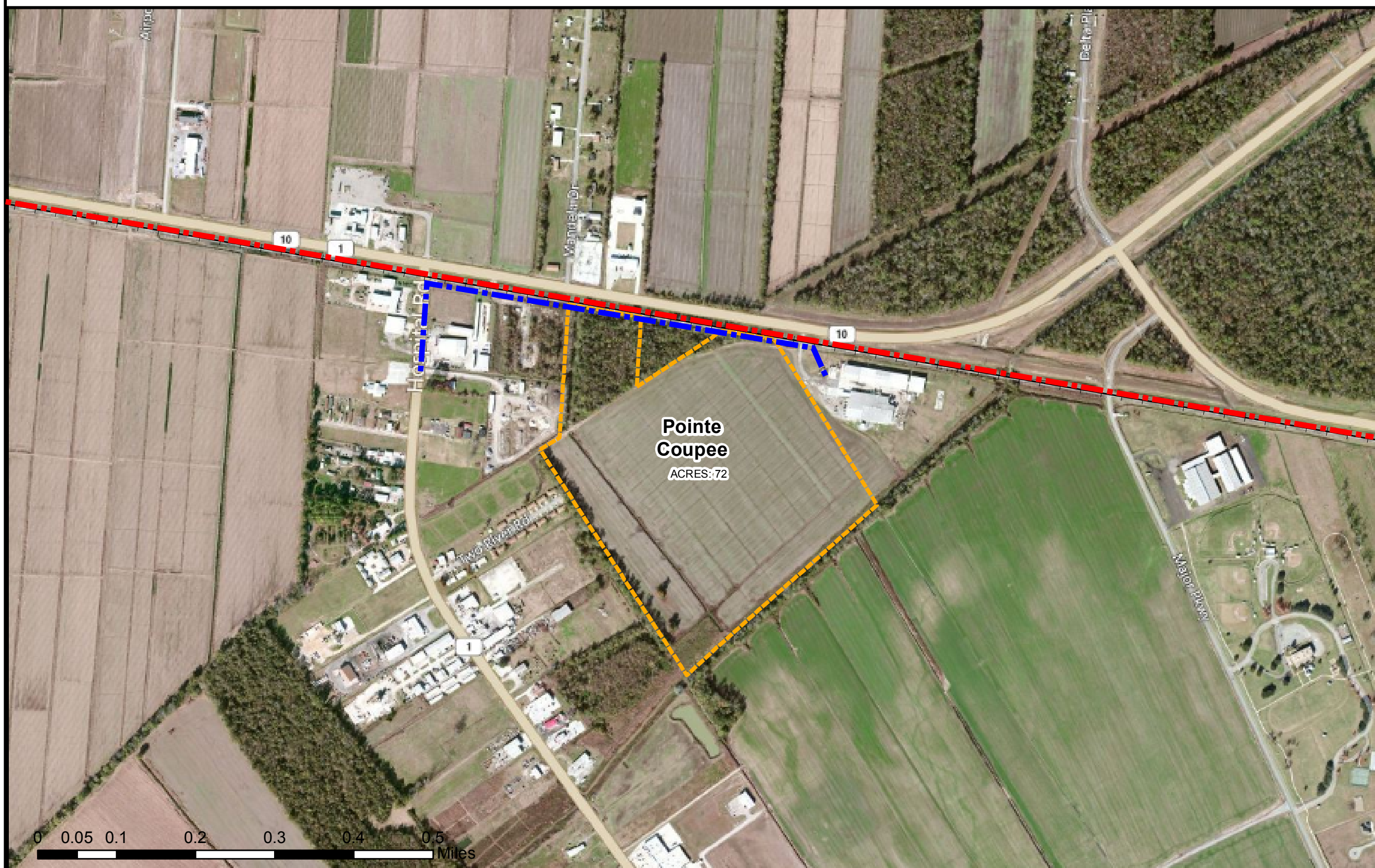
Parcel data supplied by Pointe Coupee Assessor.
Parcel acreage values approximated.
GIS features acquired from public domain state and federal data sources (GNIS, LOSCO, US Census Bureau).

Project
**POINTE COUPEE PARISH
NEW ROADS
INDUSTRIAL PARK**

Project

GIS Analyst		Date
WBM		9/13/12
LEO Project No.	Map No.	Version
12-003		001

LEO, LLC
17170 Perkins Road
Baton Rouge, Louisiana 70810
(225) 281-4202



**SITE PROFILE: New Roads Industrial Park
Acres: 72**