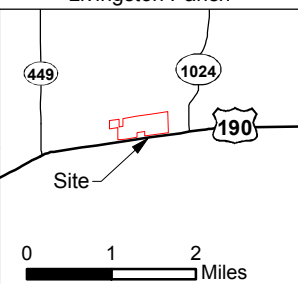
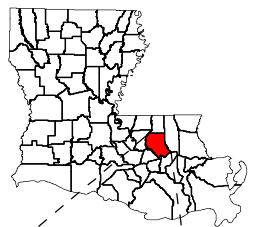


Exhibit U. Livingston Industrial Park Roadway Transportation Infrastructure Wide Map

Project:
Livingston Industrial Park
Livingston Parish, LA

Client:

BRAC

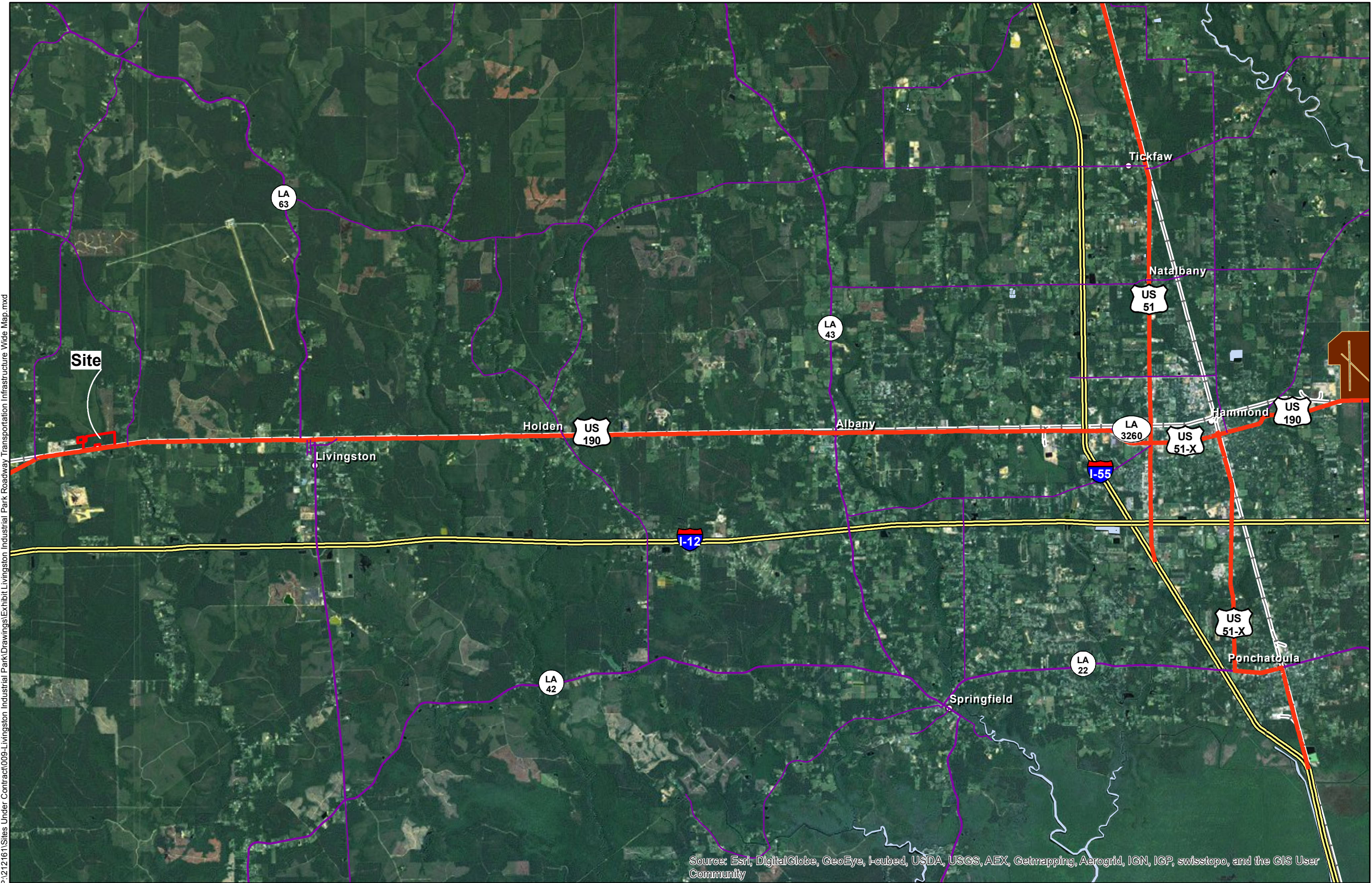


- Legend:
- Site Boundary
 - Airport
 - Interstate
 - US Highway
 - 4-Lane State Highway
 - Urban State Highway
 - Rural State Highway
 - Railroad
 - Waterbody



Source:
GIS features acquired from public domain
state and federal data sources (LDOTD,
GNIS, LOSCO, US Census Bureau).

Date:	12/6/2013
Project Number:	212161.20.009
Drawn By:	MMS
Checked By:	TMG



General Notes:

- No attempt has been made by CSRS, Inc. to verify title, actual legal ownership, deed restrictions, servitudes, easements, or other burdens on the property, other than that furnished by the client or his representative.
- Roads and port data obtained from Louisiana GIS Digital Map May 2007 Compilation DVD set.
- Railroad data obtained from 2013 TIGER datasets via U.S. Census Bureau at <ftp://ftp2.census.gov/geo/tiger/TIGER2013>.



Scale 1:119,935
0 0.75 1.5 Miles

P:\212161\Sites Under Contract\009-Livingston Industrial Park\Drawings\Exhibit Livingston Industrial Park Roadway Transportation Infrastructure Wide Map.mxd

Source: Esri, DigitalGlobe, GeoEye, i-cubed, USDA, USGS, AEX, Getmapping, Aerogrid, IGN, IGP, swisstopo, and the GIS User Community