

Exhibit D. Beauregard Airport Industrial Site Property Boundary Exhibit



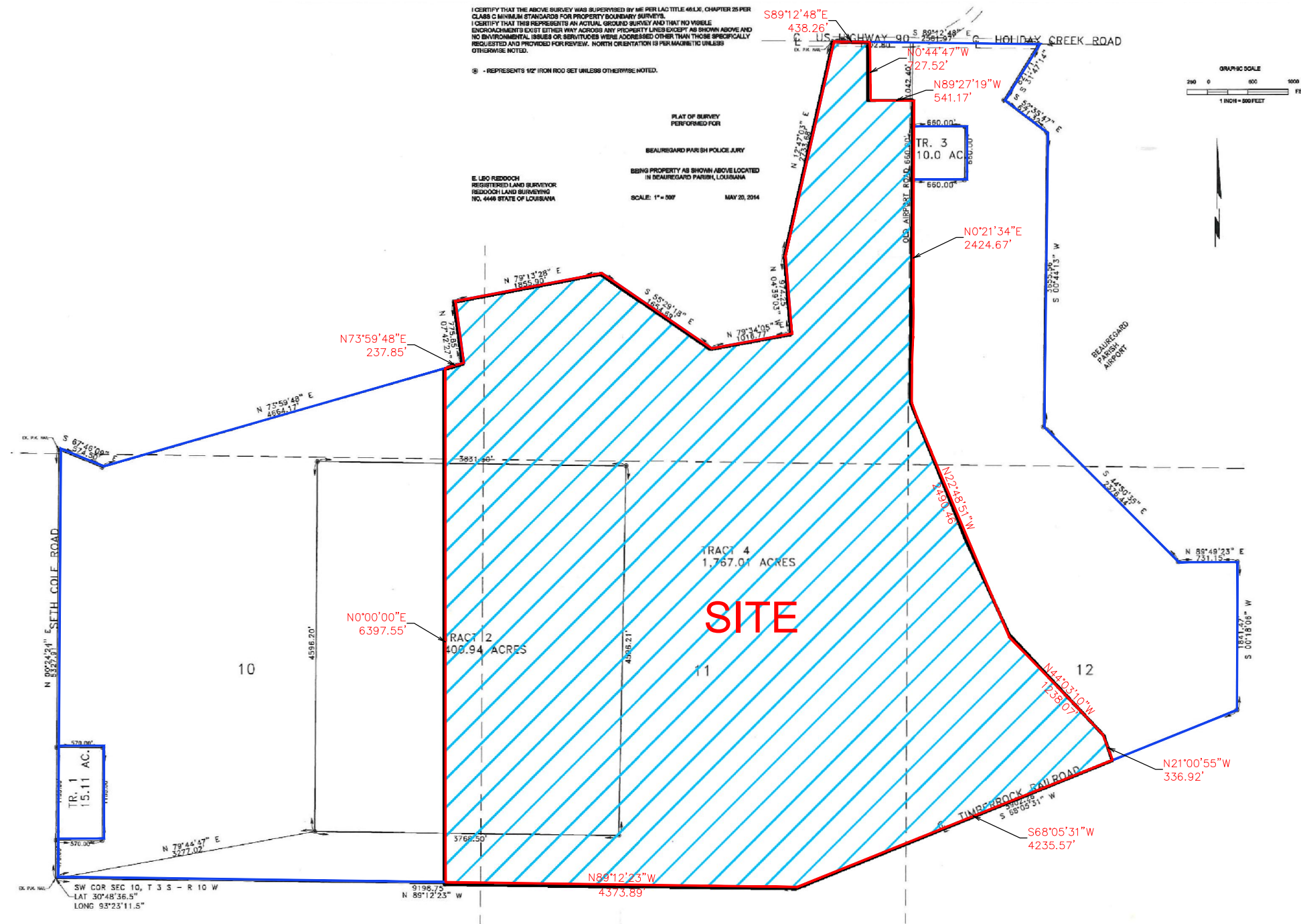
Beauregard Airport Industrial Site Property Boundary Exhibit

PROPERTY DESCRIPTION:
TRACT 1: COMMENCING AT THE SOUTHWEST CORNER OF SECTION 10, TOWNSHIP 3 SOUTH, RANGE 10 WEST, LOUISIANA MERIDIAN, BEAUREGARD PARISH, LOUISIANA; THENCE NORTH 00°24'24" EAST A DISTANCE OF 476.00 FEET TO THE POINT OF BEGINNING; THENCE NORTH 00°24'24" EAST A DISTANCE OF 1155.00 FEET; THENCE EASTERLY A DISTANCE OF 670.00 FEET; THENCE SOUTH 00°24'24" WEST A DISTANCE OF 1155.00 FEET; THENCE WESTERLY A DISTANCE OF 670.00 FEET TO THE POINT OF BEGINNING, CONTAINING 15.11 ACRES MORE OR LESS.

TRACT 2: COMMENCING AT THE SOUTHWEST CORNER OF SECTION 10, TOWNSHIP 3 SOUTH, RANGE 10 WEST, LOUISIANA MERIDIAN, BEAUREGARD PARISH, LOUISIANA; THENCE NORTH 79°44'47" EAST A DISTANCE OF 3277.02 FEET TO THE POINT OF BEGINNING; THENCE NORTHERLY A DISTANCE OF 4598.20 FEET; THENCE EASTERLY A DISTANCE OF 3831.60 FEET; THENCE SOUTHERLY A DISTANCE OF 4598.21 FEET; THENCE WESTERLY A DISTANCE OF 3788.60 FEET TO THE POINT OF BEGINNING, CONTAINING 400.94 ACRES MORE OR LESS.

TRACT 3: COMMENCING AT THE SOUTHWEST CORNER OF SECTION 10, TOWNSHIP 3 SOUTH, RANGE 10 WEST, LOUISIANA MERIDIAN, BEAUREGARD PARISH, LOUISIANA; THENCE NORTH 00°24'24" EAST A DISTANCE OF 5327.81 FEET; THENCE SOUTH 67°48'09" EAST A DISTANCE OF 574.50 FEET; THENCE NORTH 73°59'46" EAST A DISTANCE OF 4684.17 FEET; THENCE NORTH 07°42'27" WEST A DISTANCE OF 775.85 FEET; THENCE NORTH 79°13'28" EAST A DISTANCE OF 1855.90 FEET; THENCE SOUTH 55°29'18" EAST A DISTANCE OF 1654.89 FEET; THENCE NORTH 79°34'05" EAST A DISTANCE OF 1018.7 FEET; THENCE NORTH 04°39'03" WEST A DISTANCE OF 974.25 FEET; THENCE NORTH 12°47'03" EAST A DISTANCE OF 2733.88 FEET; THENCE SOUTH 89°12'48" EAST A DISTANCE OF 1002.80 FEET; THENCE SOUTHERLY A DISTANCE OF 1042.40 FEET TO THE POINT OF BEGINNING; THENCE EASTERLY A DISTANCE OF 680.00 FEET; THENCE SOUTHERLY A DISTANCE OF 680.00 FEET; THENCE WESTERLY A DISTANCE OF 680.00 FEET; THENCE NORTHERLY A DISTANCE OF 680.00 FEET TO THE POINT OF BEGINNING, CONTAINING 10.00 ACRES MORE OR LESS.

TRACT 4: COMMENCING AT THE SOUTHWEST CORNER OF SECTION 10, TOWNSHIP 3 SOUTH, RANGE 10 WEST, LOUISIANA MERIDIAN, BEAUREGARD PARISH, LOUISIANA; THENCE NORTH 00°24'24" EAST A DISTANCE OF 5327.81 FEET; THENCE SOUTH 67°46'09" EAST A DISTANCE OF 574.50 FEET; THENCE NORTH 73°59'46" EAST A DISTANCE OF 4684.17 FEET; THENCE NORTH 07°42'27" WEST A DISTANCE OF 775.85 FEET; THENCE NORTH 79°13'28" EAST A DISTANCE OF 1855.90 FEET; THENCE SOUTH 55°29'18" EAST A DISTANCE OF 1654.89 FEET; THENCE NORTH 79°34'05" EAST A DISTANCE OF 1018.7 FEET; THENCE NORTH 04°39'03" WEST A DISTANCE OF 974.25 FEET; THENCE NORTH 12°47'03" EAST A DISTANCE OF 2733.88 FEET; THENCE SOUTH 89°12'48" EAST A DISTANCE OF 2581.87 FEET; THENCE SOUTH 31°47'14" WEST A DISTANCE OF 821.71 FEET; THENCE SOUTH 62°35'47" EAST A DISTANCE OF 871.32 FEET; THENCE SOUTH 00°44'13" WEST A DISTANCE OF 3655.66 FEET; THENCE SOUTH 44°50'35" EAST A DISTANCE OF 2378.44 FEET; THENCE NORTH 89°49'23" EAST A DISTANCE OF 731.15 FEET; THENCE SOUTH 00°18'08" WEST A DISTANCE OF 1841.47 FEET; THENCE SOUTH 88°05'31" WEST A DISTANCE OF 5802.28 FEET; THENCE NORTH 89°12'23" WEST A DISTANCE OF 9188.76 FEET TO THE POINT OF BEGINNING, CONTAINING 1,767.01 ACRES MORE OR LESS.



GENERAL NOTES:

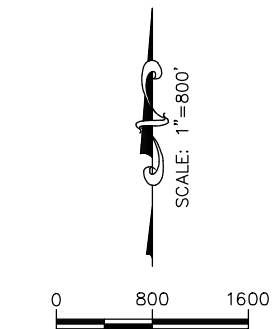
- No attempt has been made by CSRS, Inc. to verify title, actual legal ownership, deed restrictions, servitudes, easements, or other burdens on the property, other than that furnished by the client or his representative.
- Depicted exhibit based on a plat of survey by Reddoch Land Surveying dated May 20, 2014.
- This is not an official property boundary survey and is not intended to meet the Louisiana standards of practice for property boundary surveys. Bearings and distances of tracts were obtained from document referenced above.
- The coordinate system used is NAD83 Louisiana State Plane South (US feet). Coordinates were derived by overlaying the boundary on an aerial photograph and are within 100' of true location.
- Bearings and distances shown in red derived by sketching approximate boundary over aerial imagery. Exact metes and bounds of internal subdivision must be determined by a Licensed Louisiana Surveyor.

Project:

Beauregard Airport Industrial Site DeRidder, LA

Client:

SWLA EDA



Revisions:

#	Date	Description

LEGEND

- SITE BOUNDARY (1,187.59 AC. ±)
- PLAT BOUNDARY

Sheet Title:

Property Boundary Exhibit

Date: October 2016

Project Number: 214135

Drawn By: TMK

Checked By: JAY

Sheet: