

April 30, 2015

Mr. Larry Henson
Louisiana Economic Development (LED)
1051 North Third St.
Baton Rouge, LA 70802-5239

Mr. David Conner
Southwest Economic Development Alliance (SWLA)
P.O. Box 3110
Lake Charles, LA 70602

— Parks & Planning

— Transportation

— Site Development

— Utility Systems

— Land Surveying

— Construction Services

— Environmental Services

— Real Estate Services

RE: B85-Chennault Site 5 (160 Acres)
Airport Infrastructure

Dear Gentlemen:

SJB Group, LLC (SJB) has been authorized by Louisiana Economic Development (LED and Southwest Louisiana Economic Alliance (SWLA) to perform due diligence investigations to determine the existence of fatal flaws, if any, that would inhibit the development of Chennault Site 5 (+/- 160 acres), located southeast of the City of Lake Charles in Calcasieu Parish, Louisiana.

The nearest commercial airport with scheduled passenger service is the Lake Charles regional Airport, located at 500 Airport Boulevard, #104, Lake Charles, LA 70607. The airport is approximately 11.0 miles from the site and the travel time from site to the airport is approximately 16 minutes. This airport is currently serving two (2) commercial carriers but does not have direct International passenger service or International Cargo service. However, International passenger service is available within a two-hour flight from this airport.

Chennault International Airport (IATA: CWF, ICAO: KCWF, FAA LID: CWF) is a public use airport adjacent to the eastern boundary of the site. While a fully operational airport, it is an industrial center that can accommodate every type of aircraft and provides no commercial air services. Chennault features 13 million square feet of concrete and about 1.5 million square feet of hangar, office and warehouse space. Chennault's fixed-base operator (FBO), Million Air, is an industry leader in providing fuel delivery, flight services, pilot services and personal-touch ground facilitation for military, corporate, private and charter aviation

Please feel free to contact me at (225) 769-3400, at any time, should you have any questions or need further information.

Sincerely,

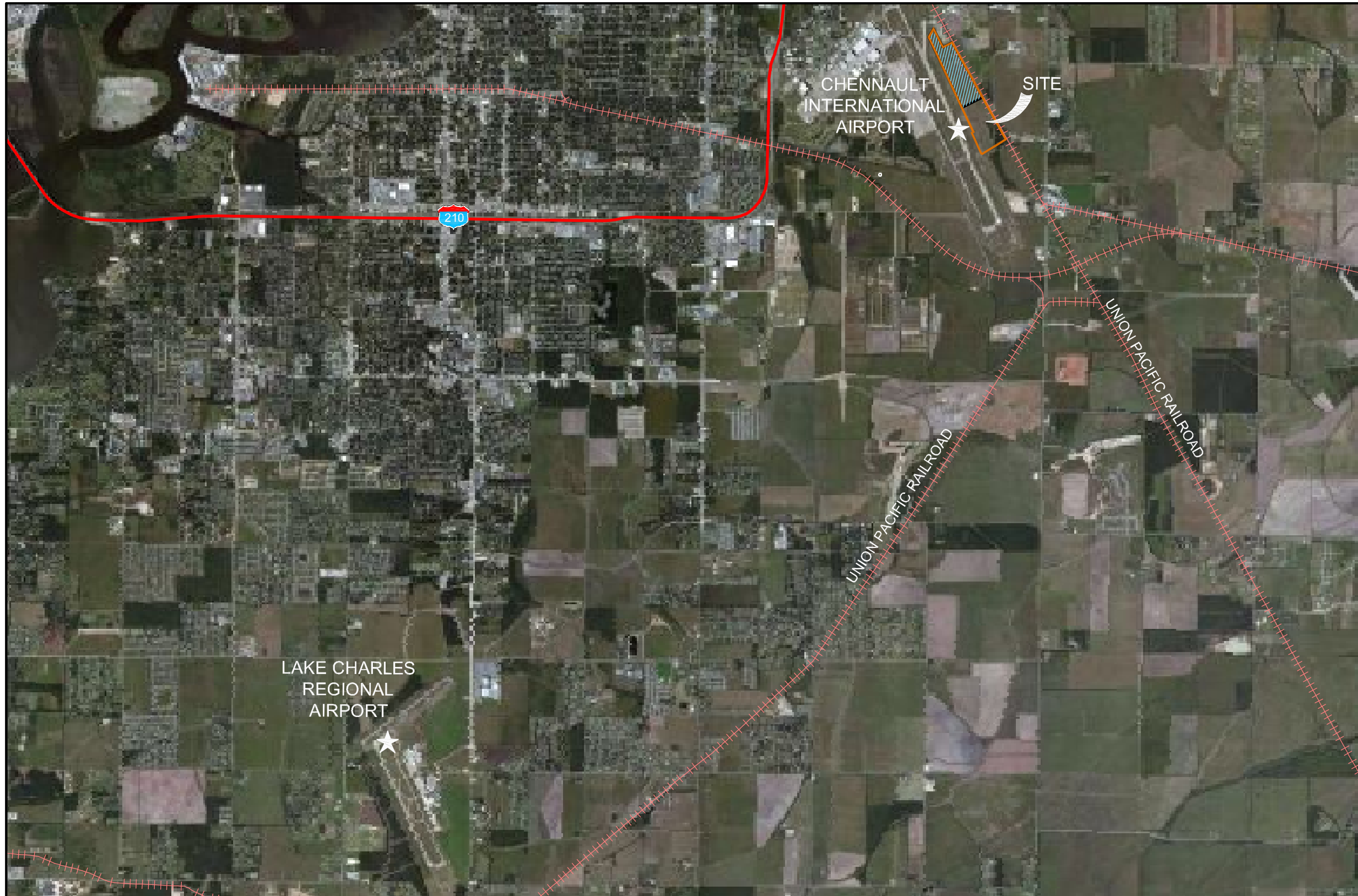
SJB GROUP, LLC



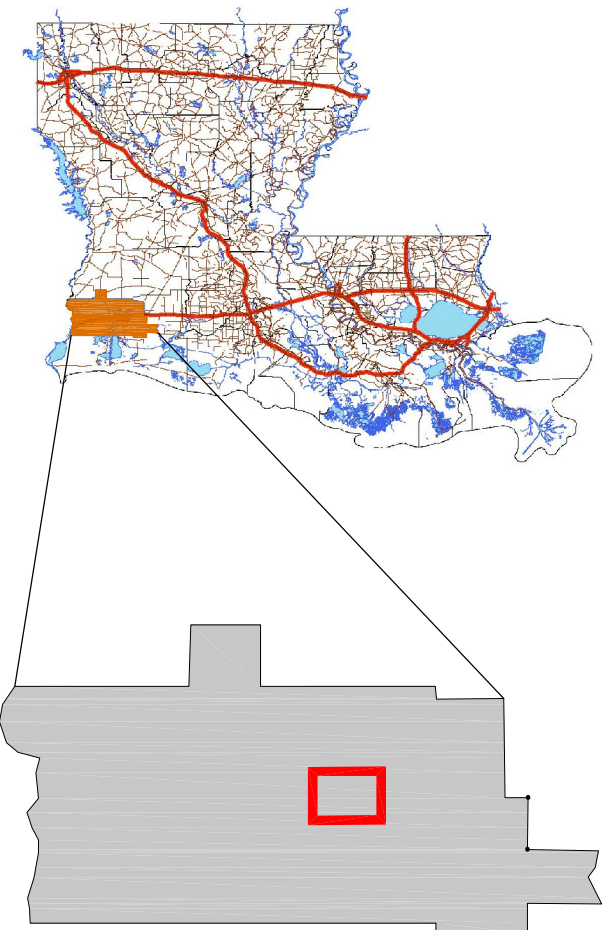
Michael L. Thompson, P.E., C.E.T.
Engineering Department Manager

P. O. Box 1751
Baton Rouge, Louisiana
70821-1751
(225) 769-3400
Fax (225) 769-3596
www.sjbgroup.com


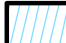
Exhibit Y - Airport Infrastructure Map



 Calcasieu Parish



Available Site Data

-  Chennault Site 5
-  Development Tract

Source:
 - Aerial Photo: 2014 Google Earth
 - Site Boundaries are Approximate
 - 12/10/2014



**LOUISIANA
ECONOMIC
DEVELOPMENT**
 Opportunity Louisiana.com

