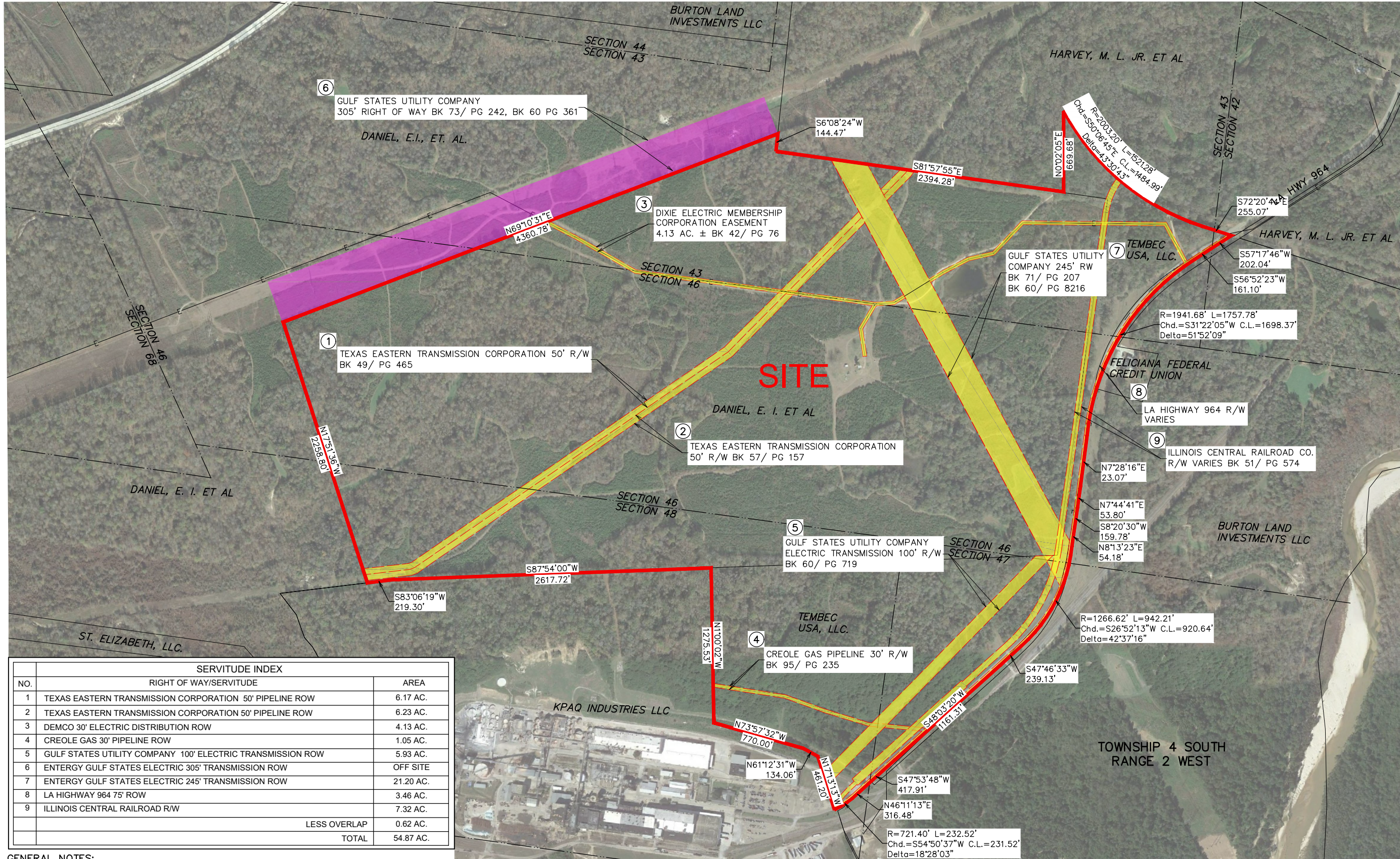
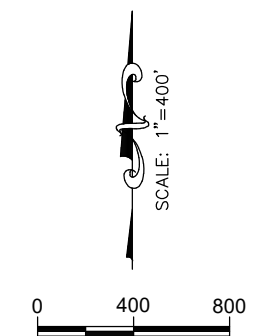
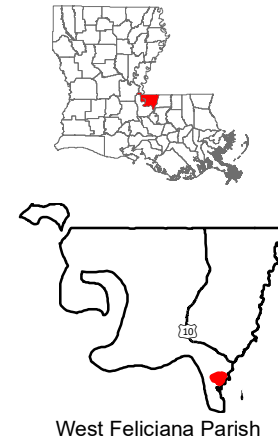


Exhibit H. West Feliciana Industrial Park Site Property Rights of Way Exhibit



West Feliciana Industrial Park Site Property Rights of Way Exhibit



SERVITUDE INDEX		
NO.	RIGHT OF WAY/SERVITUDE	AREA
1	TEXAS EASTERN TRANSMISSION CORPORATION 50' PIPELINE ROW	6.17 AC.
2	TEXAS EASTERN TRANSMISSION CORPORATION 50' PIPELINE ROW	6.23 AC.
3	DEMCO 30' ELECTRIC DISTRIBUTION ROW	4.13 AC.
4	CREOLE GAS 30' PIPELINE ROW	1.05 AC.
5	GULF STATES UTILITY COMPANY 100' ELECTRIC TRANSMISSION ROW	5.93 AC.
6	ENTERGY GULF STATES ELECTRIC 305' TRANSMISSION ROW	OFF SITE
7	ENTERGY GULF STATES ELECTRIC 245' TRANSMISSION ROW	21.20 AC.
8	LA HIGHWAY 964 75' ROW	3.46 AC.
9	ILLINOIS CENTRAL RAILROAD R/W	7.32 AC.
	LESS OVERLAP	0.62 AC.
	TOTAL	54.87 AC.

GENERAL NOTES:

- No attempt has been made by CSRS, Inc. to verify title, actual legal ownership, deed restrictions, servitudes, easements, or other burdens on the property, other than that furnished by the client or his representative.
- Depicted exhibit based on "PLAT SHOWING A PORTION OF THE CENTERLINE OF THE HIGHWAY 964 ON PAPER MILL TRACT LOCATED IN SECTIONS 42, 43, 46, AND 47 TOWNSHIP 4 SOUTH, RANGE 2 WEST GREENSBURG LAND DISTRICT, WESTFELICIANA PARISH, LOUISIANA FOR R.L. BURTON" by CHARLES F. WILSON, PLS dated AUGUST 21, 2010, "MAP SHOWING RESUBDIVISION OF THE ST. FRANCISVILLE PAPER COMPANY PROPERTY, INTO TRACTS 2,3,4,& THE REMAINING PORTION, LOCATED IN SECTIONS 42, 43, 46, 47, 48, & 49 T4S-R2W, G.L.D., WEST FELICIANA PARISH, LOUISIANA FOR TEMBEC INC." by ALVIN FAIRBURN, JR., PLS, dated AUGUST 4, 2008, AND legal description as filed in the West Feliciana Parish Clerk of Courts.
- This is not a property boundary survey and is not intended to meet the Louisiana standards of practice for property boundary surveys. Bearings and distances of tracts were obtained from document referenced above.
- The coordinate system used is NAD83 Louisiana State Plane South (US feet). Coordinates were derived by overlaying the boundary on an aerial photograph and are within 100' of true location.
- Rights of Way, Easements, and Servitudes shown hereon have not been verified in the field and any shown are for general locative information only.

P:\212161\Sites Under Contract\019 - West Feliciana Industrial Park\CADGIS_Templates\CAD Survey Exhibits.dwg Jun 06, 2017 - 8:45am