

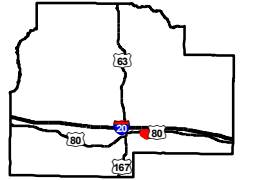
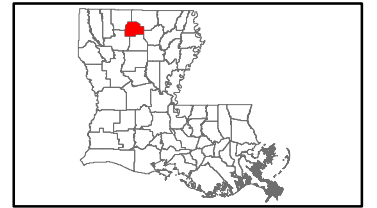
Exhibit V. Ruston Industrial Park Soils Conservation Service Map



Ruston Industrial Park Soils Conservation Service Map

Ruston Industrial Park
Lincoln Parish, LA

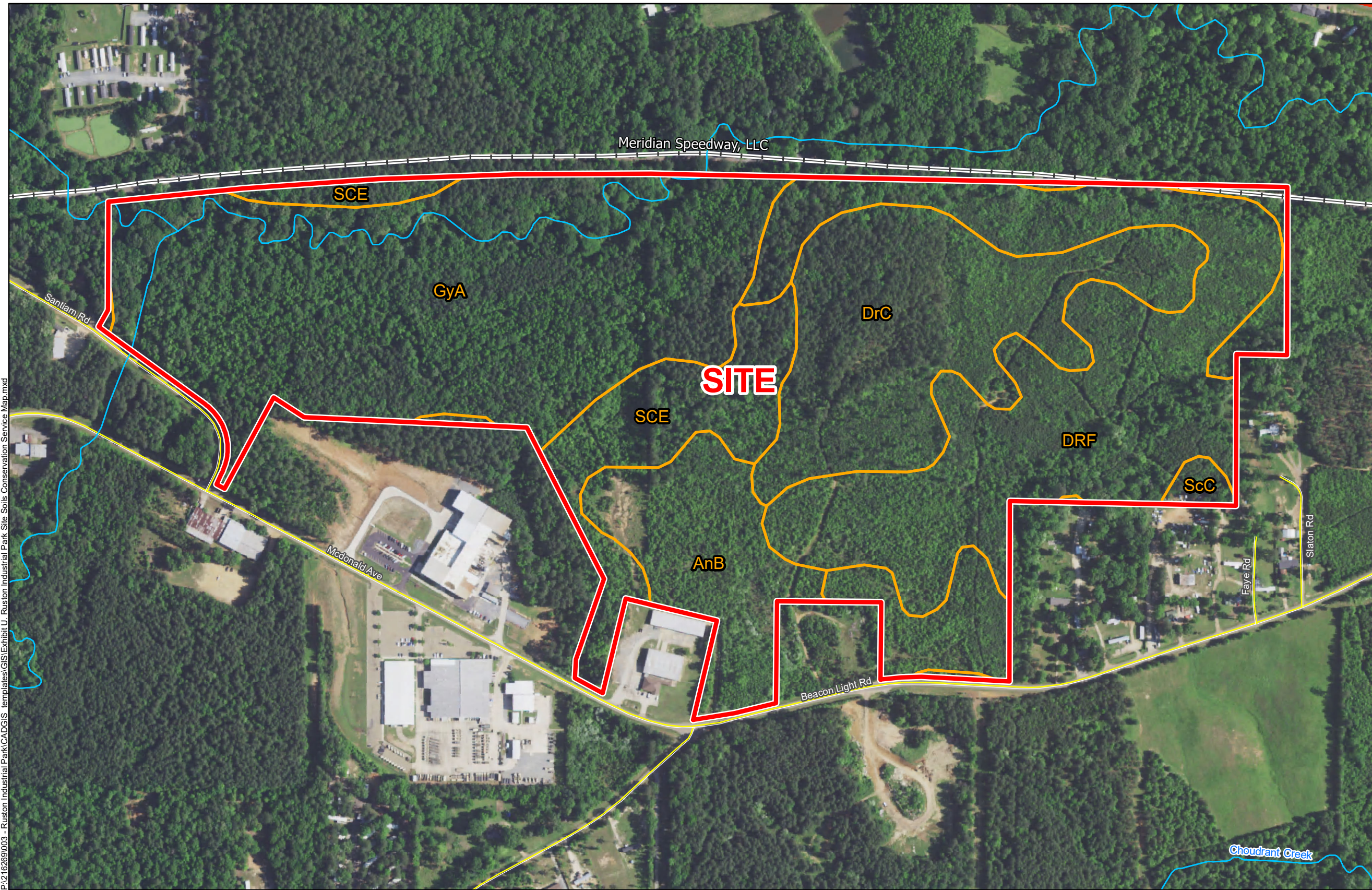
City of Ruston



Lincoln Parish

LEGEND

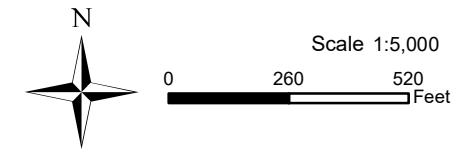
- Site Boundary
- Soil Type**
- AnB - Angie very fine sandy loam, 1 to 3 percent slopes
- DRF - Darley-Sacul association, 12 to 30 percent slopes
- DrC - Darley gravelly fine sandy loam, 1 to 5 percent slopes
- GyA - Guyton-Ouachita silt loams, frequently flooded
- SCE - Sacul very fine sandy loam, 5 to 12 percent slopes
- ScC - Sacul very fine sandy loam, 1 to 5 percent slopes
- Existing Roadway**
- US Highway
- Local Roads
- Railroad
- Stream or River



P:\216269\003 - Ruston Industrial Park\CAD\GIS templates\GIS\Exhibit U. Ruston Industrial Park Site Soils Conservation Service Map.mxd

General Notes:

1. No attempt has been made by CSRS, Inc. to verify site boundary, title, actual legal ownership, deed restrictions, servitudes, easements, or other burdens on the property, other than that furnished by the client or his representative.
2. Transportation data from 2013 TIGER datasets via U.S. Census Bureau at [ftp://ftp2.census.gov/geo/tiger/TIGER2013](http://ftp2.census.gov/geo/tiger/TIGER2013).
3. Soils data from USDA SSURGO website: <http://websoilsurvey.sc.egov.usda.gov/App/WebSoilSurvey.aspx>.
4. 2015 aerial imagery from USDA-APFO National Agricultural Inventory Project (NAIP) and may not reflect current ground conditions.



Date: 8/8/2017
Project Number: 216269
Drawn By: AMB
Checked By: JAY

