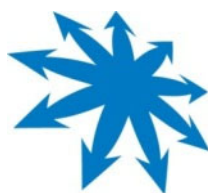


Exhibit Z.

Syngenta Site

National Wetlands Inventory Map

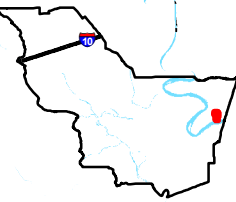


Baton Rouge Area Chamber®

Syngenta Site National Wetlands Inventory Map

Syngenta Site
Iberville Parish, LA

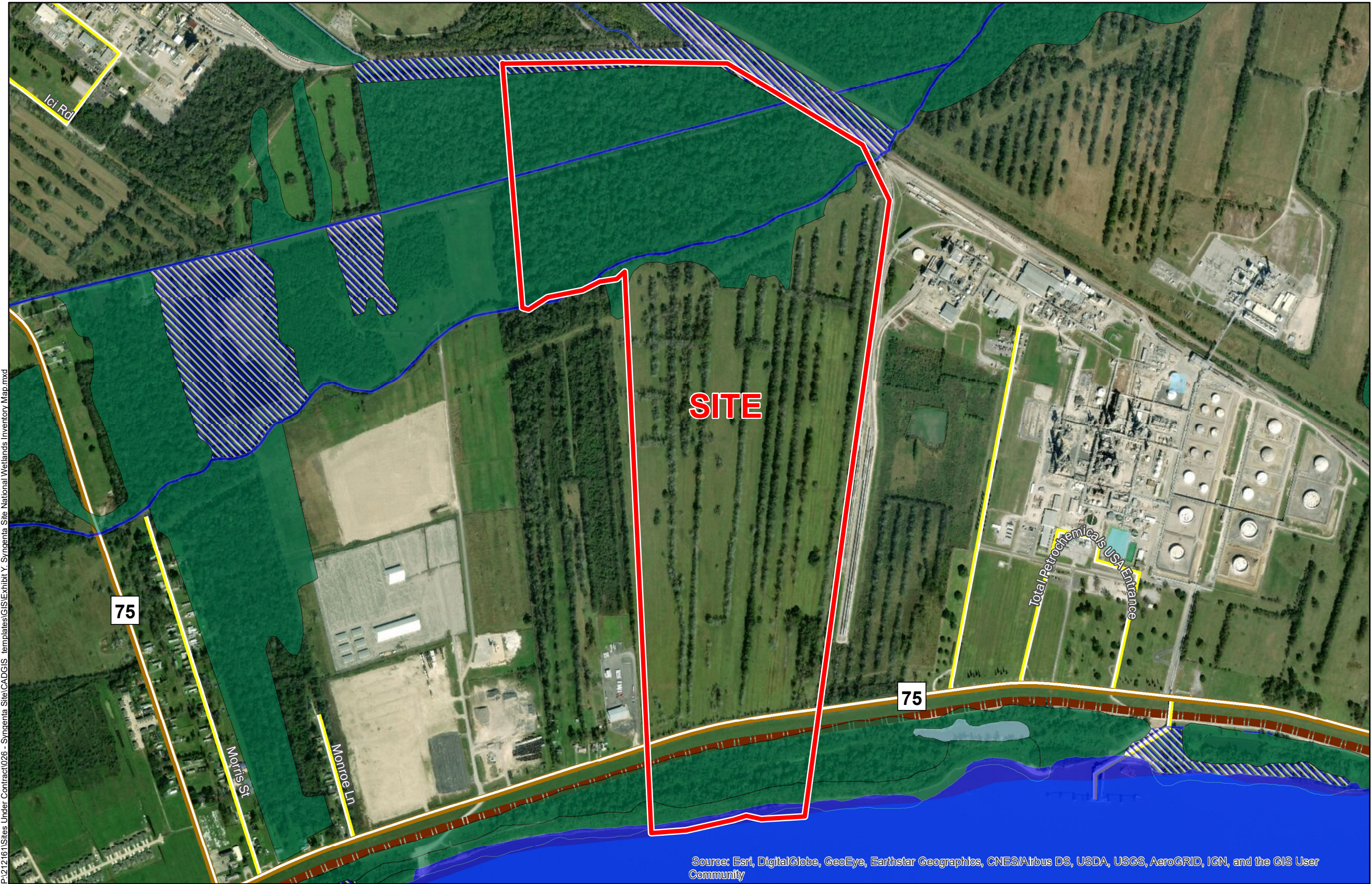
BRAC



Iberville Parish

LEGEND

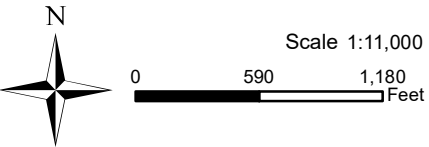
- Site Boundary
- Wetland Type**
 - Freshwater Emergent Wetland
 - Freshwater
 - Forested/Shrub Wetland
 - Freshwater Pond
 - Riverine
- Existing Roadway**
 - Rural State Highway
 - Local Roads
 - Levee
 - Waterbody



P:\212161\Sites Under Contract\026 - Syngenta Site\CAD\GIS templates\GIS\Exhibit Y. Syngenta Site National Wetlands Inventory Map.mxd

Source: Esri, DigitalGlobe, GeoEye, Earthstar Geographics, CNES/Airbus DS, USDA, USGS, AeroGRID, IGN, and the GIS User Community

General Notes:
1. No attempt has been made by CSRS, Inc. to verify site boundary, title, actual legal ownership, deed restrictions, servitudes, easements, or other burdens on the property, other than that furnished by the client or his representative.
2. Transportation data from 2013 TIGER datasets via U.S. Census Bureau at ftp2.census.gov/geo/tiger/TIGER2013.
3. National Wetlands Inventory (NWI) data current as of May 2016 as downloaded from http://www.fws.gov/wetlands/Downloads/State/LA_wetlands.zip.
4. 2015 aerial imagery from USDA-APFO National Agricultural Inventory Project (NAIP) and may not reflect current ground conditions.



Date: 3/4/2020
Project Number: 212161212161
Drawn By: BNF
Checked By: EEB

CSRS