

Exhibit L. Belle Grove Site Electrical Transmission Infrastructure Map



Belle Grove Electrical Transmission Infrastructure Map

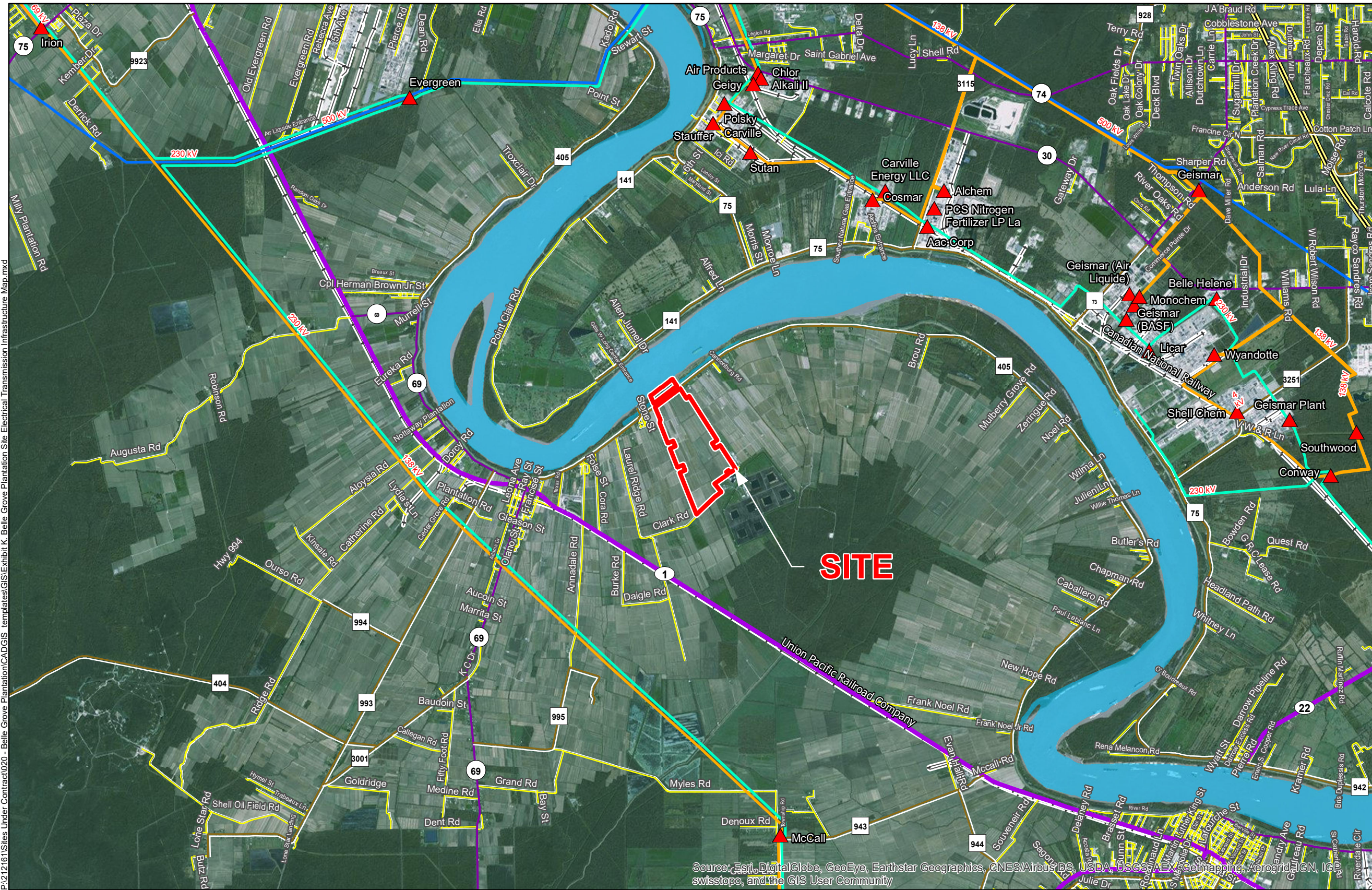
Belle Grove Site
Iberville Parish, LA

BRAC



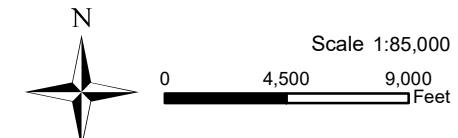
LEGEND

- Site Boundary (555.19 Ac. +/-)
- ▲ Substation
- Electric Transmission**
- 500 kV (Entergy)
- 230 kV (Entergy)
- 138 kV (Entergy)
- 69 kV
- Existing Roadway**
- Interstate
- 4-Lane State Highway
- Urban State Highway
- Rural State Highway
- Local Roads
- Railroad
- Waterbody



P:\212161\Sites Under Contract\020 - Belle Grove Plantation\CAD\GIS templates\GIS\Exhibit K. Belle Grove Plantation Site Electrical Transmission Infrastructure Map.mxd

General Notes:
 1. No attempt has been made by CSRS, Inc. to verify site boundary, title, actual legal ownership, deed restrictions, servitudes, easements, or other burdens on the property, other than that furnished by the client or his representative.
 2. Transportation data from 2013 TIGER datasets via U.S. Census Bureau at ftp://ftp2.census.gov/geo/tiger/TIGER2013.
 3. Utility information from visual inspection and/or the individual utility operators. Exact field location has not been determined by survey. The lines shown are an approximate representation only and may have been offset for depiction purposes.
 4. Aerial Imagery from ESRI Online basemaps.



Baton Rouge Area Chamber.
 Date: 4/11/2017
 Project Number: 212161
 Drawn By: AMB
 Checked By: JAY

CSRS
 IMAGINE SHAPE DELIVER
 6767 Perkins Road Suite 200 Baton Rouge, LA 70808
 Telephone: 225 769-0546 Fax: 225 767-0060
 www.csrsllc.com

Source: Esri, DigitalGlobe, GeoEye, Earthstar Geographics, CNES/Airbus DS, USDA, USGS, AeroGRID, IGN, IGA, swisstopo, and the GIS User Community