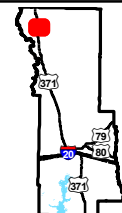
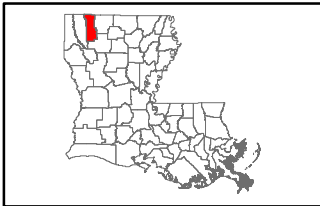


Exhibit Z. North Webster Parish Industrial District Site All Utilities Infrastructure Map

All Utilities Map
NWPID Site
Webster Parish, LA

NWPID



Webster Parish

Legend

- Site Boundary (61.33 Acres +/-)
- Existing Telecommunications
- Telecom Central Office
- Existing North Webster Parish Industrial District Sewer Line
- Existing Town of Cullen 8" Water Line
- Existing North Webster Parish Industrial District 8" Water Line

Existing Electric Transmission

138 kV

Natural Gas Distribution

4" Gas Line

8" Gas Line

Existing Entergy Electric Distribution

Single Phase

2 Phase

3 Phase

Existing Roadway

US Highway

Local Roads



NORTH WEBSTER PARISH
INDUSTRIAL DISTRICT

Date: 10/26/2015

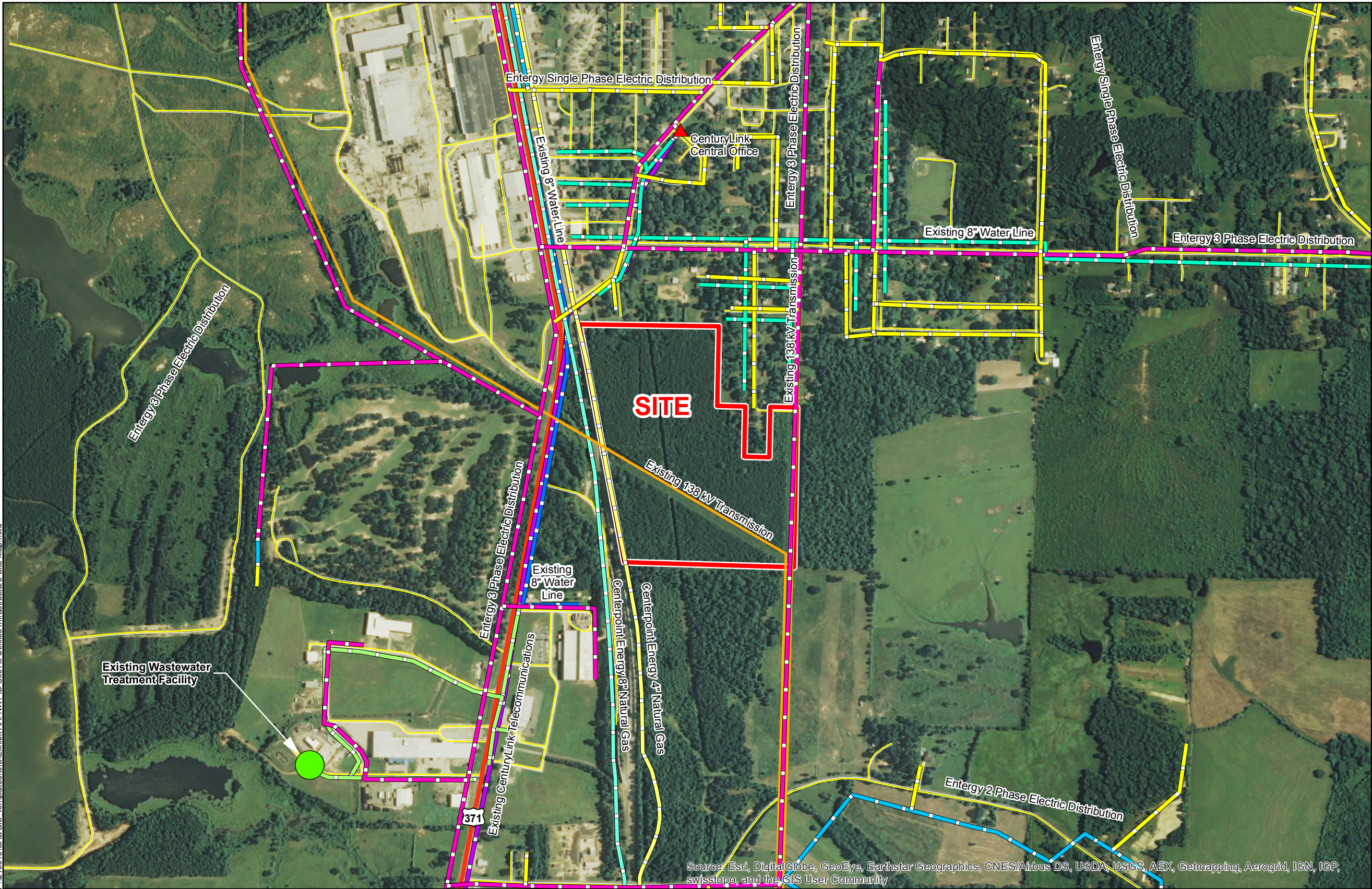
Project Number: 215040

Drawn By: AMB

Checked By: JAY

CSRS
IMAGINE SHAPE DELIVER

6767 Perkins Road Suite 200 Baton Rouge, LA 70808
Telephone: 225 769-0546 Fax: 225 767-0060
www.csrsonline.com



General Notes:

1. No attempt has been made by CSRS, Inc. to verify site boundary, title, actual legal ownership, deed restrictions, servitudes, easements, or other burdens on the property, other than that furnished by the client or his representative.
2. Transportation data from 2013 TIGER datasets via U.S. Census Bureau at ftp2.census.gov/geo/tiger/TIGER2013.
3. Utility information from visual inspection and/or the individual utility operators. Exact field location has not been determined by survey. The lines shown are an approximate representation only and may have been offset for depiction purposes.
4. Aerial Imagery from 2015 Esri World Imagery and may not reflect current ground conditions.



Scale 1:10,000
0 530 1,060 Feet

Source: Esri, DigitalGlobe, GeoEye, Earthstar Geographics, CNES/Airbus DS, USDA, USGS, AEX, Getmapping, Aerogrid, IGN, IGP, swisstopo, and the GIS User Community