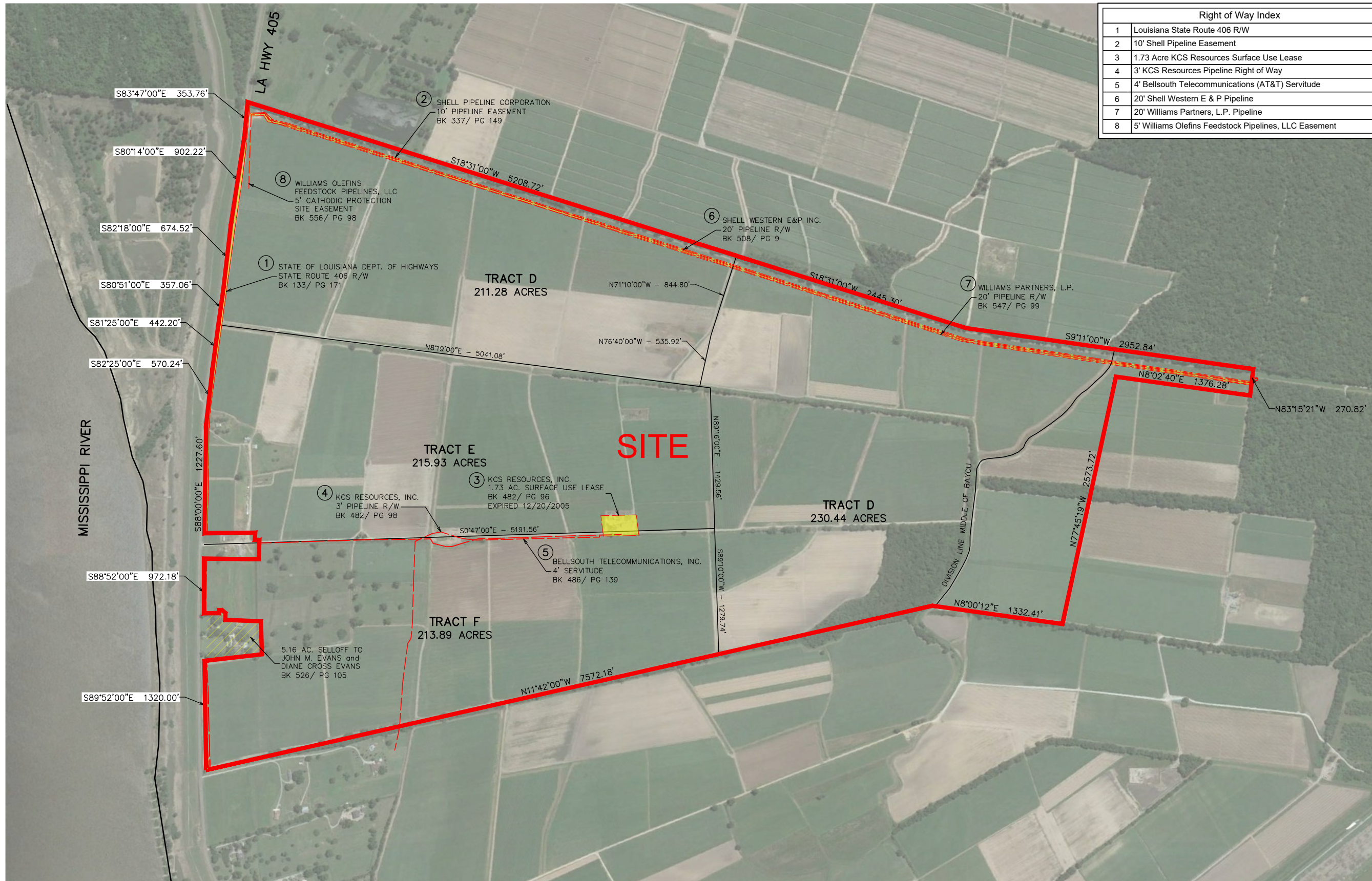


Exhibit F. Claiborne Site Property Rights Exhibit

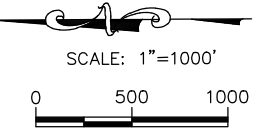


Right of Way Index	
1	Louisiana State Route 406 R/W
2	10' Shell Pipeline Easement
3	1.73 Acre KCS Resources Surface Use Lease
4	3' KCS Resources Pipeline Right of Way
5	4' Bellsouth Telecommunications (AT&T) Servitude
6	20' Shell Western E & P Pipeline
7	20' Williams Partners, L.P. Pipeline
8	5' Williams Olefins Feedstock Pipelines, LLC Easement

Project:

Claiborne Site Iberville Parish, LA

Client:



Revisions:

#	Date	Description

Key Plan:

LEGEND

	SITE BOUNDARY
	935.59 AC. LESS 8.66 AC. (926.93 AC. ±)
	R/W, EASEMENTS, & SERVITUDES (19.25 AC. ±)

Sheet Title:

Property Rights Exhibit

Date:	January 25, 2016
Project Number:	212161
Drawn By:	JAY
Checked By:	JAY
Sheet:	

P:\212161\Sites Under Contract\016 - Claiborne\CAD\GIS_templates\CAD\10102016 Survey Exhibits.dwg Oct 10, 2016 - 11:48am

GENERAL NOTES:

- No attempt has been made by CSRS, Inc. to verify title, actual legal ownership, deed restrictions, servitudes, easements, or other burdens on the property, other than that furnished by the client or his representative.
- Depicted exhibit based on a plan showing the subdivision of the front portion of Claiborne Plantation in Iberville Parish and Chatham Plantation in Ascension Parish, made by Frank H. Waddill, Civil Engineer, dated November 25, 1923.
- This is not a property boundary survey and is not intended to meet the Louisiana standards of practice for property boundary surveys. Bearings and distances of tracts were obtained from document referenced above.
- The coordinate system used is NAD83 Louisiana State Plane South (US feet). Coordinates were derived by overlaying the boundary on an aerial photograph and are within 100' of true location.
- Rights of Way, Easements, and Servitudes shown hereon have not been verified in the field and any shown are for general locative information only.