

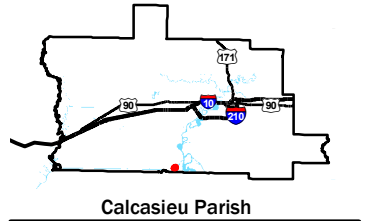
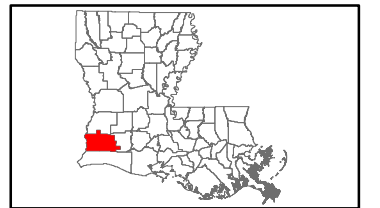


## Exhibit W. West Calcasieu Port Site Soils Conservation Service Map

# West Calcasieu Port Site Soils Conservation Service Map

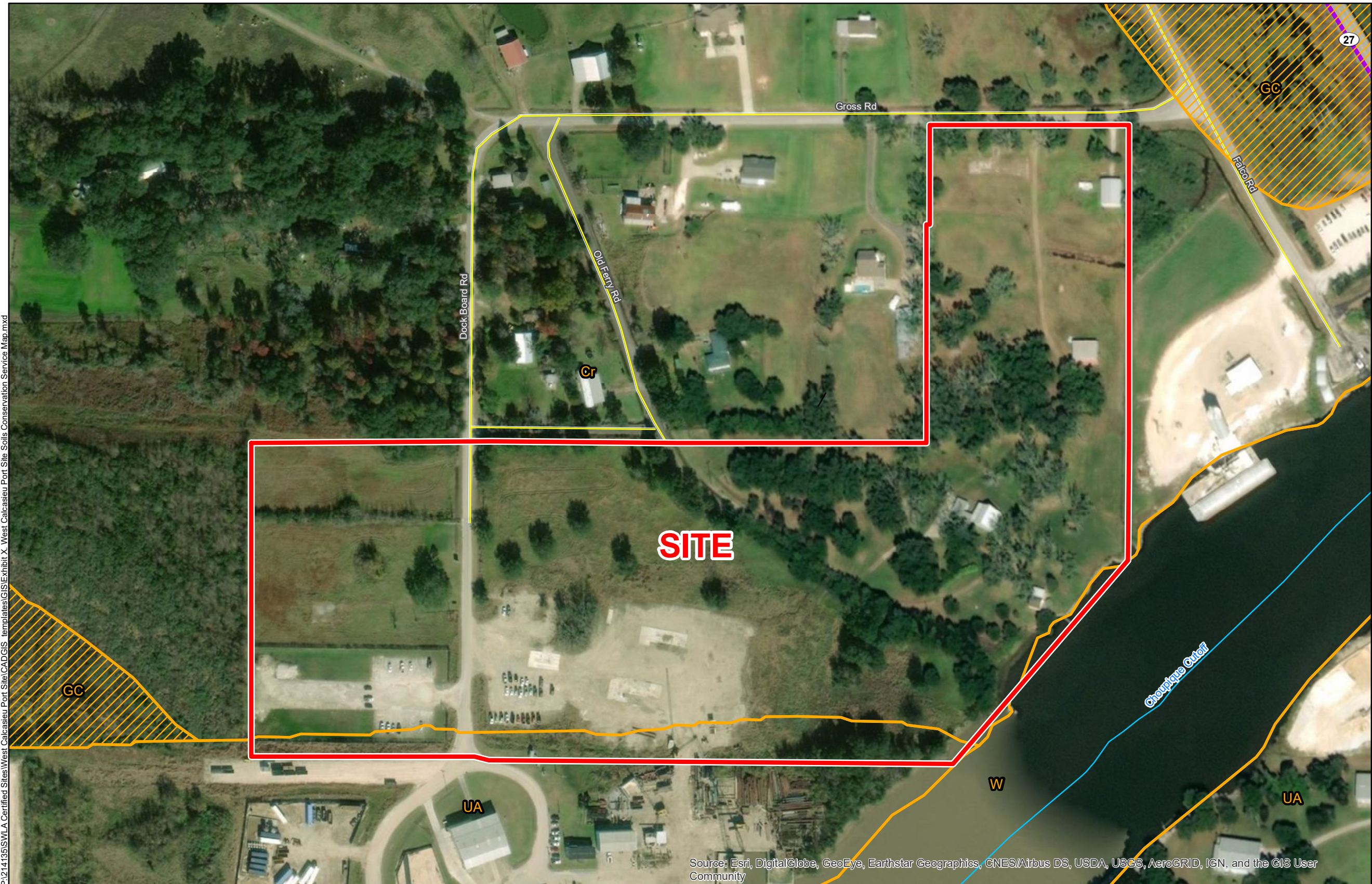
West Calcasieu Port Site  
Calcasieu Parish, LA

SWLA



LEGEND

- Site Boundary
- Soil Type**
- Cr - Crowley-Vidrine complex, 0 to 1 percent slopes (5% hydric)
- GC - Gentilly muck, 0 to 0.5 percent slopes, very frequently flooded 100% hydric)
- UA - Udifluvents, 1 to 20 percent slopes (15% hydric)
- W - Water
- Existing Roadway
- Local Roads



Source: Esri, DigitalGlobe, GeoEye, Earthstar Geographics, CNES/Airbus DS, USDA, USGS, AeroGRID, IGN, and the GIS User Community

- General Notes:
1. No attempt has been made by CSRS, Inc. to verify site boundary, title, actual legal ownership, deed restrictions, servitudes, easements, or other burdens on the property, other than that furnished by the client or his representative.
  2. Transportation data from 2013 TIGER datasets via U.S. Census Bureau at [ftp2.census.gov/geo/tiger/TIGER2013](http://ftp2.census.gov/geo/tiger/TIGER2013).
  3. Soils data from USDA SSURGO website: <http://websoilsurvey.sc.egov.usda.gov/App/WebSoilSurvey.aspx>.
  4. 2015 aerial imagery from USDA-APFO National Agricultural Inventory Project (NAIP) and may not reflect current ground conditions.



Date: 10/31/2019  
Project Number: 214135  
Drawn By: BNF  
Checked By: EEB



P:\214135\SWLA Certified Sites\West Calcasieu Port Site\CAD\GIS templates\GIS\Exhibit X - West Calcasieu Port Site Soils Conservation Service Map.mxd