

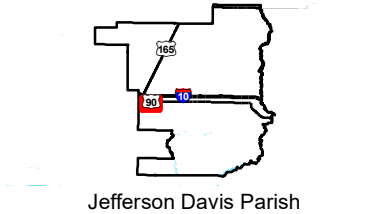
Exhibit T. T.O. Allen Industrial Park South Soils Conservation Service Map



T.O. Allen Industrial Park South Soils Conservation Service Map

NRCS Soils Map
Allen Estates South Site
Jefferson Davis Parish, LA

One Acadiana



Jefferson Davis Parish

LEGEND

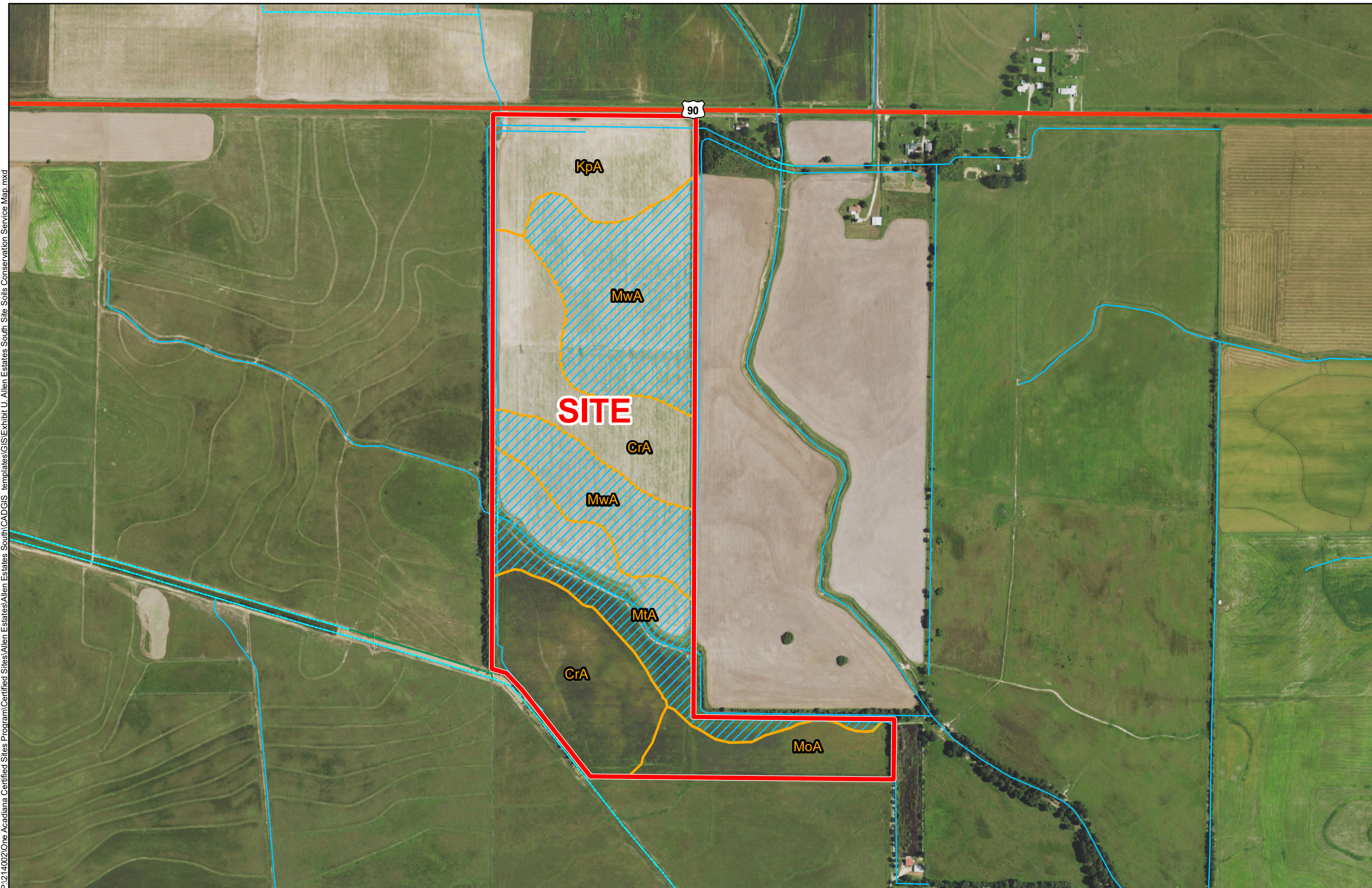
■ Site Boundary (142.59 Ac. ±)

Soil Data

- CrA - Crowley-Vidrine complex, 0 to 1 percent slopes (4% hydric)
- KpA - Kaplan silt loam, 0 to 1 percent slopes (5% hydric)
- MoA - Edgerly loam, 0 to 1 percent slopes, rarely flooded (9% hydric)
- MTA - Mowata silt loam, 0 to 1 percent slopes, rarely flooded (95% hydric)
- MwA - Mowata-Vidrine complex, 0 to 1 percent slopes, rarely flooded (65% hydric)

Existing Roadway

- US Highway
- Canal or Ditch
- Connector
- Stream or River



P:\214002\One Acadiana Certified Sites Program\Certified Sites\Allen Estates\Allen Estates South\CAD\GIS templates\GIS\Exhibit U, Allen Estates South Site Soils Conservation Service Map.mxd

General Notes:

1. No attempt has been made by CSRS, Inc. to verify site boundary, title, actual legal ownership, deed restrictions, servitudes, easements, or other burdens on the property, other than that furnished by the client or his representative.
2. Transportation data from 2013 TIGER datasets via U.S. Census Bureau at <ftp://ftp2.census.gov/geo/tiger/TIGER2013>.
3. Soils data from USDA SSURGO website: <http://websoilsurvey.sc.egov.usda.gov/App/WebSoilSurvey.aspx>.
4. 2015 aerial imagery from USDA-APFO National Agricultural Inventory Project (NAIP) and may not reflect current ground conditions.



Scale 1:8,000
0 425 850 Feet



Date: 1/19/2017
Project Number: 214002
Drawn By: TMK
Checked By: JAY

CSRS
IMAGINE SHAPE DELIVER
6767 Perkins Road Suite 200 Baton Rouge, LA 70808
Telephone: 225 769-0546 Fax: 225 767-0060
www.csrsonline.com