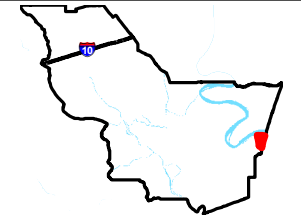
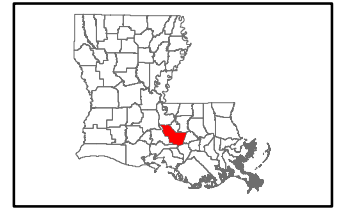


Exhibit N. Claiborne Site Telecommunications Infrastructure Map

Telecommunications Infrastructure
 Claiborne Site
 Iberville Parish, LA

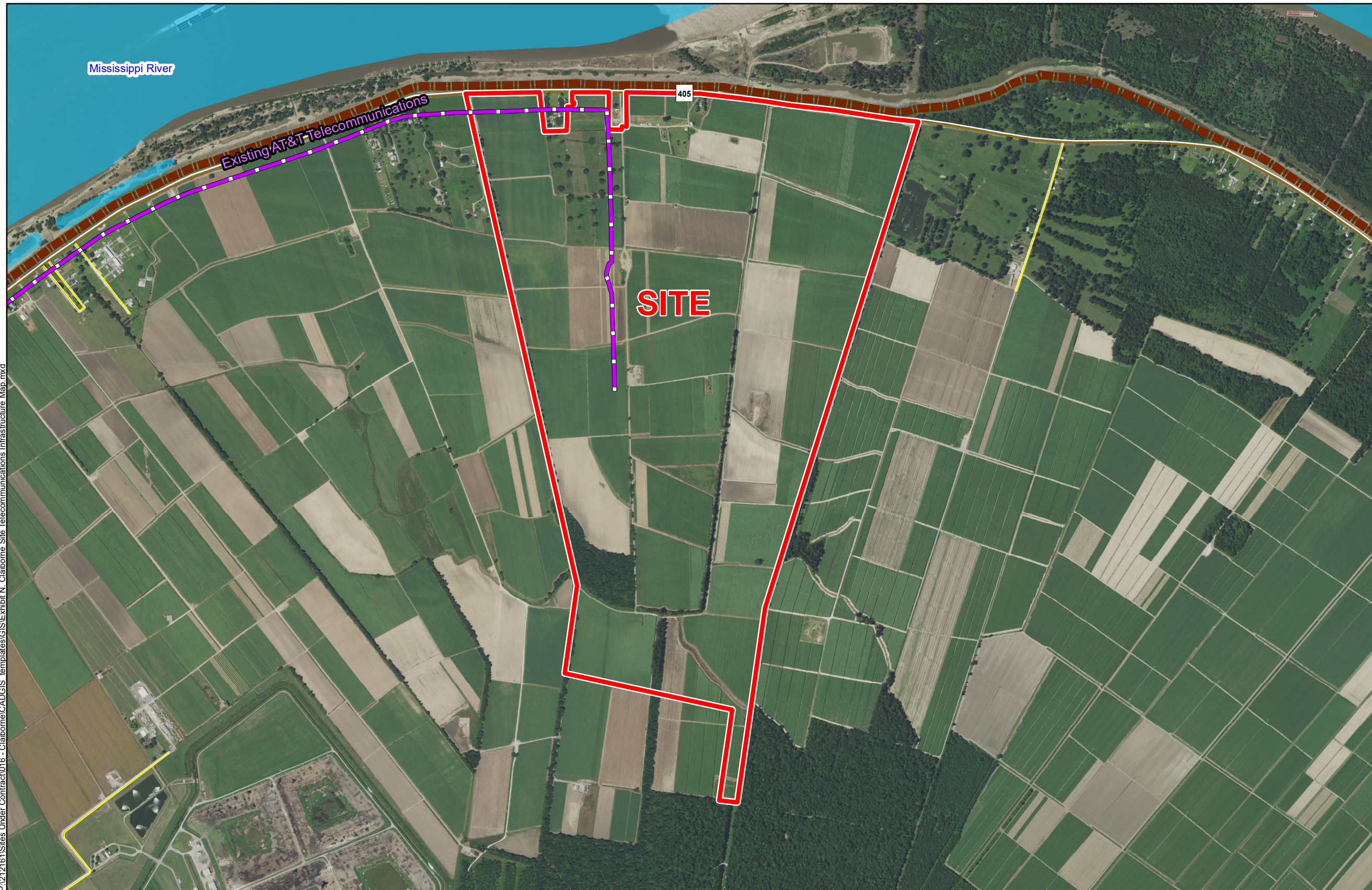
BRAC



Iberville Parish

LEGEND

- Site Boundary (926.93 Ac. +/-)
- Existing AT&T Telecommunications
- Existing Roadway**
- Rural State Highway
- Local Roads
- Levee
- Waterbody



P:\212161\Sites Under Contract\016 - Claiborne\CAD\GIS - templates\GIS\Exhibit N. Claiborne Site Telecommunications Infrastructure Map.mxd

General Notes:

1. No attempt has been made by CSRS, Inc. to verify site boundary, title, actual legal ownership, deed restrictions, servitudes, easements, or other burdens on the property, other than that furnished by the client or his representative.
2. Transportation data from 2013 TIGER datasets via U.S. Census Bureau at <ftp://ftp2.census.gov/geo/tiger/TIGER2013>.
3. Utility information from visual inspection and/or the individual utility operators. Exact field location has not been determined by survey. The lines shown are an approximate representation only and may have been offset for depiction purposes.
4. 2015 aerial imagery from USDA-APFO National Agricultural Inventory Project (NAIP) and may not reflect current ground conditions.



Scale 1:18,080
 0 970 1,940 Feet



Date: 10/10/2016
 Project Number: 212161
 Drawn By: AMB
 Checked By: JAY

CSRS
 IMAGINE SHAPE DELIVER
 6767 Perkins Road Suite 200 Baton Rouge, LA 70808
 Telephone: 225 769-0546 Fax: 225 767-0060
www.csronline.com