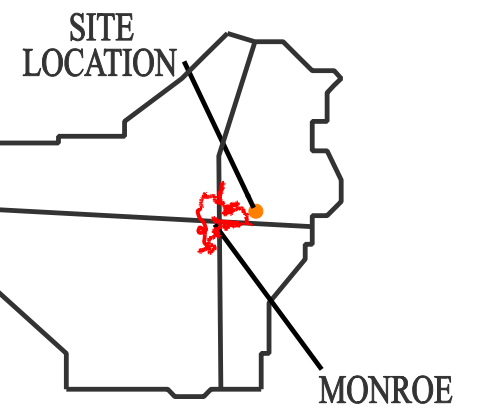


EXHIBIT I, PETTY SOUTH SITE EXISTING NATURAL GAS INFRASTRUCTURE MAP

OUACHITA
PARISH



LEGEND

PROPERTY BOUNDARY

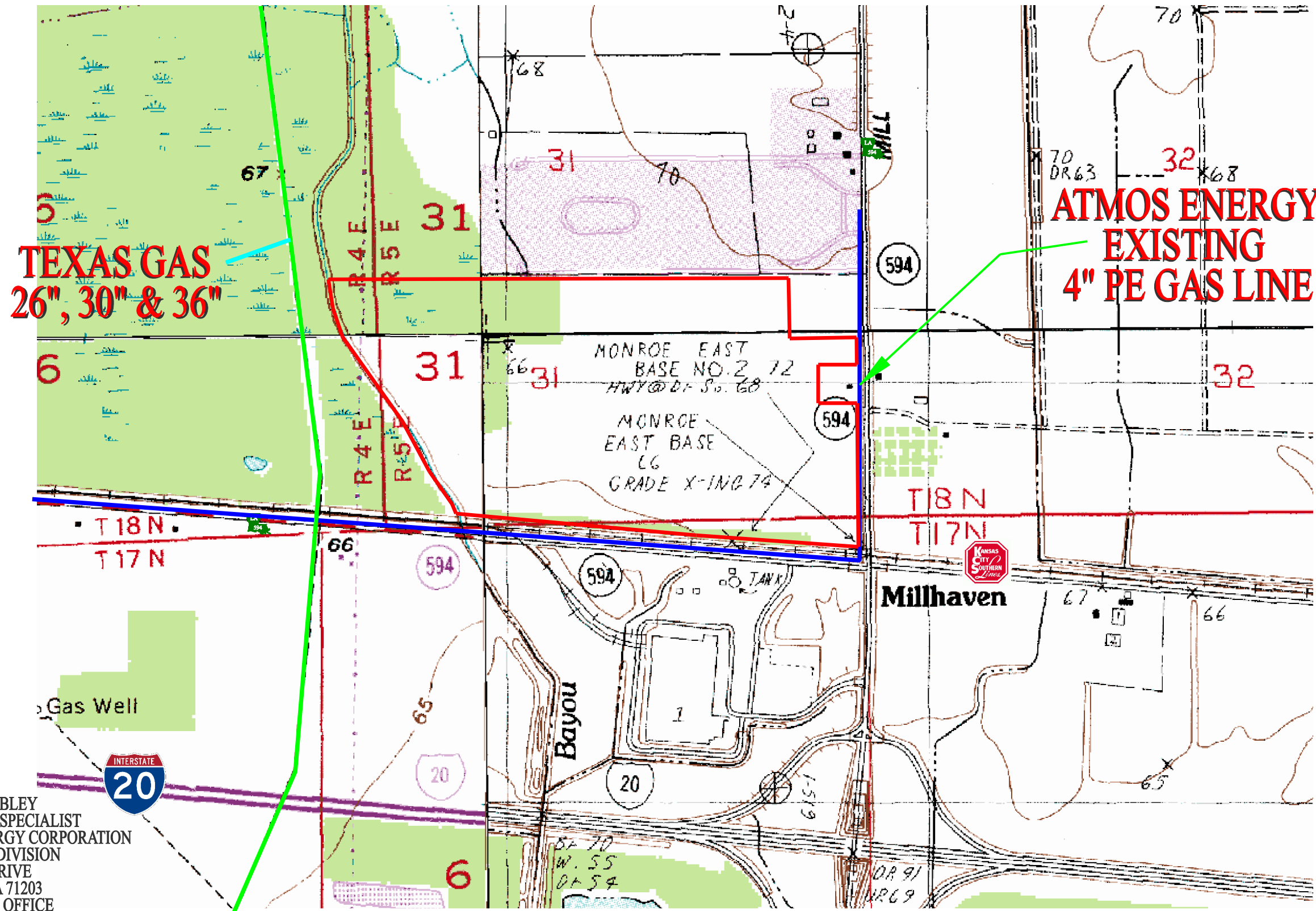


ECONOMIC ALLIANCE

NELA

LED LOUISIANA ECONOMIC DEVELOPMENT

Prepared By
DENMON
ENGINEERING
ENGINEERS AND SURVEYORS
114 VENABLE LANE
MONROE, LOUISIANA 71203



TEXAS GAS
26", 30" & 36"

ATMOS ENERGY
EXISTING
4" PE GAS LINE

CONTACT:
BOBBY J MOBLEY
SR PROJECT SPECIALIST
ATMOS ENERGY CORPORATION
LOUISIANA DIVISION
800 DELTA DRIVE
MONROE, LA 71203
318-651-6305 OFFICE
318-669-1724 MOBILE
BOBBY.MOBLEY@ATMOSENERGY.COM
WWW.ATMOSENERGY.COM

SOURCE: USGS TOPOGRAPHIC QUADRANGLE: CREW LAKE,
SWARTZ, MONROE SOUTH, & MONROE NORTH

