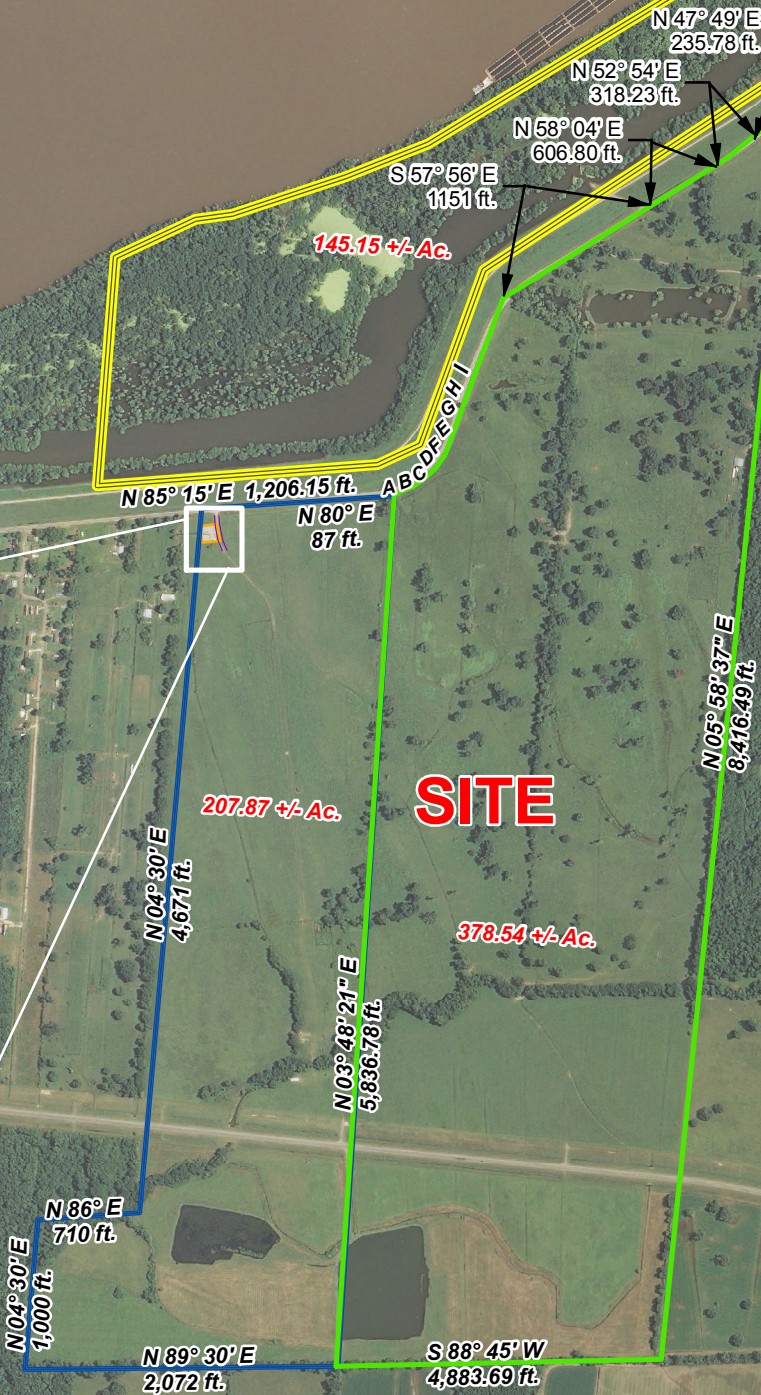


Exhibit E. Angel Ranch Site Property Boundary Aerial Exhibit

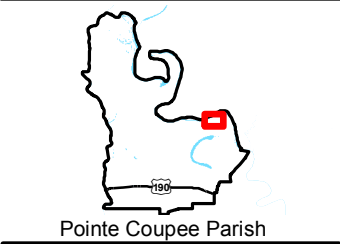
P:\212161\Sites Under Contract\012 - Angel Ranch (Raindrop)\CADGIS templates\GIS\Rev Exhibit E Angel Ranch Site Property Boundary Aerial Survey.mxd

Course	Bearing	Distance
A-B	N 65°40' E	134.47 ft.
B-C	N 55°18' E	102.75 ft.
C-D	N 45°50' E	102.43 ft.
D-E	N 36°43' E	102.40 ft.
E-F	N 27°44' E	102.33 ft.
F-G	N 19°12' E	101.28 ft.
G-H	N 16°09' E	100.16 ft.
H-I	N 19°23' E	391.21 ft.



Boundary Aerial Exhibit  
Angel Ranch Site  
Pointe Coupee Parish, LA

BRAC



LEGEND

- Parcel based on Toxie Craft Survey (see note 2)
- Parcel based on S.N. Garrett Survey (see note 2)
- Parcel based on assessor parcel data and has not been field verified

General Notes:  
1. No attempt has been made by CSRS, Inc. to verify title, actual legal ownership, deed restrictions, servitudes, easements, or other burdens on the property, other than that furnished by the client or his representative.  
2. Depicted exhibit based on survey by Toxie Craft October 23, 1973 and survey by S.N. Garrett March 14, 1940 and may not be shown to scale.  
3. Verizon Tower Site Map included in "Exhibit A. Angel Ranch Site Partial Title Abstract."



Baton Rouge Area Chamber.

Date:	3/3/2015
Project Number:	212161.20.012
Drawn By:	MAT
Checked By:	TMG

CSRS  
IMAGINE SHAPE DELIVER

6767 Perkins Road Suite 200 Baton Rouge, LA 70808  
Telephone: 225 769-0546 Fax: 225 767-0060  
www.csrsonline.com