

Exhibit B.

Crosspoint North Site Oblique Aerial Photo Map

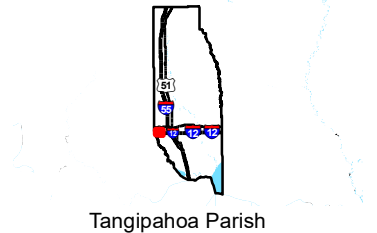
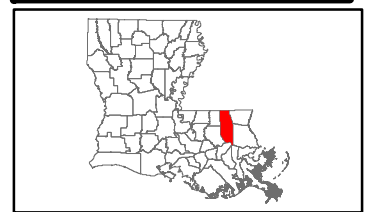


GREATER NEW ORLEANS
INC
REGIONAL ECONOMIC DEVELOPMENT

Crosspoint North Site Oblique Aerial Photo Map

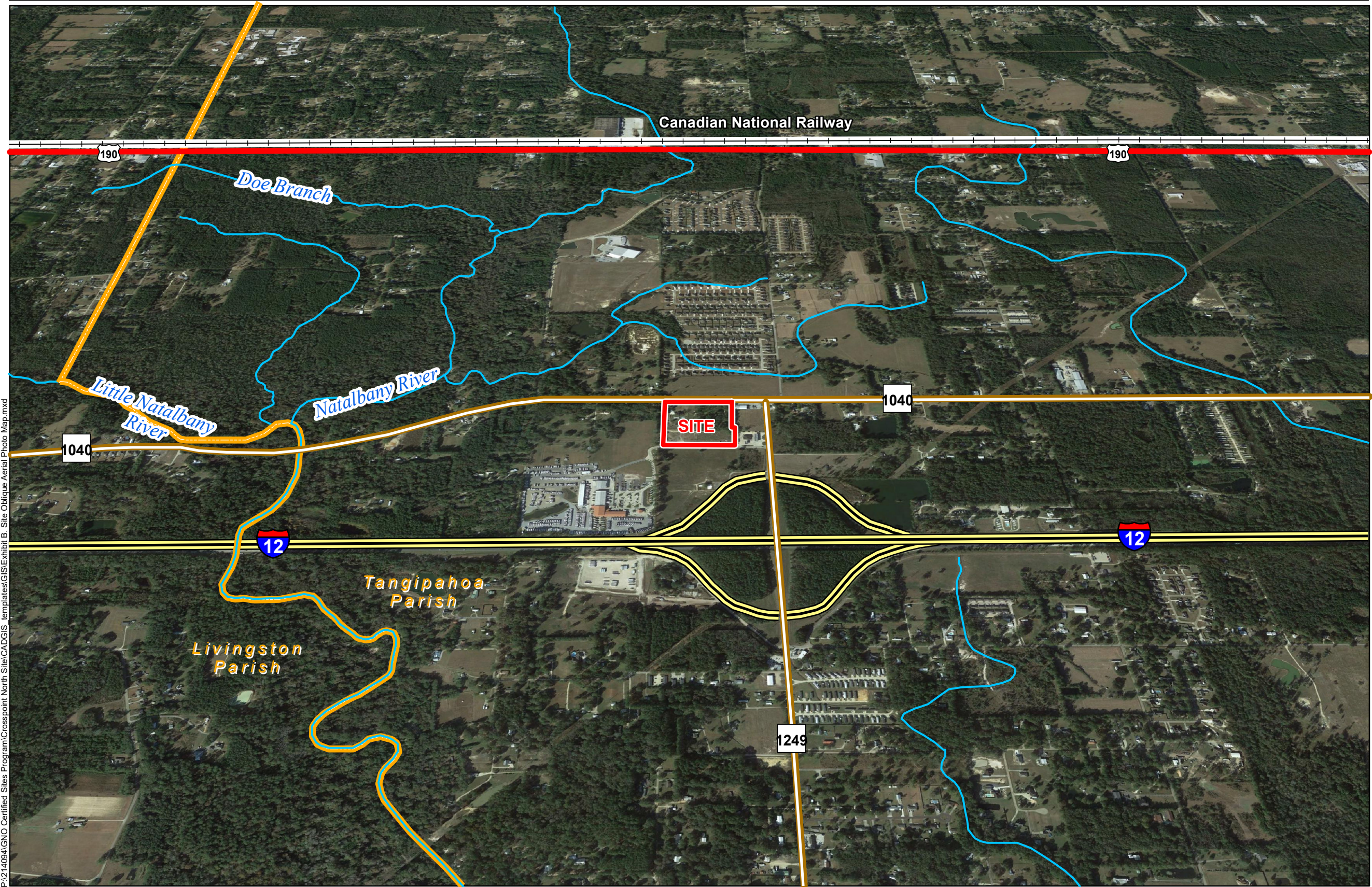
Crosspoint North Site
Tangipahoa Parish, LA

GNO



LEGEND

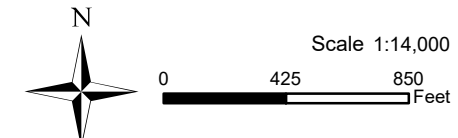
- Site Boundary (12.74 Acres ±)
- Parish Boundary
- Existing Roadway**
 - Interstate
 - US Highway
 - Rural State Highway
 - Local Roads
 - Railroad
 - Stream



P:\214094\GNO Certified Sites Program\Crosspoint North Site\CADGIS templates\GIS\Exhibit B_Site Oblique Aerial Photo Map.mxd

General Notes:

- No attempt has been made by CSRS, Inc. to verify site boundary, title, actual legal ownership, deed restrictions, servitudes, easements, or other burdens on the property, other than that furnished by the client or his representative.
- Transportation data from 2013 TIGER datasets via U.S. Census Bureau at [ftp://ftp2.census.gov/geo/tiger/TIGER2013](http://ftp2.census.gov/geo/tiger/TIGER2013).
- 2015 aerial imagery from USDA-APFO National Agricultural Inventory Project (NAIP) and may not reflect current ground conditions.



Date: 1/13/2021
Project Number: 214094
Drawn By: SEW
Checked By: EEB

