

Exhibit R. Terre Haute Development Telecommunications Infrastructure Map

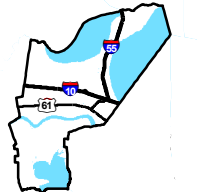


GREATER NEW ORLEANS
INC
REGIONAL ECONOMIC DEVELOPMENT

Terre Haute Development Telecommunications Infrastructure Map

Terre Haute Development
St. John the Baptist
Parish, LA

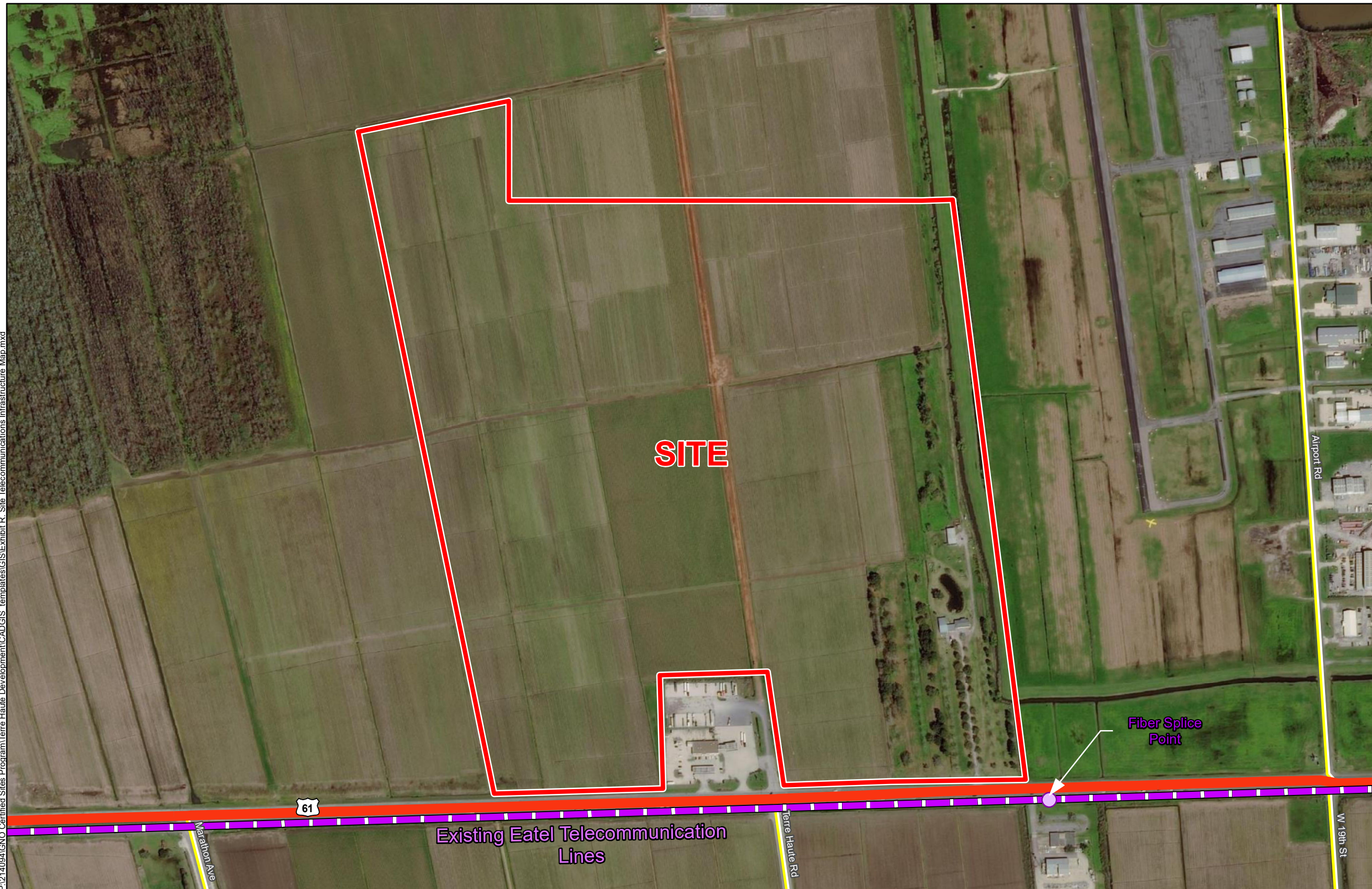
GNO



St. John the Baptist Parish

LEGEND

-  Existing Eatel Telecommunications Line
-  Site Boundary (185.5 Ac.±)
- Existing Roadway**
-  US Highway
-  Local Roads



P:\214094\GNO Certified Sites Program\Terre Haute Development\CAD\GIS templates\GIS\Exhibit R_Site Telecommunications Infrastructure Map.mxd



Date: 2/11/2021
Project Number: 214094
Drawn By: SEW
Checked By: EEB

General Notes:

1. No attempt has been made by CSRS, Inc. to verify site boundary, title, actual legal ownership, deed restrictions, servitudes, easements, or other burdens on the property, other than that furnished by the client or his representative.
2. Transportation data from 2013 TIGER datasets via U.S. Census Bureau at <ftp://ftp2.census.gov/geo/tiger/TIGER2013>.
3. 2015 aerial imagery from USDA-APFO National Agricultural Inventory Project (NAIP) and may not reflect current ground conditions.



Scale 1:6,000
0 320 640 Feet

