

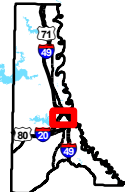
Exhibit Q. Hunter Industrial Park Roadway Transportation Infrastructure Map



Hunter Industrial Park Roadway Transportation Infrastructure Map

Hunter Industrial Park
Caddo Parish, LA

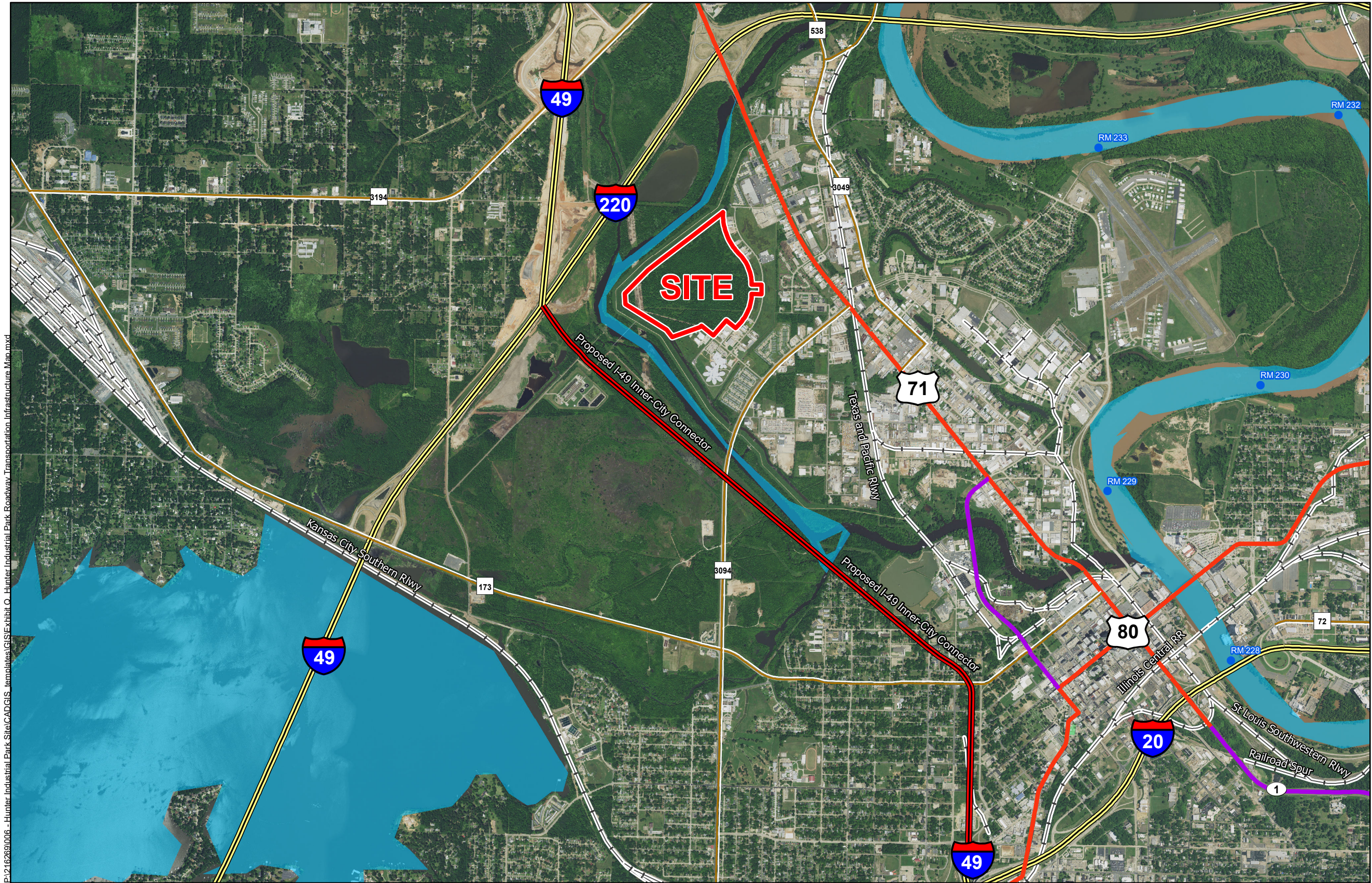
NLEP



Caddo Parish

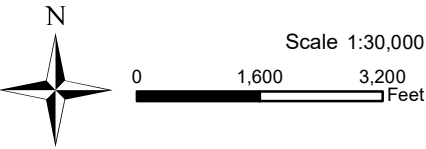
LEGEND

- Site Boundary
- Proposed I-49 Inner-City Connector
- River Mile Marker
- Existing Roadway
 - Interstate
 - US Highway
 - 4-Lane State Highway
 - Rural State Highway
 - Railroad
 - Waterbody



P:\216269\006 - Hunter Industrial Park Site\CADDGIS Templates\GIS\Exhibit O - Hunter Industrial Park Roadway Transportation Infrastructure Map.mxd

General Notes:
1. No attempt has been made by CSRS, Inc. to verify site boundary, title, actual legal ownership, deed restrictions, servitudes, easements, or other burdens on the property, other than that furnished by the client or his representative.
2. Transportation data from 2013 TIGER datasets via U.S. Census Bureau at ftp2.census.gov/geo/tiger/TIGER2013.
3. 2015 aerial imagery from USDA-APFO National Agricultural Inventory Project (NAIP) and may not reflect current ground conditions.



north louisiana
economic partnership

Date: 7/18/2018
Project Number:
Drawn By: EEB
Checked By: TMK

CSRS
IMAGINE SHAPE DELIVER
6767 Perkins Road Suite 200 Baton Rouge, LA 70808
Telephone: 225 769-0546 Fax: 225 767-0060
www.csrsonline.com