

# Exhibit I. Hornsby Industrial Park Wetlands & Cultural Encumbrances



# Hornsby Industrial Park Wetlands & Cultural Encumbrances

Hornsby Industrial Park  
Livingston Parish, LA

BRAC

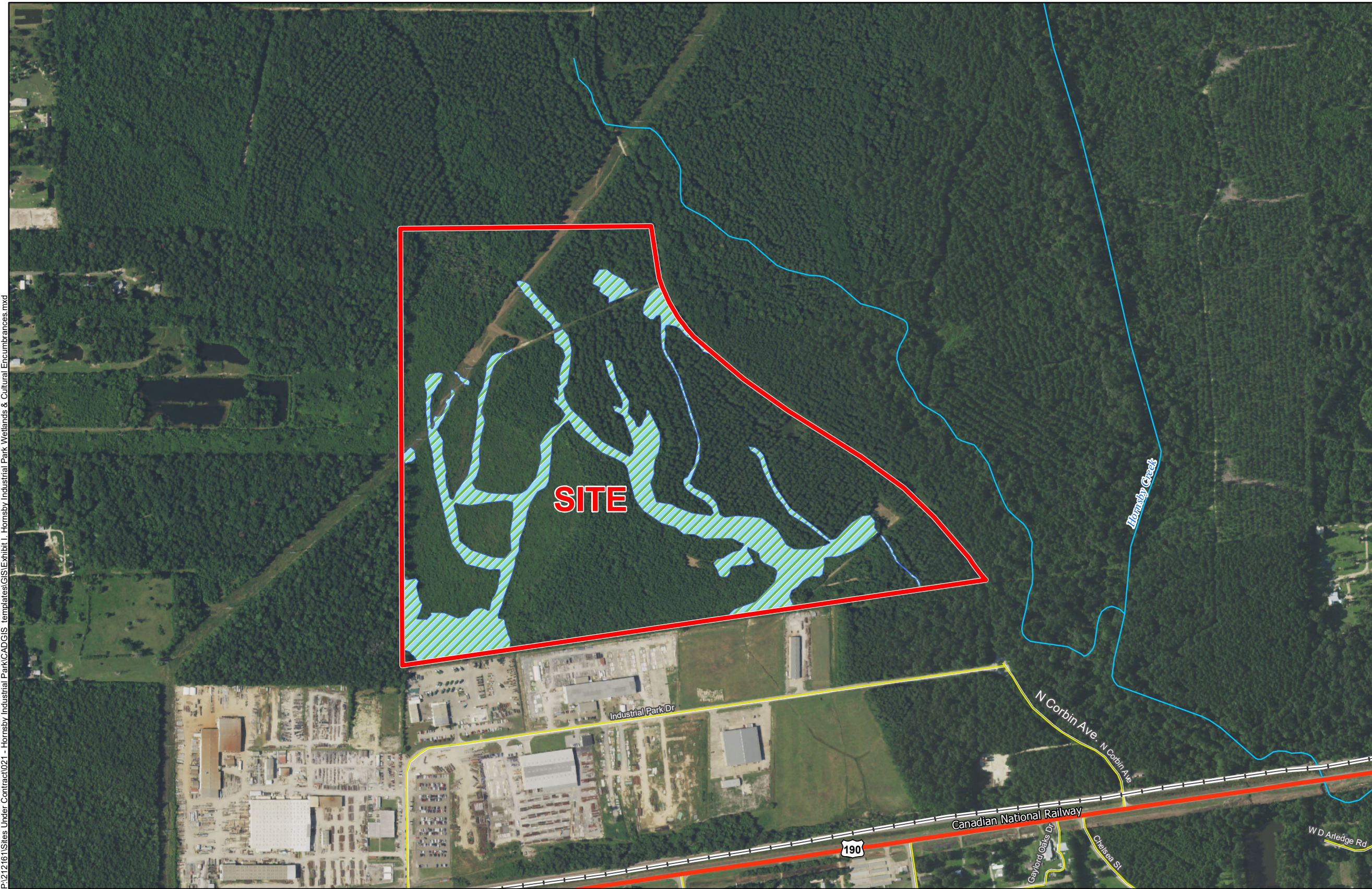


Livingston Parish

LEGEND

- Site Boundary
- Wetlands (21.15 Ac. ±)
- Existing Roadway**
- US Highway
- Local Roads
- Railroad
- Stream

P:\212161\Sites Under Contract\021 - Hornsby Industrial Park\CAD\CIS\_templates\GIS\Exhibit I - Hornsby Industrial Park Wetlands & Cultural Encumbrances.mxd



Site Details

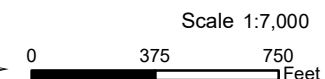
Appx. Site Size:	127.25 Ac. ±
Wetlands:	21.15 Ac. ±
Cultural Area:	0.00 Ac. ±



Date:	2/8/2018
Project Number:	212161
Drawn By:	TMK
Checked By:	TMG

General Notes:

1. No attempt has been made by CSRS, Inc. to verify site boundary, title, actual legal ownership, deed restrictions, servitudes, easements, or other burdens on the property, other than that furnished by the client or his representative.
2. Transportation data from 2013 TIGER datasets via U.S. Census Bureau at <ftp://ftp2.census.gov/geo/tiger/TIGER2013>.
3. 2015 aerial imagery from USDA-APFO National Agricultural Inventory Project (NAIP) and may not reflect current ground conditions.
4. Wetlands data provided by Pangaea Conservation and Compliance, LLC based on a Wetland Delineation Data Report, Hornsby 127.25-Acre Property Livingston Parish, Louisiana dated September 2017.
5. Negative cultural area findings based on A Phase I Cultural Resources Survey For the Proposed Hornsby Industrial Park, Livingston Parish, Louisiana by TerraXplorations, Inc dated September 2017.



Scale 1:7,000



6767 Perkins Road Suite 200 Baton Rouge, LA 70808  
Telephone: 225 769-0546 Fax: 225 767-0060  
[www.csrsonline.com](http://www.csrsonline.com)