

# Exhibit V. The Lake at Madison Park Site National Wetlands Inventory Map

National Wetlands Inventory  
The Lakes at Madison Park Site  
St. Tammany Parish, LA

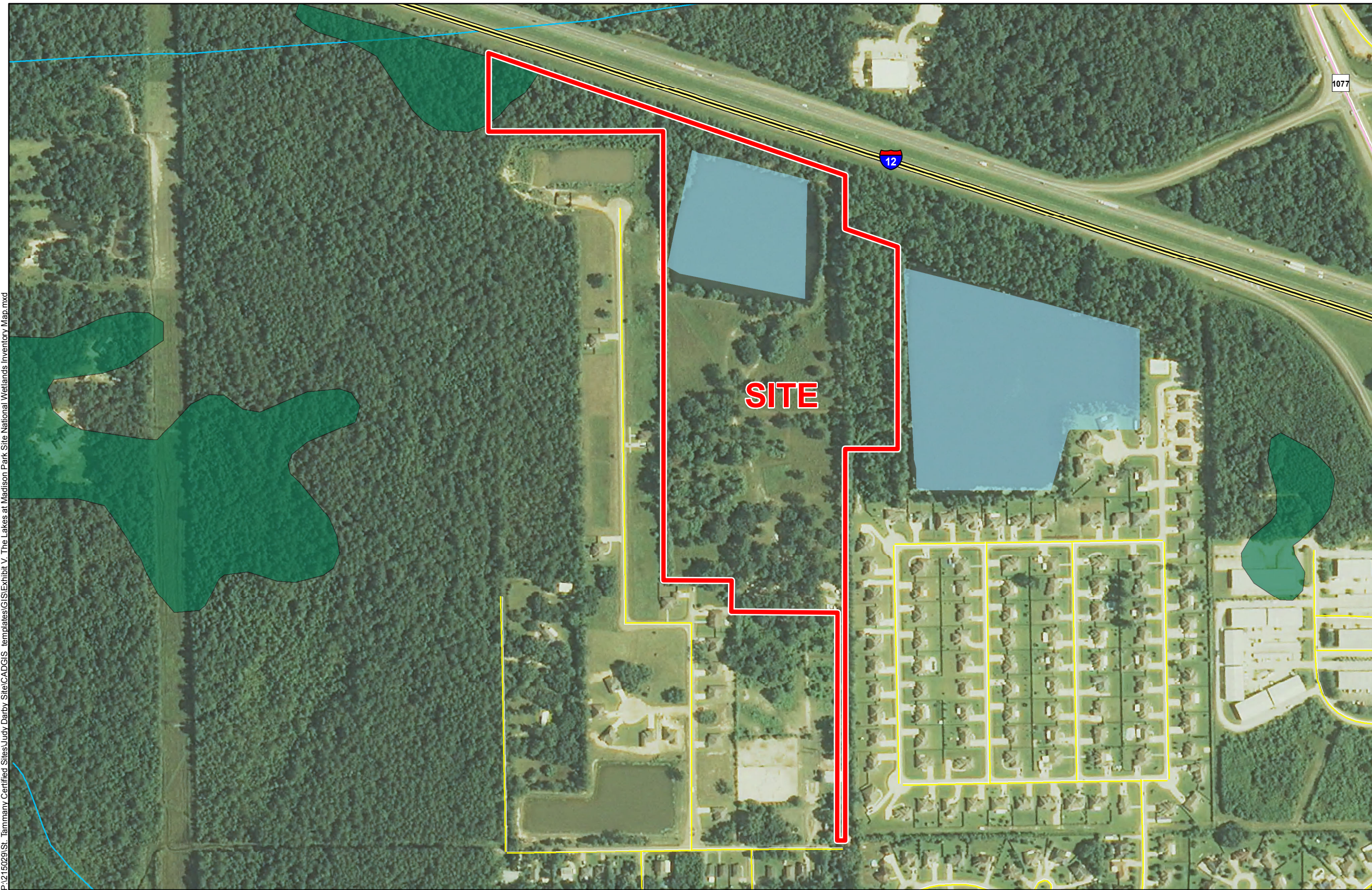
Darby Holdings, LLC



St. Tammany Parish

**LEGEND**

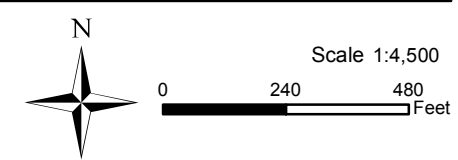
- Site Boundary (33.548 Acres +/- )
- Wetland Type**
- Freshwater Forested/Shrub Wetland
- Freshwater Pond
- Existing Roadway**
- Interstate
- Rural State Highway
- Local Roads
- Stream



**SITE**

P:\215029\St. Tammany Certified Sites\Judy Darby Site\CAD\GIS templates\GIS\Exhibit V. The Lakes at Madison Park Site National Wetlands Inventory Map.mxd

- General Notes:
1. No attempt has been made by CSRS, Inc. to verify site boundary, title, actual legal ownership, deed restrictions, servitudes, easements, or other burdens on the property, other than that furnished by the client or his representative.
  2. Transportation data from 2013 TIGER datasets via U.S. Census Bureau at <ftp://ftp2.census.gov/geo/tiger/TIGER2013>.
  3. National Wetlands Inventory (NWI) data current as of May 2014 as downloaded from [http://www.fws.gov/wetlands/Downloads/State/LA\\_wetlands.zip](http://www.fws.gov/wetlands/Downloads/State/LA_wetlands.zip).
  4. 2013 aerial imagery from USDA-APFO National Agricultural Inventory Project (NAIP) and may not reflect current ground conditions.



Date: 6/23/2015  
Project Number: 215029  
Drawn By: AMB  
Checked By: JAY

**CSRS**  
IMAGINE SHAPE DELIVER  
6767 Perkins Road Suite 200 Baton Rouge, LA 70808  
Telephone: 225 769-0546 Fax: 225 767-0060  
[www.csrsonline.com](http://www.csrsonline.com)