



# CENTURY TOWER OFFICE BUILDING

201 CENTURY VILLAGE BLVD., MONROE, LA 71203

- 100,000 Square Foot Building Built in 2017
- 1,000 - 15,238 Square Feet Available
- First Floor: 2,037 SF
- Third Floor: 15,238 SF – 1,000 SF minimum
- Full service space on the 2nd floor from 67 SF to 410 SF - Flexible terms
- Common Area Factor: 1.15
- Modern Classical Architecture, Gleaming Lobby, Retail, Restaurants and
- Spectacular Views
- Located off Highway 165 North across from CenturyLink Headquarters
- Located in Mixed-Use Development Century Village offering parks, bank, restaurants, shops and medical
- Base Rent \$24/SF NNN
- Tenant Improvement Allowance: \$60/USF
- Initial Space Planning at Landlord's Expense
- Major Tenants include IBM, Century Village Athletic Club, Romacelli Bistro e Vino, POUR Restaurant & Bar, and Regus Office Solutions

For more information, contact:

**Chris Susilovich** | 318.222.2244 (Office) | [csusilovich@vintagerealty.com](mailto:csusilovich@vintagerealty.com)

**Michael Berlin, Associate Broker** | 318.222.2244 (Office) | [mberlin@vintagerealty.com](mailto:mberlin@vintagerealty.com)

All Information Contained Herein Is Believed To Be Accurate, But Is Not Warranted And No Liability Of Errors Or Omissions Is Assured By Either The Property Owner Or Vintage Realty Company Or Its Agents And Employees. Prices As Stated Herein And Product Availability Is Subject To Change And/Or Sale Or Lease Without Prior Notice, And All Sizes And Dimensions Are Subject To Correction. Rev 2/2019



# CENTURY TOWER FOR LEASE

201 CENTURY VILLAGE BOULEVARD  
MONROE, LOUISIANA 71203



For more information, contact:

**Chris Susilovich** | 318.222.2244 (Office) | [csusilovich@vintagerealty.com](mailto:csusilovich@vintagerealty.com)

**Michael Berlin, Associate Broker** | 318.222.2244 (Office) | [mberlin@vintagerealty.com](mailto:mberlin@vintagerealty.com)

All Information Contained Herein Is Believed To Be Accurate, But Is Not Warranted And No Liability Of Errors Or Omissions Is Assured By Either The Property Owner Or Vintage Realty Company Or Its Agents And Employees. Prices As Stated Herein And Product Availability Is Subject To Change And/Or Sale Or Lease Without Prior Notice, And All Sizes And Dimensions Are Subject To Correction. 2/2019



# CENTURY TOWER FOR LEASE

201 CENTURY VILLAGE BOULEVARD  
MONROE, LOUISIANA 71203



## PROFESSIONAL MANAGEMENT AND LEASING BY VINTAGE REALTY COMPANY

Vintage Realty manages and leases properties in Louisiana, Arkansas and Texas. Retail, Commercial and Office space constitutes a large portion of our portfolio, with Vintage-managed office properties representing a prominent position in the North Louisiana market. Our team of highly motivated and experienced professionals are dedicated to improving performance at a reasonable cost.

## SOUTHERN LIFESTYLE DEVELOPMENT

Southern Lifestyle Development (SLD) developer of River Ranch in Lafayette, Louisiana, won a competitive process to design and develop Century Village. The "urban village" development enables residents to live, work and play in convenient proximity. While designed with CenturyLink and IBM employees in mind, Century Village is open to anyone. Imagine being able to walk to community events featuring local merchants, concerts, open-air markets and more. At Century Village, that will be a regular scene. Whether you live or work in Century Village, you'll be a part of a unique neighborhood that treasures the cherished company of neighbors and friends.



For more information, contact:

**Chris Susilovich** | 318.222.2244 (Office) | [csusilovich@vintagerealty.com](mailto:csusilovich@vintagerealty.com)

**Michael Berlin, Associate Broker** | 318.222.2244 (Office) | [mberlin@vintagerealty.com](mailto:mberlin@vintagerealty.com)

All Information Contained Herein Is Believed To Be Accurate, But Is Not Warranted And No Liability Of Errors Or Omissions Is Assured By Either The Property Owner Or Vintage Realty Company Or Its Agents And Employees. Prices As Stated Herein And Product Availability Is Subject To Change And/Or Sale Or Lease Without Prior Notice, And All Sizes And Dimensions Are Subject To Correction. 2/2019



# CENTURY TOWER FOR LEASE

201 CENTURY VILLAGE BOULEVARD  
MONROE, LOUISIANA 71203



For more information, contact:

**Chris Susilovich** | 318.222.2244 (Office) | [csusilovich@vintagerealty.com](mailto:csusilovich@vintagerealty.com)

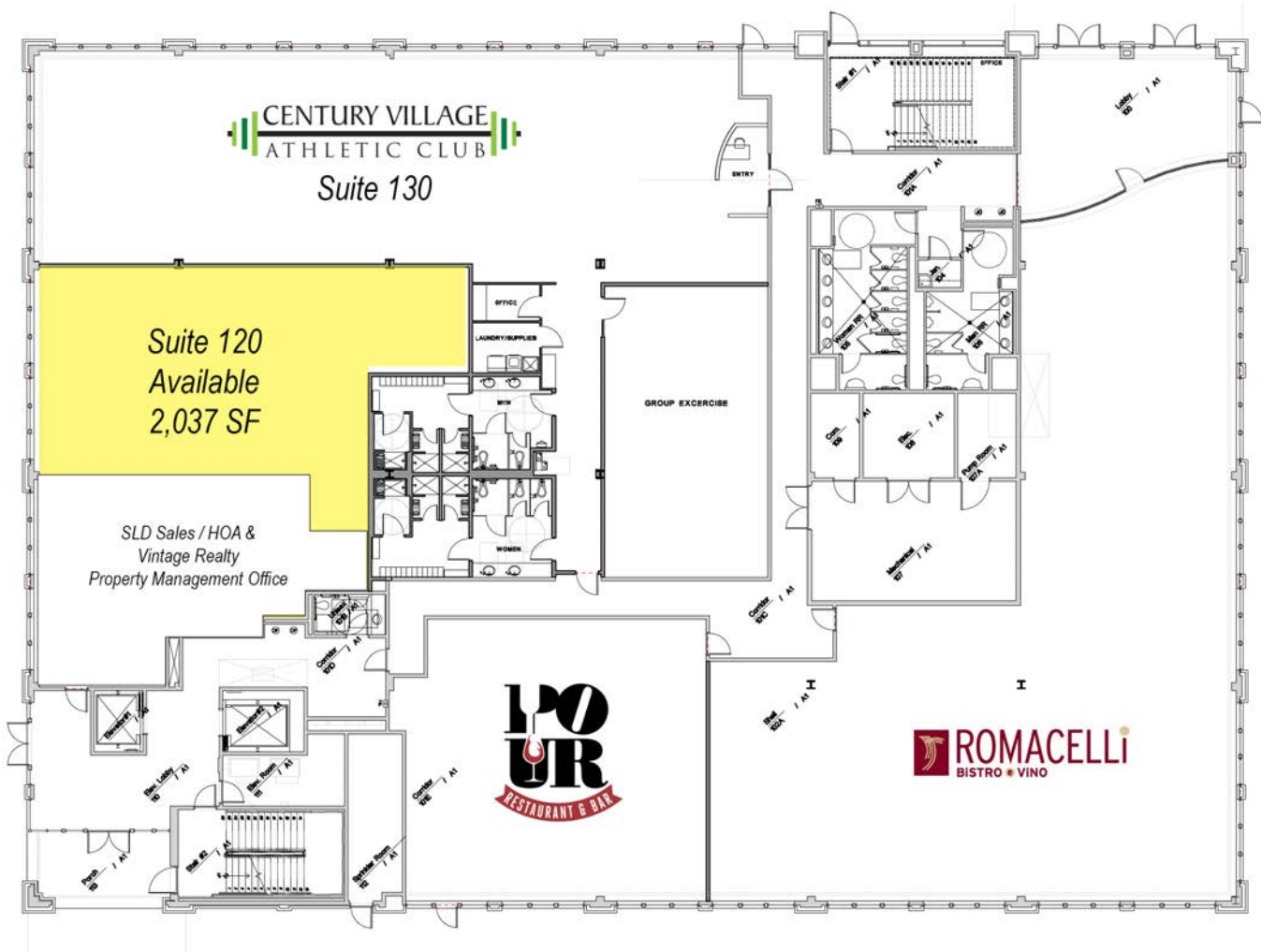
**Michael Berlin, Associate Broker** | 318.222.2244 (Office) | [mberlin@vintagerealty.com](mailto:mberlin@vintagerealty.com)

All Information Contained Herein Is Believed To Be Accurate, But Is Not Warranted And No Liability Of Errors Or Omissions Is Assured By Either The Property Owner Or Vintage Realty Company Or Its Agents And Employees. Prices As Stated Herein And Product Availability Is Subject To Change And/Or Sale Or Lease Without Prior Notice, And All Sizes And Dimensions Are Subject To Correction. 2/2019

# CENTURY TOWER FOR LEASE

201 CENTURY VILLAGE BOULEVARD  
MONROE, LOUISIANA 71203

## FIRST FLOOR - 2,037 SQ FT AVAILABLE



For more information, contact:

**Chris Susilovich** | 318.222.2244 (Office) | [csusilovich@vintagerealty.com](mailto:csusilovich@vintagerealty.com)

**Michael Berlin, Associate Broker** | 318.222.2244 (Office) | [mberlin@vintagerealty.com](mailto:mberlin@vintagerealty.com)

All Information Contained Herein Is Believed To Be Accurate, But Is Not Warranted And No Liability Of Errors Or Omissions Is Assured By Either The Property Owner Or Vintage Realty Company Or Its Agents And Employees. Prices As Stated Herein And Product Availability Is Subject To Change And/Or Sale Or Lease Without Prior Notice, And All Sizes And Dimensions Are Subject To Correction. 2/2019

# CENTURY TOWER FOR LEASE

201 CENTURY VILLAGE BOULEVARD  
MONROE, LOUISIANA 71203

## THIRD FLOOR - 15,238 SQ FT AVAILABLE (CAN BE SUBDIVIDED)



For more information, contact:

**Chris Susilovich** | 318.222.2244 (Office) | [csusilovich@vintagerealty.com](mailto:csusilovich@vintagerealty.com)

**Michael Berlin, Associate Broker** | 318.222.2244 (Office) | [mberlin@vintagerealty.com](mailto:mberlin@vintagerealty.com)

All Information Contained Herein Is Believed To Be Accurate, But Is Not Warranted And No Liability Of Errors Or Omissions Is Assured By Either The Property Owner Or Vintage Realty Company Or Its Agents And Employees. Prices As Stated Herein And Product Availability Is Subject To Change And/Or Sale Or Lease Without Prior Notice, And All Sizes And Dimensions Are Subject To Correction. 2/2019



# CENTURY TOWER FOR LEASE

201 CENTURY VILLAGE BOULEVARD  
MONROE, LOUISIANA 71203



## CHRIS SUSILOVICH

Chris Susilovich joined Vintage Realty Company in 2017 in their Commercial Brokerage and Leasing Division and is licensed by both the Louisiana Real Estate Commission and the Texas Real Estate Commission. Chris started his real estate career with Hortenstine Ranch Company in Dallas, TX, handling farm and ranch transactions throughout Texas.

Chris spent 11 years in Houston, TX as a business development executive, fundraiser and consultant prior to returning home to Shreveport with his family. While in Houston, he served as the Executive Director for Houston Safari Club and consulted for several organizations to help improve process efficiencies, develop strategic plans and enhance development practices. Chris' vast experience with a broad range of organizations and businesses has greatly strengthened his sphere of influence throughout Texas and Louisiana.

Chris is a graduate of Centenary College of Louisiana with a degree in Environmental Science and holds a Master's of Science from Stephen F. Austin State University. Chris is currently pursuing CCIM designation as a Commercial Investment Real Estate Institute Candidate member.

Chris is a driven and passionate individual when it comes to philanthropy and community service. He has been actively involved with such organizations as Noel United Methodist Church, CADA of Northwest Louisiana, Dream Hunt Foundation, First Tee of Northwest Louisiana and the Norwela Council of Boy Scouts of America. Chris is married to Sarah Susilovich and they have two children, son Charlie and daughter Kathryn.

Chris is engaged in all aspects of commercial real estate including investment (income producing), industrial, vacant land, agriculture, office, retail, and new development.



For more information, contact:

**Chris Susilovich** | 318.222.2244 (Office) | [csusilovich@vintagerealty.com](mailto:csusilovich@vintagerealty.com)

**Michael Berlin, Associate Broker** | 318.222.2244 (Office) | [mberlin@vintagerealty.com](mailto:mberlin@vintagerealty.com)

All Information Contained Herein Is Believed To Be Accurate, But Is Not Warranted And No Liability Of Errors Or Omissions Is Assured By Either The Property Owner Or Vintage Realty Company Or Its Agents And Employees. Prices As Stated Herein And Product Availability Is Subject To Change And/Or Sale Or Lease Without Prior Notice, And All Sizes And Dimensions Are Subject To Correction. 2/2019

# CENTURY TOWER FOR LEASE

201 CENTURY VILLAGE BOULEVARD  
MONROE, LOUISIANA 71203



## MICHAEL BERLIN

Michael Berlin joined Vintage Realty Company as a licensed commercial real estate associate broker in 2018. Prior to Vintage, Michael was affiliated with Coldwell Banker Commercial of Shreveport/Bossier City, Alliance Commercial Real Estate and Development where he was the Sponsoring Broker, and Stirling Properties.

Over his 12-year career, Michael has been active in all facets of the commercial real estate industry. He has extensive experience with a wide variety of local, regional, and national clientele that include the sale/leasing of retail, office (general/medical), land, and industrial properties. He has also been involved in the disposition and acquisition of several investment properties that include land, office, and industrial properties.

Michael is a former Commercial Investment Division board member with the Northwest Louisiana Realtors Board and has received multiyear recognition from the Shreveport Chamber of Commerce 40 Under 40 program.

He is a graduate of Louisiana Tech University and is currently pursuing a CCIM (Certified Commercial Investment Member) designation with plans to earn an SIOR designation as an Industrial Specialist.

You may contact Michael at 318-222-2244 x 678 or [mberlin@vintagerealty.com](mailto:mberlin@vintagerealty.com)



For more information, contact:

**Chris Susilovich** | 318.222.2244 (Office) | [csusilovich@vintagerealty.com](mailto:csusilovich@vintagerealty.com)

**Michael Berlin, Associate Broker** | 318.222.2244 (Office) | [mberlin@vintagerealty.com](mailto:mberlin@vintagerealty.com)

All Information Contained Herein Is Believed To Be Accurate, But Is Not Warranted And No Liability Of Errors Or Omissions Is Assured By Either The Property Owner Or Vintage Realty Company Or Its Agents And Employees. Prices As Stated Herein And Product Availability Is Subject To Change And/Or Sale Or Lease Without Prior Notice, And All Sizes And Dimensions Are Subject To Correction. 2/2019