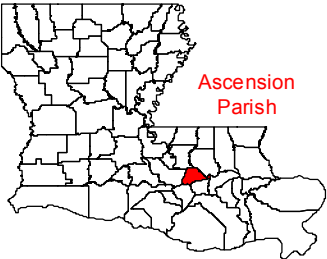
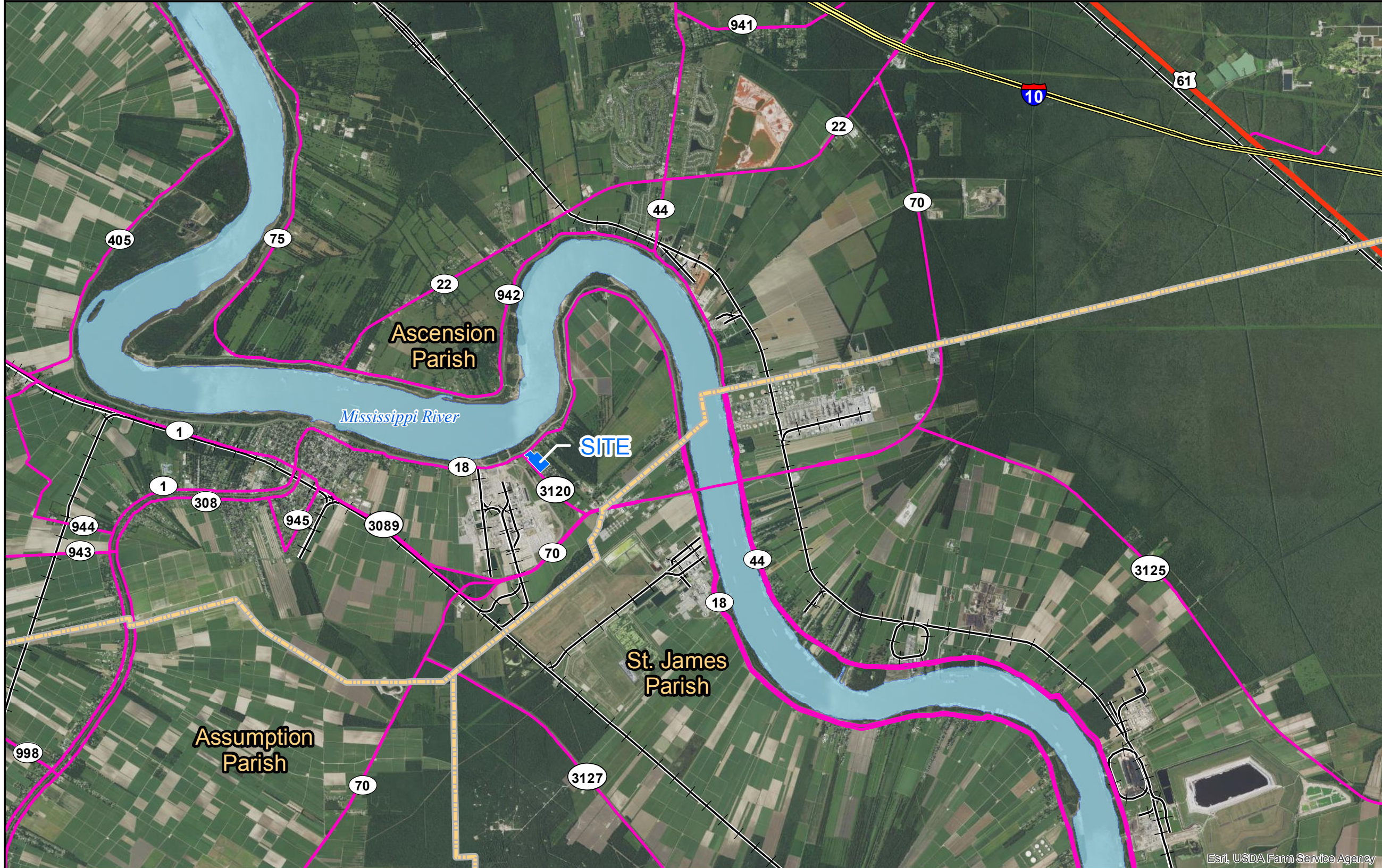


Exhibit N. Foti - Highway 18 Roadway Transportation
Infrastructure Wide Map



Document Path: R:\DWG\16-000\16-392\Foti Sites\Foti - Hwy 18\Program Application Exhibits\Exhibit N - Roadway Transportation Infrastructure Wide Map.mxd

Foti - Highway 18 Roadway Transportation Infrastructure Wide Map



- LEGEND**
- Foti - Highway 18 (± 22.70 Ac.)
 - Parish Boundary
 - Existing Roadway**
 - Interstate
 - US Highway
 - State Highway
 - Railroad
 - Mississippi River



SITE NAME: Foti - Highway 18

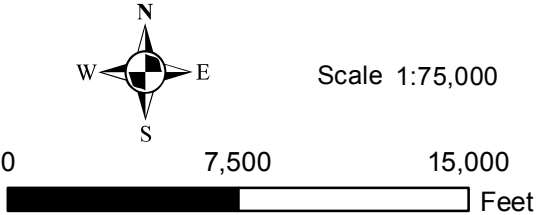
Drawn By: CDS

Checked By: GJB

Date: 12/18/2017

General Notes:
1. The information presented herein was obtained from various resources and should be considered preliminary.
2. No attempt has been made by Duplantis Design Group, PC to verify site boundary, title, actual legal ownership, deed restrictions, servitudes, easements, or other burdens on the property.

References:
1. Aerial imagery USDA NAIP 2015
2. Site boundary from Landsource, Inc.
3. Transportation data from U.S. Census Bureau



DDG
DUPLANTIS DESIGN GROUP
8352 Bluebonnet Blvd.
Baton Rouge, LA 70810
Phone: 225-751-4490
www.ddgpc.com