

# Exhibit K. Angel Ranch Site Electrical Infrastructure Upgrade Map & Letter



Entergy  
Distribution Operations Southern  
5755 Choctaw Drive  
Baton Rouge, LA 70805  
**Distribution Construction & Design**

October 22, 2014

Mr. Joseph Yarbrough, E.I., L.S.I.  
CSRS, Inc.  
yarbrough@csrsonline.com

Re: Availability of Electric Utilities  
Angel Ranch Property

Mr. Yarbrough:

Please be advised that Entergy Gulf States Louisiana, L.L.C. currently has electric facilities available to provide service to the planned developments at the following location:

## **Ferry Road, New Roads, Louisiana**

As per your request, we hereby certify:

- A) This development site is within our service area;
- B) We are willing to serve the development with overhead or underground service as requested by the developer/owner; and
- C) Three phase is available.

We will be looking forward to working with you on this project. When the customer is ready for construction, please have the customer contact Entergy for service at 1-800-ENTERGY. Should you need additional information, please contact me at 225-354-3056.

Sincerely,

A handwritten signature in blue ink, appearing to read "G. Doyle", followed by the letters "P.E." in a smaller, printed font.

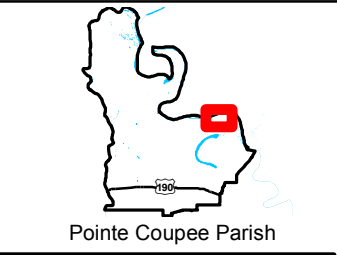
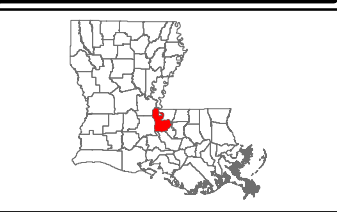
Gerald T. Doyle, P. E.  
Distribution Design Engineer



# Exhibit K. Angel Ranch Site Electrical Infrastructure Upgrade Map

Existing Electric Distribution  
Angel Ranch Site  
Poitne Coupee Parish, LA

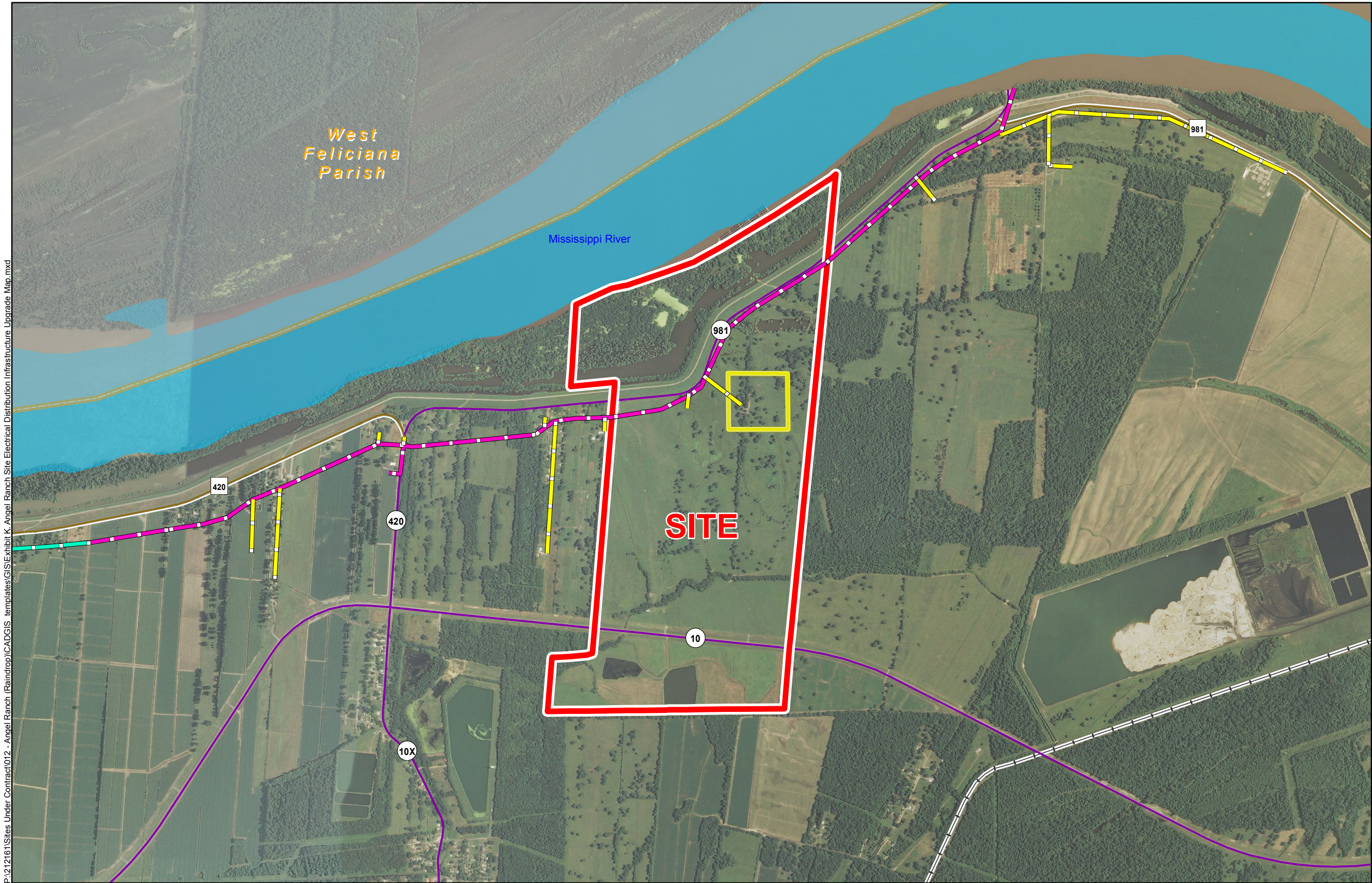
BRAC



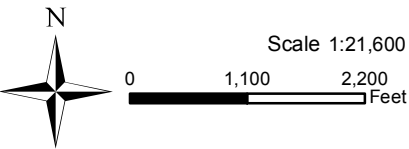
LEGEND

- Site Boundary (731.56 Acres +/-)
- Sample 25-Acre Site Pad
- Single Phase Electrical (Entergy)
- Existing 3 Phase Electrical
- Future 3 Phase Electrical (Entergy) (Under Construction)
- Existing Roadway
  - Urban State Highway
  - Rural State Highway
  - Railroad
  - Waterbody
  - Parish Boundary

P:\212161\Sites Under Contract\012 - Angel Ranch (Raindrop)\CAD\GIS templates\GIS\Exhibit K Angel Ranch Site Electrical Distribution Infrastructure Upgrade Map.mxd



- General Notes:
1. No attempt has been made by CSRS, Inc. to verify site boundary, title, actual legal ownership, deed restrictions, servitudes, easements, or other burdens on the property, other than that furnished by the client or his representative.
  2. Transportation data from 2013 TIGER datasets via U.S. Census Bureau at <ftp://ftp2.census.gov/geo/tiger/TIGER2013>.
  3. Utility information from visual inspection and/or the individual utility operators. Exact field location has not been determined by survey. The lines shown are an approximate representation only and may have been offset for depiction purposes.
  4. 2013 aerial imagery from USDA-APFO National Agricultural Inventory Project (NAIP) and may not reflect current ground conditions.



Baton Rouge Area Chamber.

Date:	10/28/2014
Project Number:	212161.20.012
Drawn By:	MAT
Checked By:	TMG

CSRS  
IMAGINE SHAPE DELIVER  
6767 Perkins Road Suite 200 Baton Rouge, LA 70808  
Telephone: 225 769-0546 Fax: 225 767-0060  
[www.csrsonline.com](http://www.csrsonline.com)