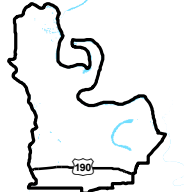


# Exhibit Q. Moseley North Site Roadway Transportation Infrastructure Wide Map

Area Transportation Infrastructure  
Moseley North Site  
Pointe Coupee Parish, LA

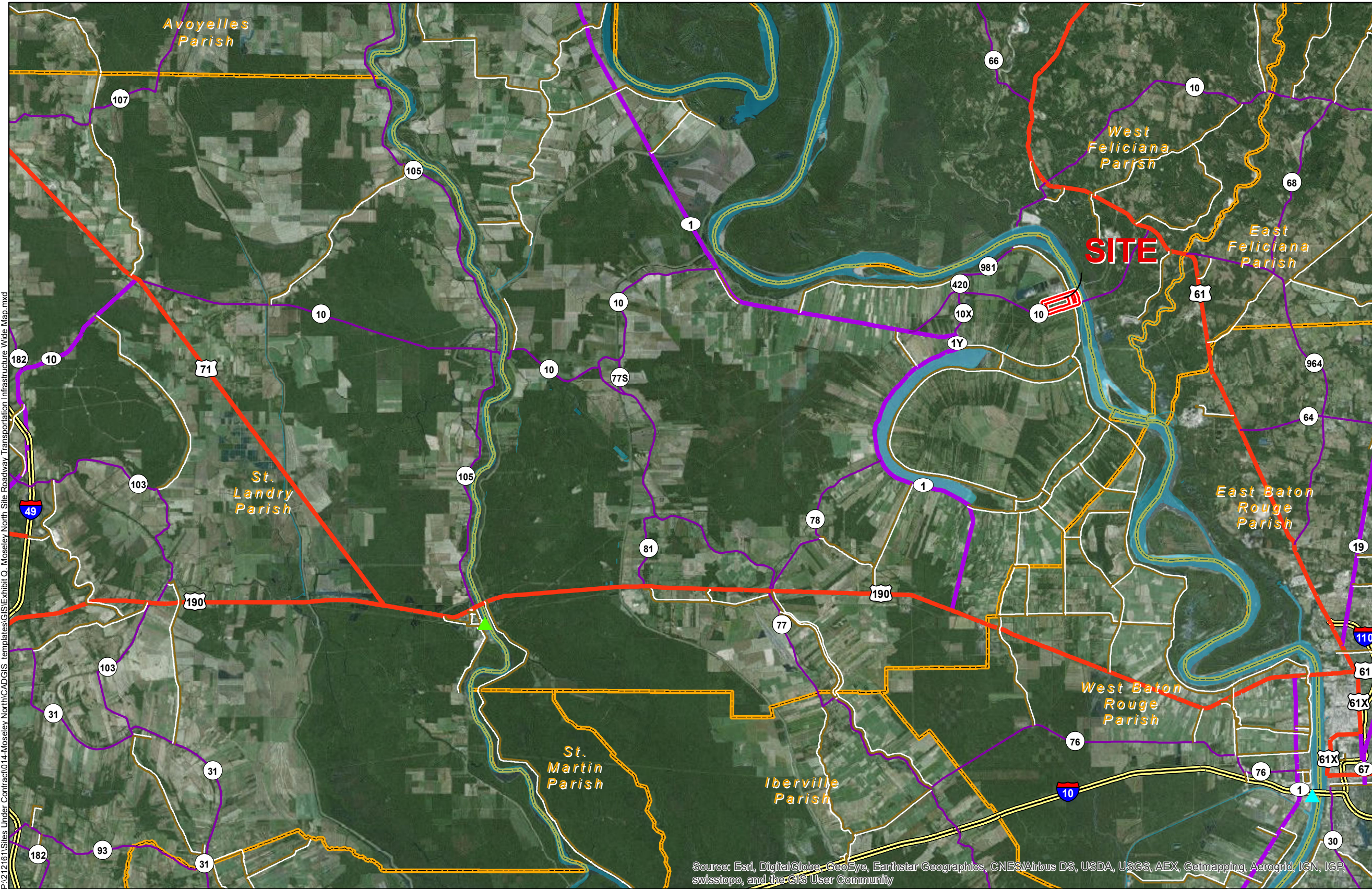
BRAC



Pointe Coupee Parish

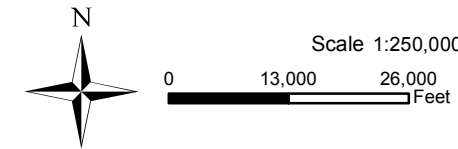
**LEGEND**

- Site Boundary (304.24 Acres +/-)
- ▲ Deep Draft Port
- ▲ Shallow Draft Port
- Existing Roadway**
- Interstate
- US Highway
- 4-Lane State Highway
- Urban State Highway
- Rural State Highway
- Waterbody
- Parish Boundary



Source: Esri, DigitalGlobe, GeoEye, Earthstar Geographics, CNES/Airbus DS, USDA, USGS, AEX, Getmapping, Aerogrid, IGN, IGP, swisstopo, and the GIS User Community

- General Notes:
1. No attempt has been made by CSRS, Inc. to verify site boundary, title, actual legal ownership, deed restrictions, servitudes, easements, or other burdens on the property, other than that furnished by the client or his representative.
  2. Transportation data from 2013 TIGER datasets via U.S. Census Bureau at [ftp://ftp2.census.gov/geo/tiger/TIGER2013](http://ftp2.census.gov/geo/tiger/TIGER2013).
  3. 2013 aerial imagery from USDA-APFO National Agricultural Inventory Project (NAIP) and may not reflect current ground conditions.



**Baton Rouge Area Chamber.**

Date: 5/1/2015  
 Project Number: 212161.20.012  
 Drawn By: MMS  
 Checked By: TMG

**CSRS**  
 IMAGINE SHAPE DELIVER

6767 Perkins Road Suite 200 Baton Rouge, LA 70808  
 Telephone: 225 767-0546 Fax: 225 767-0060  
[www.csrsonline.com](http://www.csrsonline.com)

P:\212161\Sites Under Contract\014-Moseley North\GIS\Exhibit Q. Moseley North Site Roadway Transportation Infrastructure Wide Map.mxd