

# Exhibit N. I-12 Industrial Site Electrical Distribution Infrastructure Map

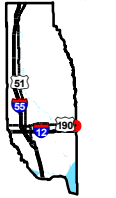


CSRS

# I - 12 Industrial Site Electrical Distribution Infrastructure Map

I - 12 Industrial Site  
Tangipahoa Parish, LA

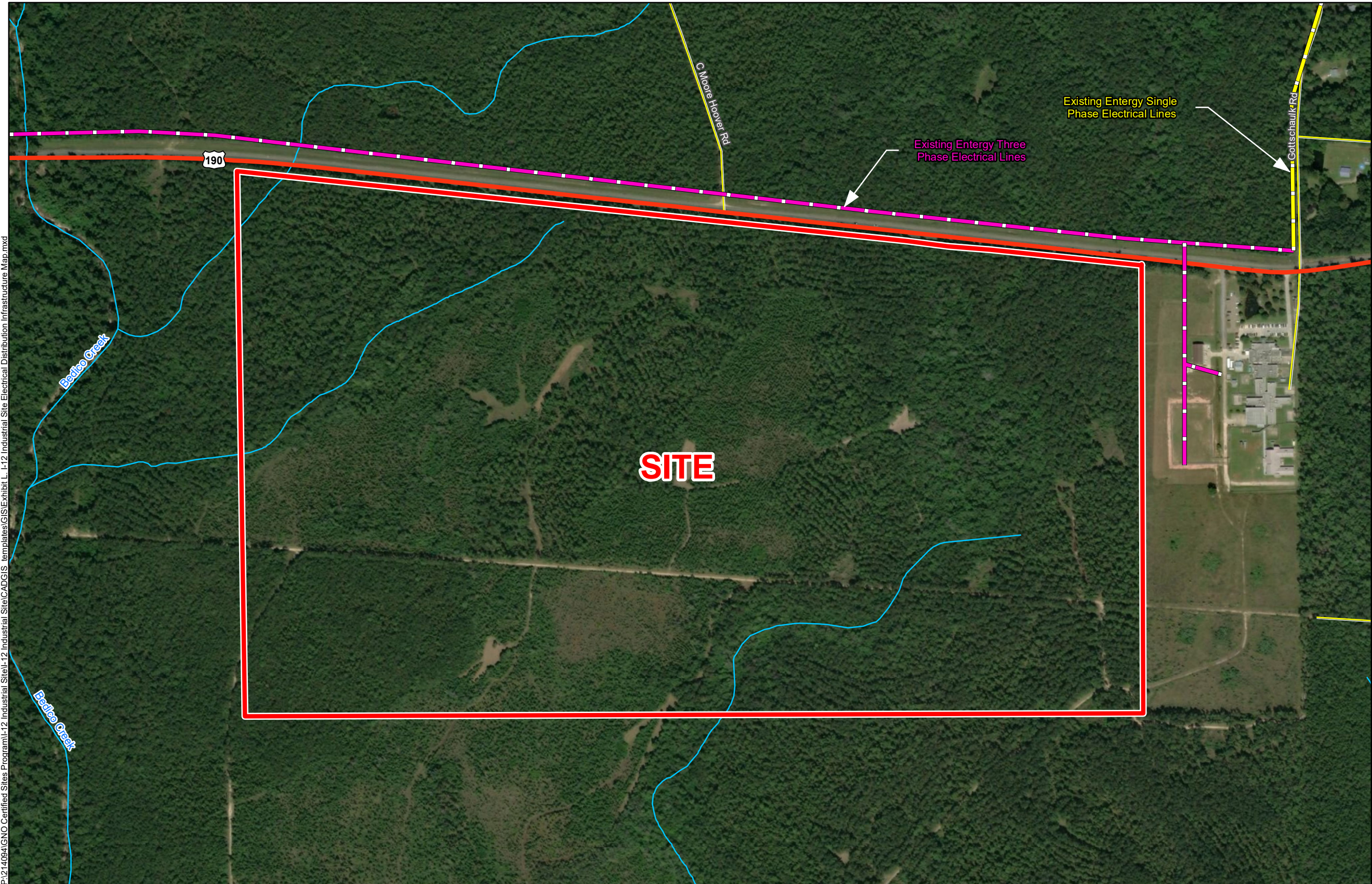
GNO



Tangipahoa Parish

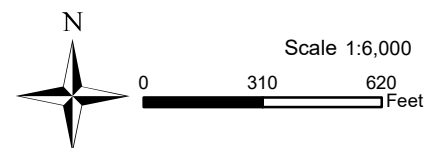
LEGEND

- Site Boundary
- Existing Entergy Electrical Lines**
  - Existing Single Phase Electrical Lines
  - Existing Three Phase Electrical Lines
- Existing Roadway**
  - US Highway
  - Local Roads



P:\214094\GNO Certified Sites Program\I-12 Industrial Site\CAD\GIS templates\GIS\Exhibit L - I-12 Industrial Site Electrical Distribution Infrastructure Map.mxd

- General Notes:
1. No attempt has been made by CSRS, Inc. to verify site boundary, title, actual legal ownership, deed restrictions, servitudes, easements, or other burdens on the property, other than that furnished by the client or his representative.
  2. Transportation data from 2013 TIGER datasets via U.S. Census Bureau at <ftp://ftp2.census.gov/geo/tiger/TIGER2013>.
  3. Utility information from visual inspection and/or the individual utility operators. Exact field location has not been determined by survey. The lines shown are an approximate representation only and may have been offset for depiction purposes.
  4. 2015 aerial imagery from USDA-APFO National Agricultural Inventory Project (NAIP) and may not reflect current ground conditions.



Date:	5/2/2019
Project Number:	214094
Drawn By:	AMB
Checked By:	DWC

