

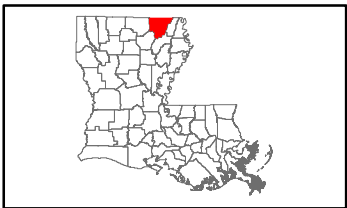


Exhibit L. Bastrop IP Mill Site Potable Water Infrastructure Map

Bastrop IP Mill Site Potable Water Infrastructure Map

Bastrop IP Mill Site
Morehouse Parish, LA

NELEA



LEGEND

- Site Boundary
- On-Site Industrial Process Water Well
- Existing Morehouse Parish Potable Water Lines
 - 10 in. Potable Water Line
 - 6 in. Potable Water Line
 - 4 in. Potable Water Line
- Existing Roadway
 - US Highway
 - Rural State Highway
 - Local Roads
 - Stream

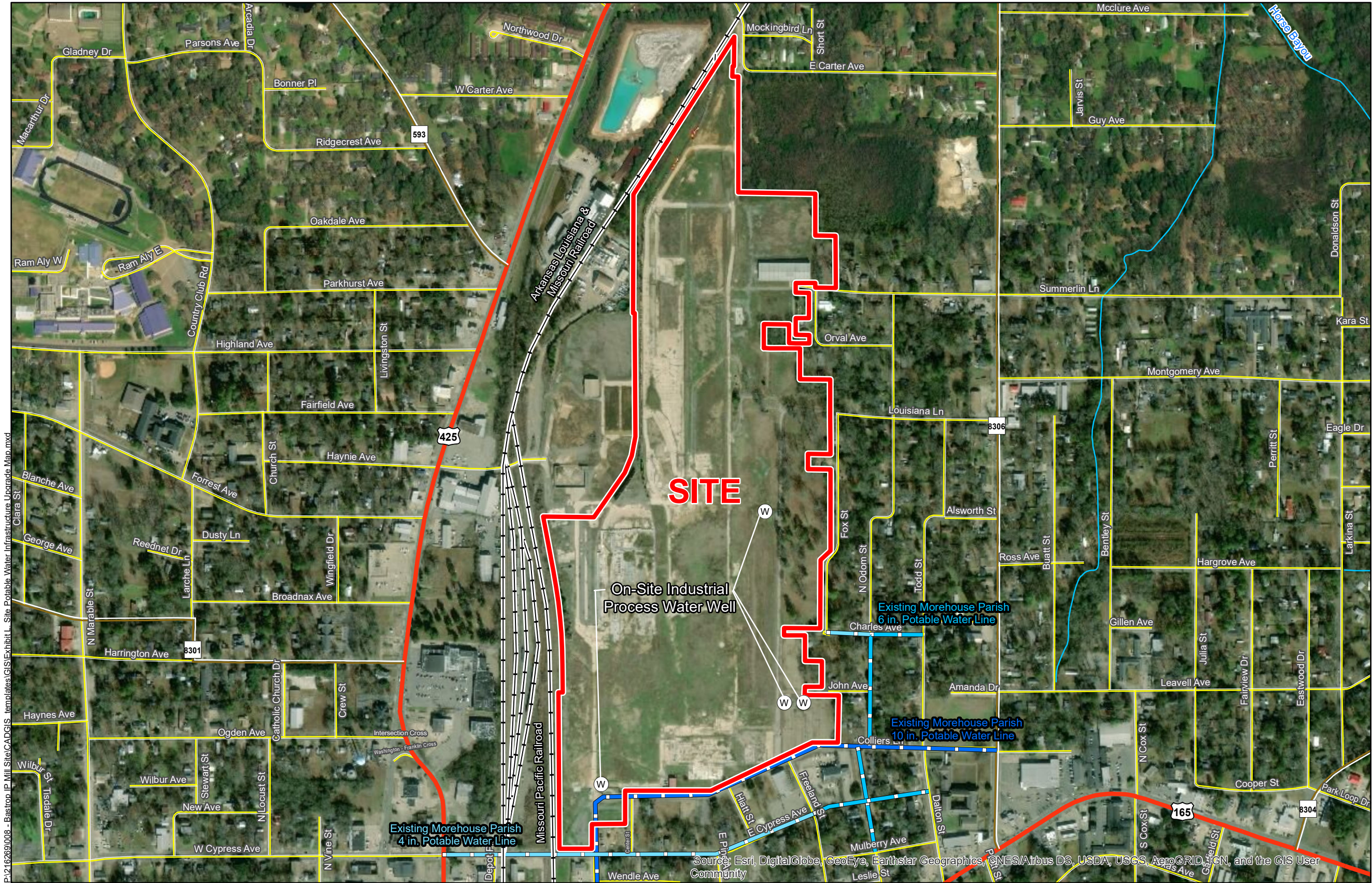


ECONOMIC ALLIANCE

NELEA

Date:	8/12/2019
Project Number:	216269
Drawn By:	BNF
Checked By:	DWC

CSRS



General Notes:

1. No attempt has been made by CSRS, Inc. to verify site boundary, title, actual legal ownership, deed restrictions, servitudes, easements, or other burdens on the property, other than that furnished by the client or his representative.
2. Transportation data from 2013 TIGER datasets via U.S. Census Bureau at <ftp://ftp2.census.gov/geo/tiger/TIGER2013>.
3. Utility information from visual inspection and/or the individual utility operators. Exact field location has not been determined by survey. The lines shown are an approximate representation only and may have been offset for depiction purposes.
4. 2015 aerial imagery from USDA-APFO National Agricultural Inventory Project (NAIP) and may not reflect current ground conditions.



0 290 580 Feet

Scale 1:7,000