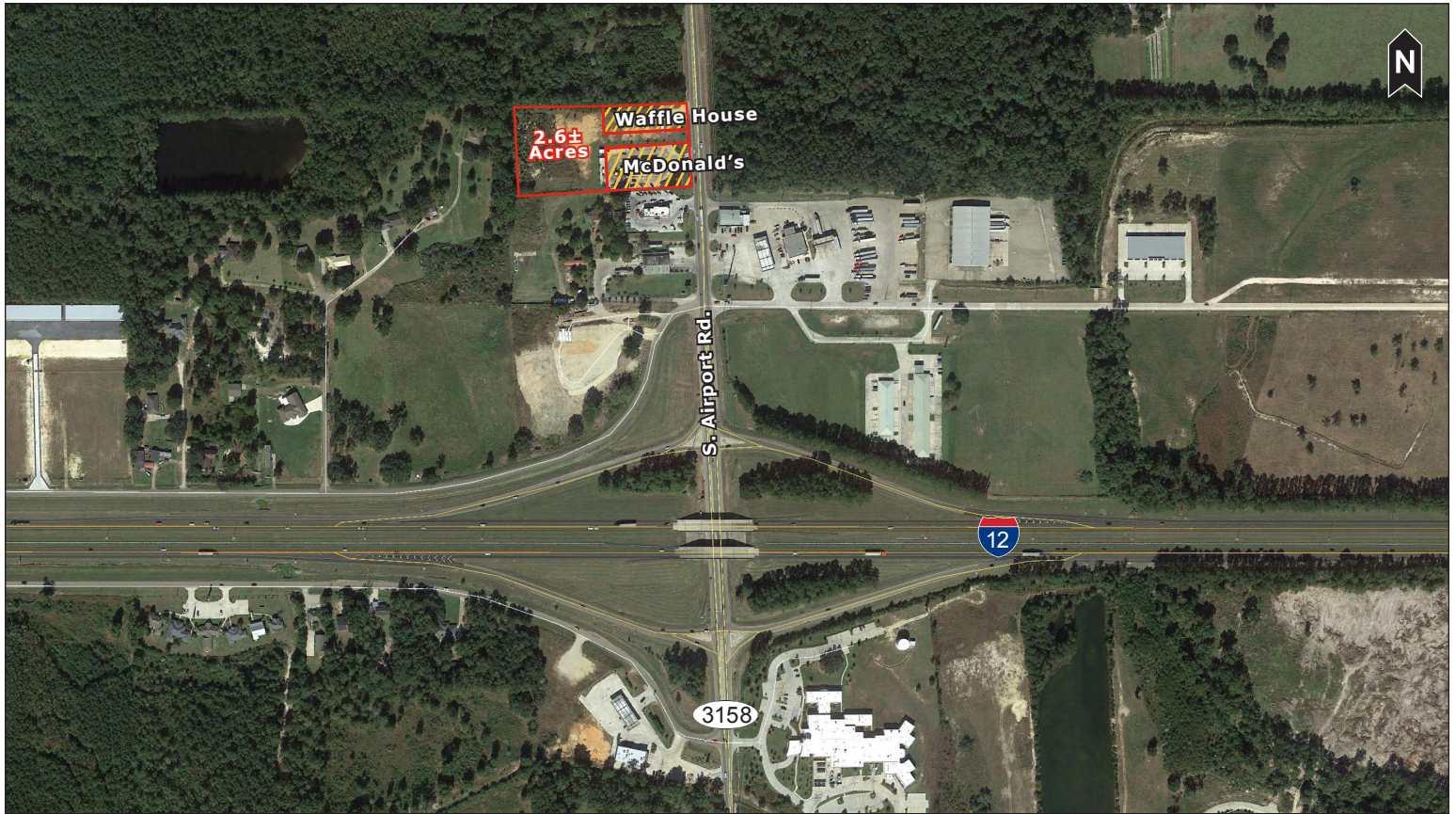


# S. AIRPORT RD.

S. Airport Rd., Hammond, LA

# FOR SALE



## Property Information

Type: Vacant land  
Zoning: No zoning required  
Wetlands: No delineation on file  
Flood Zone: X  
Utilities: Water, sewer, gas,  
& electric

## Size/Configuration

2.6± Acres

## Traffic Counts - ADT 2013

I-12, W of Airport Rd: 54,186

## 2015 Demographics

Population:  
17,138 (1 mile)  
49,752 (3 mile)  
69,298 (5 mile)  
Average HH Income:  
\$58,493 (1 mile)  
\$57,383 (3 mile)  
\$58,266 (5 mile)

Excellent commercial development site with direct access to Interstate 12 via S. Airport Road. Site is located behind a recently opened McDonald's and a planned Waffle House, and is in proximity to an array of other commercial and industrial projects either completed, under construction or in the permitting process.



**Joe Kramer**

cell: 504-236-7279 / direct: 985-246-3782 / fax: 985-246-3882  
jkramer@stirlingprop.com

RETAIL BROKERS NETWORK

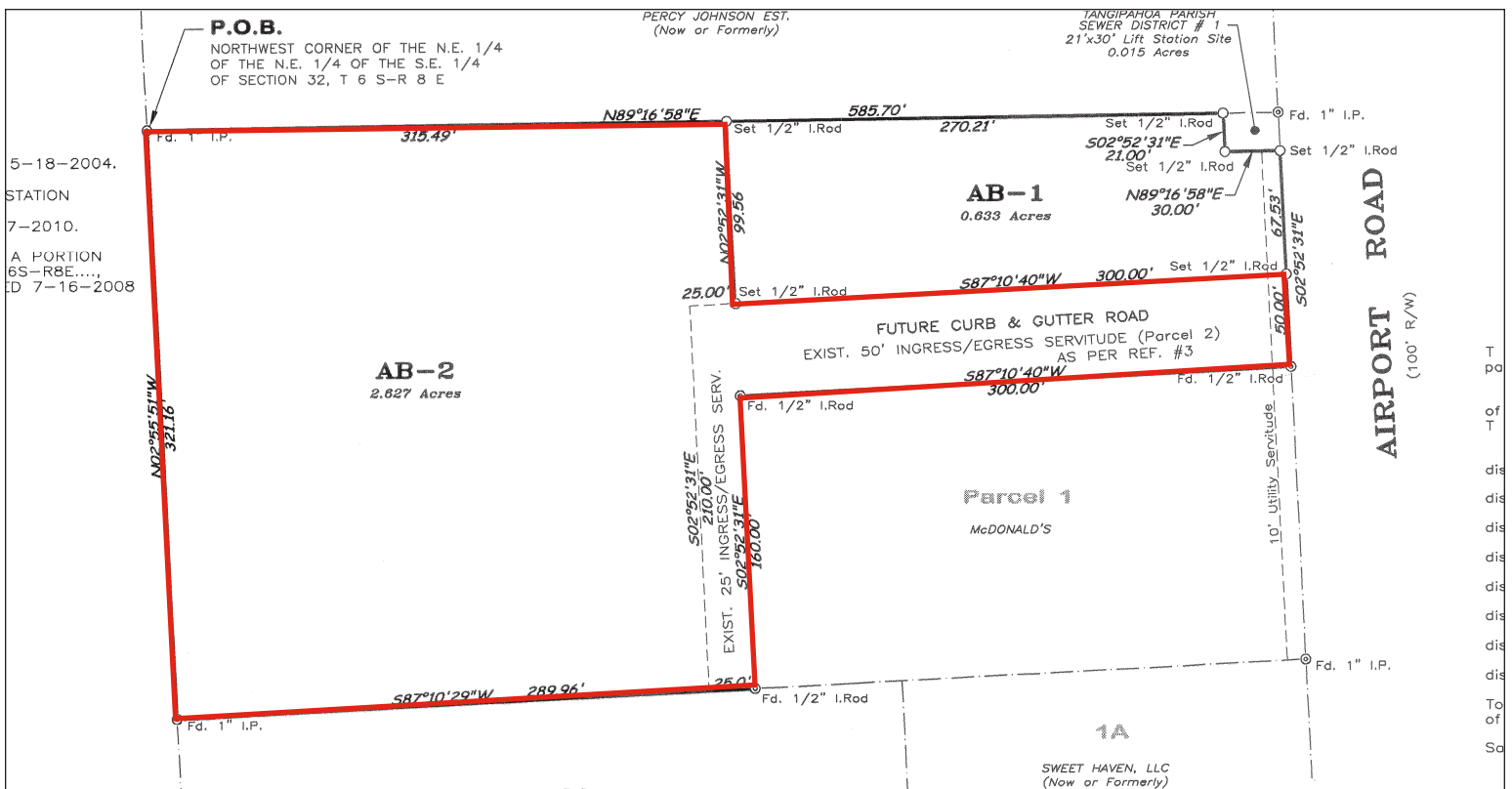
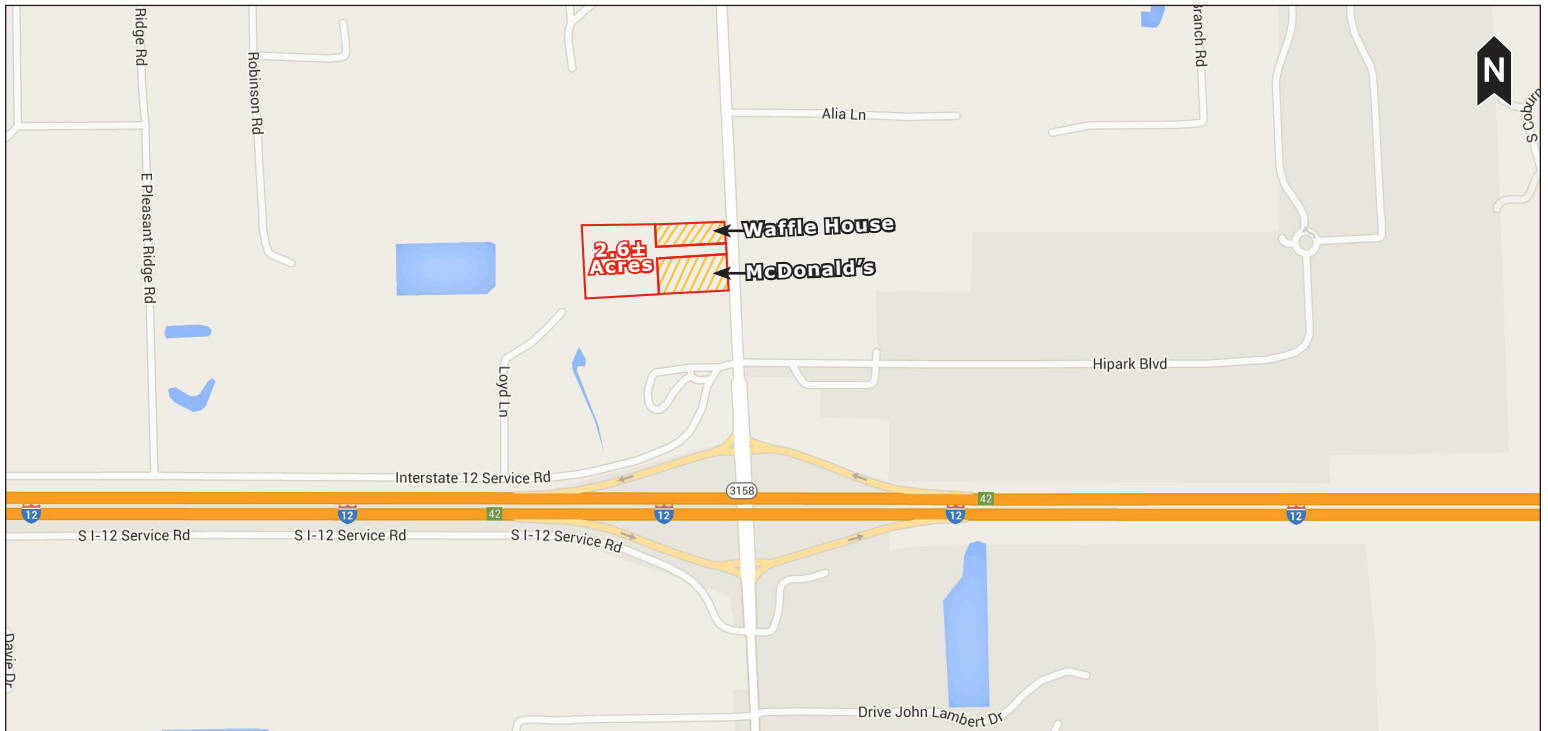


www.StirlingProperties.com

# S. AIRPORT RD.

S. Airport Rd., Hammond, LA

# FOR SALE



RETAIL BROKERS NETWORK



www.StirlingProperties.com

The foregoing is solely for information purposes and is subject to change without notice. Stirling Properties makes no representations or warranties regarding the properties or information herein including but not limited to any and all images pertaining to these properties. It is the obligation of each purchaser/lessee to investigate the condition and attributes of the properties and to verify the accuracy of the foregoing information to the extent such purchaser/lessee deems necessary. Also subject to errors, omissions, changes in terms and conditions, prior sale, lease or withdrawal, without notice. 1/16