

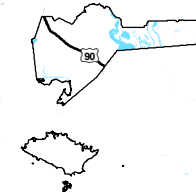
## Exhibit T. Progress Point Site U.S. Geological Survey Quad Map



# Progress Point Site U.S. Geological Survey Quad Map

Progress Point Site  
Iberia Parish, LA

One Acadiana

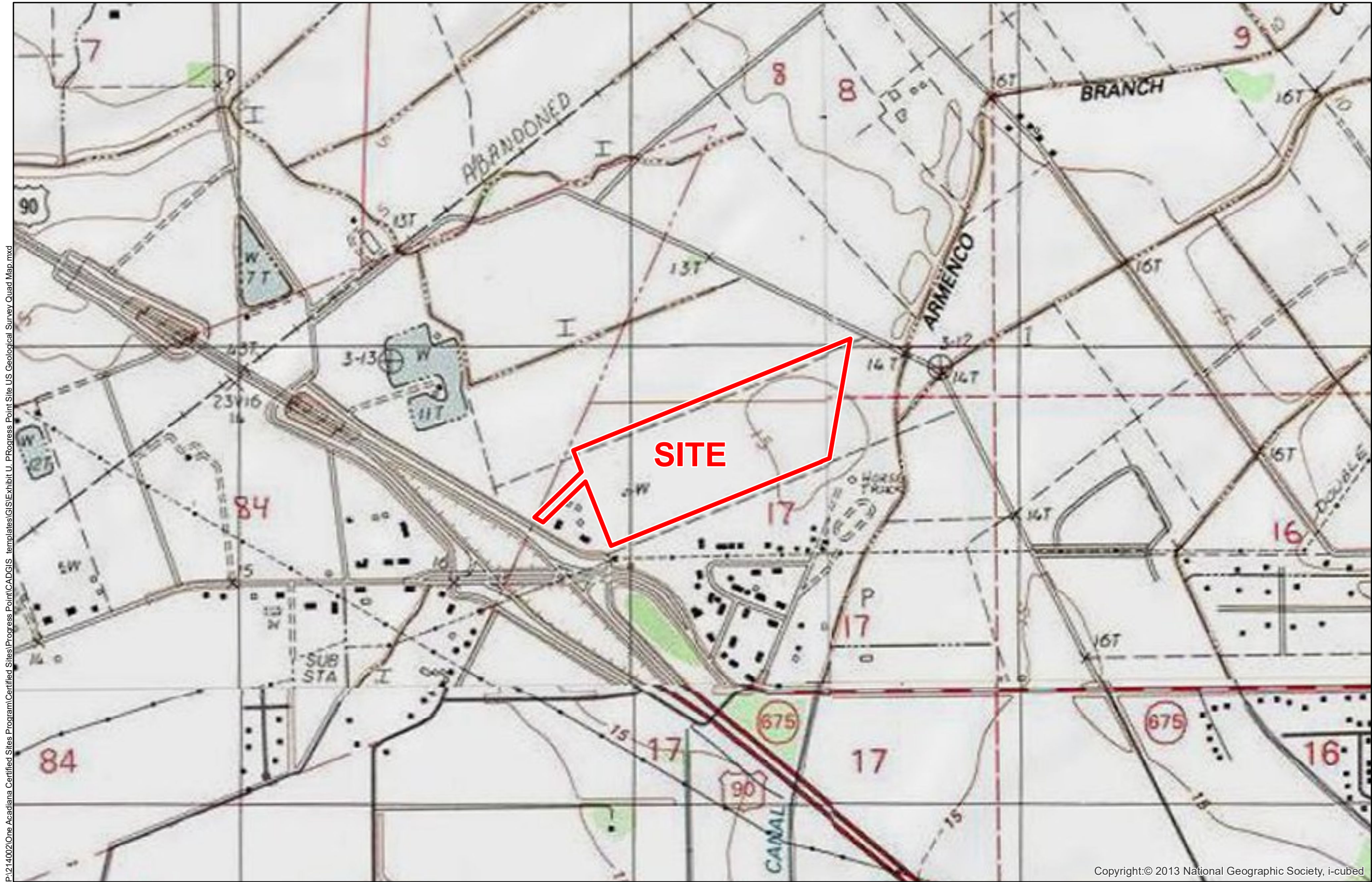


Iberia Parish

LEGEND

 Site Boundary

P:\214002\One Acadiana Certified Sites Program\Certified Sites\Progress Point\CADGIS templates\GIS\Exhibit U. Progress Point Site US Geological Survey Quad Map.mxd



Copyright:© 2013 National Geographic Society, i-cubed

- General Notes:
1. No attempt has been made by CSRS, Inc. to verify site boundary, title, actual legal ownership, deed restrictions, servitudes, easements, or other burdens on the property, other than that furnished by the client or his representative.
  2. Topo data and symbologies from USDA NRCS site <http://datagateway.nrcs.usda.gov/GDGOrder.aspx> as created by USDA/NRCS National Geospatial Center of Excellence "USDA-NRCS-NCGC Digital Raster Graphic MrSID Mosaic".



Scale 1:10,000  
0 530 1,060 Feet

Date:	2/28/2018
Project Number:	214002
Drawn By:	EEB
Checked By:	TMK

**CSRS**  
IMAGINE SHAPE DELIVER  
6767 Perkins Road Suite 200 Baton Rouge, LA 70808  
Telephone: 225 769-0546 Fax: 225 767-0060  
[www.csrsonline.com](http://www.csrsonline.com)