

# Exhibit H. Belle Grove Site Wetlands & Cultural Encumbrances





# Belle Grove Site Wetlands & Cultural Encumbrances

Belle Grove Site  
Iberville Parish, LA

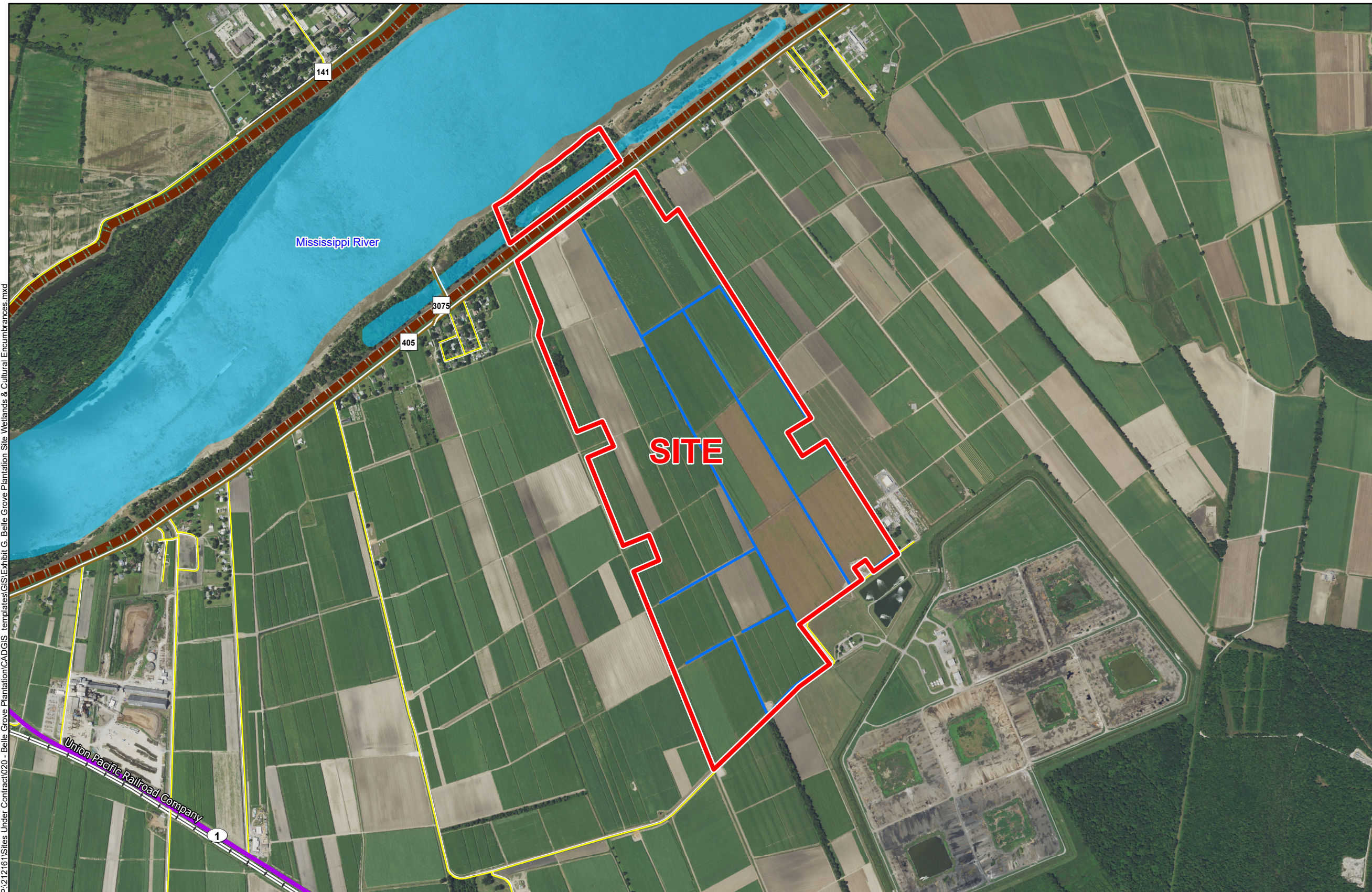
BRAC



Iberville Parish

**LEGEND**

- Site Boundary (555.19 Ac. +/-)
- Other Waters Of the U.S. (4.47 Ac. +/-)
- Existing Roadway**
- 4-Lane State Highway
- Rural State Highway
- Local Roads
- Railroad
- Levee
- Waterbody



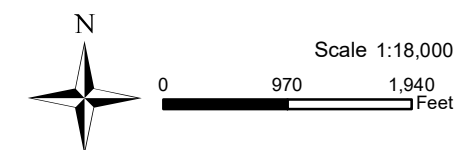
**Site Details**

Appx. Site Size: 555.19 Ac. ±  
Wetlands and OWOTUS: 4.47 Ac. ±

Baton Rouge Area Chamber.

Date:	4/18/2017
Project Number:	212161
Drawn By:	AMB
Checked By:	JAY

- General Notes:
1. No attempt has been made by CSRS, Inc. to verify site boundary, title, actual legal ownership, deed restrictions, servitudes, easements, or other burdens on the property, other than that furnished by the client or his representative.
  2. Transportation data from 2013 TIGER datasets via U.S. Census Bureau at <ftp://ftp2.census.gov/geo/tiger/TIGER2013>.
  3. 2015 aerial imagery from USDA-APFO National Agricultural Inventory Project (NAIP) and may not reflect current ground conditions.



**CSRS**  
IMAGINE SHAPE DELIVER  
6767 Perkins Road Suite 200 Baton Rouge, LA 70808  
Telephone: 225 769-0546 Fax: 225 767-0060  
[www.csrsonline.com](http://www.csrsonline.com)

P:\212161\Sites Under Contract\020 - Belle Grove Plantation\CAD\GIS templates\GIS\Exhibit G. Belle Grove Plantation Site Wetlands & Cultural Encumbrances.mxd