

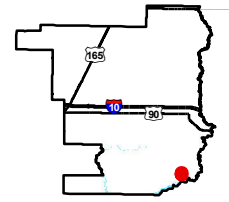
# Exhibit V. Benoit LA-26 Site U.S. Geological Survey Quad Map



# Benoit LA-26 Site U.S. Geological Survey Quad Map

Benoit LA-26 Site  
Jefferson Davis Parish, LA

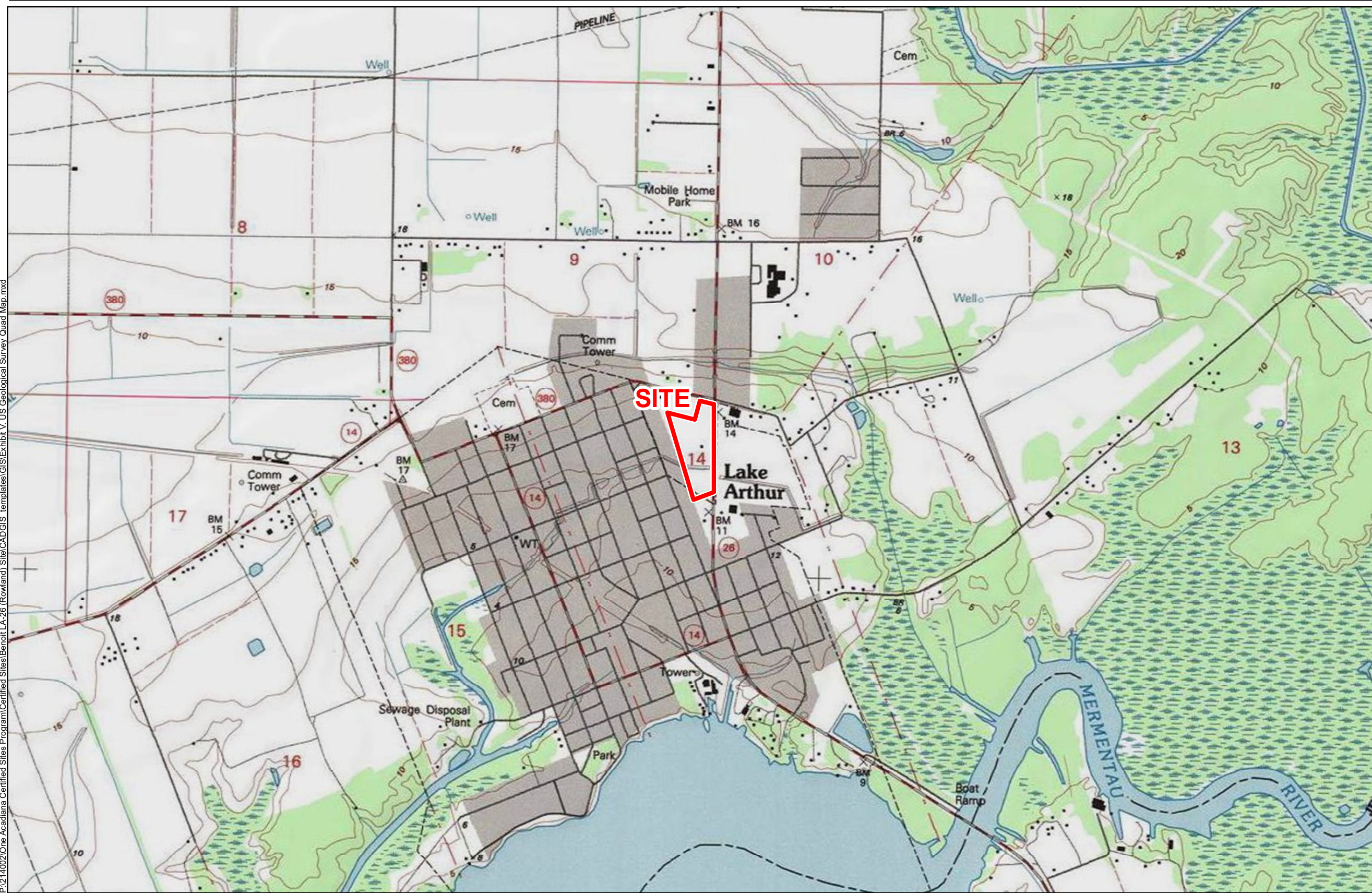
## One Acadiana



Jefferson Davis Parish

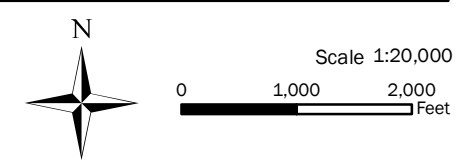
### LEGEND

Site Boundary (18.37± ac.)



P:\1214002\One Acadiana Certified Sites Program\Certified Sites\Benoit LA-26 (Rowland) Site\CAD\GIS Templates\GIS\Exhibit V\_U.S. Geological Survey Quad Map.mxd

General Notes:  
 1. No attempt has been made by CSRS, Inc. to verify site boundary, title, actual legal ownership, deed restrictions, servitudes, easements, or other burdens on the property, other than that furnished by the client or his representative.  
 2. Topo data and symbologies from USDA NRCS site <http://datagateway.nrcs.usda.gov/GDGOrder.aspx> as created by USDA/NRCS National Geospatial Center of Excellence "USDA-NRCS-NGC Digital Raster Graphic MrSID Mosaic".



Date:	8/10/2023
Project Number:	214002
Drawn By:	BMS
Checked By:	EEB

