

Exhibit O.

Foster Site

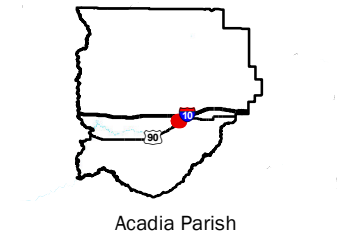
Electrical Transmission Infrastructure Map



Foster Site Electrical Transmission Infrastructure Map

Foster Site
Acadia Parish, LA

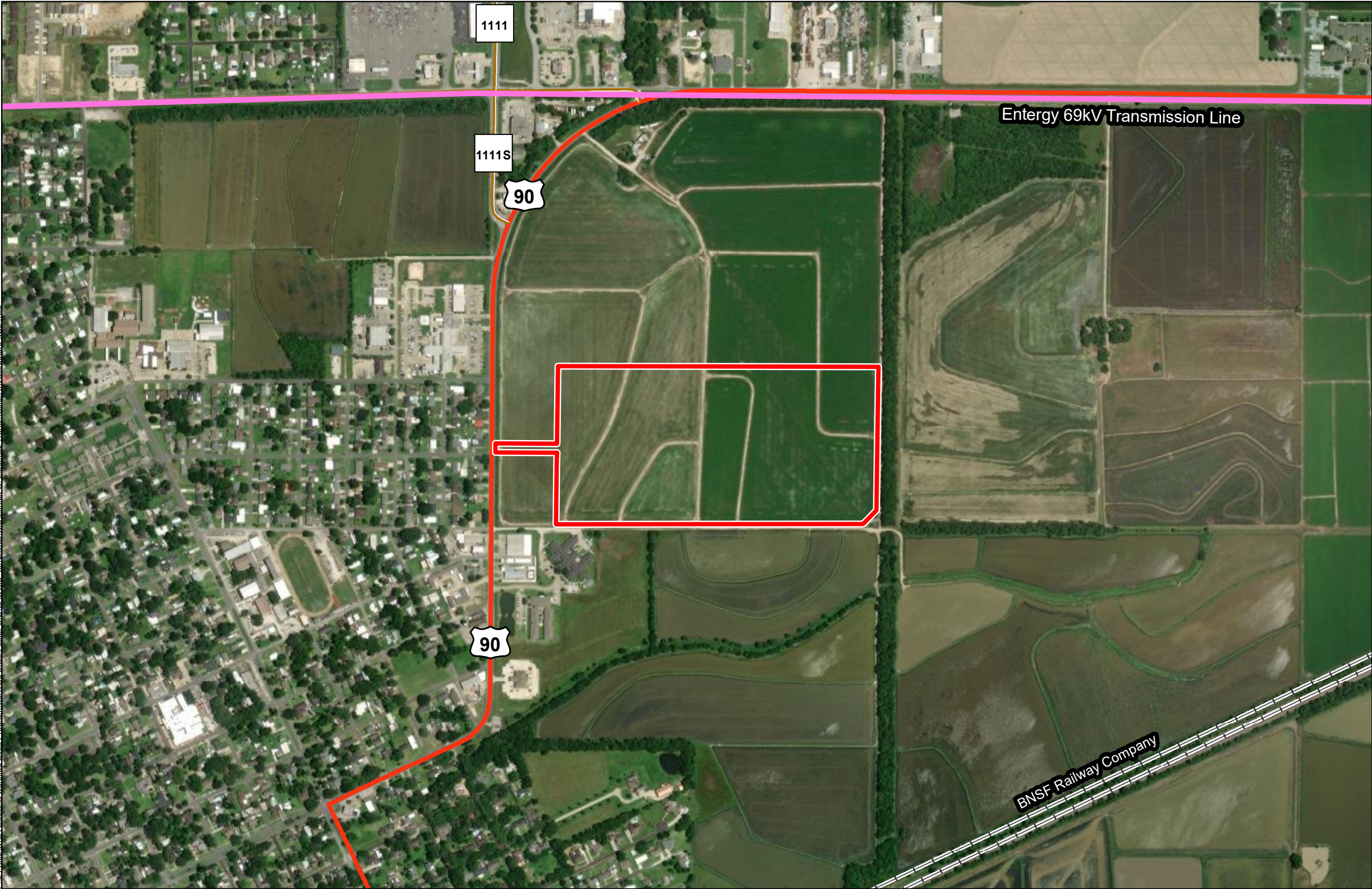
One Acadiana



Acadia Parish

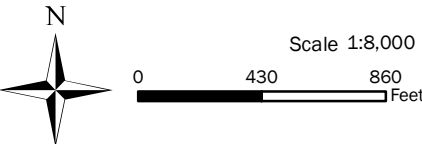
LEGEND

- Site Boundary (51.71± ac.)
- Electrical Transmission Line
 - 69kV
- Existing Roadway
 - US Highway
 - Rural State Highway
 - Railroad



General Notes:

- No attempt has been made by CSRS, Inc. to verify site boundary, title, actual legal ownership, deed restrictions, servitudes, easements, or other burdens on the property, other than that furnished by the client or his representative.
- Transportation data from 2013 TIGER datasets via U.S. Census Bureau at <ftp://ftp2.census.gov/geo/tiger/TIGER2013>.
- Utility information from visual inspection and/or the individual utility operators. Exact field location has not been determined by survey. The lines shown are an approximate representation only and may have been offset for depiction purposes.
- 2015 aerial imagery from USDA-APFO National Agricultural Inventory Project (NAIP) and may not reflect current ground conditions.



Date: 11/18/2024
Project Number: 214002
Drawn By: BMS
Checked By: EEB

