

Exhibit Q.

Crosspoint North Site

Local Product Pipelines Map

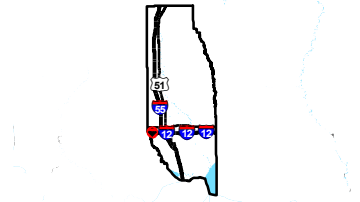


GREATER NEW ORLEANS
INC
REGIONAL ECONOMIC DEVELOPMENT

Crosspoint North Site Local Product Pipelines Map

Crosspoint North Site
Tangipahoa Parish, LA

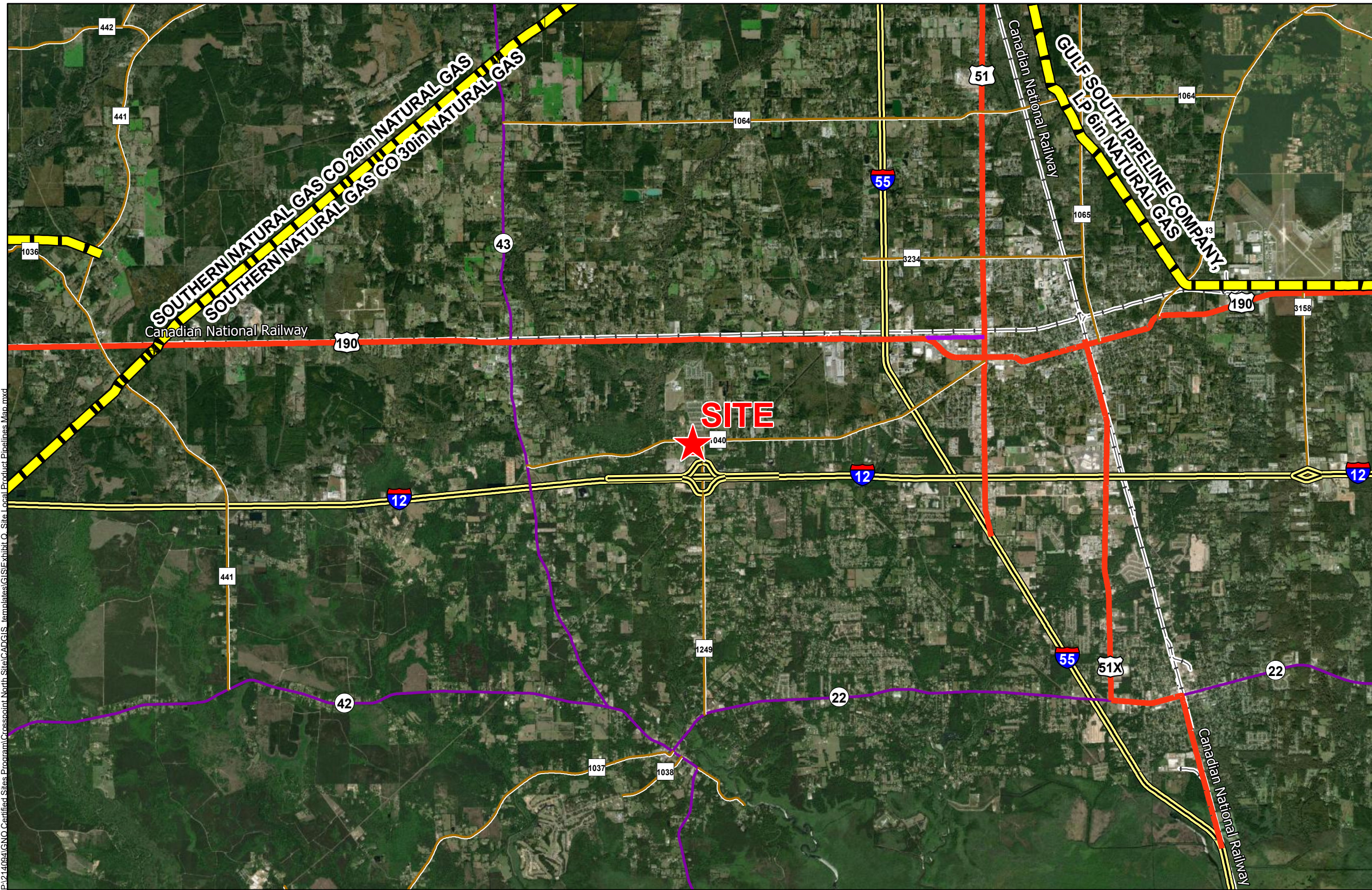
GNO



Tangipahoa Parish

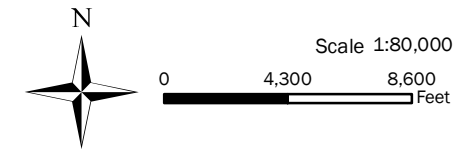
LEGEND

- Site Boundary (12.74 Ac. ±)
- National Pipeline Mapping System**
- NATURAL GAS
- Existing Roadway**
- Interstate
- US Highway
- 4-Lane State Highway
- Urban State Highway
- Rural State Highway
- Railroad



P:\214094\GNO_Certified Sites Program\Crosspoint North Site\GADGIS_templates\GIS\Exhibit O_Site Local Product Pipelines_Map.mxd

General Notes:
 1. No attempt has been made by CSRS, Inc. to verify site boundary, title, actual legal ownership, deed restrictions, servitudes, easements, or other burdens on the property, other than that furnished by the client or his representative.
 2. Transportation data from 2013 TIGER datasets via U.S. Census Bureau at <ftp://ftp2.census.gov/geo/tiger/TIGER2013>.
 3. Utility information from visual inspection and/or the individual utility operators. Exact field location has not been determined by survey. The lines shown are an approximate representation only and may have been offset for depiction purposes.
 4. 2015 aerial imagery from USDA-APFO National Agricultural Inventory Project (NAIP) and may not reflect current ground conditions.



Date: 1/15/2021
 Project Number: 214094
 Drawn By: SEW
 Checked By: EEB

