

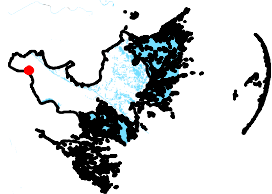
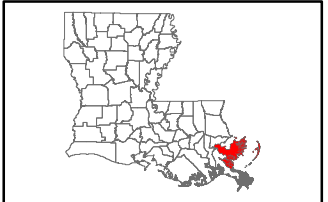
Exhibit O. Sinclair Site Local Product Pipelines Map



Sinclair Site Local Product Pipelines Map

Local Product Pipelines
Sinclair Site
St. Bernard Parish, LA

St. Bernard EDF



St. Bernard Parish

LEGEND

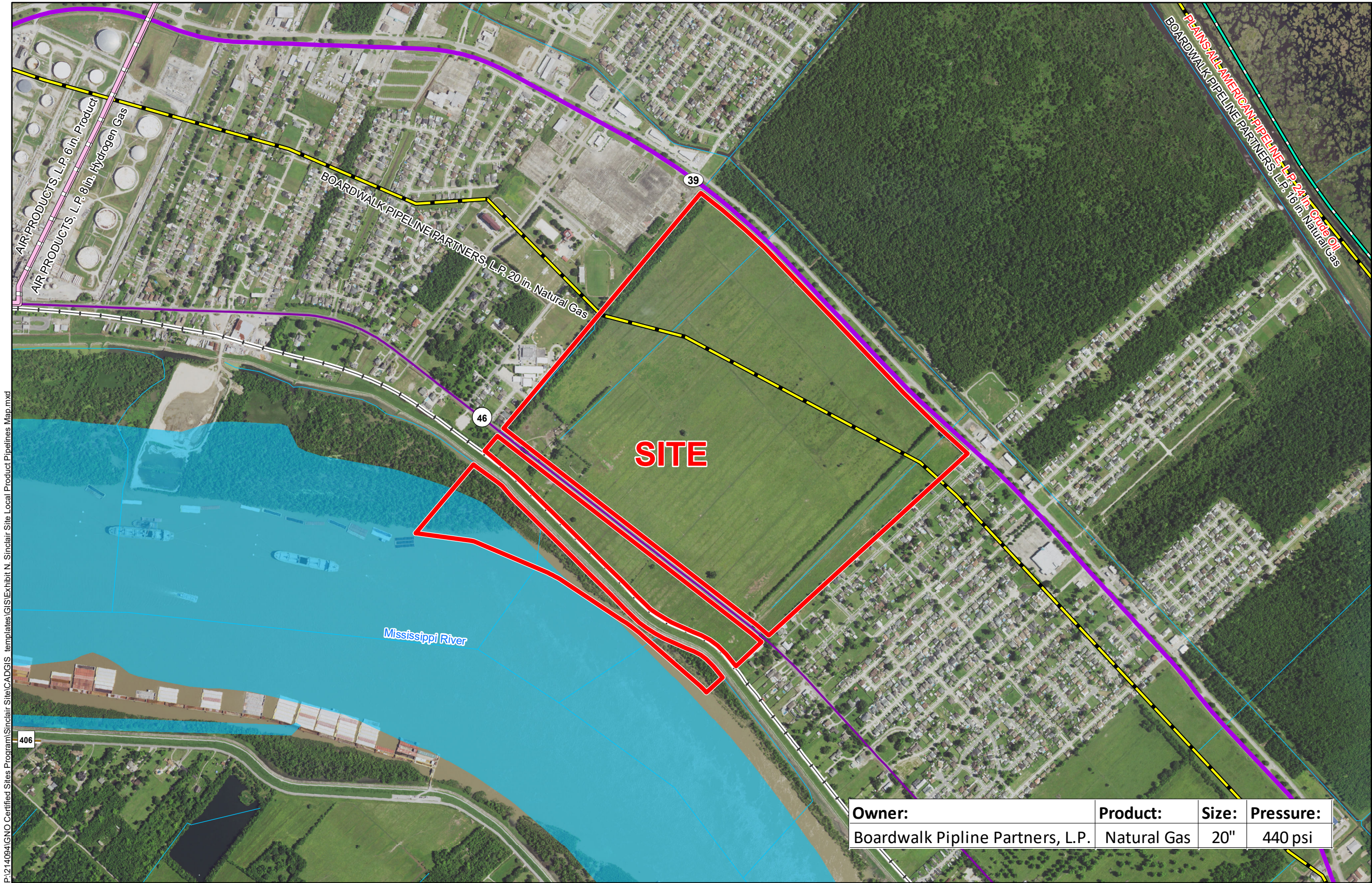
- Site Boundary (285.64 Ac. ±)
- Existing Transmission Pipelines
 - Product
 - Natural Gas
 - Oil
- Existing Roadway
 - 4-Lane State Highway
 - Urban State Highway
 - Rural State Highway
 - Railroad
 - Stream
 - Waterbody



Date: 12/6/2016
Project Number: 214094
Drawn By: TMK
Checked By: JAY

CSRS
IMAGINE SHAPE DELIVER
6767 Perkins Road Suite 200 Baton Rouge, LA 70808
Telephone: 225 769-0546 Fax: 225 767-0060
www.csrsonline.com

P:\214094\GNO Certified Sites Program\Sinclair Site\CAD\GIS templates\GIS\Exhibit N. Sinclair Site Local Product Pipelines Map.mxd



Owner:	Product:	Size:	Pressure:
Boardwalk Pipeline Partners, L.P.	Natural Gas	20"	440 psi

- General Notes:
- No attempt has been made by CSRS, Inc. to verify site boundary, title, actual legal ownership, deed restrictions, servitudes, easements, or other burdens on the property, other than that furnished by the client or his representative.
 - Transportation data from 2013 TIGER datasets via U.S. Census Bureau at <ftp://ftp2.census.gov/geo/tiger/TIGER2013>.
 - Pipeline information from IHS, Inc. and is current as of 05/2016. Product types in individual lines can vary and products represented here are current as of the publication of this exhibit, but may change depending on the demands and requirements of each system. Exact field location has not been determined by survey. The lines shown are an approximate representation only and may have been offset for depiction purposes.
 - 2015 aerial imagery from USDA-APFO National Agricultural Inventory Project (NAIP) and may not reflect current ground conditions.

