

# Exhibit W. Terre Haute Development Soils Conservation Service Map



**GREATER NEW ORLEANS**  
INC  
REGIONAL ECONOMIC DEVELOPMENT

# Terre Haute Development Soils Conservation Service Map

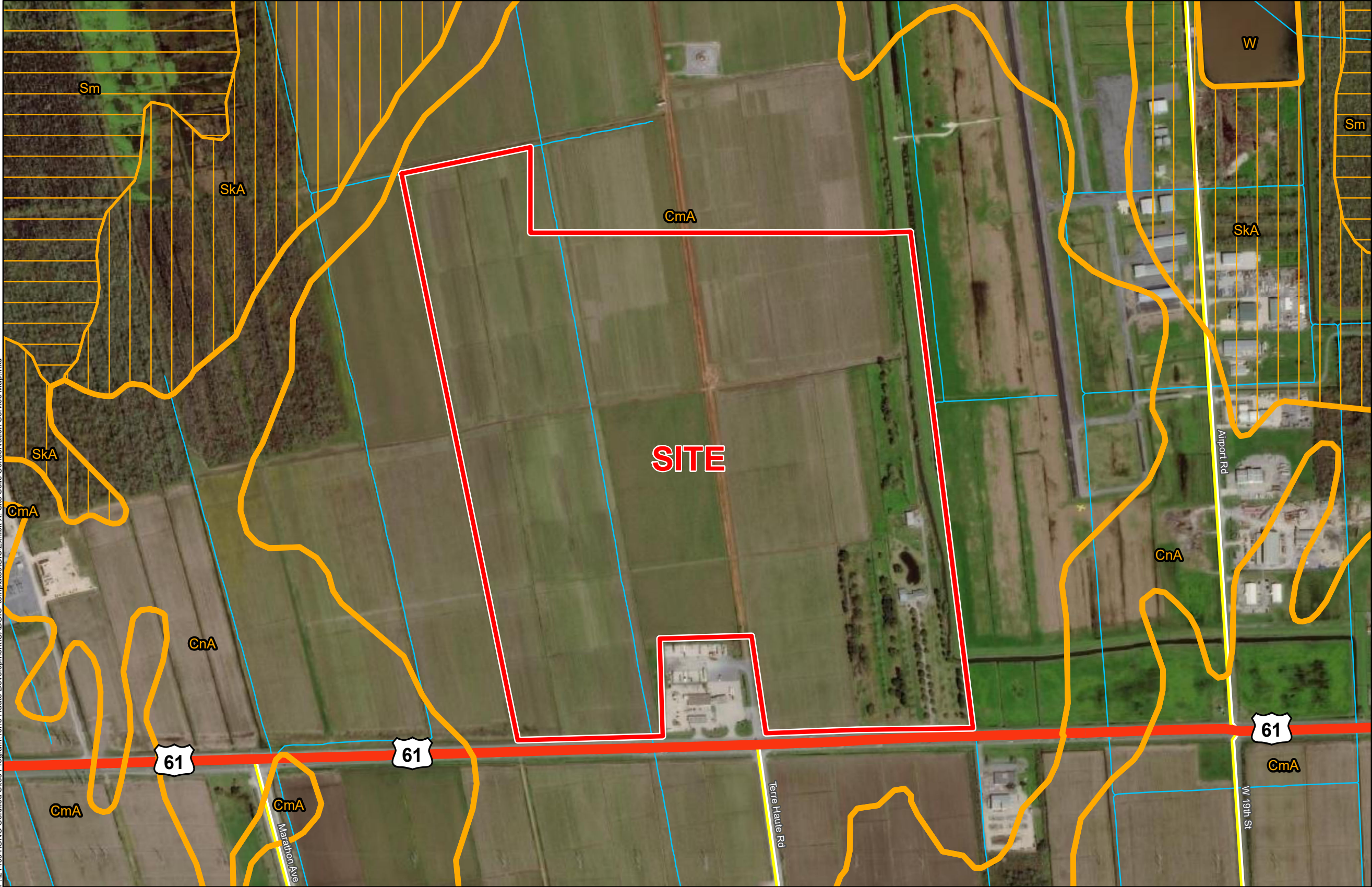
Terre Haute Development  
St. John the Baptist Parish,  
LA  
GNO



St. John the Baptist Parish

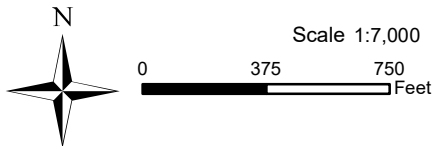
LEGEND

- Site Boundary (185.5 Ac.±)
- Soil Type**
- CmA - Cancienne silt loam, 0 to 1 percent slopes (2% hydric)
- CnA - Cancienne silty clay loam, 0 to 1 percent slopes (10% hydric)
- SkA - Schriever clay, 0 to 1 percent slopes (98% hydric)
- Sm - Schriever clay, 0 to 1 percent slopes, frequently flooded (100% hydric)
- W - Water
- Existing Roadway**
- US Highway
- Local Roads
- Stream



P:\214094\GNO Certified Sites Program\Terre Haute Development\CAD\GIS - templates\GIS\Exhibit X - Site Soils Conservation Service Map.mxd

- General Notes:
- No attempt has been made by CSRS, Inc. to verify site boundary, title, actual legal ownership, deed restrictions, servitudes, easements, or other burdens on the property, other than that furnished by the client or his representative.
  - Transportation data from 2013 TIGER datasets via U.S. Census Bureau at [ftp://ftp2.census.gov/geo/tiger/TIGER2013](http://ftp2.census.gov/geo/tiger/TIGER2013).
  - 2015 aerial imagery from USDA-APFO National Agricultural Inventory Project (NAIP) and may not reflect current ground conditions.
  - Soils data from USDA SSURGO website: <http://websoilsurvey.sc.egov.usda.gov/App/WebSoilSurvey.aspx>.



Date: 2/11/2021  
Project Number: 214094  
Drawn By: KPH  
Checked By: EEB

