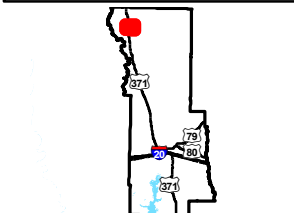
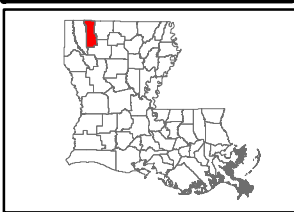


Exhibit X. North Webster Parish Industrial District Site Color Aerial Photo Map


**2013 Aerial Imagery
NWPID Site
Webster Parish, LA**

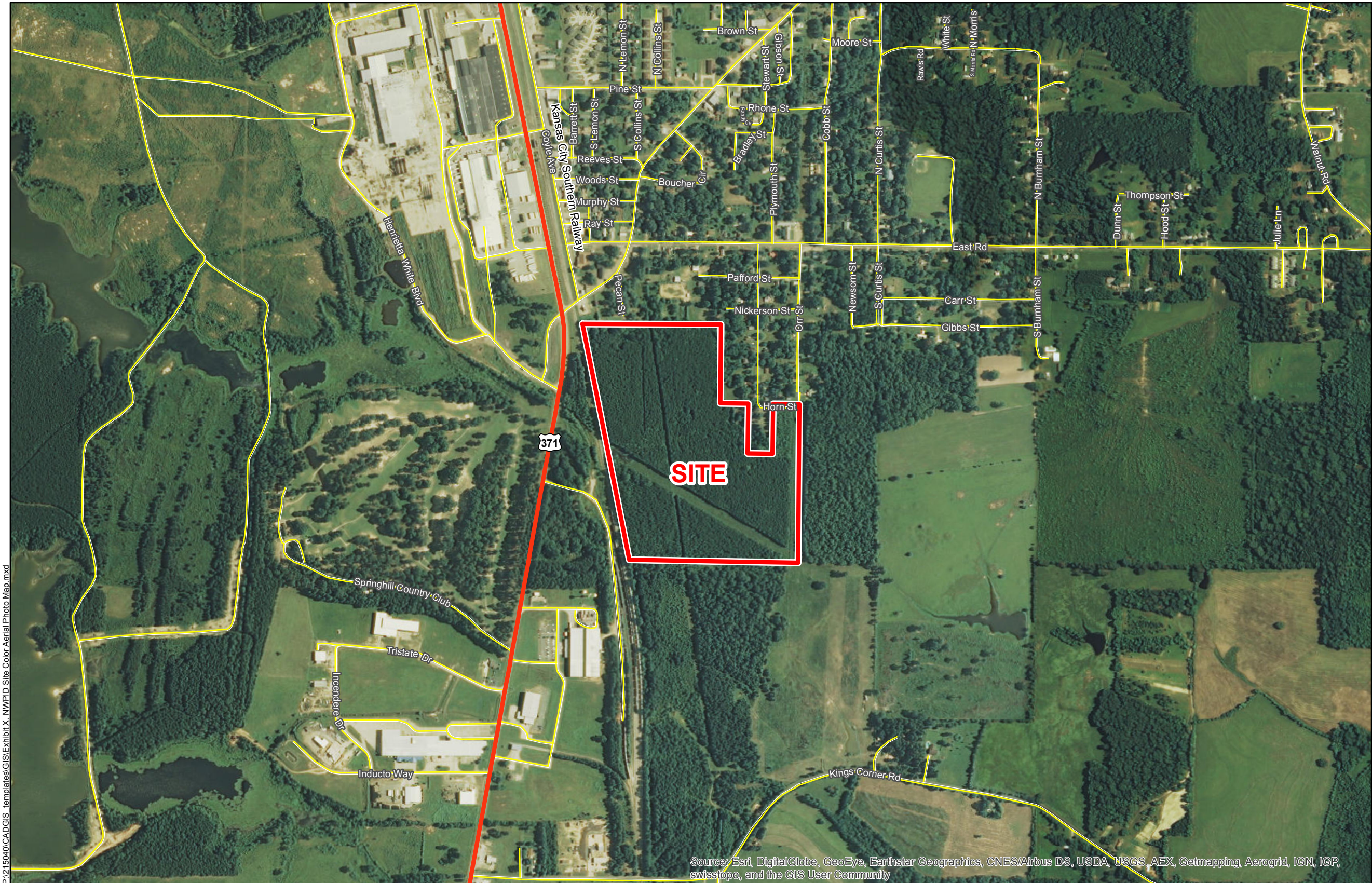
NWPID



Webster Parish

Legend

 Site Boundary
(61.33 Acres +/-)



D:\215040\CADGIS templates\GIS\Exhibit X. NWPID Site Color Aerial Photo Map.mxd

General Notes:

- General Notes:
1. No attempt has been made by CSRS, Inc. to verify site boundary, title, actual legal ownership, deed restrictions, servitudes, easements, or other burdens on the property, other than that furnished by the client or his representative.
 2. Transportation data from 2013 TIGER datasets via U.S. Census Bureau at <ftp://ftp2.census.gov/geo/tiger/TIGER2013>.
 3. Aerial imagery from 2015 Esri World Imagery and may not reflect current ground conditions.

Source: Esri, DigitalGlobe, GeoEye, Earthstar Geographics, CNES/Airbus DS, USDA, USGS, AEX, Getmapping, Aerogrid, IGN, IGP, swisstopo, and the GIS User Community



**NORTH WEBSTER PARISH
INDUSTRIAL DISTRICT**

Date: 9/25/2015

Project Number: 215040

Drawn By: AMB

Checked By: JAY



6767 Perkins Road Suite 200 Baton Rouge, LA 70808
Telephone: 225 769-0546 Fax: 225 767-0060
www.csrsonline.com



Scale 1:10,000

0 540 1,080 Feet