

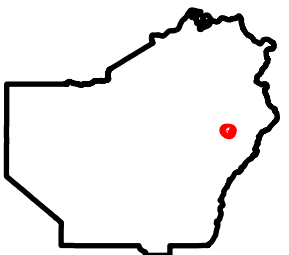
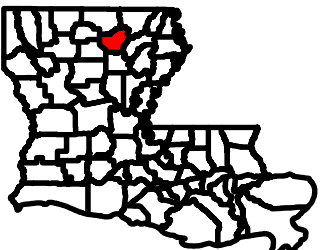
Exhibit CC. Guide Site All Utilities Infrastructure Map



Guide Site All Utilities Infrastructure Map

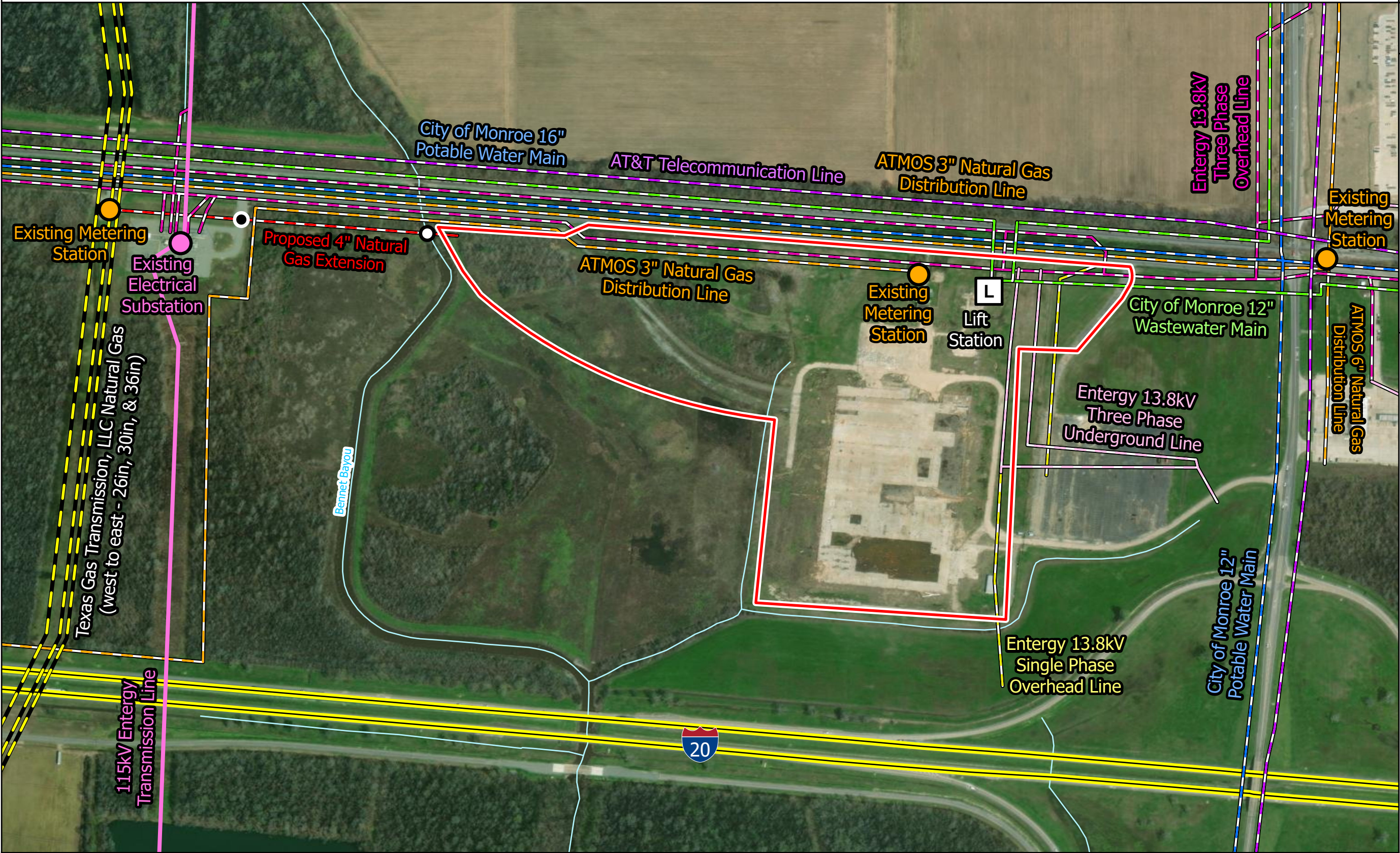
Site Exhibit for
Guide Site
Ouachita Parish, LA

NLEP



Legend

- Site Boundary (±49.49 ac.)
- Stream
- AT&T Telecommunication Line
- City of Monroe 12" Wastewater Main
- City of Monroe Potable Water Main
- ATMOS Natural Gas Distribution Line
- Proposed 4" Natural Gas Extension Line
- Proposed Horizontal Directional Drilling
- Proposed Open Trench Crossing
- Entergy 13.8kV Single Phase Overhead Line
- Entergy 13.8kV Three Phase Overhead Line
- Entergy 13.8kV Three Phase Underground Line
- 115kV Entergy Transmission Line
- Electrical Substation
- National Pipeline Mapping System
 - NATURAL GAS
- Major Road
 - Interstate
 - US Highway



General Notes:
1. The information presented herein is for planning purposes only. Further detailed due diligence MUST be completed prior to making decisions regarding the site.
2. No attempt has been made by CSRS, Inc. to verify site boundary, title, actual legal ownership, deed restrictions, servitudes, easements, or other burdens on the property, other than that furnished by the client or his representative.
3. Transportation data from 2023 TIGER datasets via U.S. Census Bureau at <https://www.census.gov/geographies/mapping-files/time-series/geo/tiger-line-file.html>.
4. Aerial imagery is compiled from multiple different sources to create one cohesive image and may not reflect current ground condition.
5. Utility information from visual inspection and/or the individual utility operators. Exact field location has not been determined by survey. The lines shown are an approximate representation only and may have been offset for depiction purposes.

CSRS

0 270 540
Feet

Date: 5/3/2024
Project Number: 216269
Drawn By: BMS
Checked By: EEB