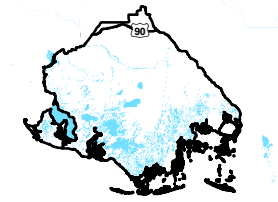
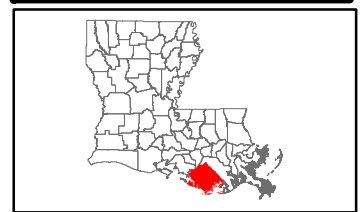


Exhibit N. Rebecca Development Park South Electrical Distribution Infrastructure Map

Rebecca Development Park South Electrical Distribution Infrastructure Map

Rebecca Development
Park South
Terrebonne Parish, LA

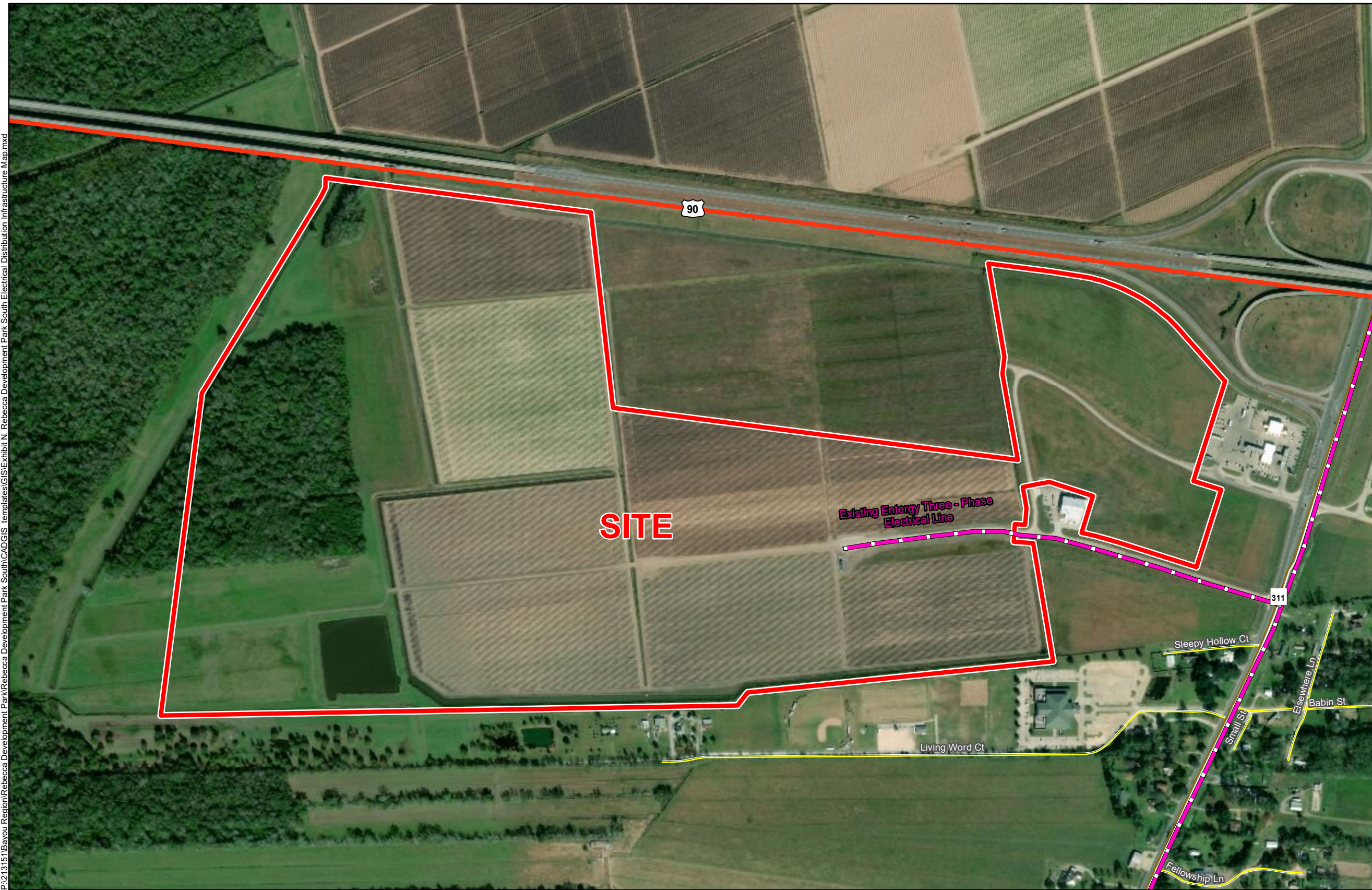
SLEC



Terrebonne Parish

LEGEND

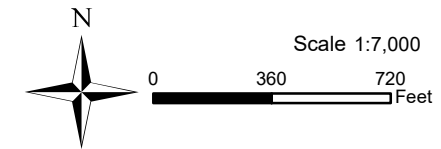
- Site Boundary
- Entergy Three Phase Electrical Line
- Existing Roadway
- US Highway
- Rural State Highway
- Local Roads



P:\213151\Bayou Region\Rebecca Development Park\Rebecca Development Park South\CAD\GIS templates\GIS\Exhibit N. Rebecca Development Park South Electrical Distribution Infrastructure Map.mxd

Date:	6/25/2019
Project Number:	213151
Drawn By:	DWC
Checked By:	EEB

- General Notes:
1. No attempt has been made by CSRS, Inc. to verify site boundary, title, actual legal ownership, deed restrictions, servitudes, easements, or other burdens on the property, other than that furnished by the client or his representative.
 2. Transportation data from 2013 TIGER datasets via U.S. Census Bureau at <ftp://ftp2.census.gov/geo/tiger/TIGER2013>.
 3. Utility information from visual inspection and/or the individual utility operators. Exact field location has not been determined by survey. The lines shown are an approximate representation only and may have been offset for depiction purposes.
 4. 2015 aerial imagery from USDA-APFO National Agricultural Inventory Project (NAIP) and may not reflect current ground conditions.

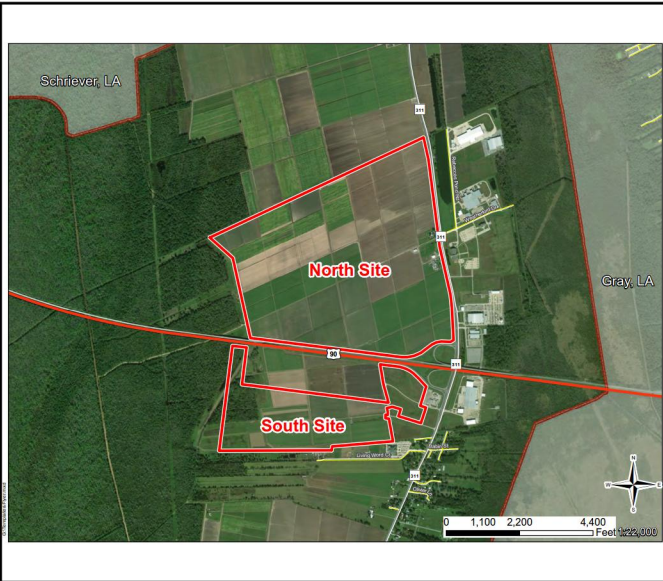


CSRS
IMAGINE SHAPE DELIVER

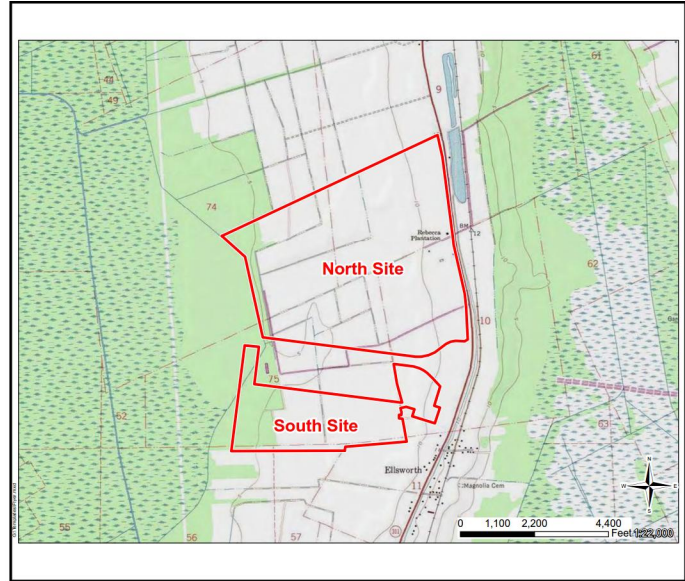
6767 Perkins Road Suite 200 Baton Rouge, LA 70808
Telephone: 225 769-0546 Fax: 225 767-0060
www.csrsonline.com

Electric Utility Provider Questionnaire (page 1 of 2)

Site Name: Rebecca Plantation
 CSRS Project ID: 213151



Site Map 1



Site Map 2

Date (mm/dd/yyyy): 03/14/2019

Provider Name: Entergy Louisiana

Address: 2121 E. Tunnel Boulevard

City: Houma

State: Louisiana

Zip Code: 70361

Name: Juan Barahona

Phone: (985) 850-1245

Email: jbaraho@entergy.com

Title: Distribution Field Engineer

Is electric distribution currently available at this site?

Yes No

Is 3-Phase service currently available to this site?

Yes No

Is dual feed currently available?

Yes No

What is the size of the nearest distribution line and distance (feet) to the site?

Size (kV) 13.8 Distance 50 ft

If 3-phase is not available at the site, what is the size (kV) of and distance (feet) to the nearest three-phase line?

Size (kV) n/a Distance n/a

What is the size of and distance (miles) to the nearest transmission line with a 69kV or greater?

Size (kV) 115 Distance 2300 ft

What is the distance (miles) to the nearest substation to serve the site?

Distance 1 mile Name Shriever

What is the distance (miles) to the next closest substation to serve the site?

Distance 4 miles Name Terrebonne

What is the current Peak Load capacity available to this site (MW)? If no load information is available, please provide minimum MW currently available to the site.

Peak (MW) 16

Electric Utility Provider Questionnaire (page 2 of 2)

Is a plan underway to improve services at or near this site within the next year? If so, please provide anticipated upgrades, location, and time for implementation.

Please provide a map of existing electric utility assets near site. (click in area to insert image)



[Submit Form](#)