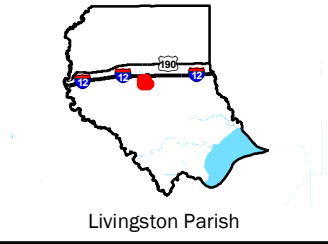
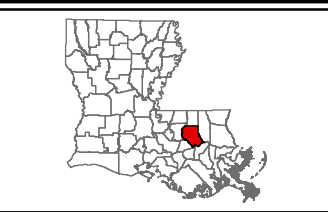


Exhibit H. Colyell Business Park Zoning Map

Colyell Business Park Zoning Map

Colyell Business Park
Livingston Parish, LA

BRAC

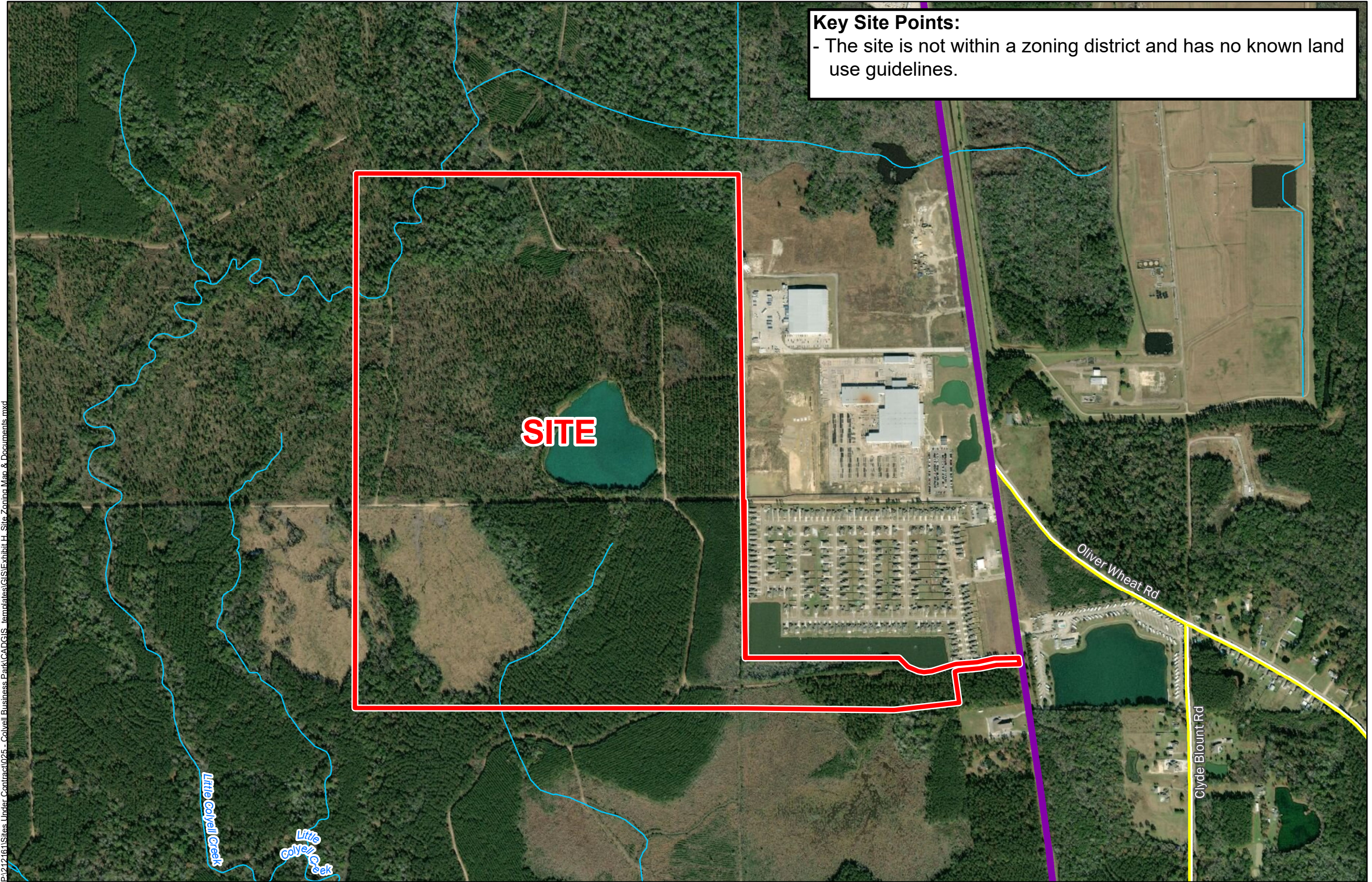


Livingston Parish

LEGEND

- Site Boundary
- Existing Roadway**
- Urban State Highway
- Local Roads
- Stream

Key Site Points:
- The site is not within a zoning district and has no known land use guidelines.



P:\212161\Sites Under Contract\025 - Colyell Business Park\CAD\GIS Templates\GIS\Exhibit H_Site Zoning Map & Documents.mxd



Date:	11/15/2019
Project Number:	212161
Drawn By:	EEB
Checked By:	TMG

- General Notes:
- No attempt has been made by CSRS, Inc. to verify site boundary, title, actual legal ownership, deed restrictions, servitudes, easements, or other burdens on the property, other than that furnished by the client or his representative.
 - Transportation data from 2013 TIGER datasets via U.S. Census Bureau at <ftp://ftp2.census.gov/geo/tiger/TIGER2013>.
 - Utility information from visual inspection and/or the individual utility operators. Exact field location has not been determined by survey. The lines shown are an approximate representation only and may have been offset for depiction purposes.
 - 2015 aerial imagery from USDA-APFO National Agricultural Inventory Project (NAIP) and may not reflect current ground conditions.

