

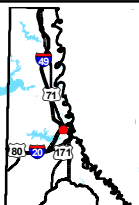
Exhibit BB. Hunter Industrial Park All Utilities Infrastructure Site Map



Hunter Industrial Park All Utilities Infrastructure Site Map

Hunter Industrial Park
Caddo Parish, LA

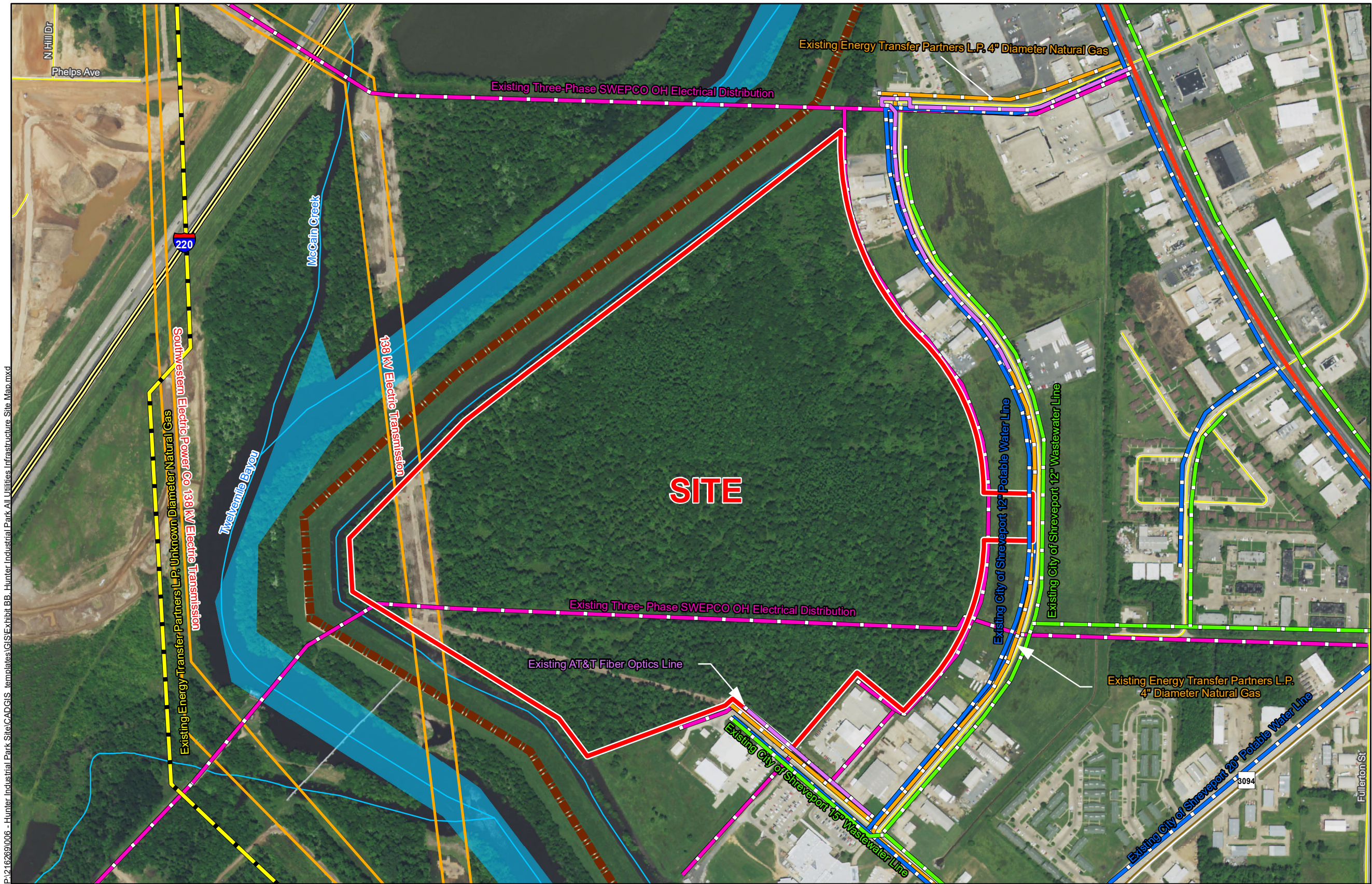
NLEP



Caddo Parish

LEGEND

- Site Boundary
- Existing Energy Transfer Partners L.P. 4" Diameter Natural Gas
- Existing Energy Transfer Partners L.P. Unknown Diameter Natural Gas
- Existing City of Shreveport Wastewater Line
- Existing AT&T Telecommunications Line
- Existing Three-Phase SWEPCO Electrical Distribution
- Existing City of Shreveport Potable Water Line
- Substation
- Electric Transmission**
 - 138 kV
- Levee**
- Major Roads**
 - Interstate
 - US Highway
 - Rural State Highway
 - Local Roads
 - Stream



General Notes:

1. No attempt has been made by CSRS, Inc. to verify site boundary, title, actual legal ownership, deed restrictions, servitudes, easements, or other burdens on the property, other than that furnished by the client or his representative.
2. Transportation data from 2013 TIGER datasets via U.S. Census Bureau at <ftp://ftp2.census.gov/geo/tiger/TIGER2013>.
3. Utility information from visual inspection and/or the individual utility operators. Exact field location has not been determined by survey. The lines shown are an approximate representation only and may have been offset for depiction purposes.
4. 2015 aerial imagery from USDA-APFO National Agricultural Inventory Project (NAIP) and may not reflect current ground conditions.
5. Proposed potable water upgrade shown is for representational purposes only, depicting the intent of the cost estimate provided with this exhibit to meet LED minimum requirements, and is subject to revision.



0 250 500 Feet

Scale 1:6,000



Date:	5/15/2018
Project Number:	216269
Drawn By:	EEB
Checked By:	TMK



6767 Perkins Road Suite 200 Baton Rouge, LA 70808
Telephone: 225 769-0546 Fax: 225 767-0060
www.csrsonline.com