

Exhibit G. Port of Columbia Site Wetlands & Cultural Encumbrances

Encumbered Area Map
Port of Columbia Site
Caldwell Parish, LA

Columbia Port Commission



Caldwell Parish

LEGEND

- Site Boundary (171.37 Ac. +/-)
- Wetland Type**
- Forested Wetlands
- Other Waters of the U.S.
- Pond
- Existing Roadway**
- US Highway
- Local Roads
- Railroad
- Stream
- Waterbody

Site Details

Appx. Site Size: 171.37 Ac. ±
Wetlands: 1.85 Ac. ±



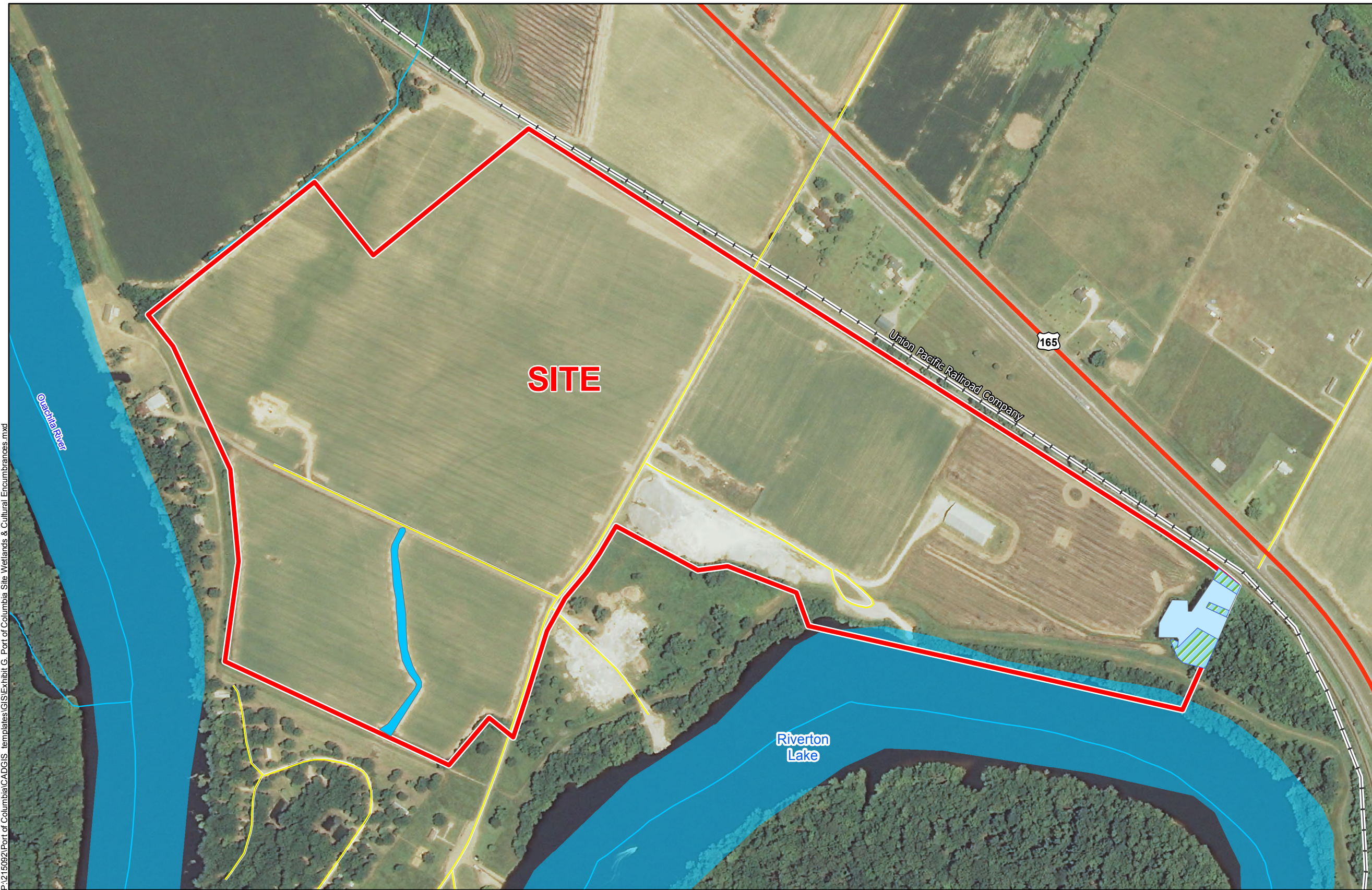
ECONOMIC ALLIANCE

NELEA

Date:	7/20/2015
Project Number:	215092
Drawn By:	AMB
Checked By:	JAY



6767 Perkins Road Suite 200 Baton Rouge, LA 70808
Telephone: 225 769-0546 Fax: 225 767-0060
www.csrsonline.com



P:\215092\Port of Columbia\CAD\GIS templates\GIS\Exhibit G. Port of Columbia Site Wetlands & Cultural Encumbrances.mxd

- General Notes:
1. No attempt has been made by CSRS, Inc. to verify site boundary, title, actual legal ownership, deed restrictions, servitudes, easements, or other burdens on the property, other than that furnished by the client or his representative.
 2. Transportation data from 2013 TIGER datasets via U.S. Census Bureau at [ftp://ftp2.census.gov/geo/tiger/TIGER2013](http://ftp2.census.gov/geo/tiger/TIGER2013).
 3. 2013 aerial imagery from USDA-APFO National Agricultural Inventory Project (NAIP) and may not reflect current ground conditions.
 4. Wetlands shown hereon are from Jurisdictional Determination dated June 5, 2015 by the U.S. Army Corps of Engineers.

