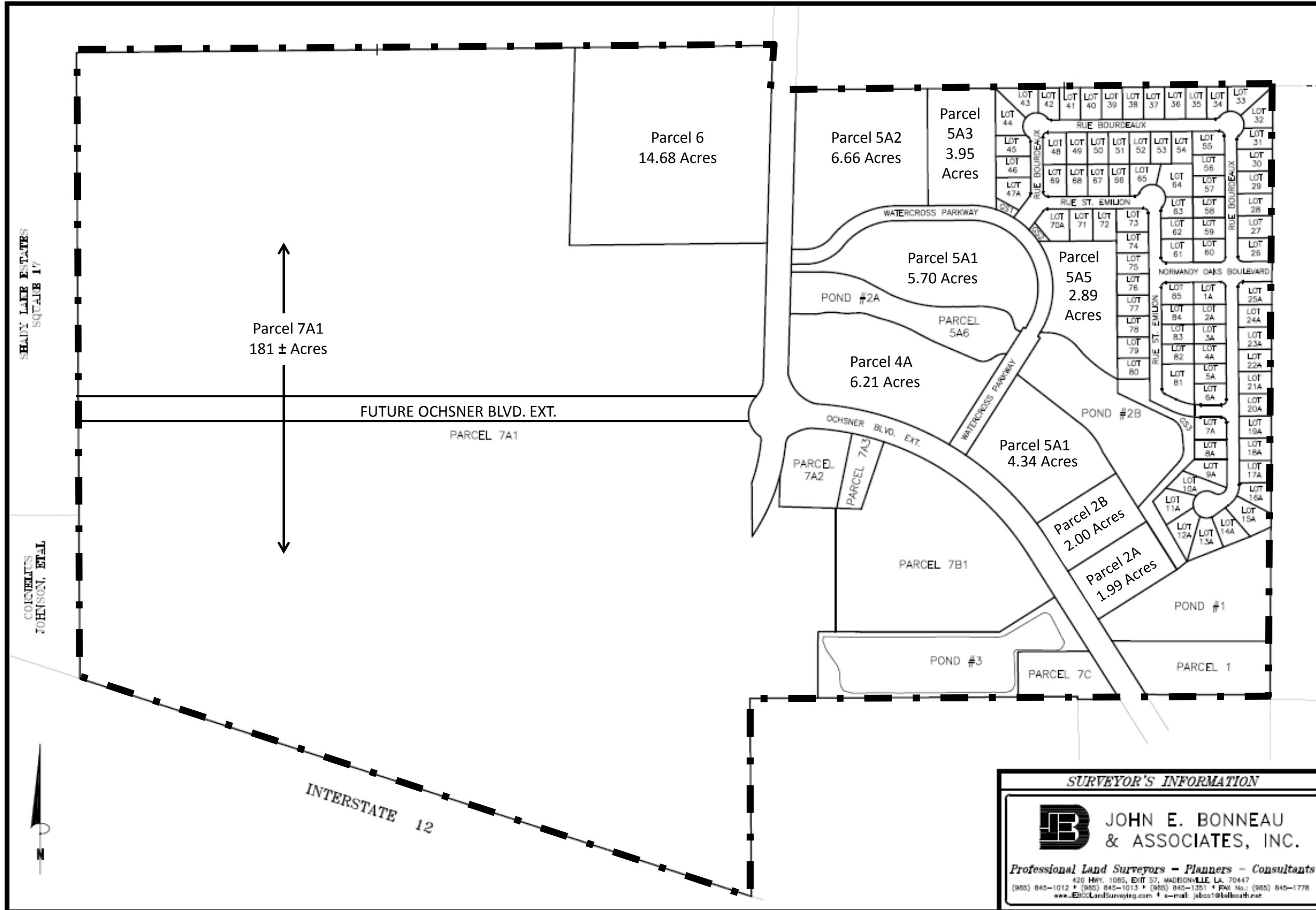


EXHIBIT 11 - Boundary Map



DRAWN BY	SPH
DATE	07/11/13
REVISION	DATE
CHECKED	JEB
SCALE	1" = 350'
SURVEY #	2006948 EXHIBIT

Survey for: All State Financial Company

Property: AN OVERALL MAP OF VARIOUS PARCELS OF LAND SITUATED IN SECTION 12, TOWNSHIP 7 SOUTH, RANGE 10 EAST, ST. TAMMANY PARISH, LOUISIANA.

SHEET NUMBER
1 OF 1

SURVEYOR'S INFORMATION

JOHN E. BONNEAU & ASSOCIATES, INC.

Professional Land Surveyors - Planners - Consultants

420 HWY. 1085, EXIT 57, MADISONVILLE, LA. 70447
 (985) 845-1012 • (985) 845-1013 • (985) 845-1351 • FAX No.: (985) 845-1778
 www.AllStateSurveying.com • e-mail: jebco1@allstate.net

SHADY LAKE ESTATES SQUARE 17

COCHNELUS JOHNSON, ET AL

Nord du Lac